

Tous droits strictement réservés. Reproduction ou communication à des tiers sans autorisation écrite du propriétaire. Property of FCI. Droits de reproduction FCI.

**REFERENCE SPECIFICATIONS**

- DIN 41652
- MIL-DTL-24308

**PHYSICAL CHARACTERISTICS**

- INSULATOR MATERIAL :
- PBT COLOR BLACK-RAL 7001/STANDARD MATERIAL
- CONTACT MATERIAL: - PHOSPHOR BRONZE FOR STRAIGHT CONTACT AND RA SOCKET  
- BRASS FOR RA PIN
- GROUNDING DEVICE MATERIAL : - BRASS FOR RIGHT ANGLE CONTACT

**ELECTRICAL CHARACTERISTICS**

- MAXIMUM RATING CURRENT: 5A AT 70°C
- NOMINAL CURRENT: 5A (STANDARD CONDITIONS)
- CONTACT RESISTANCE : straight terminations: <10mW  
Right angled termination: <25mΩ  
: <35mΩ for 50 way
- VOLTAGE PROOF : >1000 V.r.m.s.
- RATED VOLTAGE : 300 V.r.m.s.
- insulation resistance: >5000mΩ
- creepage and clearance distance: >1mm
- average wiping length: 2mm

**MECHANICAL CHARACTERISTICS**

- RETENTION AGAINST TORQUE: - Threaded insert: 0.7 N.m minimum  
- Female screw lock: 0.5 N.m minimum
- INSERTION AND WITH DRAWAL FORCE: <n x 3.40 N (n number of cts)
- GAUGE RETENTION FORCE : >0.20 N (gauge PM)
- THICKNESS GAUGE = Ø0.99±0.005 / SURFACE ROUGHNESS:  
Ra=0.10µ mini- 0.25µ maxi
- CONTACT RETENTION IN INSULATOR : mini 16N for straight contact  
mini 20N for right angled contact
- VIBRATIONS: 10-2000Hz / 1.5 mm - 20g / 3 x 2 HRS
- INTERRUPTION <1µs (NOT APPLICABLE FOR PL3)
- SHOCK: ACC. HALF SINE 50g- 11m.s-6x3 SHOCKS
- INTERRUPTION <1µs
- HARPOON INSERTION FORCE: <60N

**PERFORMANCE LEVELS**

MECHANICAL ENDURANCE ONLY		
P/N: DXXXXCXXXXXX		PERFORMANCE LEVELS
4	200 OPERATIONS	PL3
6	400 OPERATIONS	PL1

MECHANICAL ENDURANCE AND INDUSTRIAL ATMOSPHERE TEST(1)		
P/N: DXXXXCXXXXXX		PERFORMANCE LEVELS
4	salt spray: 24 hours	PL3
6	250 op + test (1 or 2)-10 days + 250 op	PL1

1) INDUSTRIAL ATMOSPHERE TEST: 3 GASES available for contacts and grounding device

IN ACCORDANCE WITH IEC-68-2-60-TTD - TEST ke - MTH C OR IEC 512-6 TEST 11g

MIXED GASES: H2S=10 PPB±5.10-9vol/vol +N2O=200±50.10-9 vol/vol + CL2=10±5.10-9vol/vol

TEMPERATURE = 30±1°C / RELATIVE HUMIDITY= 70±3°C

(2) INDUSTRIAL ATMOSPHERE TEST: 4 GASES available for contacts active area only

BELCORE TEST : MIXED GASES: H2S=10 PPB±5 vol/vol +N2O=200ppb±50 vol/vol + CL2

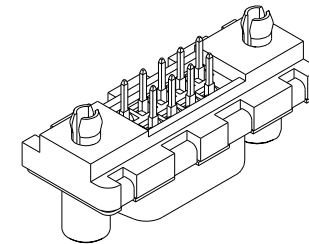
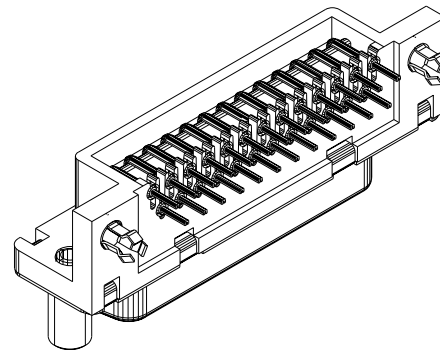
=10ppb±3vol/vol + S2O=100ppb±30vol/vol  
TEMPERATURE = 30±1°C / RELATIVE HUMIDITY= 70±2°C

**ENVIRONMENTAL CHARACTERISTICS**

- CLIMATIC CATEGORY: 55/125/56
- TEMPERATURE RANGE -55°C TO +125°C
- DAMP HEAT STEADY STATE 56 DAYS

RIGHT ANGLED

STRAIGHT



**PLATING TIN LEAD VERSION**

- CONTACT:
  - GOLD OVER NICKEL ON MATING SURFACES
  - TIN LEAD OVER NICKEL ON TERMINATION PARTS
- SHELL AND ACCESSORIES TIN LEAD OVER COPPER

**PLATING TIN VERSION**

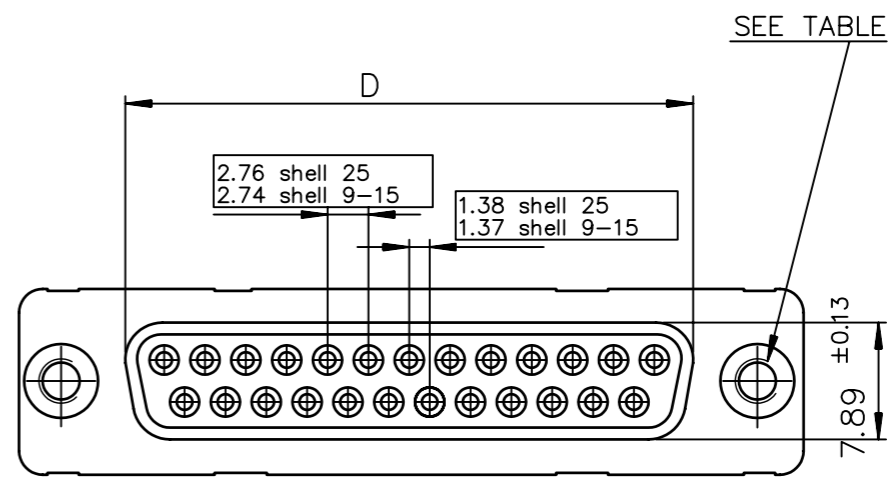
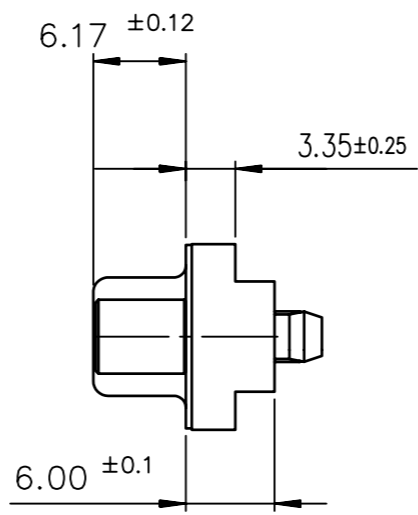
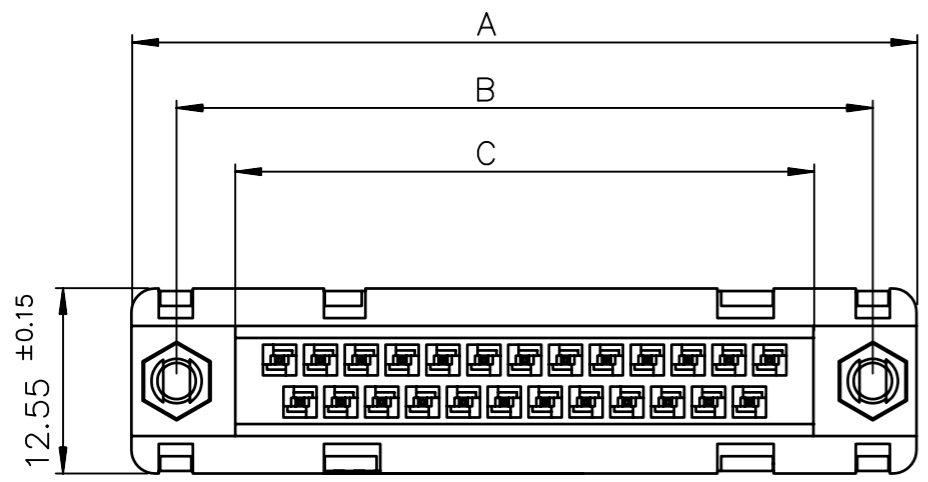
**NOTE RoHS INFORMATIONS**

- The "LF" products meet European union Directives and other country regulations as described in GS-22-008
- The housing will withstand exposure to 260°C peak temperature for 3.5 seconds in a wave solder application with a 1.6 mm minimum thickcircuit board. See application notes/procedures if they are available.
- Termination plating spec: 1.27µm Nickel mini, 2.5 to 7.5 µm Sn (pure matte)
- Shell plating: 2 to 4 µm Cu + 3 to 10 µ Sn (pure bright)
- Accessories: Sn pure bright
- Packaging spec: see GS-14-920

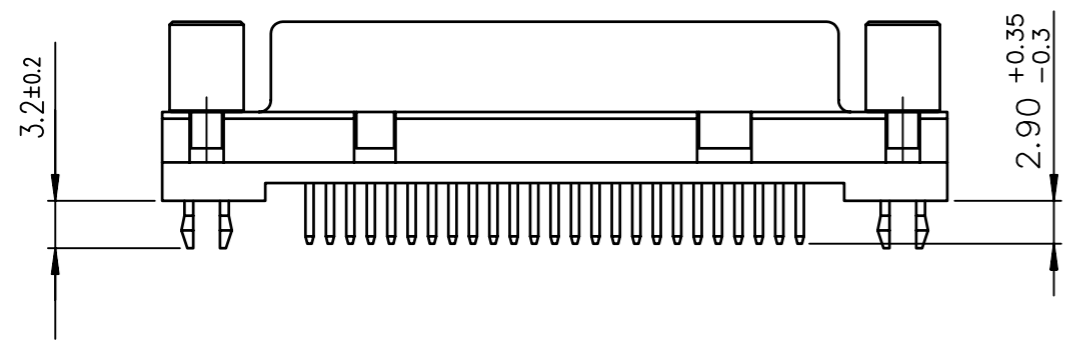
	www.fciconnect.com		surface <input checked="" type="checkbox"/>	tolerance	projection		
	Dr JOUBERT	30/11/00	Product family	-	size A3		Scale 1:1
Eng			Spec ref		ECN	LS05-0039	
Chr			Material	SEE NOTES			
Appr	LEGARE	30/11/00					
title	DELTA D SOLDER CTS CONNECTORS					dwg no	C01-8646-0000
tt	GENERAL CHARACTERISTICS						Rev. C
catalog no					CUSTOMER COPY	sheet 1 of 1	

All rights strictly reserved. Reproduction or issue to third parties in any form without written authority from the proprietor. Property of FCI. Copyright FCI.

A



B



SHELL	A ± 0.38	B ± 0.12	C ± 0.10	D ± 0.25	E ± 0.07
09	30.81	24.99	16.96	16.21	10.96
15	39.14	33.32	25.18	24.54	19.18
25	53.03	47.04	39.12	38.25	33.12
37	69.32	63.50	55.68	54.71	49.68

SHELL	LEAD FREE PART NUMBER	TIN LEAD PART NUMBER	DESIGNATIONS
09	D09S24A6GV00LF	D09S24A6GV00	RECEPTACLE 9 CTS STRAIGHT-SOLDER TO BOARD-PCB HARPOON-SCREWLOCK -ELEC.CONTIN.
15	D15S24A6GV00LF	D15S24A6GV00	RECEPTACLE 15 CTS STRAIGHT-SOLDER TO BOARD-PCB HARPOON-SCREWLOCK -ELEC.CONTIN.
25	D25S24A6GV00LF	D25S24A6GV00	RECEPTACLE 25 CTS STRAIGHT-SOLDER TO BOARD-PCB HARPOON-SCREWLOCK -ELEC CONTIN.
37	D37S24A*GV00LF	D37S24A*GV00	RECEPTACLE 37 CTS STRAIGHT-SOLDER TO BOARD-PCB HARPOON-SCREWLOCK -ELEC.CONTIN.

V = SCREWLOCK Threaded UNC 4.40 sellers

4 = Performance level PL3 ≥ 200 OPERATIONS

6 = Performance level PL1 ≥ 500 OPERATIONS

C

PC card drilling dimensions(after plating)  
(thickness 1.60±0.20mm)

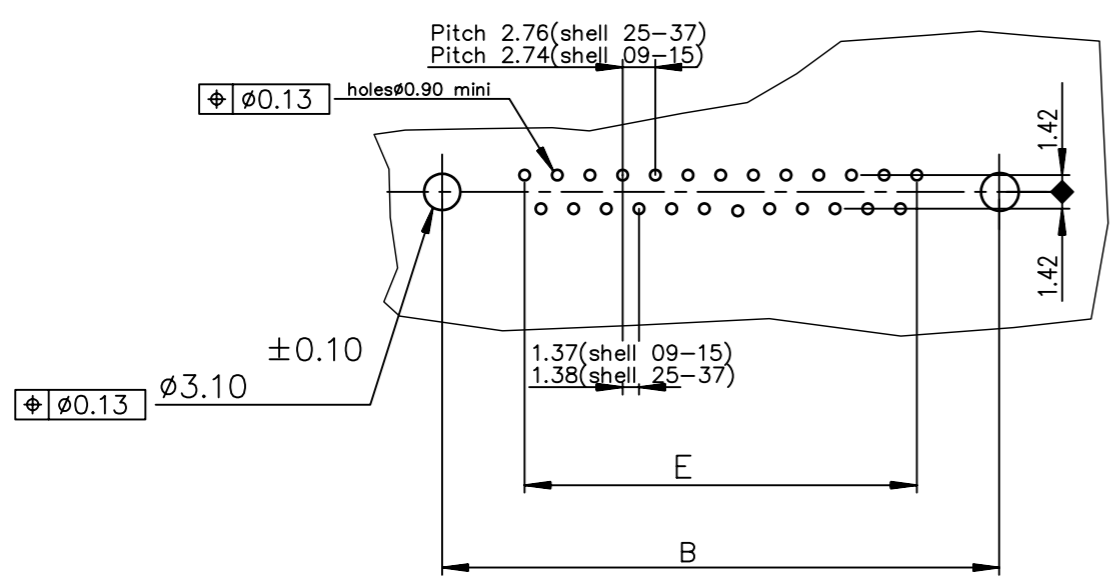
SHELL	LEAD FREE PART NUMBER	TIN LEAD PART NUMBER	DESIGNATIONS
09	D09S24A*GI00LF	D09S24A*GI00	RECEPTACLE 9 CTS STRAIGHT-SOLDER TO BOARD-PCB HARPOON-SCREWLOCK -ELEC.CONTIN.
15	D15S24A*GI00LF	D15S24A*GI00	RECEPTACLE 15 CTS STRAIGHT-SOLDER TO BOARD-PCB HARPOON-SCREWLOCK -ELEC.CONTIN.
25	D25S24A*GI00LF	D25S24A*GI00	RECEPTACLE 25 CTS STRAIGHT-SOLDER TO BOARD-PCB HARPOON-SCREWLOCK -ELEC CONTIN.
37	D37S24A*GI00LF	D37S24A*GI00	RECEPTACLE 37 CTS STRAIGHT-SOLDER TO BOARD-PCB HARPOON-SCREWLOCK -ELEC.CONTIN.

I = SCREWLOCK Threaded M3

4 = Performance level PL3 ≥ 200 OPERATIONS

6 = Performance level PL1 ≥ 500 OPERATIONS

D



GENERAL CHARACTERISTICS AND ROHS INFORMATIONS:  
SEE DRAWING C01-8646-0000

European Views

www.fciconnect.com			surface ISO 1302 ✓	tolerance std ISO 406 ISO 1101	projection mm
TOLERANCES UNLESS OTHERWISE SPECIFIED					
Dr	JOUBERT	2000/12/21	ANGULAR	0.X ±0.1	size A3
Eng	PESSON	2000/12/21			
Chr	NIRMAL GEORGE	2010-02-23	0.XX ±2	0.XXX ±0.1	ECN 110-0059
Appr	SUDHIR VARMA	2010-02-23			
Product family			D-SUB Spec ref -		
rev	ecn no	dr	date	title RECEPTACLE STD EUROPE STRAIGHT SOLDER TYPE FOR PCB 1.60mm	
A	-	SJO	2000/12/21	dwg no C01-8646-0815	
B	LS05-001	MPE	2005/03/14	Rev. E	
C	LS05-0056	LGO	2005/07/07	CUSTOMER sheet 1 of 1	
D	LS06-0097	LGO	2006/07/28		
E	110-0059	NG	2010-02-23		
-	-	-	-		
-	-	-	-		



Copyright FCI.