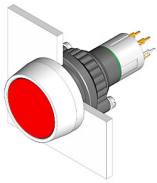


EAO – Your Expert Partner for Human Machine Interfaces

14-473.036 - Illuminated pushbutton actuator

14-473.036 - Illuminated pushbutton actuator



Attention: The preview is based on a sample product. This can differ from your current configuration.

Mounting

Mounting cut-out
Design Ø 22,3 mm
raised

Front

Front dimension
Front shape Ø 29 mm
round

Other Attributes

Weight 0,015 kg

Operating-/Indication part

Lens illumination illuminative

IP-Rating

Front protection IP67

Connection Method

Terminal Universal 2.0 x 0.5 mm

Actuator

Switching action Maintained
Housing colour black
Housing material Plastic

Switching element

Switching system Low-level element
Switching current 0.1 A
Contacts 1 NC + 1 NO
Switching voltage 42 V AC/DC
Contact material

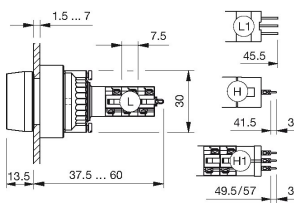
Function

Illuminated pushbutton

EAO – Your Expert Partner for Human Machine Interfaces

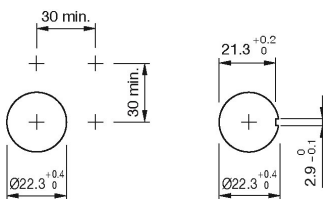
14-473.036 - Illuminated pushbutton actuator

Dimensions

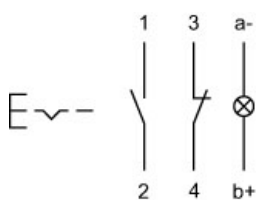


H = Universal terminal 2.0 x 0.5 mm

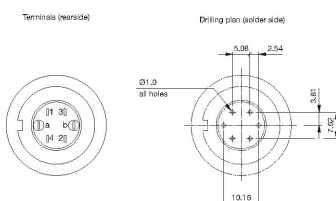
Mounting cut-outs



Wiring diagram



Component layout



Legend

Contacts: NC = Normally closed, NO = Normally open
Switching action: C = Maintained