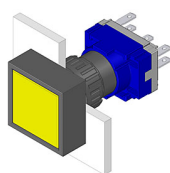


EAO – Your Expert Partner for Human Machine Interfaces

61-1150.0 - Illuminated pushbutton actuator

61-1150.0 - Illuminated pushbutton actuator



Attention: The preview is based on a sample product. This can differ from your current configuration.

Mounting

Mounting cut-out Ø 16 mm
Design raised

Front

Front dimension 24 mm x 24 mm
Front shape square
Front bezel colour black
Front bezel material Plastic

Other Attributes

Weight 0,005 kg

Operating-/Indication part

Lens illumination illuminative

IP-Rating

Front protection IP65

Actuator

Housing material Plastic
Housing colour black
Switching action Momentary

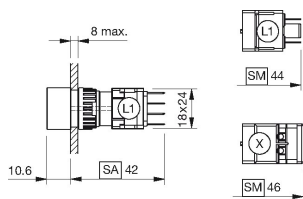
Function

Illuminated pushbutton

EAO – Your Expert Partner for Human Machine Interfaces

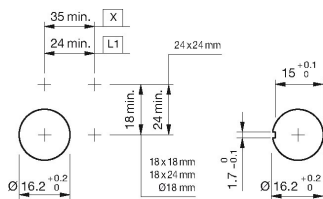
61-1150.0 - Illuminated pushbutton actuator

Dimensions



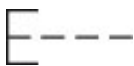
L1 = Solder/Plug-in terminal 2.8 x 0.5 mm

Mounting cut-outs



L1 = Solder/Plug-in terminal 2.8 x 0.5 mm

Wiring diagram



Legend

Switching action: B = Momentary