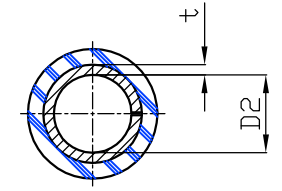
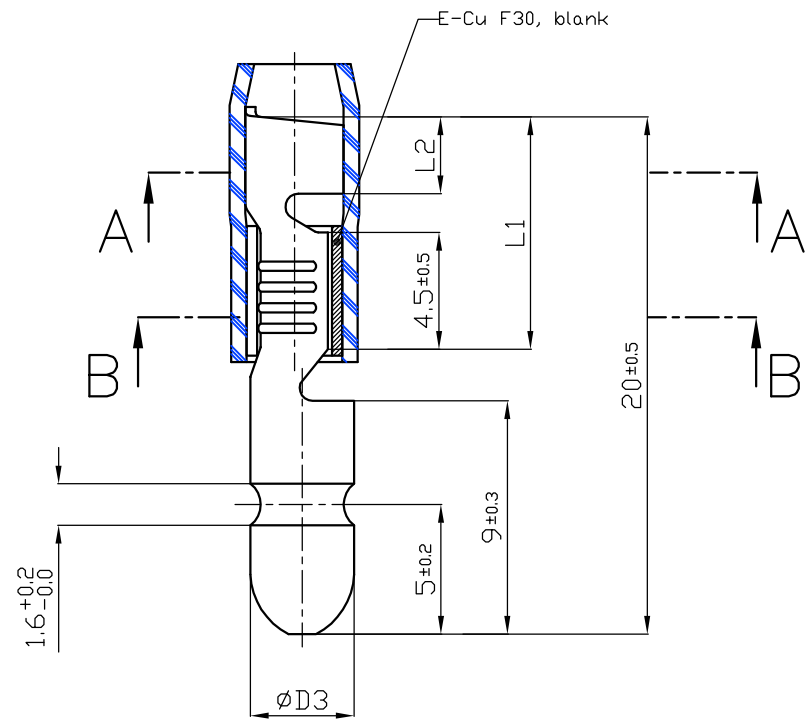
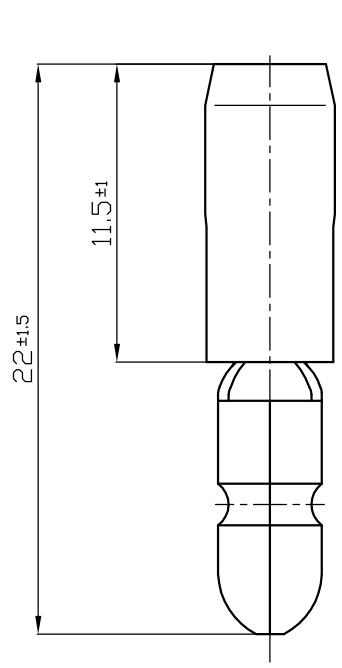
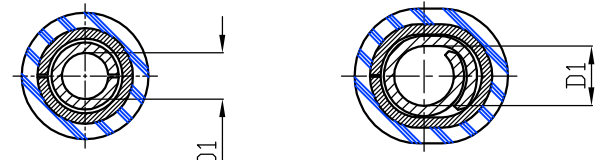


WIRE RANGE	PART No.	PIN CONNECTORS		PVC-INSUL. SLEEVE	DIMENSIONS					
		PIN	MATERIAL	COLOUR	D1	D2	D3	L1	L2	t
0,5-1	35038.000.000	4,0	CuZn30 F47 / frSn 2		±0,3	±0,3	-0,1	±0,5	±0,5	±0,03
1,5-2,5	35133.000.000	4,0	CuZn30 F47 / Sn 3	RED	2,3	3,8	4	2	8	0,4
1,5-2,5	35042.000.000	5,0	CuZn30 F47 / frSn 2	BLUE	2,3	3,8	5	3	9	0,4
2,5-6,0	35084.000.000	5,0	CuZn30 F47 / Sn 3	YELLOW	3,5	5,2	5	3	9	0,4



SECTION: A-A



FOR: 35133

SECTION: B-B

RoHS compliant



IF IN DOUBT ASK

CUSTOMER DRAWING

Drawn: JP	Date: 02.11.07	Material: SEE TABLE	Toler.: 0-1: ±0.05	3-6: ±0.15	Scale: 5:1	Wire Range: SEE TABLE
Authorised: MM	Date: 02.11.07	Finish: SEE TABLE	1-3: ±0.1	6-↑: ±0.2	Title: PIN CONNECTORS WITH INSULATION SLEEVE	
ALL DIMENSIONS IN MILLIMETERS This drawing and the designs therein are the industrial property of Utilux. They may not be copied, used or disclosed without written permission from Utilux.			1st Angle projection		Drawing No.: 35038 -03	

02.11.2007	JP	REDRAWN FROM: 35038, 35133, 35042, 35084	01
Date	By	Modifications	Iss

