

Product/Process Change Notice (PCN)



- Major change
 Minor change

PCN #: ConMPC3 2013-08

Product Affected: 6620xxx1122 / 6620xx235922 /

662xxx231822 / 6620xx1022 /

6620xx236022 / 6620xx230822 /

662xxx231722 / 6621xx145021

- Product Mark
 Date Code
 Packaging
 Others

Effective date: December 1st 2013

Contact: Benjamin BULOT

Title: Product Manager

Phone: +33 4 27 86 10 87

Fax: +33 4 27 86 10 79

E-mail: benjamin.bulot@we-online.com

Attachment:

- Yes No

Samples: No

DESCRIPTION AND PURPOSE OF CHANGE:

Plastic change from Nylon 9T to LCP, effective on all products with a date code of December 1st 2013 or after.

DETAIL OF CHANGE:

In order to maintain a continuous improvement process we decided to change the plastic used for our MPC3 connectors (PCB side) and to use LCP instead of PA9T.

LCP is known in the connector industry to be the best plastic material, with the best properties.

All electrical and mechanical properties remain the same.

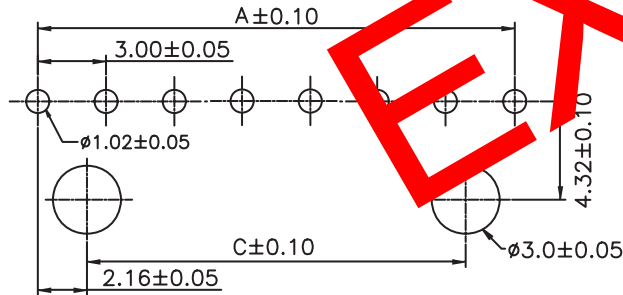
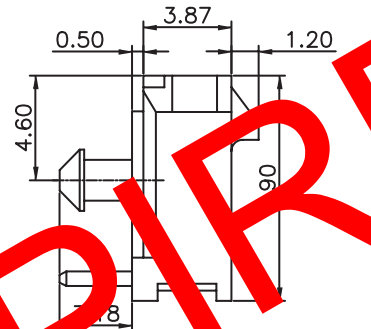
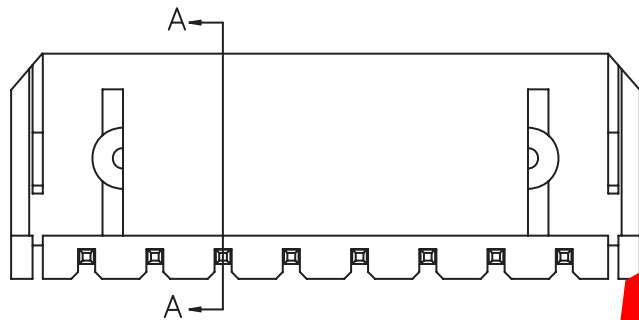
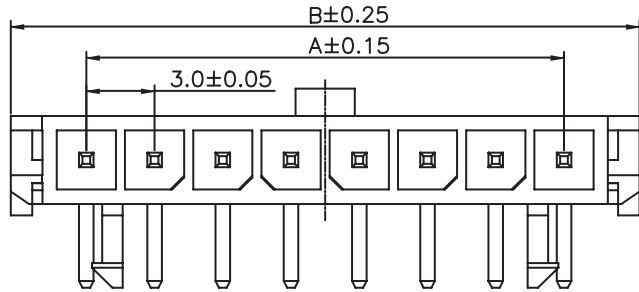
RELIABILITY / QUALIFICATION SUMMARY: N / A

DATA SHEET CHANGE:

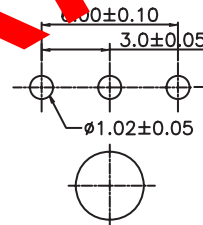
Yes

No

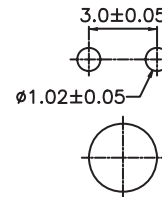
Würth Elektronik



4-12 CIRCUIT



3 CIRCUIT



2 CIRCUIT

PCB LAYOUT - COMPONENT VIEW

TECHNICAL CHARACTERISTICS

MATERIAL
 INSULATOR: NYLON 9T
 COLOR: BLACK
 CONTACT MATERIAL: COPPER ALLOY
 CONTACT TYPE: STAMPED
 CONTACT PLATING: TIN
 QUALITY CLASS: 25 MATING CYCLES
 REF. 100MM

ENVIRONMENTAL
 OPERATING TEMPERATURE: -25 UP TO 105°C
 FLAMMABILITY RATING: UL94-V0
 COMPLIANCE: LEAD FREE AND ROHS

ELECTRICAL
 CURRENT RATING: 5A
 WORKING VOLTAGE: 250V AC
 INSULATOR RESISTANCE: >1000 MOHM
 DIELECTRIC WITHSTANDING VOLTAGE: 1500V AC/MN
 CONTACT RESISTANCE: 10 mOHM MAX

STANDARD
 CERTIFIED: E323964 / MODEL NUMBER 662-1R

SOLDERING
 WAVE AND REFLOW PROCESS

PACKAGING
 TUBE

DIMENSION
 A = 3.00 x (NB. PIN - 1)
 B = 3.00 x (NB. PIN + 1) + 0.65
 C = 3.00 x (NB. PIN - 3) + 1.70

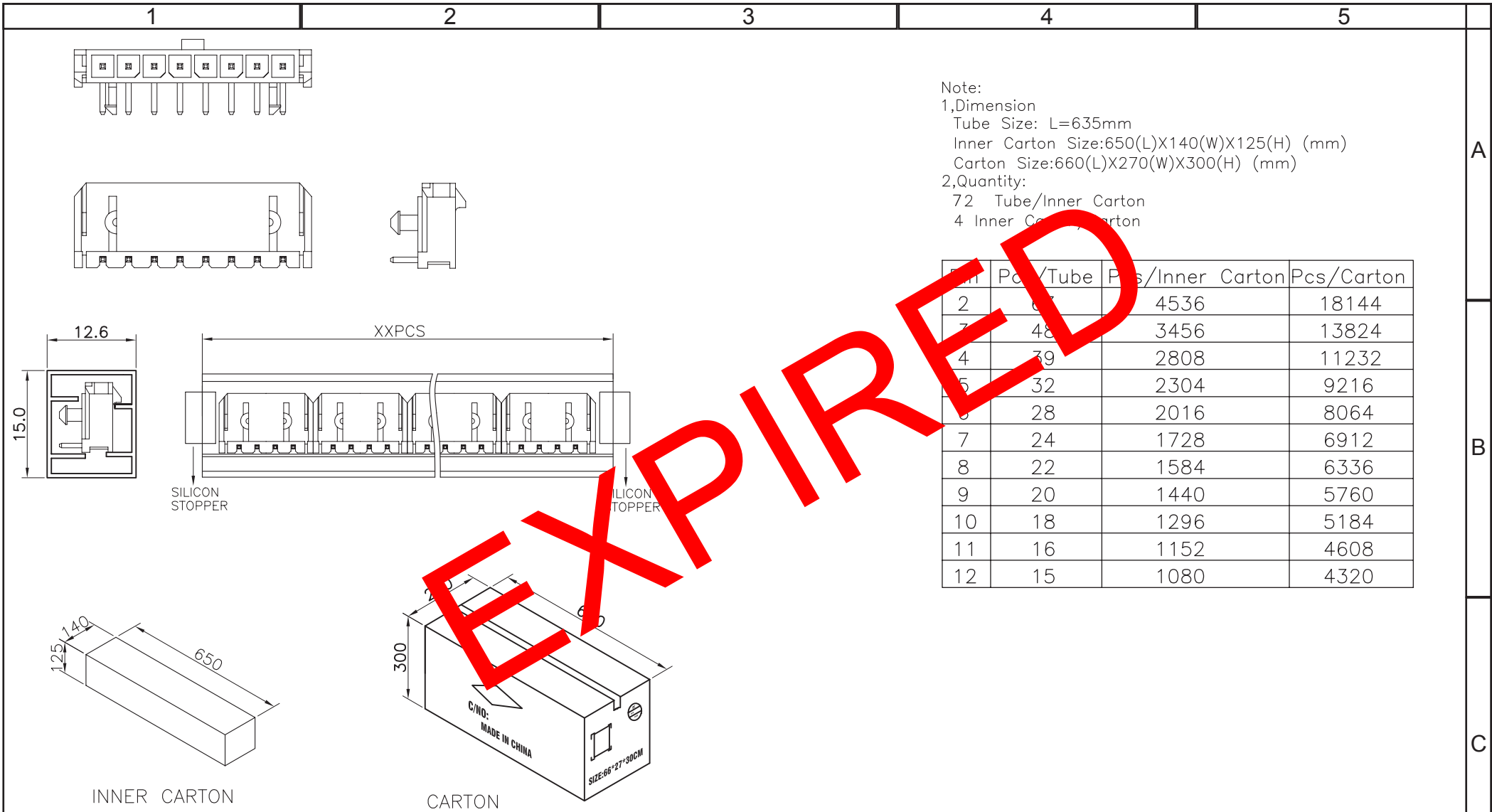
RoHS Compliant			
G			
F	06-JUL-12	PLASTIC	GG
E	18-NOV-09	STANDARD	JP
D	23-AVR-09	PACKAGING	JC
C	31-DEC-07	SOLDERING	CH
B	01-MAR-07	PDF	EC
A	05-SEP-06	ROHS	SEA
REV	DATE	FILE	BY

PROJECTION:	GENERAL TOLERANCE
	.X = +/- 0.2
APPROVAL: RJ	.XX = +/- 0.15
	UNIT: MM
	SCALE:
	SHEET: 1/2
	DRAW: PEARL

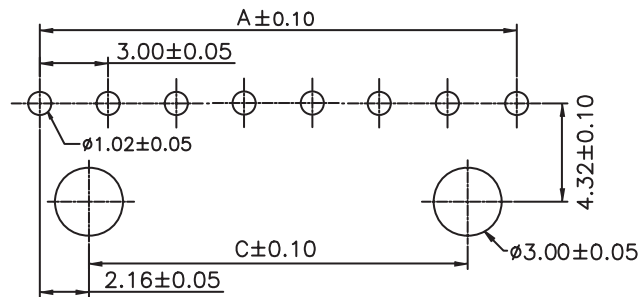
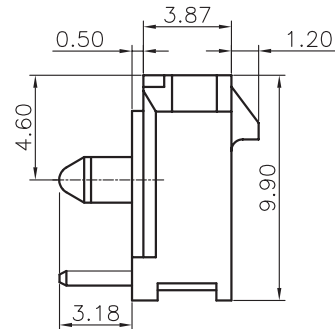
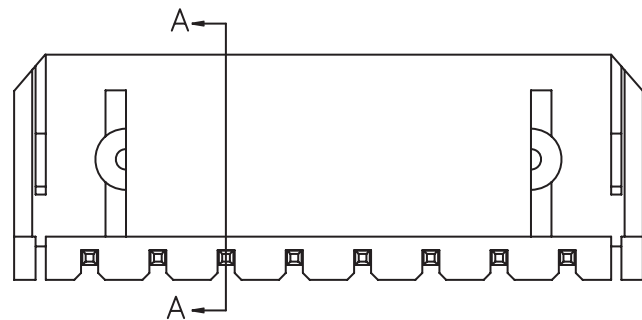
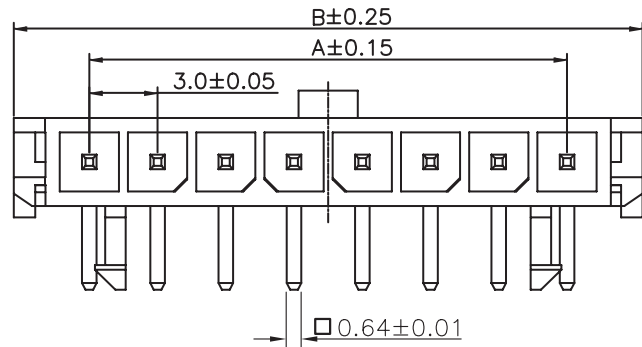


DESCRIPTION: 3.00MM MALE SINGLE ROW RIGHT ANGLE HEADER WITH PLASTIC PEGS
 WERI PART NO: 662 0xx 110 22

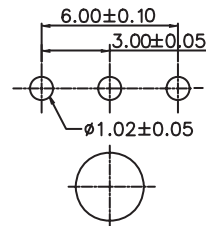
SIZE
A4



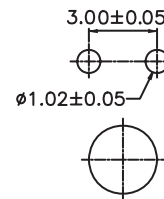
RoHS Compliant				PROJECTION:	GENERAL TOLERANCE		DESCRIPTION: 3.00MM MALE SINGLE ROW RIGHT ANGLE HEADER WITH PLASTIC PEGS WERI PART NO: 6620 xx 11022_TPK	SIZE A4
G					.X = +/- 0.2			
F					.XX = +/- 0.15			
E				APPROVAL: RJ				
D								
C								
B								
A								
REV	DATE	FILE	BY					



4-12 CIRCUIT



3 CIRCUIT



2 CIRCUIT

TECHNICAL CHARACTERISTICS

MATERIAL
 INSULATOR: LCP
 COLOR: BLACK
 CONTACT MATERIAL: COPPER ALLOY
 CONTACT TYPE: STAMPED
 CONTACT PLATING: TIN
 QUALITY CLASS: 25 MATING CYCLES
 PITCH: 3.00MM

ENVIRONMENTAL
 OPERATING TEMPERATURE: -40 UP TO 105°C
 FLAMABILITY RATING: UL94-V0
 COMPLIANCE: LEAD FREE AND ROHS

ELECTRICAL
 CURRENT RATING: 5A
 WORKING VOLTAGE: 250V AC
 INSULATOR RESISTANCE: >1000 MOHM
 DIELECTRIC WITHSTANDING VOLTAGE: 1500V AC/MN
 CONTACT RESISTANCE: 10 mOHM MAX

STANDARD
 CERTIFIED: E323964 / MODEL NUMBER 662-1R

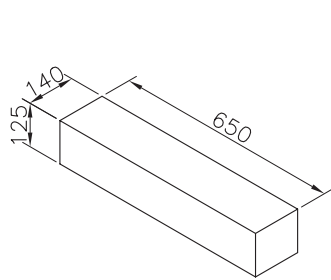
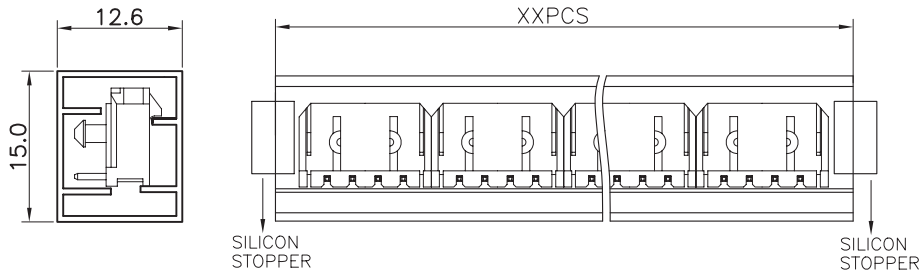
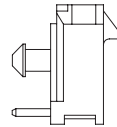
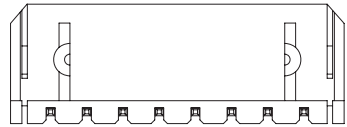
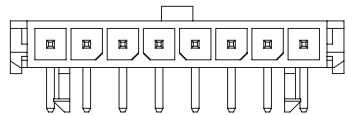
SOLDERING
 WAVE AND REFLOW PROCESS

PACKAGING
 TUBE

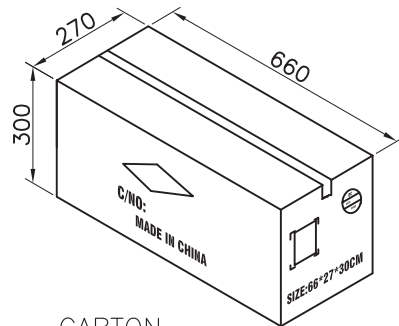
DIMENSION
 A = 3.00 x (NB. PIN - 1)
 B = 3.00 x (NB. PIN + 1) + 0.65
 C = 3.00 x (NB. PIN - 3) + 1.70

PCB LAYOUT - COMPONENT VIEW

RoHS Compliant				PROJECTION: 	GENERAL TOLERANCE .X = +/- 0.2 .XX = +/- 0.15	
G	29-JUL-13	DWG & CARAC	QL			
F	06-JUL-12	PLASTIC	GG			
E	18-NOV-09	STANDARD	JP			
D	23-AVR-09	PACKAGING	JC	APPROVAL: RJ	UNIT: MM	DESCRIPTION: 3.00MM MALE SINGLE ROW RIGHT ANGLE HEADER WITH PLASTIC PEGS WERI PART NO: 662 0xx 110 22
C	31-DEC-07	SOLDERING	CH		SCALE:	
B	01-MAR-07	PDF	EC		SHEET: 1/2	
A	05-SEP-06	ROHS	SEA		DRAW: PEARL	
REV	DATE	FILE	BY			SIZE A4



INNER CARTON



CARTON

Note:

1,Dimension

Tube Size: L=635mm

Inner Carton Size:650(L)X140(W)X125(H) (mm)

Carton Size:660(L)X270(W)X300(H) (mm)

2,Quantity:

72 Tube/Inner Carton

4 Inner Carton/Carton

Pin	Pcs/Tube	Pcs/Inner Carton	Pcs/Carton
2	63	4536	18144
3	48	3456	13824
4	39	2808	11232
5	32	2304	9216
6	28	2016	8064
7	24	1728	6912
8	22	1584	6336
9	20	1440	5760
10	18	1296	5184
11	16	1152	4608
12	15	1080	4320

RoHS Compliant

G			
F			
E			
D			
C			
B			
A			
REV	DATE	FILE	BY

PROJECTION:

GENERAL TOLERANCE
.X = +/- 0.2
.XX = +/- 0.15

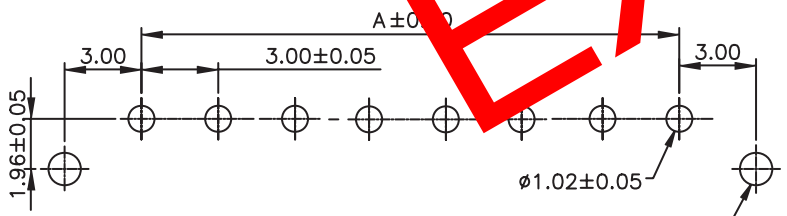
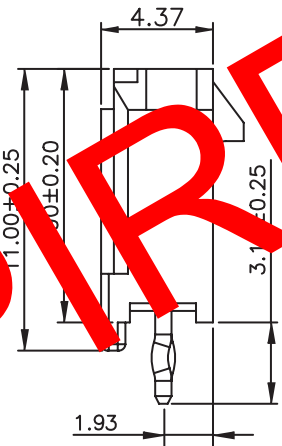
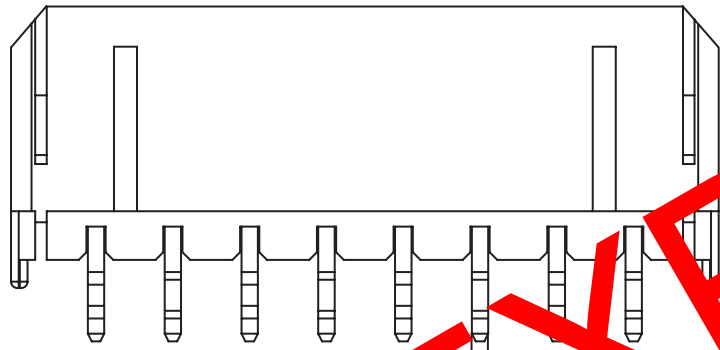
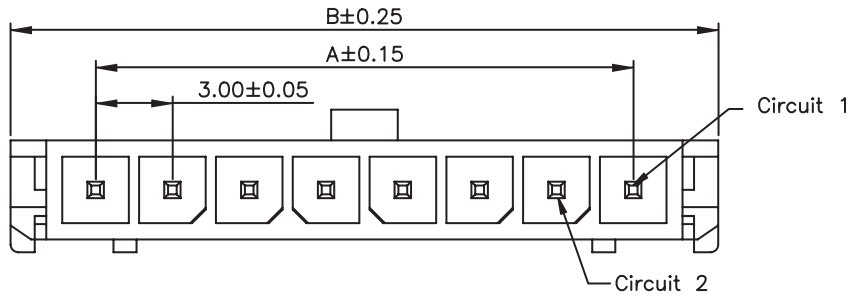


APPROVAL: RJ

UNIT: MM
SCALE:
SHEET: 2/2
DRAW: PEARL

DESCRIPTION: 3.00MM MALE SINGLE ROW RIGHT ANGLE HEADER WITH PLASTIC PEGS
WERI PART NO: 6620 xx 11022_TPK

SIZE
A4



PCB LAYOUT - COMPONENT VIEW

TECHNICAL CHARACTERISTICS

MATERIAL
 INSULATOR: PA 9T
 COLOR: BLACK
 CONTACT MATERIAL: COPPER ALLOY
 CONTACT TYPE: STAMPED
 CONTACT PLATING: TIN
 QUALITY CLASS: 25 MATING CYCLES
 PITCH: 3.00MM

ENVIRONMENTAL
 OPERATING TEMPERATURE: -25 UP TO 105°C
 FLAMMABILITY RATING: UL94-V0
 COMPLIANCE: LEAD FREE AND ROHS

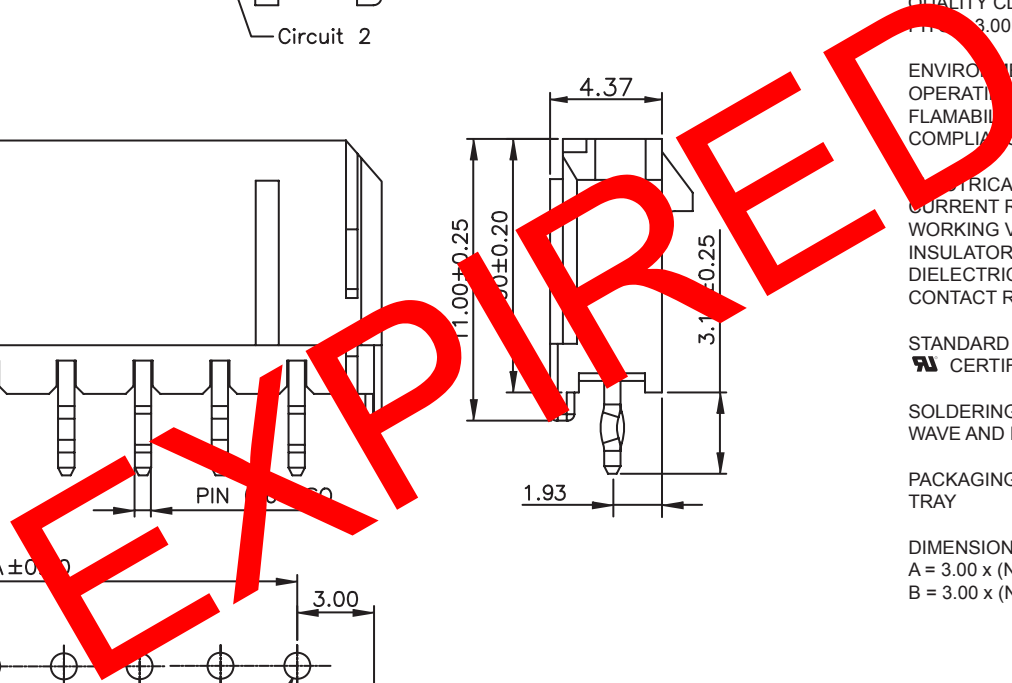
ELECTRICAL
 CURRENT RATING: 5A
 WORKING VOLTAGE: 250V AC
 INSULATOR RESISTANCE: >1000 MOHM
 DIELECTRIC WITHSTANDING VOLTAGE: 1500V AC/MN
 CONTACT RESISTANCE: 10 mOHM MAX

STANDARD
 CERTIFIED: E323964 / MODEL NUMBER 662-S

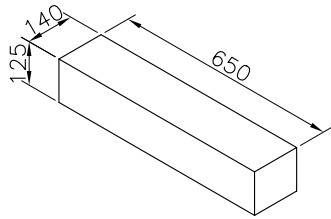
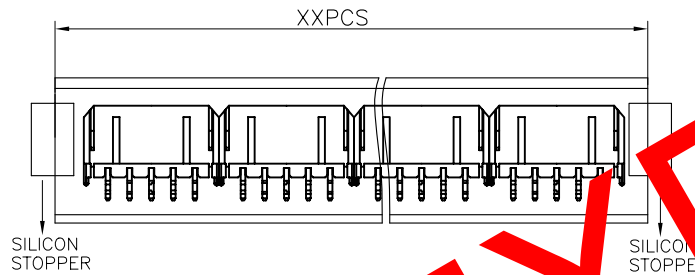
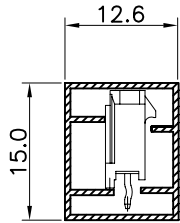
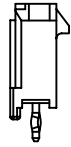
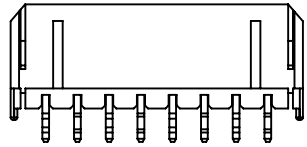
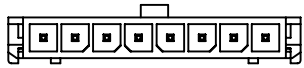
SOLDERING
 WAVE AND REFLOW PROCESS

PACKAGING
 TRAY

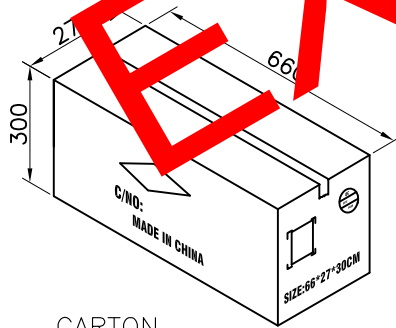
DIMENSION
 A = 3.00 x (NB. PIN - 1)
 B = 3.00 x (NB. PIN + 1) + 0.65



RoHS Compliant				PROJECTION: 	GENERAL TOLERANCE .X = +/- 0.2 .XX = +/- 0.15		DESCRIPTION: 3.00MM MALE SINGLE ROW VERTICAL HEADER	SIZE A4
G	06-JUL-12	PLASTIC	GG					
F	06-APR-10	ADD DIMENTION	JP					
E	18-NOV-09	STANDARD	JP					
D	23-AVR-09	PACKAGING	JC	APPROVAL: RJ	UNIT: MM	WERI PART NO: 662 0xx 111 22		
C	31-DEC-07	SOLDERING	CH		SCALE:			
B	27-FEB-07	PDF	EC		SHEET: 1/2			
A	18-SEP-06	ROHS	SEA		DRAW: PEARL			
REV	DATE	FILE	BY					



INNER CARTON



CARTON

Note:

1, Dimension

Tube Size: L=635mm

Inner Carton Size: 650(L)X140(W)X125(H) (mm)

Carton Size: 660(L)X270(W)X300(H) (mm)

2, Quantity:

100 Tube/Inner Carton

4 Inner Carton/Carton

Pin.	Pcs/Tube	Pcs/Inner Carton	Pcs/Carton
2	63	6300	25200
3	48	4800	19200
4	39	3900	15600
5	32	3200	12800
6	28	2800	11200
7	24	2400	9600
8	22	2200	8800
9	20	2000	8000
10	18	1800	7200
11	16	1600	6400
12	15	1500	6000

EXPIRED

RoHS Compliant

G			
F			
E			
D			
C			
B			
A			
REV	DATE	FILE	BY

PROJECTION:

GENERAL TOLERANCE
.X = +/- 0.2
.XX = +/- 0.15

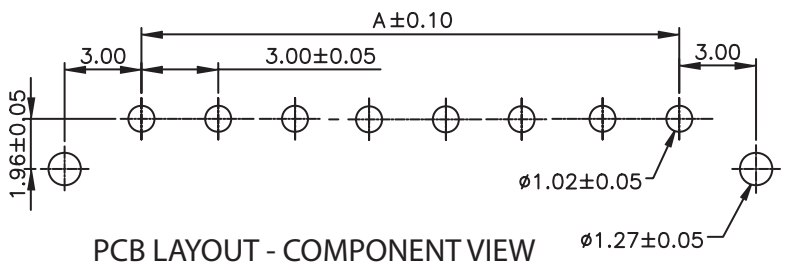
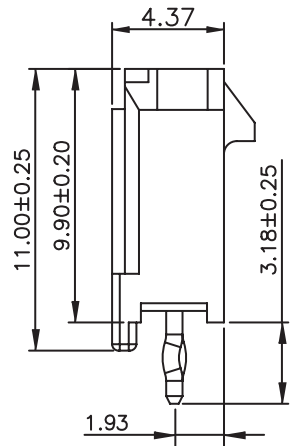
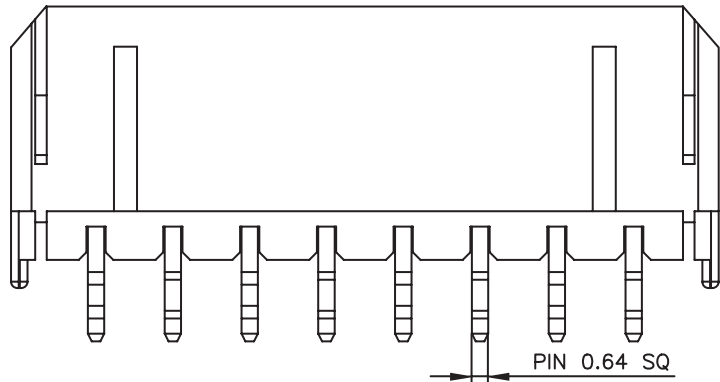
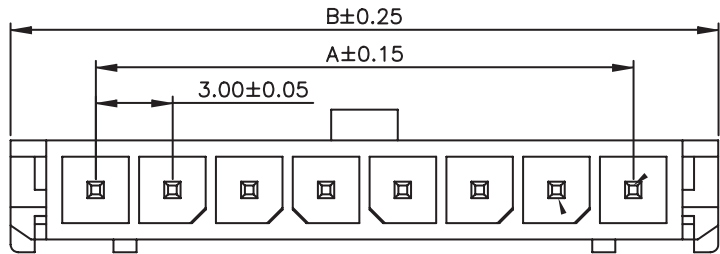
DESCRIPTION: 3.00MM MALE SINGLE ROW VERTICAL HEADER

APPROVAL: RJ

UNIT: MM
SCALE:
SHEET: 2/2
DRAW: PEARL

WERI PART NO: 6620 xx 11122_TPK

SIZE
A4



TECHNICAL CHARACTERISTICS

MATERIAL
 INSULATOR: LCP
 COLOR: BLACK
 CONTACT MATERIAL: COPPER ALLOY
 CONTACT TYPE: STAMPED
 CONTACT PLATING: TIN
 QUALITY CLASS: 25 MATING CYCLES
 PITCH: 3.00MM

ENVIRONMENTAL
 OPERATING TEMPERATURE: -40 UP TO 105°C
 FLAMABILITY RATING: UL94-V0
 COMPLIANCE: LEAD FREE AND ROHS

ELECTRICAL
 CURRENT RATING: 5A
 WORKING VOLTAGE: 250V AC
 INSULATOR RESISTANCE: >1000 MOHM
 DIELECTRIC WITHSTANDING VOLTAGE: 1500V AC/MN
 CONTACT RESISTANCE: 10 mOHM MAX

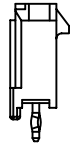
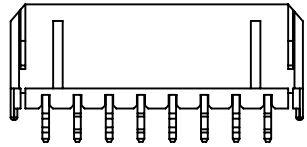
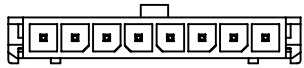
STANDARD
 CERTIFIED: E323964 / MODEL NUMBER 662-S

SOLDERING
 WAVE AND REFLOW PROCESS

PACKAGING
 TRAY

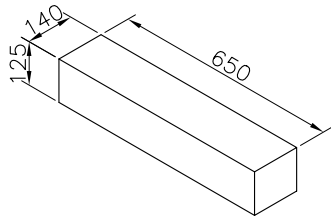
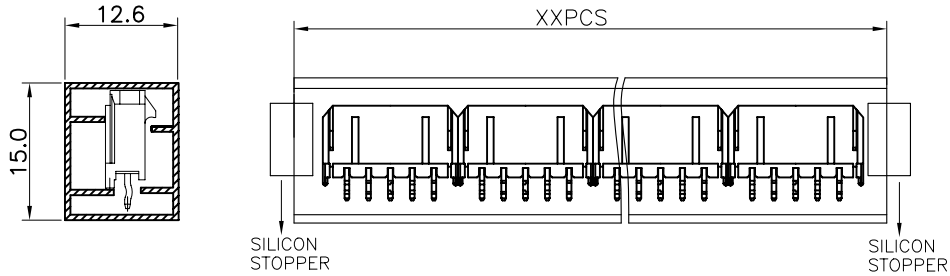
DIMENSION
 A = 3.00 x (NB. PIN - 1)
 B = 3.00 x (NB. PIN + 1) + 0.65

RoHS Compliant				PROJECTION: 	GENERAL TOLERANCE .X = +/- 0.2 .XX = +/- 0.15		DESCRIPTION: 3.00MM MALE SINGLE ROW VERTICAL HEADER	SIZE A4
APPROVAL: RJ								
H	29-JUL-13	DWG & CARAC	QL	SCALE:	SHEET: 1/2			
REV	DATE	FILE	BY	DRAW: PEARL				

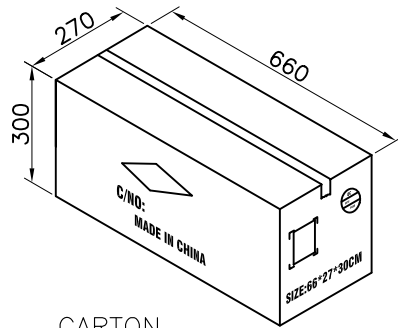


Note:
 1,Dimension
 Tube Size: L=635mm
 Inner Carton Size:650(L)X140(W)X125(H) (mm)
 Carton Size:660(L)X270(W)X300(H) (mm)
 2,Quantity:
 100 Tube/Inner Carton
 4 Inner Carton/Carton

Pin.	Pcs/Tube	Pcs/Inner Carton	Pcs/Carton
2	63	6300	25200
3	48	4800	19200
4	39	3900	15600
5	32	3200	12800
6	28	2800	11200
7	24	2400	9600
8	22	2200	8800
9	20	2000	8000
10	18	1800	7200
11	16	1600	6400
12	15	1500	6000

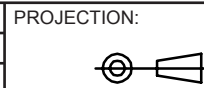


INNER CARTON



CARTON

RoHS Compliant			
G			
F			
E			
D			
C			
B			
A			
REV	DATE	FILE	BY



APPROVAL: RJ

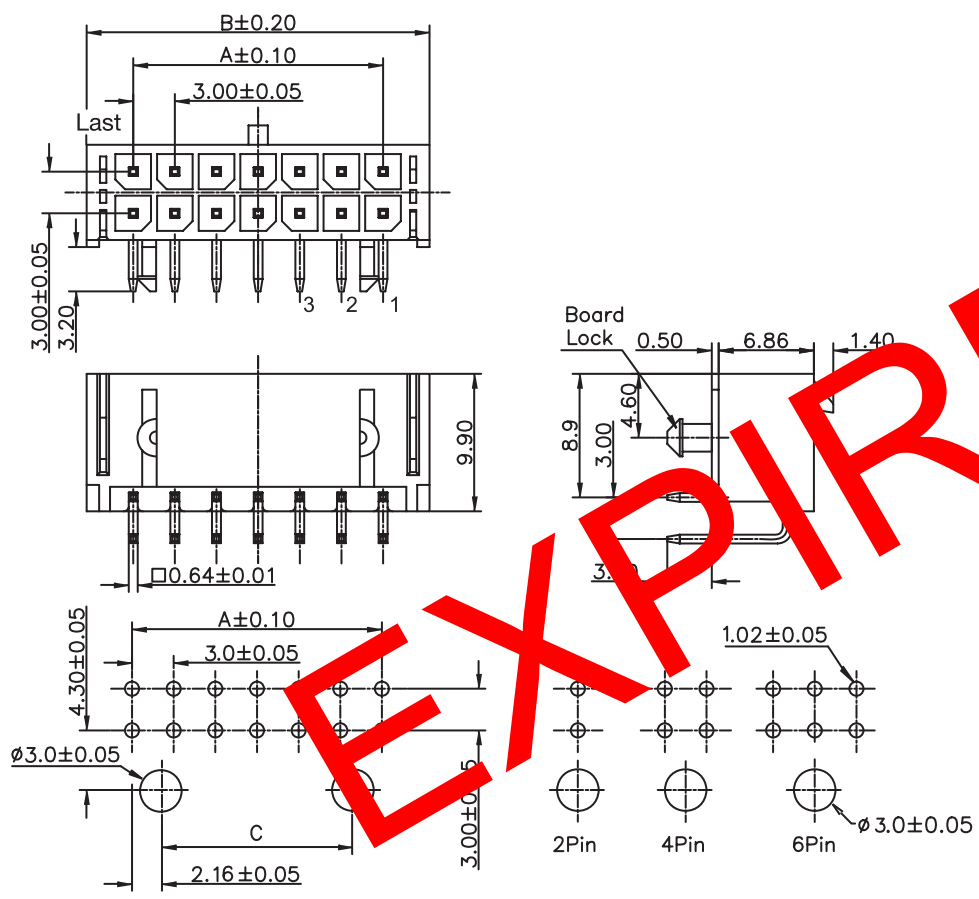
GENERAL TOLERANCE
 .X = +/- 0.2
 .XX = +/- 0.15

UNIT: MM
 SCALE:
 SHEET: 2/2
 DRAW: PEARL



DESCRIPTION: 3.00MM MALE SINGLE ROW VERTICAL HEADER
 WERI PART NO: 6620 xx 11122_TPK

SIZE
A4



PCB LAYOUT - COMPONENT VIEW

TECHNICAL CHARACTERISTICS

MATERIAL
 INSULATOR: NYLON 9T
 FLAMABILITY RATING: UL94-V0
 COLOR: BLACK
 CONTACT MATERIAL: COPPER ALLOY
 CONTACT TYPE: STAMPED
 CONTACT PLATING: TIN
 QUALITY CLASS: 25 MATING CYCLES
 PITCH: 3.00MM

ENVIRONMENTAL
 OPERATING TEMPERATURE: -25 UP TO 105°C
 COMPLIANCE: LEAD FREE AND ROHS

ELECTRICAL
 CURRENT RATING: 5A
 WORKING VOLTAGE: 250V AC
 INSULATOR RESISTANCE: >1000 MOHM
 DIELECTRIC WITHSTANDING VOLTAGE: 1500V AC/MN
 CONTACT RESISTANCE: 10 mOHM MAX

STANDARD
 CERTIFIED: E323964 / MODEL NUMBER 662-R

SOLDERING
 WAVE AND REFLOW PROCESS

PACKAGING
 TUBE

DIMENSION
 A = 3.00 x (NB. PIN / 2 - 1)
 B = 3.00 x (NB. PIN / 2 + 1) + 0.70

NB. PIN	C	NB. PIN	C
2 to 6	-	16	16.68
8	4.68	18	19.68
10	7.68	20	22.68
12	10.68	22	25.68
14	13.68	24	28.68

RoHS Compliant			
G	06-JUL-12	PLASTIC	GG
F	20-DEC-11	C DIMENSION	GG
E	19-SEP-11	LAYOUT	GG
D	10-OCT-10	DIAMETER	GG
C	30-JUL-10	HOLE DIAMETER	GG
B	18-NOV-09	STANDARD	JP
A	03-AUG-09	DIMENSION C	JP
REV	DATE	FILE	BY

PROJECTION:	
APPROVAL: RJ	

GENERAL TOLERANCE	.X = +/- 0.2
	.XX = +/- 0.15
UNIT: MM	
SCALE:	
SHEET: 1/1	
DRAW: PEARL	

 WÜRTH ELEKTRONIK
DESCRIPTION: 3.00MM MALE DUAL ROW RIGHT ANGLE HEADER WITH PLASTIC PEGS
WERI PART NO: 662 0xx 210 22

SIZE A4

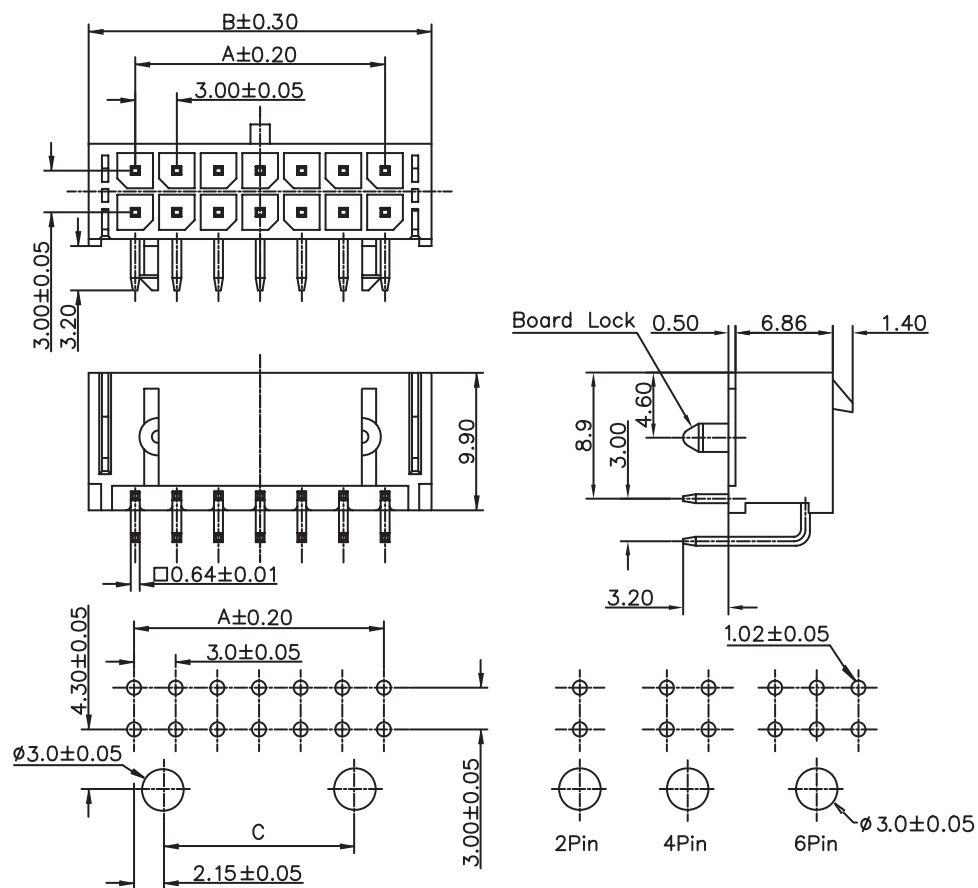
1

2

3

4

5



PCB LAYOUT - COMPONENT VIEW

TECHNICAL CHARACTERISTICS

MATERIAL
 INSULATOR: LCP
 FLAMABILITY RATING: UL94-V0
 COLOR: BLACK
 CONTACT MATERIAL: COPPER ALLOY
 CONTACT TYPE: STAMPED
 CONTACT PLATING: TIN
 QUALITY CLASS: 25 MATING CYCLES
 PITCH: 3.00MM

ENVIRONMENTAL
 OPERATING TEMPERATURE: -40 UP TO 105°C
 COMPLIANCE: LEAD FREE AND ROHS

ELECTRICAL
 CURRENT RATING: 5A
 WORKING VOLTAGE: 250V AC
 INSULATOR RESISTANCE: >1000 MOHM
 DIELECTRIC WITHSTANDING VOLTAGE: 1500V AC/MN
 CONTACT RESISTANCE: 10 mOHM MAX

STANDARD
 CERTIFIED: E323964 / MODEL NUMBER 662-R

SOLDERING
 WAVE AND REFLOW PROCESS

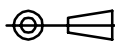
PACKAGING
 TUBE

DIMENSION
 A = 3.00 x (NB. PIN / 2 - 1)
 B = 3.00 x (NB. PIN / 2 + 1) + 0.70

NB. PIN	C	NB. PIN	C
2 to 6	-	16	16.68
8	4.68	18	19.68
10	7.68	20	22.68
12	10.68	22	25.68
14	13.68	24	28.68

RoHS Compliant

PROJECTION:



GENERAL TOLERANCE

.X = +/- 0.2

.XX = +/- 0.15



APPROVAL: RJ

UNIT: MM

SCALE:

SHEET: 1/1

DRAW: PEARL

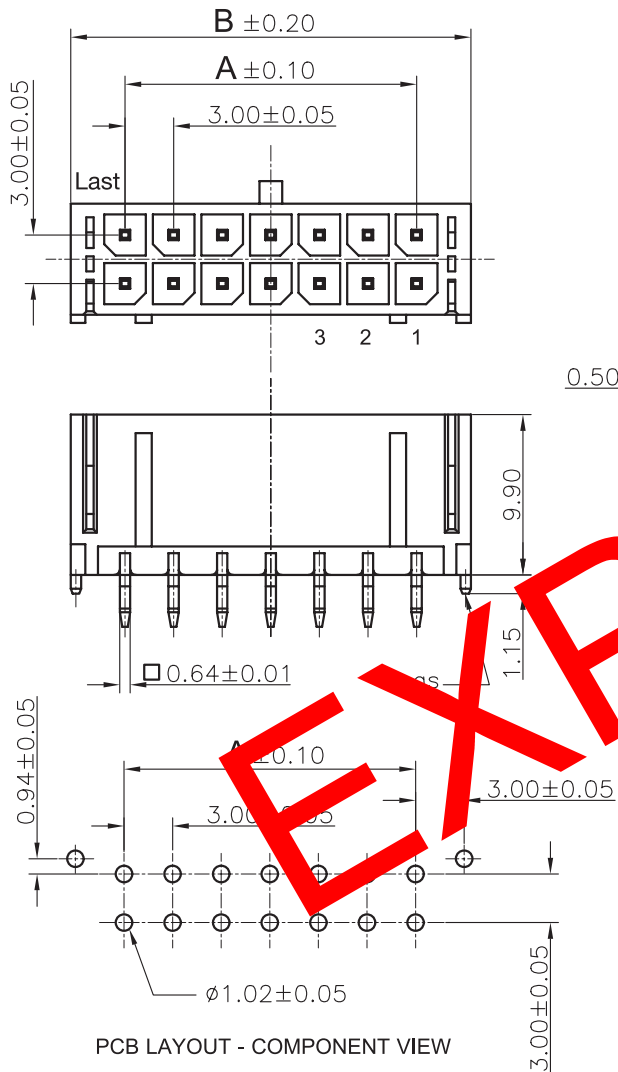
DESCRIPTION: 3.00MM MALE DUAL ROW RIGHT ANGLE HEADER WITH PLASTIC PEGS

WERI PART NO: 662 0xx 210 22

SIZE

A4

H	29-JUL-13	DWG & CARAC	QL
REV	DATE	FILE	BY




PCB LAYOUT - COMPONENT VIEW

TECHNICAL CHARACTERISTICS

MATERIAL
 INSULATOR: NYLON 9T
 FLAMABILITY RATING: UL94-V0
 COLOR: BLACK
 CONTACT MATERIAL: COPPER ALLOY
 CONTACT TYPE: STAMPED
 CONTACT PLATING: TIN
 QUANTITY CLASS: 25 MATING CYCLES
 PITCH: 3.00MM

ENVIRONMENTAL
 OPERATING TEMPERATURE: -25 UP TO 105°C
 COMPLIANCE: LEAD FREE AND ROHS

ELECTRICAL
 CURRENT RATING: 5A
 WORKING VOLTAGE: 250V AC
 INSULATOR RESISTANCE: >1000 MOHM
 DIELECTRIC WITHSTANDING VOLTAGE: 1500V AC/MN
 CONTACT RESISTANCE: 10 mOHM MAX

STANDARD
 CERTIFIED: E323964 / MODEL NUMBER 662-S

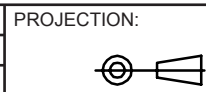
SOLDERING
 WAVE AND REFLOW PROCESS

PACKAGING
 TRAY

DIMENSION
 A = 3.00 x (NB. PIN / 2 - 1)
 B = 3.00 x (NB PIN / 2 + 1) + 0.70

EXPIRED

RoHS Compliant			
H	06-JUL-12	PLASTIC	GG
REV	DATE	FILE	BY



GENERAL TOLERANCE
 .X = +/- 0.2
 .XX = +/- 0.15

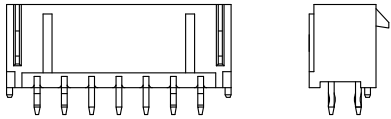
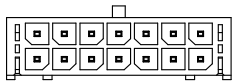


APPROVAL: RJ

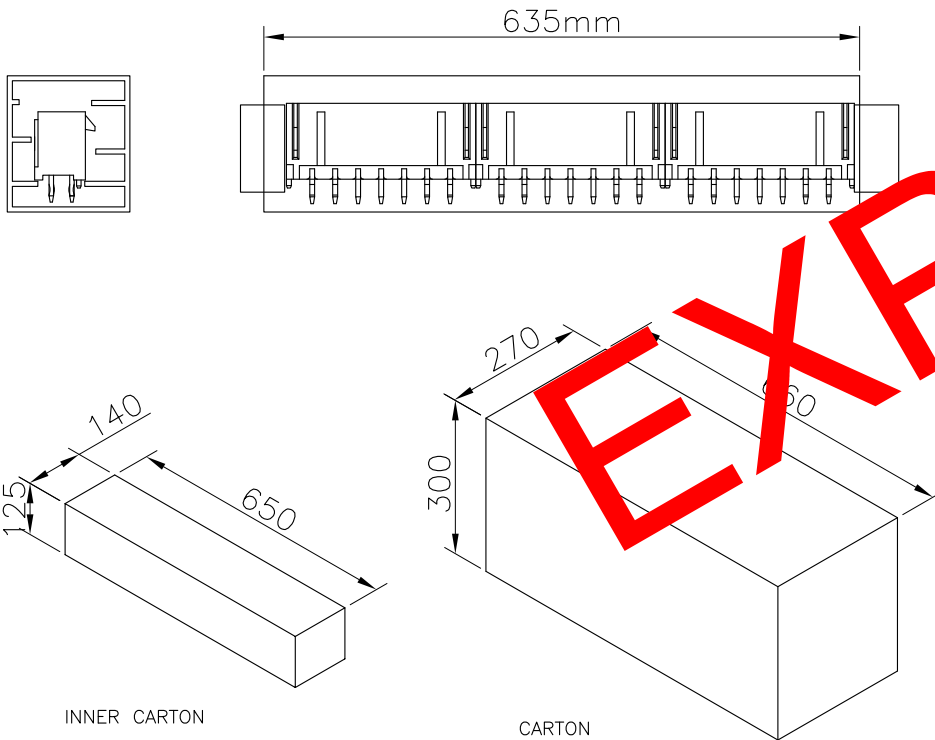
UNIT: MM
 SCALE:
 SHEET: 1/2
 DRAW: PEARL

DESCRIPTION: 3.00MM MALE DUAL ROW VERTICAL HEADER
 WERI PART NO: 662 0xx 211 22

SIZE
A4



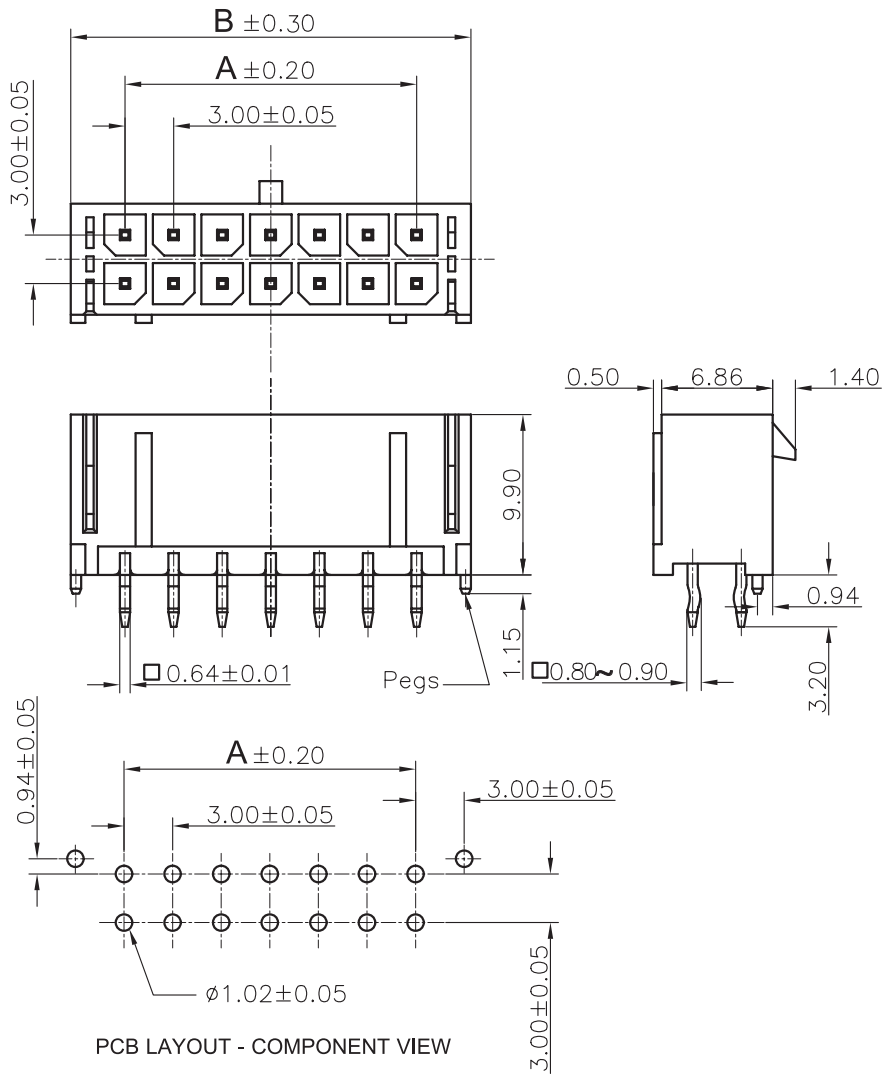
Note:
 1,Dimension
 Tube Size: L=635mm
 Inner Carton Size:650(L)X140(W)X125(H) (mm)
 Carton Size:660(L)X270(W)X300(H) (mm)
 2,Quantity:



Pin	Pcs/Tube	Pcs/Inner Carton	Pcs/Carton
02	91	5824	23296
04	63	4032	16128
06	48	3072	12288
08	36	2496	9984
10	32	2048	8192
12	28	1792	7169
14	24	1536	6144
16	22	1408	5632
18	20	1280	5120
20	18	1152	4608
22	16	1024	4096
24	15	960	3840

EXPIRED

RoHS Compliant				PROJECTION: 	GENERAL TOLERANCE .X = +/- 0.2 .XX = +/- 0.15		DESCRIPTION: 3.00MM MALE DUAL ROW VERTICAL HEADER	SIZE A4
G								
F					SCALE:			
E					SHEET: 2/2			
D					DRAW: PEARL			
C								
B								
A								
REV	DATE	FILE	BY					




TECHNICAL CHARACTERISTICS

MATERIAL
 INSULATOR: LCP
 FLAMABILITY RATING: UL94-V0
 COLOR: BLACK
 CONTACT MATERIAL: COPPER ALLOY
 CONTACT TYPE: STAMPED
 CONTACT PLATING: TIN
 QUALITY CLASS: 25 MATING CYCLES
 PITCH: 3.00MM

ENVIRONMENTAL
 OPERATING TEMPERATURE: -40 UP TO 105°C
 COMPLIANCE: LEAD FREE AND ROHS

ELECTRICAL
 CURRENT RATING: 5A
 WORKING VOLTAGE: 250V AC
 INSULATOR RESISTANCE: >1000 MOHM
 DIELECTRIC WITHSTANDING VOLTAGE: 1500V AC/MN
 CONTACT RESISTANCE: 10 mOHM MAX

STANDARD
 CERTIFIED: E323964 / MODEL NUMBER 662-S

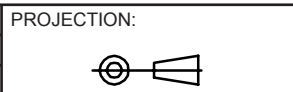
SOLDERING
 WAVE AND REFLOW PROCESS

PACKAGING
 TRAY

DIMENSION
 A = 3.00 x (NB. PIN / 2 - 1)
 B = 3.00 x (NB PIN / 2 + 1) + 0.70

PCB LAYOUT - COMPONENT VIEW

RoHS Compliant			
I	29-JUL-13	DWG & CARAC	QL
H	06-JUL-12	PLASTIC	GG
REV	DATE	FILE	BY



GENERAL TOLERANCE
 .X = +/- 0.2
 .XX = +/- 0.15

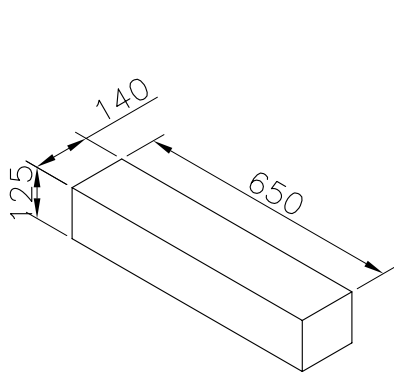
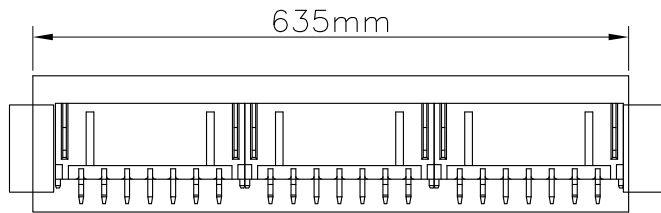
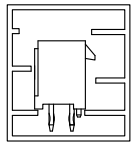
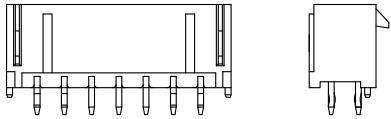
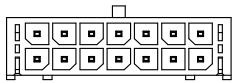


APPROVAL: RJ

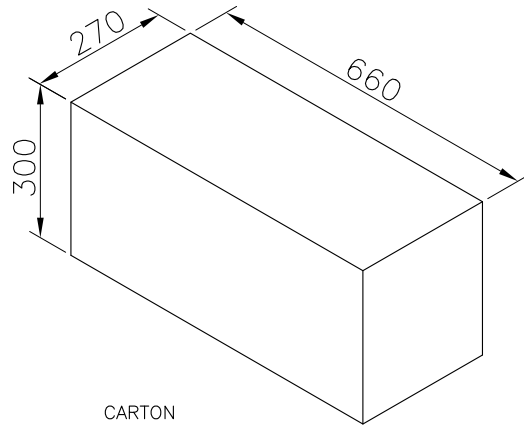
UNIT: MM
 SCALE:
 SHEET: 1/2
 DRAW: PEARL

DESCRIPTION: 3.00MM MALE DUAL ROW VERTICAL HEADER
 WERI PART NO: 662 0xx 211 22

SIZE
A4



INNER CARTON

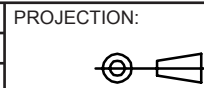


CARTON

Note:
 1,Dimension
 Tube Size: L=635mm
 Inner Carton Size:650(L)X140(W)X125(H) (mm)
 Carton Size:660(L)X270(W)X300(H) (mm)
 2,Quantity:

Pin.	Pcs/Tube	Pcs/Inner Carton	Pcs/Carton
02	91	5824	23296
04	63	4032	16128
06	48	3072	12288
08	39	2496	9984
10	32	2048	8192
12	28	1792	7169
14	24	1536	6144
16	22	1408	5632
18	20	1280	5120
20	18	1152	4608
22	16	1024	4096
24	15	960	3840

RoHS Compliant			
G			
F			
E			
D			
C			
B			
A			
REV	DATE	FILE	BY



APPROVAL: RJ

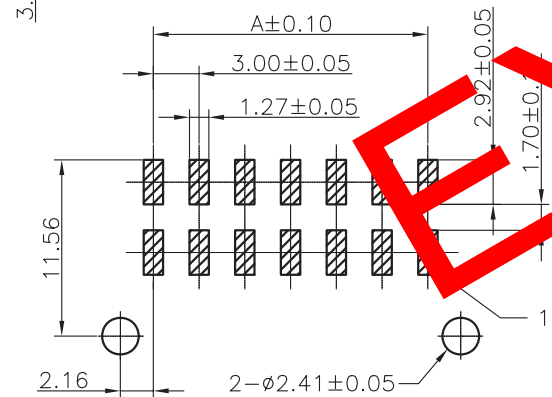
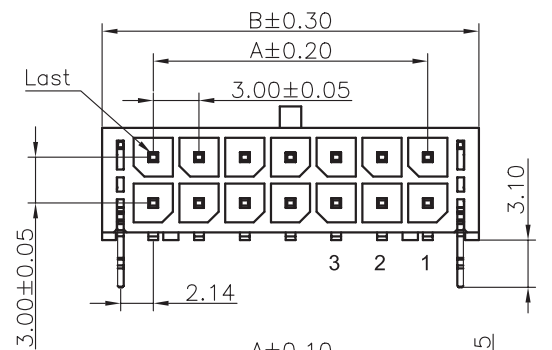
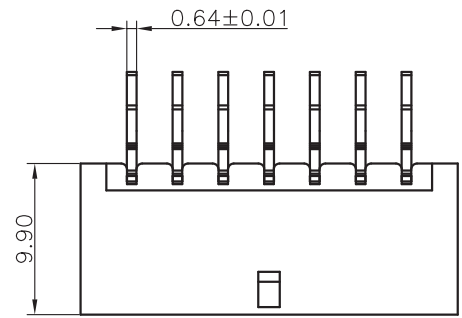
GENERAL TOLERANCE
 .X = +/- 0.2
 .XX = +/- 0.15



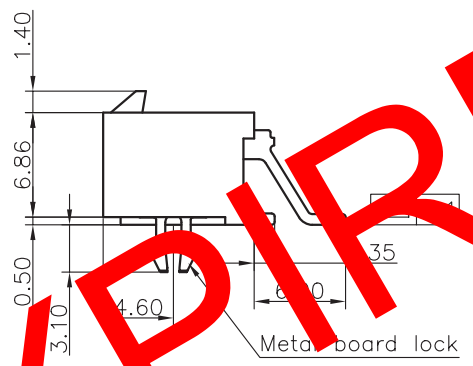
UNIT: MM
 SCALE:
 SHEET: 2/2
 DRAW: PEARL

DESCRIPTION: 3.00MM MALE DUAL ROW VERTICAL HEADER
 WERI PART NO: 6620 xx 21122_TPK

SIZE
A4



PCB LAYOUT - COMPONENT VIEW



TECHNICAL CHARACTERISTICS

MATERIAL
 INSULATOR: NYLON 9T
 FLAMABILITY RATING: UL94-V0
 COLOR: BLACK
 CONTACT MATERIAL: COPPER ALLOY
 CONTACT TYPE: STAMPED
 CONTACT PLATING: TIN
 QUALITY CLASS: 25 MATING CYCLES
 PITCH: 3.00MM

ENVIRONMENTAL
 OPERATING TEMPERATURE: -25 UP TO 105°C
 COMPLIANCE: LEAD FREE AND ROHS

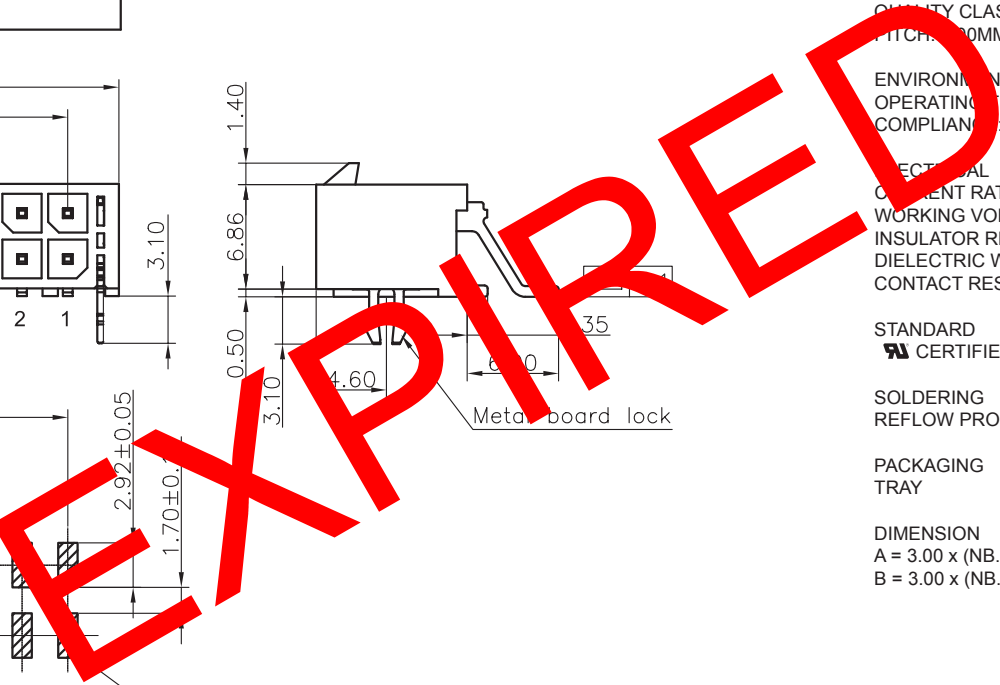
ELECTRICAL
 CURRENT RATING: 5A
 WORKING VOLTAGE: 250V AC
 INSULATOR RESISTANCE: >1000 MOHM
 DIELECTRIC WITHSTANDING VOLTAGE: 1500V AC/MN
 CONTACT RESISTANCE: 10 mOHM MAX

STANDARD
 CERTIFIED: E323964 / MODEL NUMBER 662-R

SOLDERING
 REFLOW PROCESS ONLY

PACKAGING
 TRAY

DIMENSION
 A = 3.00 x (NB. PIN / 2 - 1)
 B = 3.00 x (NB. PIN / 2 + 1) + 0.70



RoHS Compliant			
G			
F			
E	06-JUL-12	PLASTIC	GG
D	18-NOV-09	STANDARD	JP
C	27-JUL-09	REAR PIN	JP□
B□	23-AVR-09	PACKAGING	JC
A□	04-OCT-04	PDF DRAW□	□ □ □
REV	DATE	FILE	BY

PROJECTION:	
APPROVAL: RJ	

GENERAL TOLERANCE
.X = +/- 0.2
.XX = +/- 0.15
UNIT: MM
SCALE:
SHEET: 1/2
DRAW: JACK

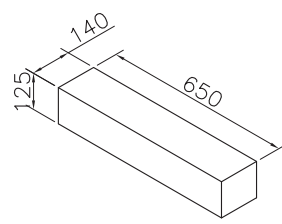
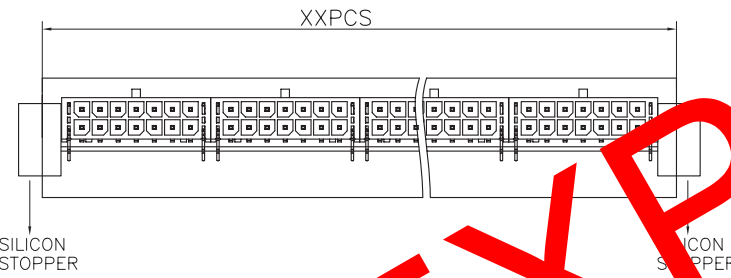
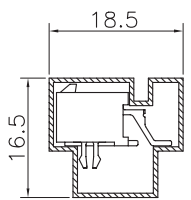
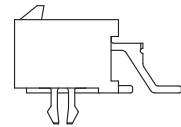
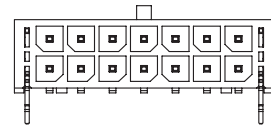
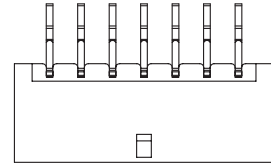
	DESCRIPTION: 3.00MM MALE DUAL ROW SMT RIGHT ANGLE HEADER WITH THROUGH HOLE RETENTION METAL CLIP
	WERI PART NO: 662 0xx 230 822

SIZE	A4

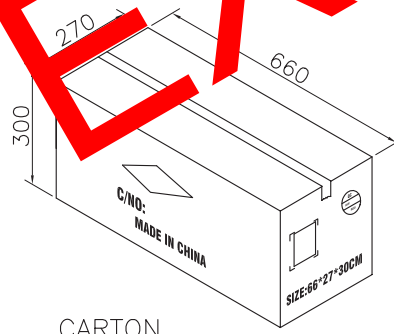
Note:
 1,Dimension
 Tube Size: L=635mm
 Inner Carton Size:650(L)X140(W)X125(H) (mm)
 Carton Size:660(L)X270(W)X300(H) (mm)
 2,Quantity:
 42 Tube/Inner Carton
 4 Inner Carton/Carton

Pin	Pcs/Tube	Pcs/Inner carton	Pcs/Carton
2	91	3822	15288
4	63	2646	10584
6	48	2016	8064
8	39	1638	6552
10	32	1344	5376
12	28	1176	4704
14	24	1008	4032
16	22	924	3696
18	20	840	3360
20	18	756	3024
22	16	672	2688
24	15	630	2520

EXPIRED

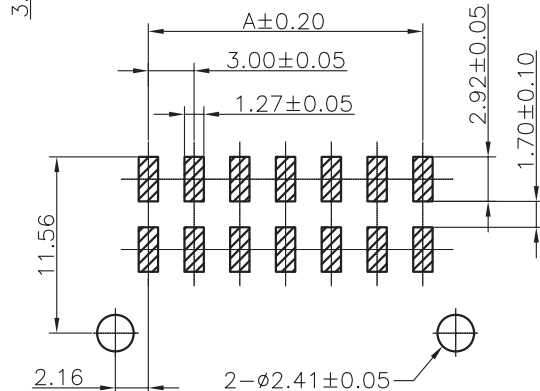
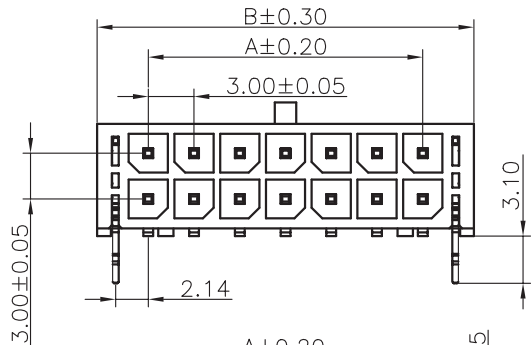
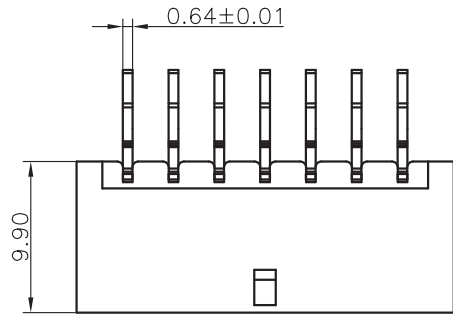


INNER CARTON

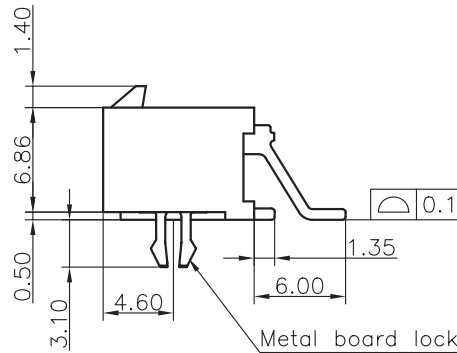


CARTON

RoHS Compliant				PROJECTION: 	GENERAL TOLERANCE .X = +/- 0.2 .XX = +/- 0.15		DESCRIPTION: 3.00MM MALE DUAL ROW SMT RIGHT ANGLE HEADER WITH THROUGH HOLE RETENTION METAL CLIP WERI PART NO: 6620 xx 230822_TPK	SIZE A4
G								
F				APPROVAL: RJ	UNIT: MM			
E					SCALE:			
D					SHEET: 2/2			
C					DRAW: PEARL			
B								
A								
REV	DATE	FILE	BY					



PCB LAYOUT - COMPONENT VIEW



TECHNICAL CHARACTERISTICS

MATERIAL
 INSULATOR: LCP
 FLAMABILITY RATING: UL94-V0
 COLOR: BLACK
 CONTACT MATERIAL: COPPER ALLOY
 CONTACT TYPE: STAMPED
 CONTACT PLATING: TIN
 QUALITY CLASS: 25 MATING CYCLES
 PITCH: 3.00MM

ENVIRONMENTAL
 OPERATING TEMPERATURE: -40 UP TO 105°C
 COMPLIANCE: LEAD FREE AND ROHS

ELECTRICAL
 CURRENT RATING: 5A
 WORKING VOLTAGE: 250V AC
 INSULATOR RESISTANCE: >1000 MOHM
 DIELECTRIC WITHSTANDING VOLTAGE: 1500V AC/MN
 CONTACT RESISTANCE: 10 mOHM MAX

STANDARD
 CERTIFIED: E323964 / MODEL NUMBER 662-R

SOLDERING
 REFLOW PROCESS ONLY

PACKAGING
 TRAY

DIMENSION
 A = 3.00 x (NB. PIN / 2 - 1)
 B = 3.00 x (NB. PIN / 2 + 1) + 0.70

RoHS Compliant

G			
F	29-JUL-13	DWG & CARAC	QL
E	06-JUL-12	PLASTIC	GG
D	18-NOV-09	STANDARD	JP
C	27-JUL-09	REAR PIN	JP
B	23-AVR-09	PACKAGING	JC
A	04-OCT-04	PDF DRAW	
REV	DATE	FILE	BY

PROJECTION:	
APPROVAL: RJ	

GENERAL TOLERANCE
.X = +/- 0.2
.XX = +/- 0.15
UNIT: MM
SCALE:
SHEET: 1/2
DRAW: JACK

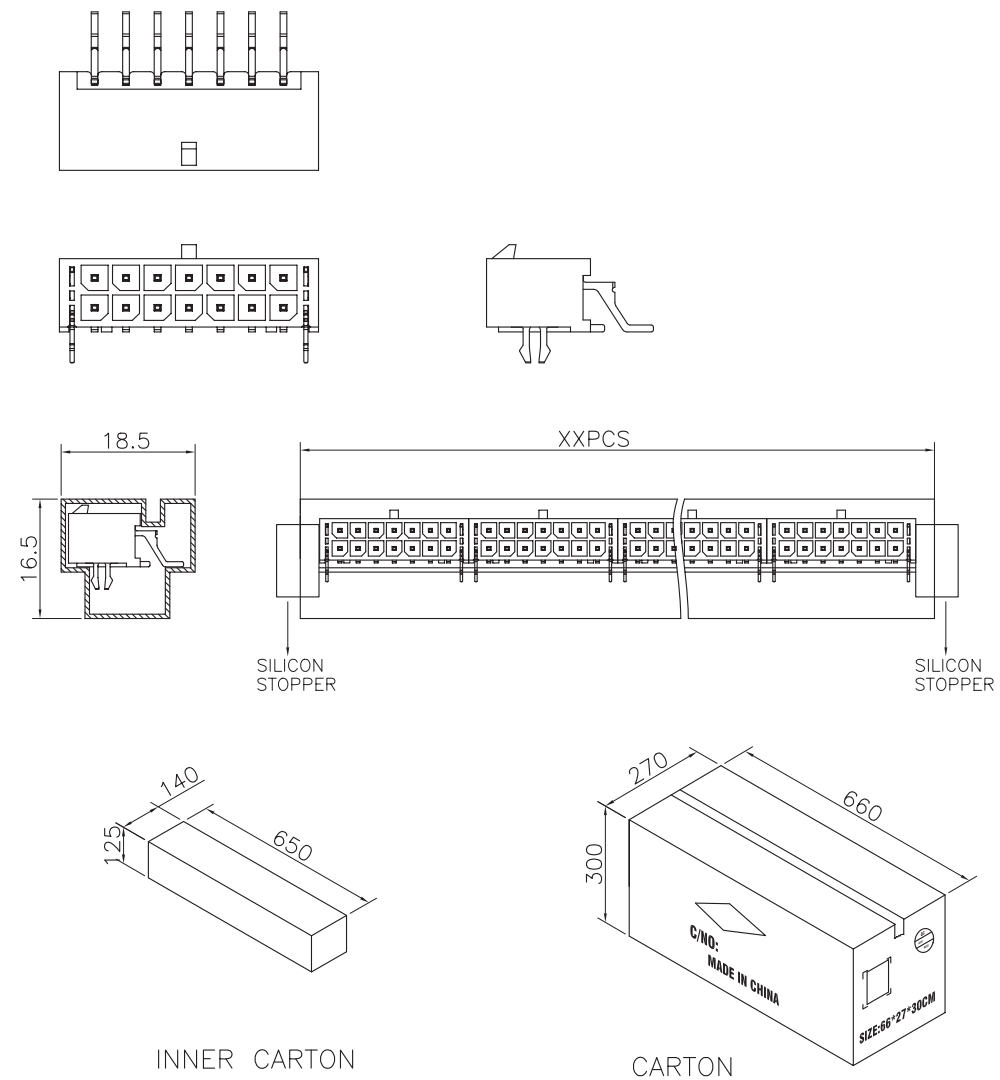


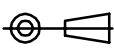

DESCRIPTION: 3.00MM MALE DUAL ROW SMT RIGHT ANGLE HEADER WITH THROUGH HOLE RETENTION METAL CLIP
WERI PART NO: 662 0xx 230 822

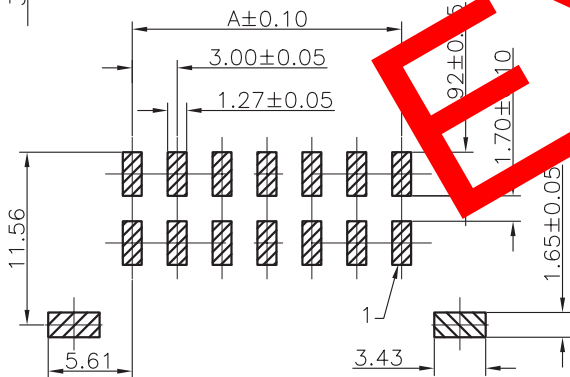
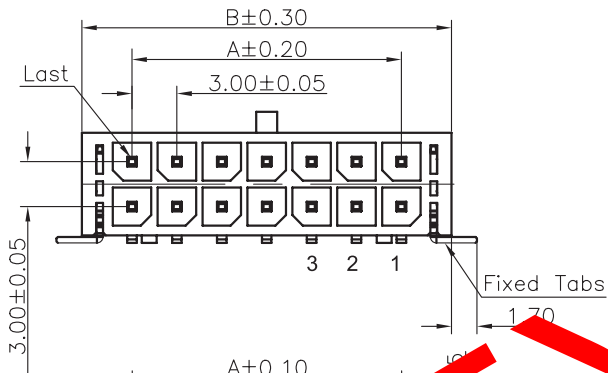
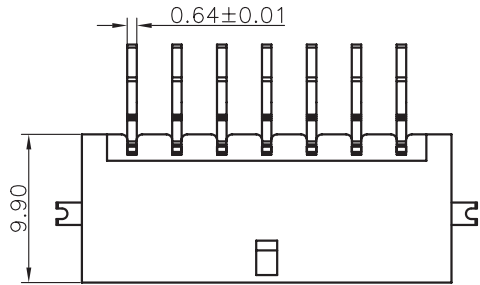
SIZE
A4

Note:
 1,Dimension
 Tube Size: L=635mm
 Inner Carton Size:650(L)X140(W)X125(H) (mm)
 Carton Size:660(L)X270(W)X300(H) (mm)
 2,Quantity:
 42 Tube/Inner Carton
 4 Inner Carton/Carton

Pin.	Pcs/Tube	Pcs/Inner carton	Pcs/Carton
2	91	3822	15288
4	63	2646	10584
6	48	2016	8064
8	39	1638	6552
10	32	1344	5376
12	28	1176	4704
14	24	1008	4032
16	22	924	3696
18	20	840	3360
20	18	756	3024
22	16	672	2688
24	15	630	2520



RoHS Compliant				PROJECTION: 	GENERAL TOLERANCE .X = +/- 0.2 .XX = +/- 0.15		DESCRIPTION: 3.00MM MALE DUAL ROW SMT RIGHT ANGLE HEADER WITH THROUGH HOLE RETENTION METAL CLIP WERI PART NO: 6620 xx 230822_TPK	SIZE A4
G								
F								
E								
D								
C				APPROVAL: RJ	UNIT: MM			
B					SCALE:			
A					SHEET: 2/2			
REV	DATE	FILE	BY		DRAW: PEARL			



PCB LAYOUT
COMPONENT VIEW



TECHNICAL CHARACTERISTICS

MATERIAL
INSULATOR: NYLON 9T
FLAMABILITY RATING: UL94-V0
COLOR: BLACK
CONTACT MATERIAL: COPPER ALLOY
CONTACT TYPE: STAMPED
CONTACT PLATING: TIN
QUALITY CLASS: 25 MATING CYCLES
PITCH: 3.00MM

ENVIRONMENTAL
OPERATING TEMPERATURE: -25 UP TO 105°C
COMPLIANCE: LEAD FREE AND ROHS

ELECTRICAL
CURRENT RATING: 5A
WORKING VOLTAGE: 250V AC
INSULATOR RESISTANCE: >1000 MOHM
DIELECTRIC WITHSTANDING VOLTAGE: 1500V AC/MN
CONTACT RESISTANCE: 10 mOHM MAX

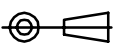

STANDARD
CERTIFIED: E323964 / MODEL NUMBER 662-R

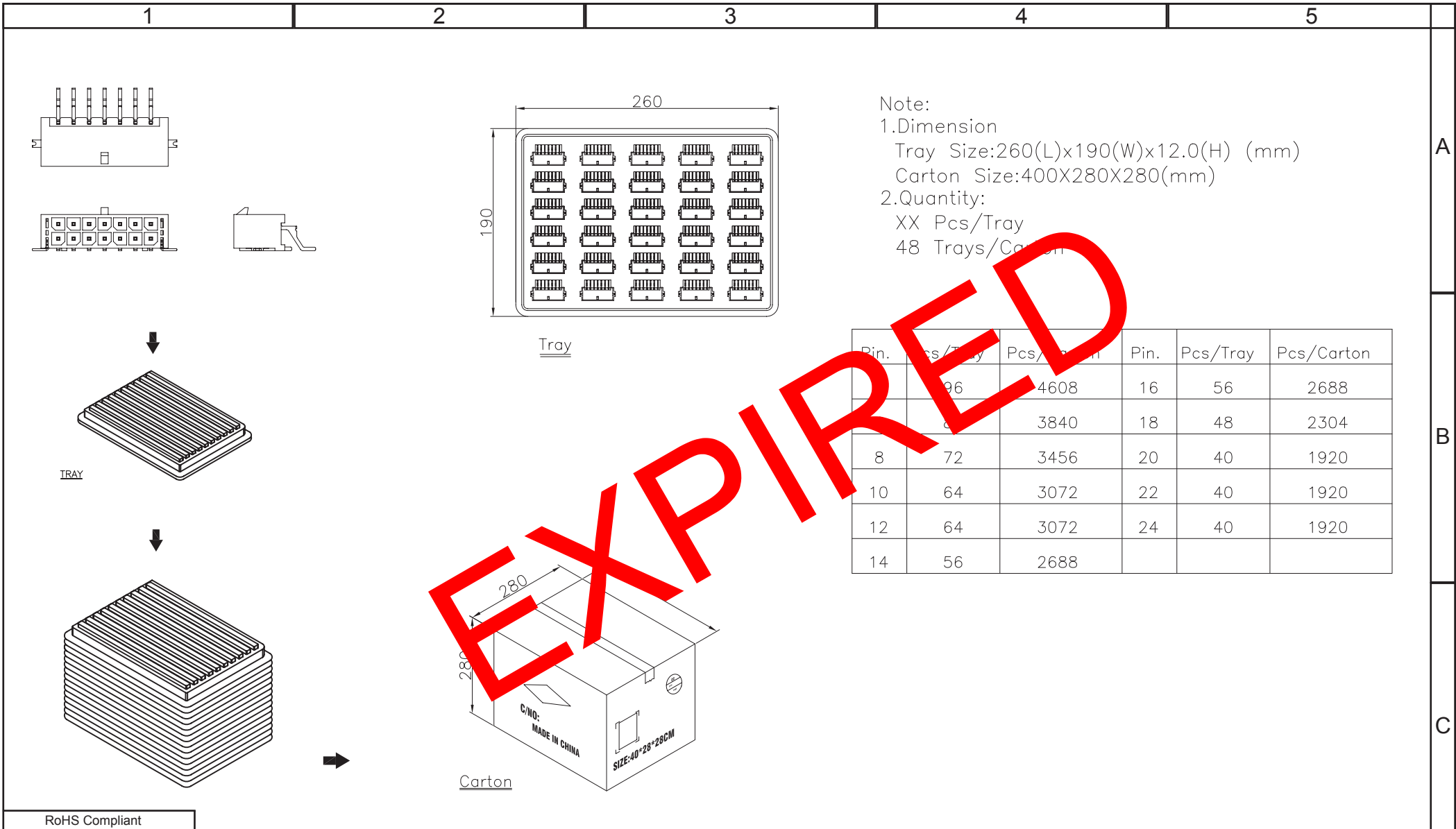
SOLDERING
REFLOW PROCESS ONLY

PACKAGING
TRAY

DIMENSION
A = 3.00 x (NB. PIN / 2 - 1)
B = 3.00 x (NB. PIN / 2 + 1) + 0.70

EXPIRED

RoHS Compliant				PROJECTION: 	GENERAL TOLERANCE .X = +/- 0.2 .XX = +/- 0.15		DESCRIPTION: 3.00MM MALE DUAL ROW SMT RIGHT ANGLE HEADER SMT SOLDER TAB	SIZE A4
G								
F	06-JUL-12	PLASTIC	GG					
E	22-FEB-12	DESCRIPTION	GG					
D	18-NOV-09	STANDARD	JP					
C	27-JUL-09	REAR PIN	JP					
B	23-APR-09	PACKAGING	JC	APPROVAL: RJ	UNIT: MM	WERI PART NO: 662 0xx 231 722		
A	25-FEB-05	PDF DRAW	JP		SCALE:			
REV	DATE	FILE	BY		SHEET: 1/2			
					DRAW: PEARL			



Note:
 1.Dimension
 Tray Size:260(L)x190(W)x12.0(H) (mm)
 Carton Size:400X280X280(mm)
 2.Quantity:
 XX Pcs/Tray
 48 Trays/Cartron

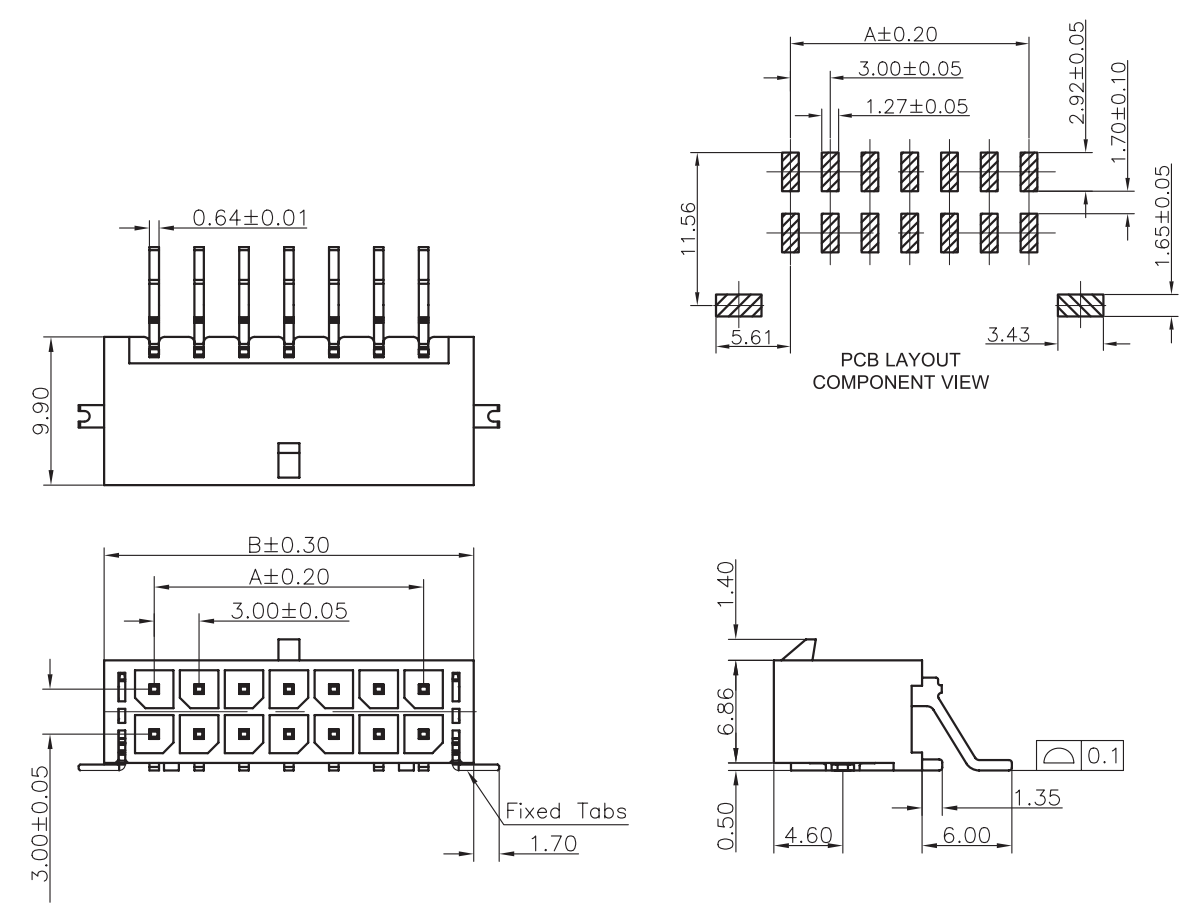
Pin.	Pcs/Tray	Pcs/Cartron	Pin.	Pcs/Tray	Pcs/Cartron
6	96	4608	16	56	2688
8	72	3456	18	48	2304
10	64	3072	20	40	1920
12	64	3072	22	40	1920
14	56	2688	24	40	1920

RoHS Compliant			
G			
F			
E			
D			
C			
B			
A			
REV	DATE	FILE	BY

PROJECTION:	GENERAL TOLERANCE
	.X = +/- 0.2
	.XX = +/- 0.15
APPROVAL: RJ	UNIT: MM
	SCALE:
	SHEET: 2/2
	DRAW: PEARL

	DESCRIPTION: 3.00MM MALE DUAL ROW SMT RIGHT ANGLE HEADER SMT SOLDER TAB
WÜRTH ELEKTRONIK	
WERI PART NO: 6620 xx 231722_TPK	

SIZE
A4



TECHNICAL CHARACTERISTICS

MATERIAL
 INSULATOR: LCP
 FLAMABILITY RATING: UL94-V0
 COLOR: BLACK
 CONTACT MATERIAL: COPPER ALLOY
 CONTACT TYPE: STAMPED
 CONTACT PLATING: TIN
 QUALITY CLASS: 25 MATING CYCLES
 PITCH: 3.00MM

ENVIRONMENTAL
 OPERATING TEMPERATURE: -40 UP TO 105°C
 COMPLIANCE: LEAD FREE AND ROHS

ELECTRICAL
 CURRENT RATING: 5A
 WORKING VOLTAGE: 250V AC
 INSULATOR RESISTANCE: >1000 MOHM
 DIELECTRIC WITHSTANDING VOLTAGE: 1500V AC/MN
 CONTACT RESISTANCE: 10 mOHM MAX

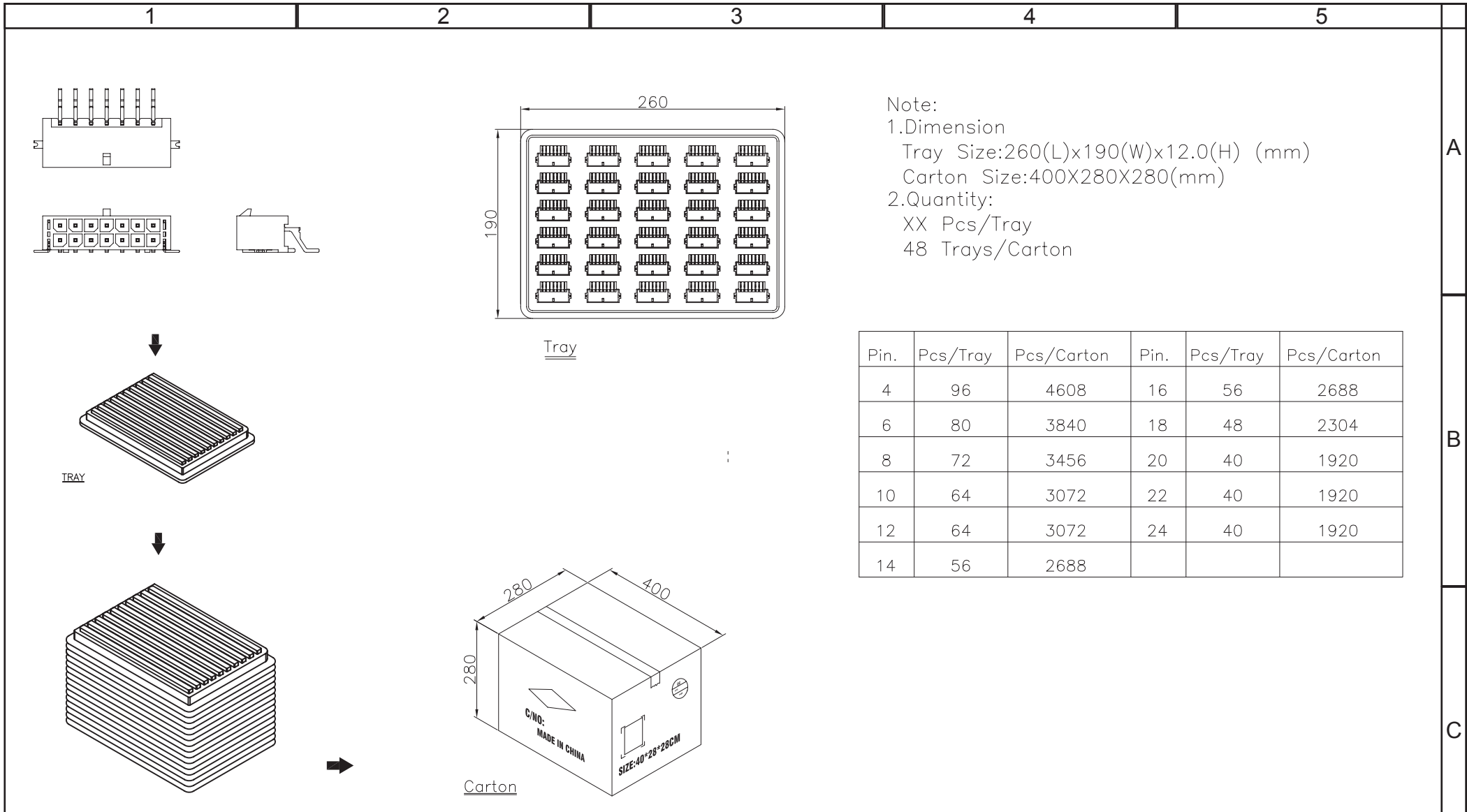
STANDARD
 CERTIFIED: E323964 / MODEL NUMBER 662-R

SOLDERING
 REFLOW PROCESS ONLY

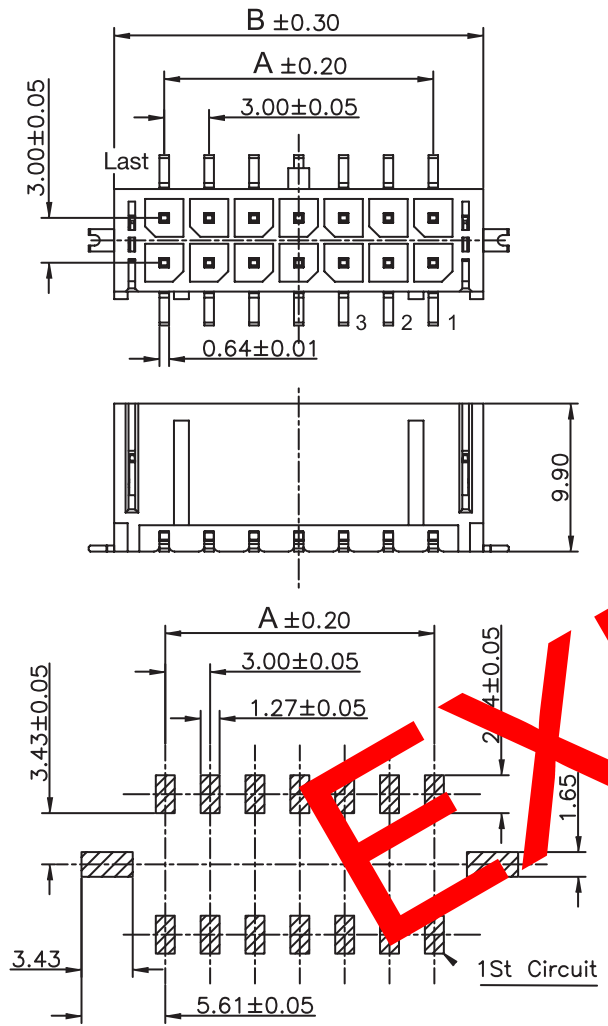
PACKAGING
 TRAY

DIMENSION
 A = 3.00 x (NB. PIN / 2 - 1)
 B = 3.00 x (NB. PIN / 2 + 1) + 0.70

RoHS Compliant				PROJECTION: 	GENERAL TOLERANCE .X = +/- 0.2 .XX = +/- 0.15		DESCRIPTION: 3.00MM MALE DUAL ROW SMT RIGHT ANGLE HEADER SMT SOLDER TAB	SIZE A4
G	29-JUL-13	DWG & CARAC	QL					
F	06-JUL-12	PLASTIC	GG					
E	22-FEB-12	DESCRIPTION	GG					
D	18-NOV-09	STANDARD	JP					
C	27-JUL-09	REAR PIN	JP	APPROVAL: RJ	UNIT: MM	DESCRIPTION: 3.00MM MALE DUAL ROW SMT RIGHT ANGLE HEADER SMT SOLDER TAB		SIZE A4
B	23-AVR-09	PACKAGING	JC		SCALE:	WERI PART NO: 662 0xx 231 722		
A	25-FEB-05	PDF DRAW	JP		SHEET: 1/2			
REV	DATE	FILE	BY		DRAW: PEARL			



RoHS Compliant				PROJECTION:	GENERAL TOLERANCE		DESCRIPTION: 3.00MM MALE DUAL ROW SMT RIGHT ANGLE HEADER SMT SOLDER TAB	SIZE A4
G					.X = +/- 0.2			
F					.XX = +/- 0.15			
E				APPROVAL: RJ	UNIT: MM	WERI PART NO: 6620 xx 231722_TPK		
D					SCALE:			
C					SHEET: 2/2			
B					DRAW: PEARL			
A								
REV	DATE	FILE	BY					



PCB LAYOUT - COMPONENT VIEW

TECHNICAL CHARACTERISTICS

MATERIAL
 INSULATOR: NYLON 9T
 FLAMABILITY RATING: UL94-V0
 COLOR: BLACK
 CONTACT MATERIAL: COPPER ALLOY
 CONTACT TYPE: STAMPED
 CONTACT PLATING: TIN
 CONTACT CLASS: 25 MATING CYCLES
 PITCH: 3.00MM

ENVIRONMENTAL
 OPERATING TEMPERATURE: -25 UP TO 105°C
 COMPLIANCE: LEAD FREE AND ROHS

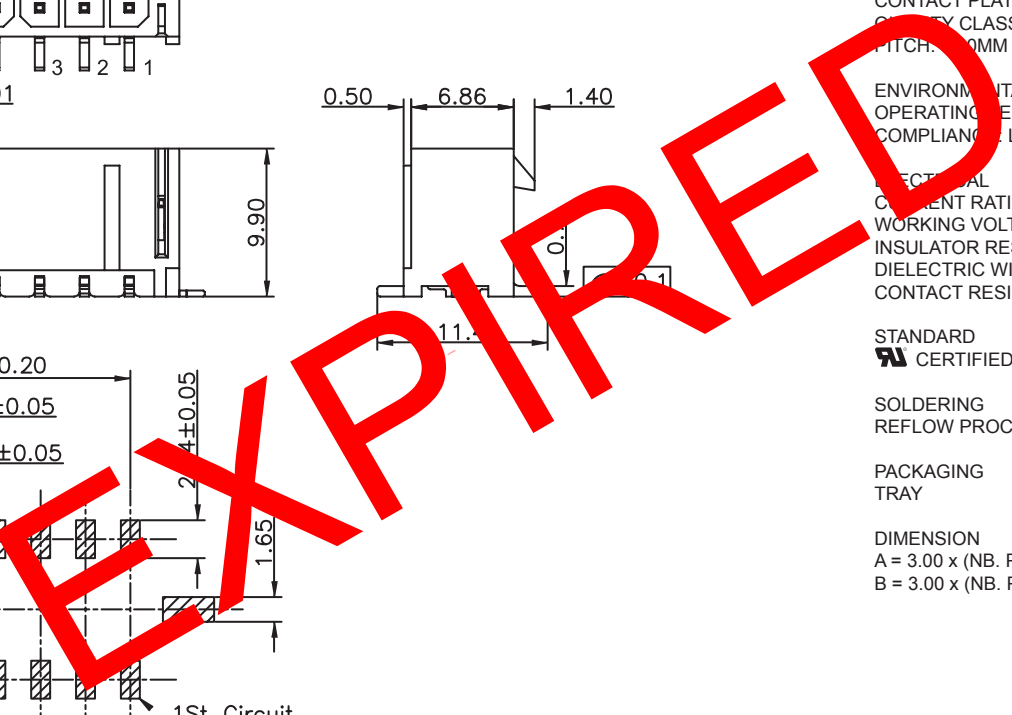
ELECTRICAL
 CURRENT RATING: 5A
 WORKING VOLTAGE: 250V AC
 INSULATOR RESISTANCE: >1000 MOHM
 DIELECTRIC WITHSTANDING VOLTAGE: 1500V AC/MN
 CONTACT RESISTANCE: 10 mOHM MAX

STANDARD
 CERTIFIED: E323964 / MODEL NUMBER 662-S

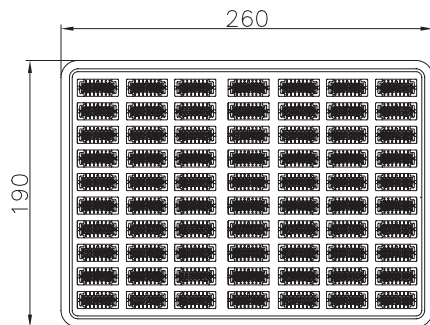
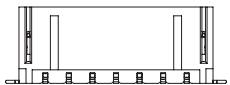
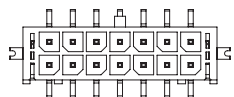
SOLDERING
 REFLOW PROCESS ONLY

PACKAGING
 TRAY

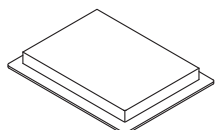
DIMENSION
 A = 3.00 x (NB. PIN / 2 - 1)
 B = 3.00 x (NB. PIN / 2 + 1) + 0.70



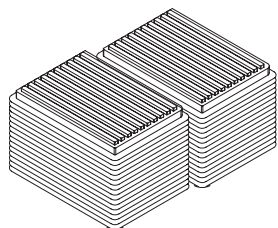
RoHS Compliant				PROJECTION: 	GENERAL TOLERANCE .X = +/- 0.2 .XX = +/- 0.15	 WÜRTH ELEKTRONIK	DESCRIPTION: 3.00MM MALE DUAL ROW SMT VERTICAL HEADER WITH SMT SOLDER TAB WERI PART NO: 662 0xx 231 822	SIZE A4
K	21-JAN-13	DIM A & B MOD	QL					
J	06-JUL-12	PLASTIC	GG	APPROVAL: RJ	UNIT: MM			
I	22-FEB-12	DESCRIPTION	GG		SCALE:			
H	29-AUG-11	PACKAGING	JP		SHEET: 1/2			
REV	DATE	FILE	BY		DRAW: PEARL			



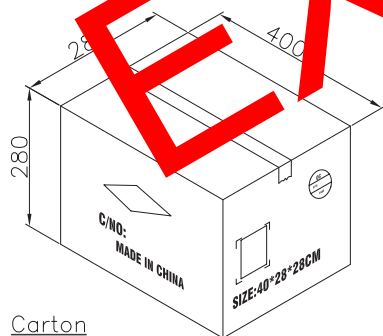
Tray



TRAY



48 Trays



Carton

Note:

1.Dimension

Tray Size:260(L)x190(W)x12.0(H) (mm)

Carton Size:400X280X280(mm)

2.Quantity:

XX Pcs/Tray

48 Tray / Carton

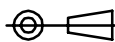
Pin	Pcs/Tray	Tray/Carton	Pcs/Carton
2	140	44	6160
4	120	44	5280
6	100	44	4400
8	90	44	3960
10	80	44	3520
12	70	44	3080
14	70	44	3080
16	60	44	2640
18	60	44	2640
20	50	44	2200
22	50	44	2200
24	40	44	1760

EXPIRED

RoHS Compliant

G			
F			
E			
D			
C			
B			
A			
REV	DATE	FILE	BY

PROJECTION:



APPROVAL: RJ

GENERAL TOLERANCE

.X = +/- 0.2

.XX = +/- 0.15

UNIT: MM

SCALE:

SHEET: 2/2

DRAW: PEARL

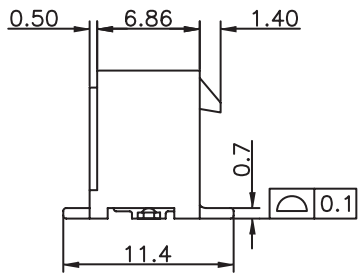
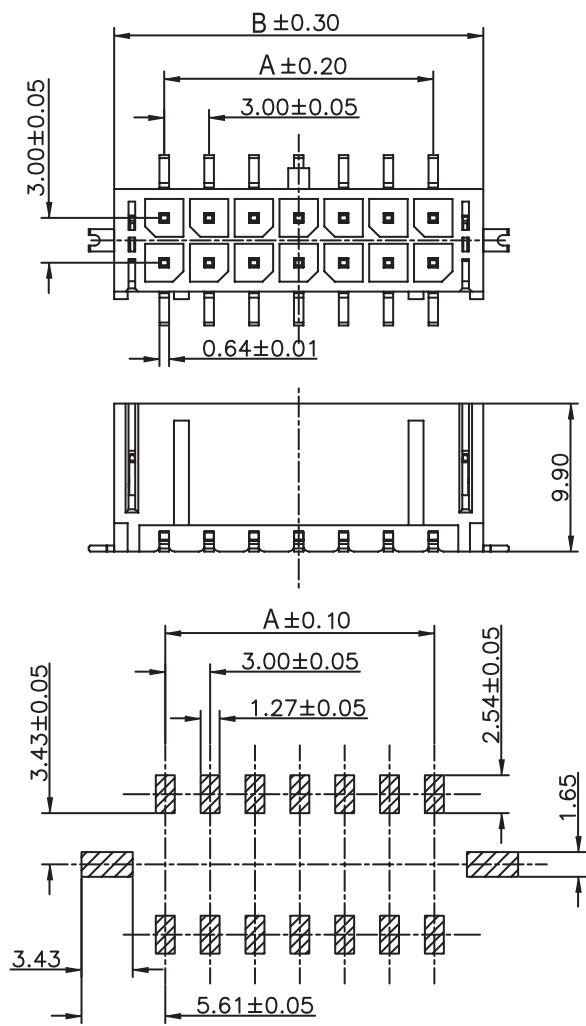


DESCRIPTION: 3.00MM MALE DUAL ROW SMT VERTICAL HEADER WITH SMT SOLDER TAB

WERI PART NO 6620 xx 231822_TPK

SIZE

A4



TECHNICAL CHARACTERISTICS

MATERIAL
 INSULATOR: LCP
 FLAMABILITY RATING: UL94-V0
 COLOR: BLACK
 CONTACT MATERIAL: COPPER ALLOY
 CONTACT TYPE: STAMPED
 CONTACT PLATING: TIN
 QUALITY CLASS: 25 MATING CYCLES
 PITCH: 3.00MM

ENVIRONMENTAL
 OPERATING TEMPERATURE: -40 UP TO 105°C
 COMPLIANCE: LEAD FREE AND ROHS

ELECTRICAL
 CURRENT RATING: 5A
 WORKING VOLTAGE: 250V AC
 INSULATOR RESISTANCE: >1000 MOHM
 DIELECTRIC WITHSTANDING VOLTAGE: 1500V AC/MN
 CONTACT RESISTANCE: 10 mOHM MAX

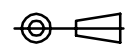

STANDARD
 CERTIFIED: E323964 / MODEL NUMBER 662-S

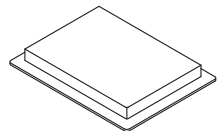
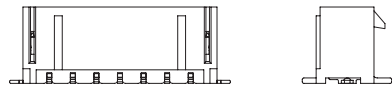
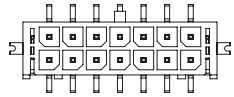
SOLDERING
 REFLOW PROCESS ONLY

PACKAGING
 TRAY

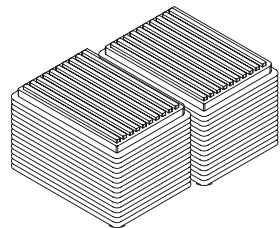
DIMENSION
 A = 3.00 x (NB. PIN / 2 - 1)
 B = 3.00 x (NB. PIN / 2 + 1) + 0.70

PCB LAYOUT - COMPONENT VIEW

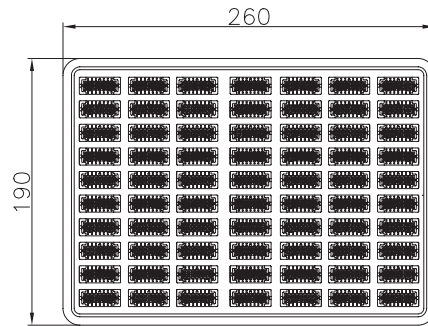
RoHS Compliant				PROJECTION: 	GENERAL TOLERANCE .X = +/- 0.2 .XX = +/- 0.15		DESCRIPTION: 3.00MM MALE DUAL ROW SMT VERTICAL HEADER WITH SMT SOLDER TAB	SIZE A4
L	29-JUL-13	DWG & CARAC	QL					
K	21-JAN-13	DIM A & B MOD	QL					
J	06-JUL-12	PLASTIC	GG					
I	22-FEB-12	DESCRIPTION	GG					
H	29-AUG-11	PACKAGING	JP					
REV	DATE	FILE	BY	APPROVAL: RJ	UNIT: MM SCALE: SHEET: 1/2 DRAW: PEARL	WERI PART NO: 662 0xx 231 822		



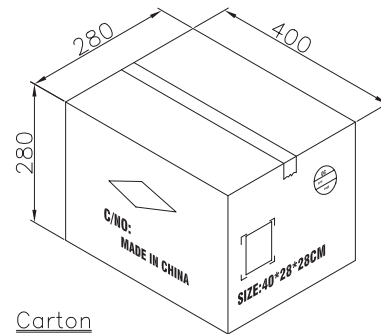
TRAY



48 Trays



Tray



Carton

Note:

1.Dimension

Tray Size:260(L)x190(W)x12.0(H) (mm)

Carton Size:400X280X280(mm)

2.Quantity:

XX Pcs/Tray

48 Trays/Carton

Pin.	Pcs/Tray	Tray/Carton	Pcs/Carton
2	140	44	6160
4	120	44	5280
6	100	44	4400
8	90	44	3960
10	80	44	3520
12	70	44	3080
14	70	44	3080
16	60	44	2640
18	60	44	2640
20	50	44	2200
22	50	44	2200
24	40	44	1760

RoHS Compliant

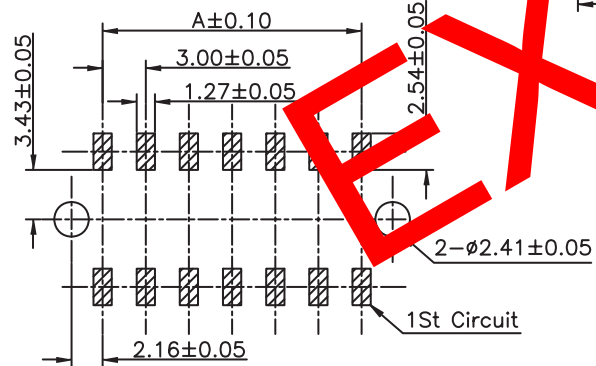
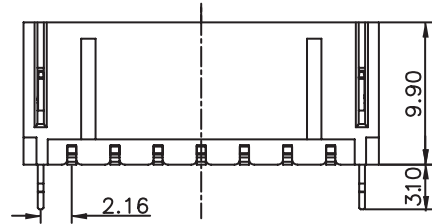
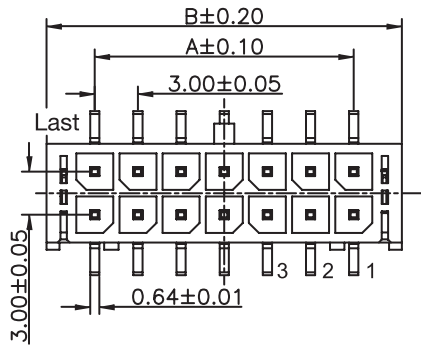
G			
F			
E			
D			
C			
B			
A			
REV	DATE	FILE	BY

PROJECTION:	
APPROVAL: RJ	

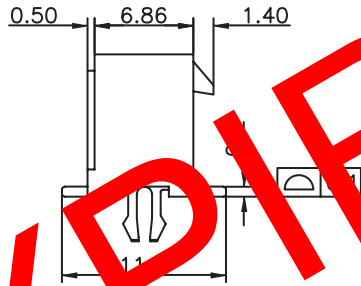
GENERAL TOLERANCE
.X = +/- 0.2
.XX = +/- 0.15
UNIT: MM
SCALE:
SHEET: 2/2
DRAW: PEARL

	DESCRIPTION: 3.00MM MALE DUAL ROW SMT VERTICAL HEADER WITH SMT SOLDER TAB
	WERI PART NO 6620 xx 231822_TPK

SIZE
A4



PCB LAYOUT - COMPONENT VIEW



TECHNICAL CHARACTERISTICS

MATERIAL
 INSULATOR: NYLON 9T
 FLAMABILITY RATING: UL94-V0
 COLOR: BLACK
 CONTACT MATERIAL: COPPER ALLOY
 CONTACT TYPE: STAMPED
 CONTACT FINISHING: TIN
 QUALITY CLASS: S: 25 MATING CYCLES
 PITCH: 3.00MM

ENVIRONMENT
 OPERATING TEMPERATURE: -25 UP TO 105°C
 COMPLIANCE: LEAD FREE AND ROHS

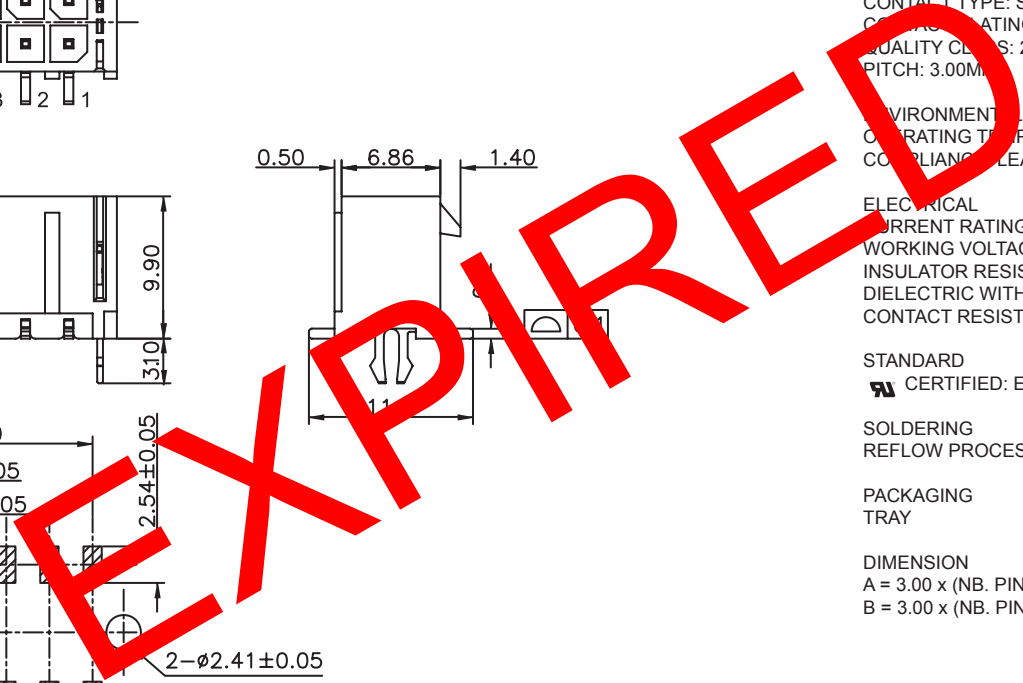
ELECTRICAL
 CURRENT RATING: 5A
 WORKING VOLTAGE: 250V AC
 INSULATOR RESISTANCE: >1000 MOHM
 DIELECTRIC WITHSTANDING VOLTAGE: 1500V AC/MN
 CONTACT RESISTANCE: 10 mOHM MAX

STANDARD
 CERTIFIED: E323964 / MODEL NUMBER 662-S

SOLDERING
 REFLOW PROCESS ONLY

PACKAGING
 TRAY

DIMENSION
 A = 3.00 x (NB. PIN / 2 - 1)
 B = 3.00 x (NB. PIN / 2 + 1) + 0.70



RoHS Compliant			
G			
F	06-JUL-12	PLASTIC	GG
E	18-NOV-09	STANDARD	JP
D	17-NOV-08	PINNING	JP
C	04-DEC-07	MODIFICATIONS	EC
B	23-FEB-07	PDF	EC
A	06-OCT-04	ROHS	JACK
REV	DATE	FILE	BY

PROJECTION:	
APPROVAL: RJ	

GENERAL TOLERANCE
.X = +/- 0.2
.XX = +/- 0.15
UNIT: MM
SCALE:
SHEET: 1/1
DRAW: JACK

 WÜRTH ELEKTRONIK
DESCRIPTION: 3.00MM MALE DUAL ROW SMT VERTICAL HEADER WITH TH METAL CLIP
WERI PART NO: 662 0xx 235 922

SIZE
A4

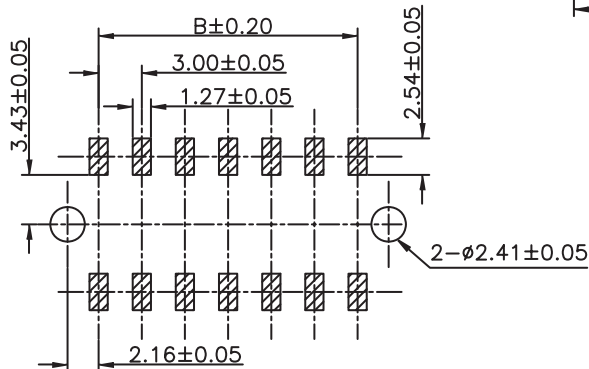
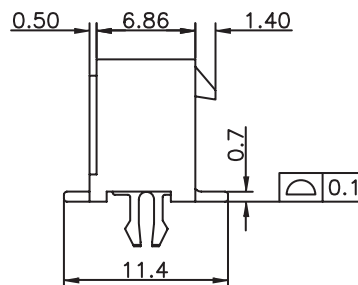
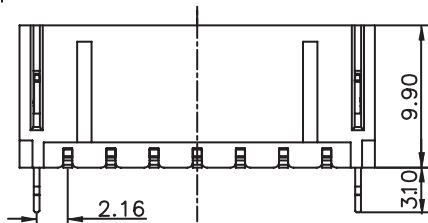
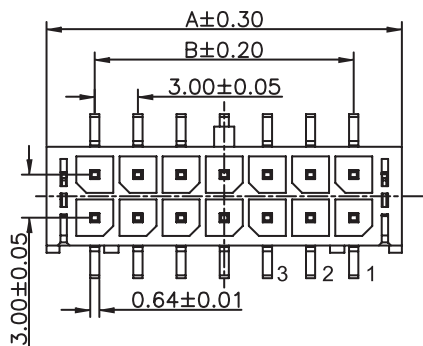
1

2

3

4

5




PCB LAYOUT - COMPONENT VIEW

TECHNICAL CHARACTERISTICS

MATERIAL
 INSULATOR: LCP
 FLAMABILITY RATING: UL94-V0
 COLOR: BLACK
 CONTACT MATERIAL: COPPER ALLOY
 CONTACT TYPE: STAMPED
 CONTACT PLATING: TIN
 QUALITY CLASS: 25 MATING CYCLES
 PITCH: 3.00MM

ENVIRONMENTAL
 OPERATING TEMPERATURE: -40 UP TO 105°C
 COMPLIANCE: LEAD FREE AND ROHS

ELECTRICAL
 CURRENT RATING: 5A
 WORKING VOLTAGE: 250V AC
 INSULATOR RESISTANCE: >1000 MOHM
 DIELECTRIC WITHSTANDING VOLTAGE: 1500V AC/MN
 CONTACT RESISTANCE: 10 mOHM MAX

STANDARD
 CERTIFIED: E323964 / MODEL NUMBER 662-S

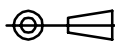
SOLDERING
 REFLOW PROCESS ONLY

PACKAGING
 TUBE

DIMENSION
 A = 3.00 x (NB. PIN / 2 - 1)
 B = 3.00 x (NB. PIN / 2 + 1) + 0.70

RoHS Compliant

PROJECTION:



GENERAL TOLERANCE

.X = +/- 0.2

.XX = +/- 0.15



APPROVAL: RJ

UNIT: MM

SCALE:

SHEET: 1/1

DRAW: JACK

DESCRIPTION: 3.00MM MALE DUAL ROW SMT VERTICAL HEADER WITH TH METAL CLIP

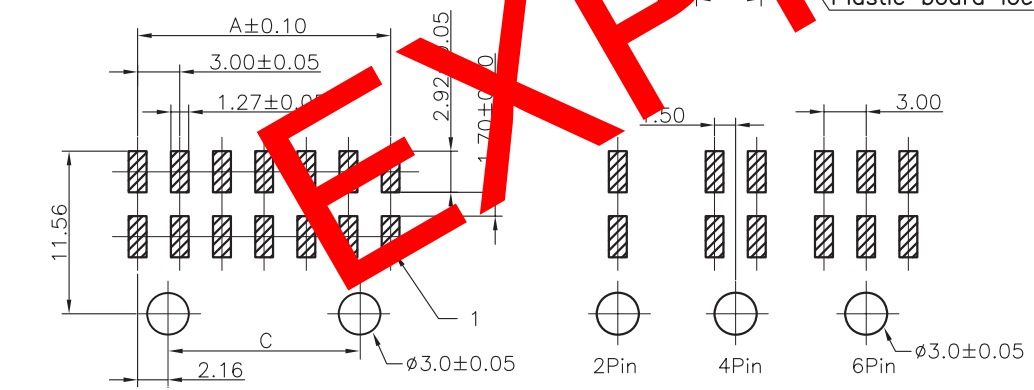
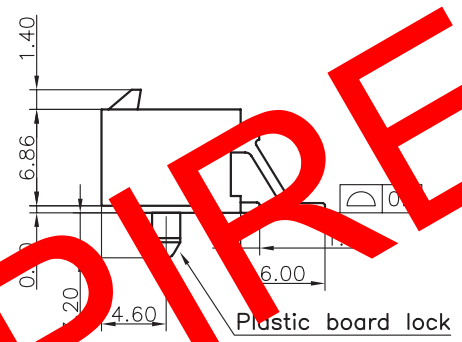
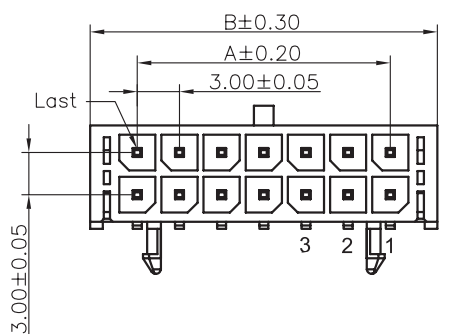
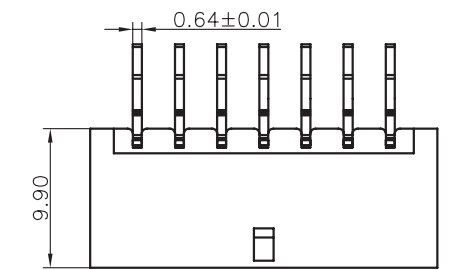
WERI PART NO: 662 0xx 235 922

SIZE

A4

REV	DATE	FILE	BY
H	30-JUL-13	PACKAGING	QL

1 2 3 4 5



PCB LAYOUT - COMPONENT VIEW

TECHNICAL CHARACTERISTICS

MATERIAL
 INSULATOR: NYLON 9T
 FLAMABILITY RATING: UL94-V0
 COLOR: BLACK
 CONTACT MATERIAL: COPPER ALLOY
 CONTACT TYPE: STAMPED
 CONTACT PLATING: TIN
 QUALITY CLASS: 25 MATING CYCLES
 PITCH: 3.00MM

ENVIRONMENTAL
 OPERATING TEMPERATURE: -25 UP TO 105°C
 COMPLIANCE: LEAD FREE AND ROHS

ELECTRICAL
 CURRENT RATING: 5A
 WORKING VOLTAGE: 250V AC
 INSULATOR RESISTANCE: >1000 MOHM
 DIELECTRIC WITHSTANDING VOLTAGE: 1500V AC/MN
 CONTACT RESISTANCE: 10 mOHM MAX

STANDARD
 CERTIFIED: E323964 / MODEL NUMBER 662-R

SOLDERING
 REFLOW PROCESS ONLY

PACKAGING
 TRAY

DIMENSION
 A = 3.00 x (NB. PIN / 2 - 1)
 B = 3.00 x (NB. PIN / 2 + 1) + 0.70

NB. PIN	C	NB. PIN	C
2 to 6	-	16	16.68
8	4.68	18	19.68
10	7.68	20	22.68
12	10.68	22	25.68
14	13.68	24	28.68

RoHS Compliant			
G	06-JUL-12	PLASTIC	GG
F	20-DEC-11	LAYOUT	GG
E	05-AUG-11	C DIMENSION	QL
D	10-OCT-10	DIAMETER	GG
C	18-NOV-09	STANDARD	JP
B	03-AUG-09	DIMENSION C	JP
A	27-JUL-09	REAR PIN	JP
REV	DATE	FILE	BY

PROJECTION:

APPROVAL: RJ

GENERAL TOLERANCE
 .X = +/- 0.2
 .XX = +/- 0.15

UNIT: MM
 SCALE:
 SHEET: 1/1
 DRAW: JACK

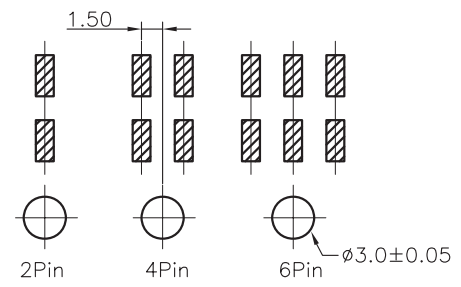
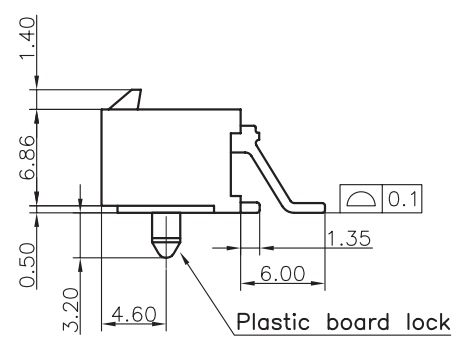
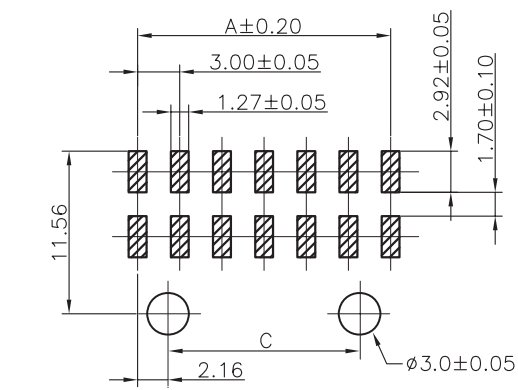
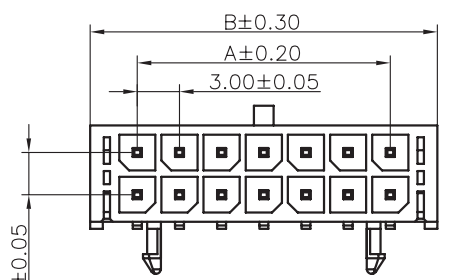
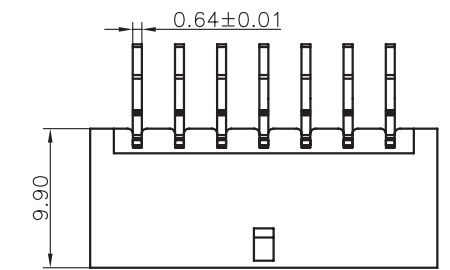


DESCRIPTION: 3.00MM MALE DUAL ROW SMT RIGHT ANGLE HEADER WITH PLASTIC PEGS

WERI PART NO: 662 0xx 236 022

SIZE
A4

EXPIRED



PCB LAYOUT - COMPONENT VIEW

TECHNICAL CHARACTERISTICS

MATERIAL
INSULATOR: LCP
FLAMABILITY RATING: UL94-V0
COLOR: BLACK
CONTACT MATERIAL: COPPER ALLOY
CONTACT TYPE: STAMPED
CONTACT PLATING: TIN
QUALITY CLASS: 25 MATING CYCLES
PITCH: 3.00MM

ENVIRONMENTAL
OPERATING TEMPERATURE: -40 UP TO 105°C
COMPLIANCE: LEAD FREE AND ROHS

ELECTRICAL
CURRENT RATING: 5A
WORKING VOLTAGE: 250V AC
INSULATOR RESISTANCE: >1000 MOHM
DIELECTRIC WITHSTANDING VOLTAGE: 1500V AC/MN
CONTACT RESISTANCE: 10 mOHM MAX

STANDARD
CERTIFIED: E323964 / MODEL NUMBER 662-R

SOLDERING
REFLOW PROCESS ONLY

PACKAGING
TRAY

DIMENSION
A = 3.00 x (NB. PIN / 2 - 1)
B = 3.00 x (NB. PIN / 2 + 1) + 0.70

NB. PIN	C	NB. PIN	C
2 to 6	-	16	16.68
8	4.68	18	19.68
10	7.68	20	22.68
12	10.68	22	25.68
14	13.68	24	28.68

RoHS Compliant			
H	29-JUL-13	DWG & CARAC	QL
REV	DATE	FILE	BY

PROJECTION:
APPROVAL: RJ

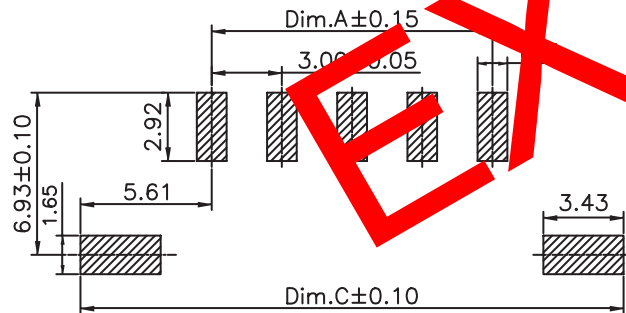
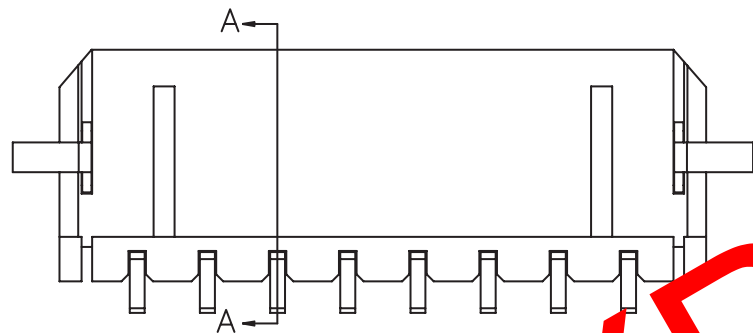
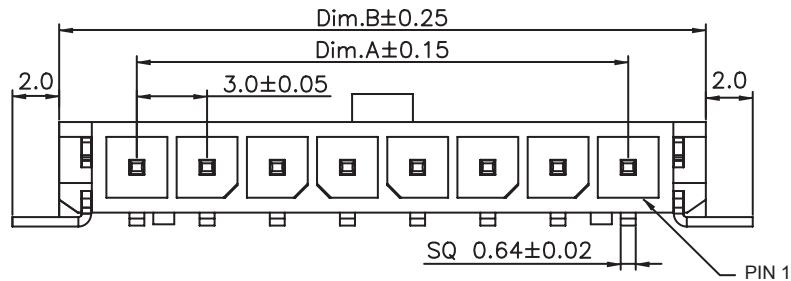
GENERAL TOLERANCE
.X = +/- 0.2
.XX = +/- 0.15
UNIT: MM
SCALE:
SHEET: 1/1
DRAW: JACK

DESCRIPTION: 3.00MM MALE DUAL ROW SMT RIGHT ANGLE HEADER WITH PLASTIC PEGS
WERI PART NO: 662 0xx 236 022

SIZE
A4

A
B
C

D



PCB LAYOUT - COMPONENT VIEW

TECHNICAL CHARACTERISTICS

MATERIAL
 INSULATOR: NYLON 9T
 FLAMABILITY RATING: UL94-V0
 COLOR: BLACK
 CONTACT MATERIAL: COPPER ALLOY
 CONTACT TYPE: STAMPED
 CONTACT PLATING: TIN
 QUALITY CLASS: 25 MATING CYCLES
 PITCH: 3.00MM

ENVIRONMENTAL
 OPERATING TEMPERATURE: -25 UP TO 105°C
 COMPLIANCE: LEAD FREE AND ROHS

ELECTRICAL
 CURRENT RATING: 5A
 WORKING VOLTAGE: 250V AC
 INSULATOR RESISTANCE: >1000 MOHM
 DIELECTRIC WITHSTANDING VOLTAGE: 1500V AC/MN
 CONTACT RESISTANCE: 10 mOHM MAX

STANDARD
 CERTIFIED: E323964 / MODEL NUMBER 662-R

SOLDERING
 JEDEC LEAD FREE REFLOW PROCESS

PACKAGING
 TAPE & REEL

DIMENSION
 A = 3.00 x (NB. PIN - 1)
 B = 3.00 x (NB. PIN) + 3.65
 C = 3.00 x (NB. PIN) + 8.20

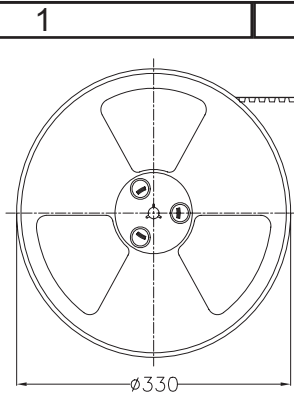
RoHS Compliant

G				PROJECTION:
F	06-JUL-12	PLASTIC	GG	
E	22-FEB-12	DESCRIPTION	GG	
D	17-NOV-10	PINNING	GG	
C	18-NOV-09	STANDARD	JP	
B	23-AVR-09	PACKAGING	JC	APPROVAL: RJ
A	05-MAR-09	PDF	JP	
REV	DATE	FILE	BY	

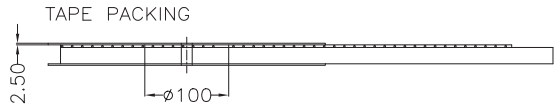
GENERAL TOLERANCE .X = +/- 0.2 .XX = +/- 0.15
UNIT: MM
SCALE:
SHEET: 1/2
DRAW: MIKE



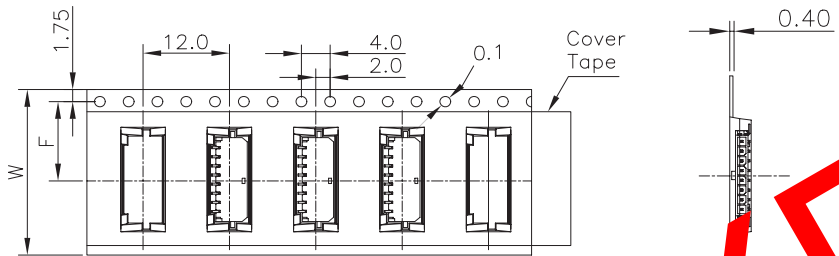
DESCRIPTION: 3.00MM SMD MALE SINGLE ROW ANGLED HEADER SMT SOLDER TAB	SIZE A4
WERI PART NO: 662 1xx 145 021	



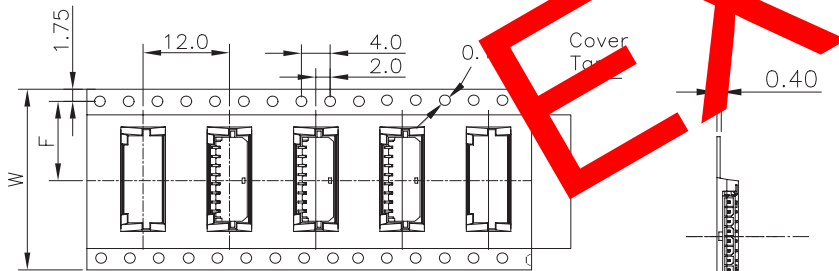
PULL OUT DIRECTION



- Note:
- 1.All dimensions meet EIA-481-3 requirements.
 - 2.Material : BK Conductive Polystyrene Alloy
100% recyclable.
 - 3.Thickness : 0.50±0.05mm
 - 4.Component load per 13" reel :400 pcs.
 - 5.Carton Size:350*350*296(mm)
 - 6.Need Vacuum Pack

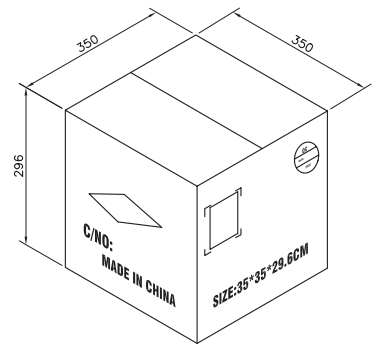


For Reel width (dimension W)16,24mm
Single row hole



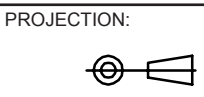
For Reel width (dimension W)32,44,56,72mm
Double rows hole

Pin	W	F	Pcs/R	R/Carton	Pcs/Carton
2	16	11.5	400	8	3200
3	24	14.2	400	6	2400
4	32	17.2	400	6	2400
5	44	20.2	400	5	2000
6	44	20.2	400	5	2000
7	44	20.2	400	5	2000
8	44	20.2	400	5	2000
9	56	26.2	400	3	1200
10	56	26.2	400	3	1200
11	56	26.2	400	3	1200
12	56	26.2	400	3	1200



EXPIRED

RoHS Compliant			
G			
F			
E			
D			
C			
B			
A			
REV	DATE	FILE	BY



GENERAL TOLERANCE
.X = +/- 0.2
.XX = +/- 0.15

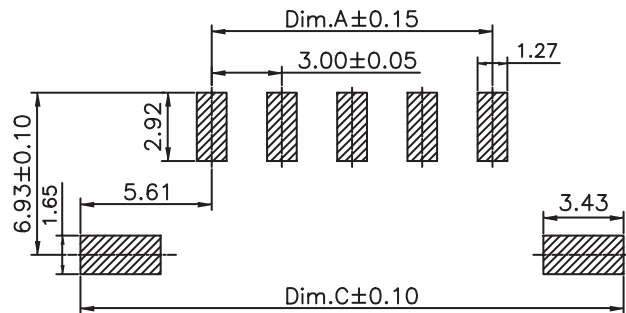
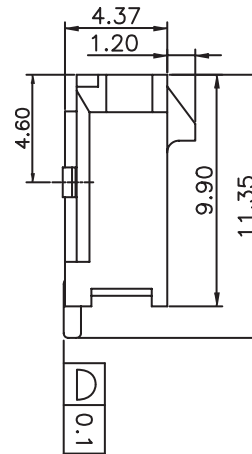
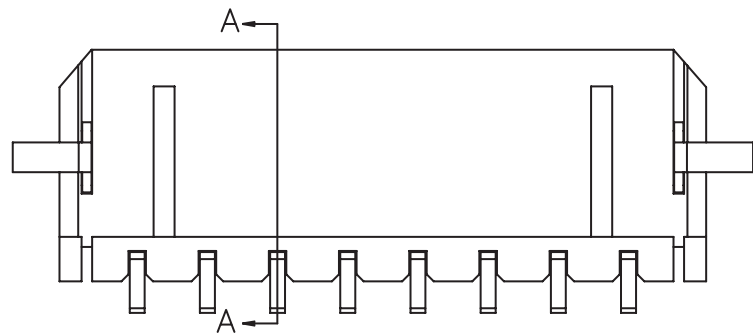
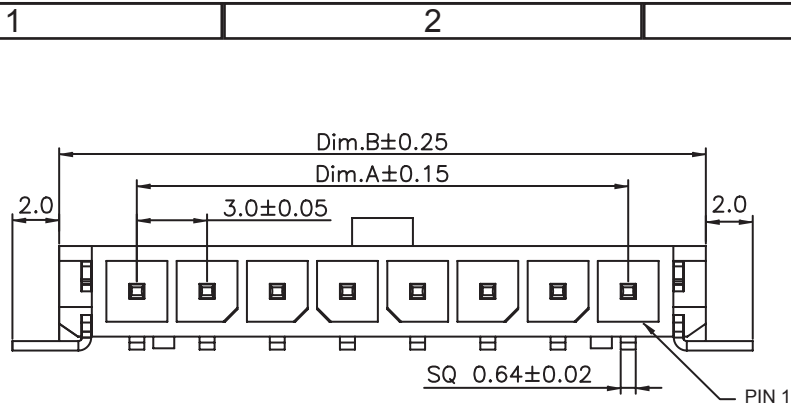


APPROVAL: RJ

UNIT: MM
SCALE:
SHEET: 2/2
DRAW: PEARL

DESCRIPTION: 3.00MM SMD MALE SINGLE ROW ANGLED HEADER - SMT SOLDER TAB
WERI PART NO: 6621 xx 145021_TPK

SIZE
A4



PCB LAYOUT - COMPONENT VIEW

TECHNICAL CHARACTERISTICS

MATERIAL
 INSULATOR: LCP
 FLAMABILITY RATING: UL94-V0
 COLOR: BLACK
 CONTACT MATERIAL: COPPER ALLOY
 CONTACT TYPE: STAMPED
 CONTACT PLATING: TIN
 QUALITY CLASS: 25 MATING CYCLES
 PITCH: 3.00MM

ENVIRONMENTAL
 OPERATING TEMPERATURE: -40 UP TO 105°C
 COMPLIANCE: LEAD FREE AND ROHS

ELECTRICAL
 CURRENT RATING: 5A
 WORKING VOLTAGE: 250V AC
 INSULATOR RESISTANCE: >1000 MOHM
 DIELECTRIC WITHSTANDING VOLTAGE: 1500V AC/MN
 CONTACT RESISTANCE: 10 mOHM MAX

STANDARD
 CERTIFIED: E323964 / MODEL NUMBER 662-R

SOLDERING
 JEDEC LEAD FREE REFLOW PROCESS

PACKAGING
 TAPE & REEL

DIMENSION
 A = 3.00 x (NB. PIN - 1)
 B = 3.00 x (NB. PIN) + 3.65
 C = 3.00 x (NB. PIN) + 8.20

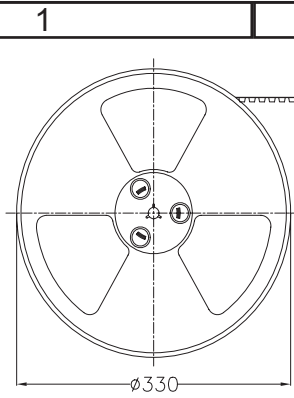
RoHS Compliant			
G	29-JUL-13	DWG & CARAC	QL
F	06-JUL-12	PLASTIC	GG
E	22-FEB-12	DESCRIPTION	GG
D	17-NOV-10	PINNING	GG
C	18-NOV-09	STANDARD	JP
B	23-AVR-09	PACKAGING	JC
A	05-MAR-09	PDF	JP
REV	DATE	FILE	BY

PROJECTION:	APPROVAL: RJ
UNIT: MM	
SCALE:	
SHEET: 1/2	

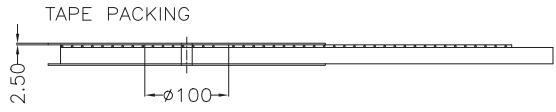
GENERAL TOLERANCE
.X = +/- 0.2
.XX = +/- 0.15
DRAW: MIKE

 WÜRTH ELEKTRONIK	DESCRIPTION: 3.00MM SMD MALE SINGLE ROW ANGLED HEADER SMT
	SOLDER TAB
WERI PART NO: 662 1xx 145 021	

SIZE
A4

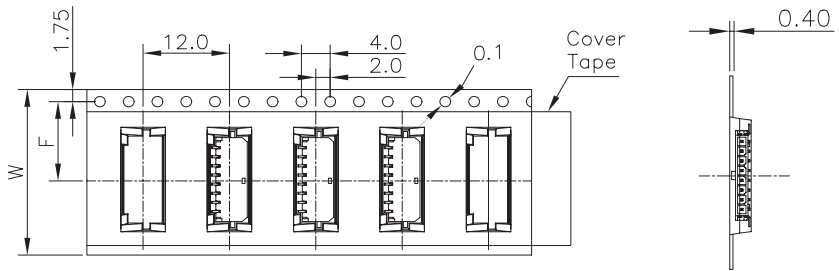


PULL OUT DIRECTION

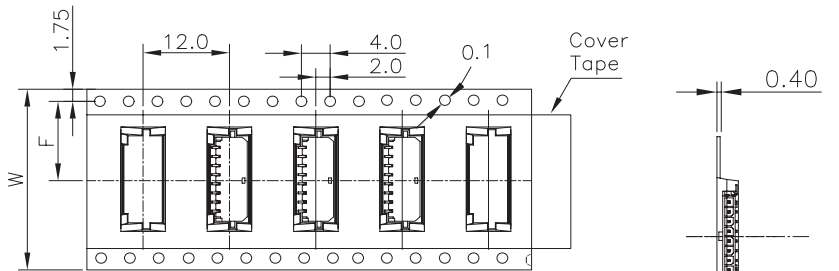


- Note:
- All dimensions meet EIA-481-3 requirements.
 - Material : BK Conductive Polystyrene Alloy
100% recyclable.
 - Thickness : 0.50±0.05mm
 - Component load per 13" reel :400 pcs.
 - Carton Size:350*350*296(mm)
 - Need Vacuum Pack

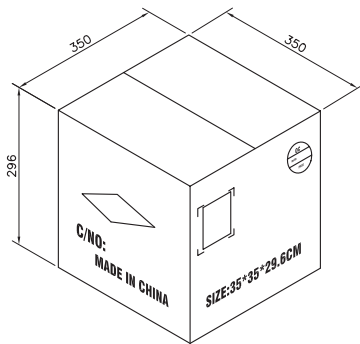
Pin.	W	F	Pcs/R	R/Carton	Pcs/Carton
2	24	11.5	400	8	3200
3	32	14.2	400	6	2400
4	32	14.2	400	6	2400
5	44	20.2	400	5	2000
6	44	20.2	400	5	2000
7	44	20.2	400	5	2000
8	44	20.2	400	5	2000
9	56	26.2	400	3	1200
10	56	26.2	400	3	1200
11	56	26.2	400	3	1200
12	56	26.2	400	3	1200



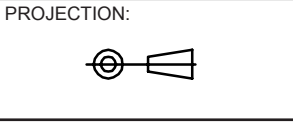
For Reel width (dimension W)16,24mm
Single row hole



For Reel width (dimension W)32,44,56,72mm
Double rows hole



RoHS Compliant			
G			
F			
E			
D			
C			
B			
A			
REV	DATE	FILE	BY



GENERAL TOLERANCE
.X = +/- 0.2
.XX = +/- 0.15

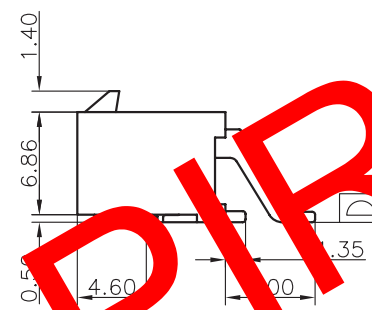
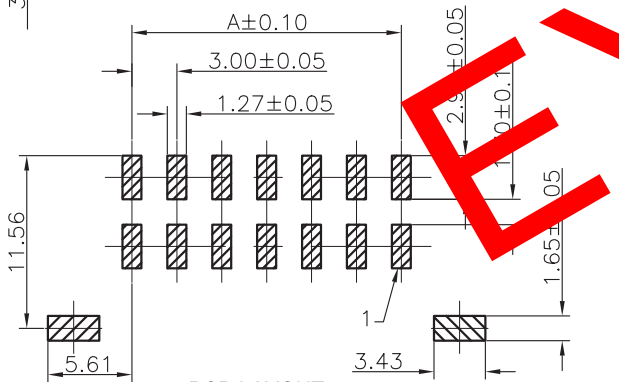
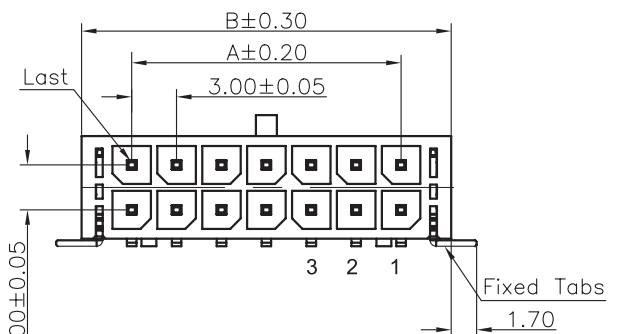
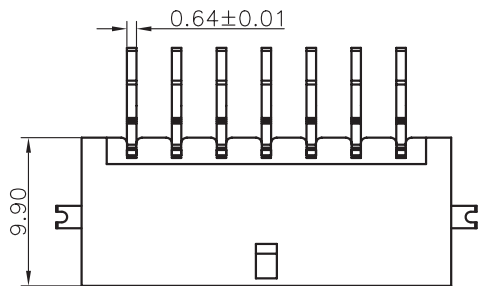
APPROVAL: RJ

UNIT: MM
SCALE:
SHEET: 2/2
DRAW: PEARL



DESCRIPTION: 3.00MM SMD MALE SINGLE ROW ANGLED HEADER - SMT SOLDER TAB
WERI PART NO: 6621 xx 145021_TPK

SIZE
A4



TECHNICAL CHARACTERISTICS

MATERIAL
 INSULATOR: NYLON 9T
 FLAMABILITY RATING: UL94-V0
 COLOR: BLACK
 CONTACT MATERIAL: COPPER ALLOY
 CONTACT TYPE: STAMPED
 CONTACT PLATING: TIN
 QUALITY CLASS: 25 MATING CYCLES
 PUSH: 3.00 N

ENVIRONMENTAL
 OPERATING TEMPERATURE: -25 UP TO 105°C
 COMPLIANCE: LEAD FREE AND ROHS

ELECTRICAL
 CURRENT RATING: 5A
 WORKING VOLTAGE: 250V AC
 INSULATOR RESISTANCE: >1000 MOHM
 DIELECTRIC WITHSTANDING VOLTAGE: 1500V AC/MN
 CONTACT RESISTANCE: 10 mOHM MAX

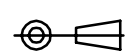

SOLDERING
 REFLOW PROCESS ONLY

PACKAGING
 TAPE AND REEL

DIMENSION
 A = 3.00 x (NB. PIN / 2 - 1)
 B = 3.00 x (NB. PIN / 2 + 1) + 0.70

EXPIRED

PCB LAYOUT
 COMPONENT VIEW

RoHS Compliant				PROJECTION: 	GENERAL TOLERANCE .X = +/- 0.2 .XX = +/- 0.15	
G						
F	06-JUL-12	PLASTIC	GG			
E	22-FEB-12	DESCRIPTION	GG			
D	28-OCT-09	COPLANARITY	JP	APPROVAL: RJ	UNIT: MM	DESCRIPTION: 3.00MM MALE DUAL ROW SMT RIGHT ANGLE HEADER SMT SOLDER TAB
C	27-JUL-09	REAR PIN	JP			
B	19-NOV-08	PINNING	JP			
A	25-FEB-05	PDF DRAW	JP			
REV	DATE	FILE	BY		DRAW: PEARL	WERI PART NO: 6621 xx 231722
						SIZE A4

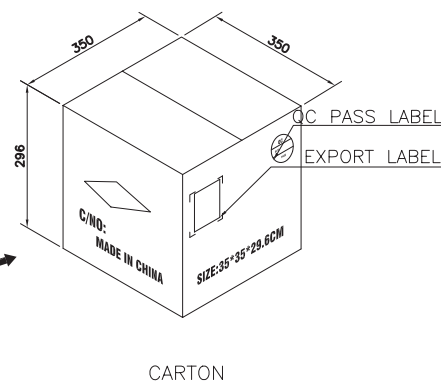
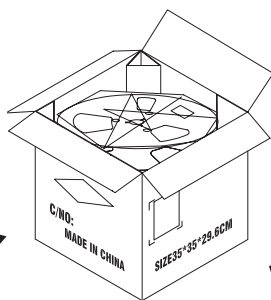
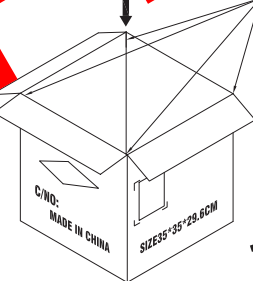
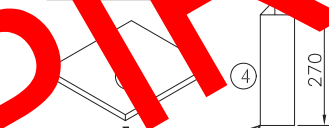
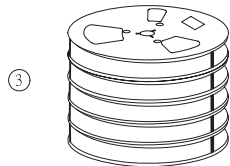
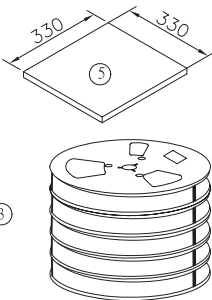
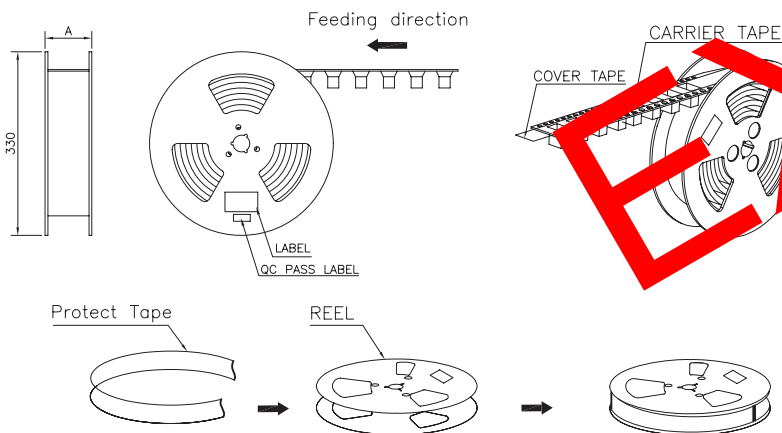
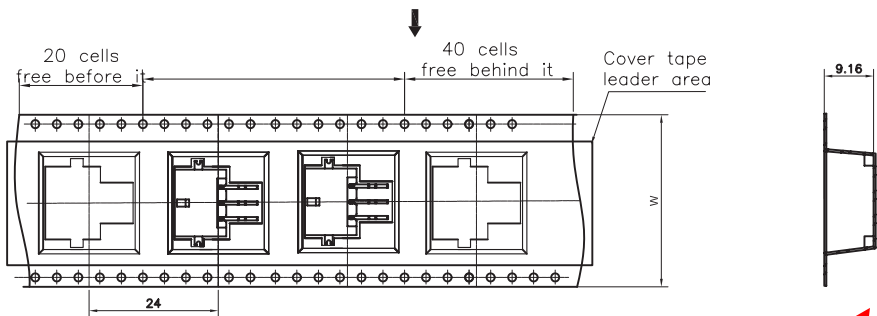
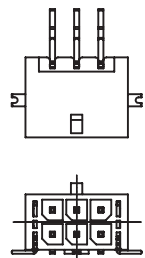
1

2

3

4

5

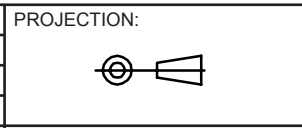


SPECIFICATIONS:
 1.DIMENSION
 REEL SIZE: 330*AMM)
 PE BAG SIZE: 0.8*710*720(MM)
 CARTON SIZE:350*350*296(MM)
 SET SPUAR SIZE:35*25.5*270(MM)
 NADIR COVER SIZE:330*330(MM)
 2.QUANTITY:
 200PCS/REEL

Pin No	A	PCS/R	R/CTN	Q'TY	
02-04	24	29	200	9	1800
05-07	32	37	200	7	1400
08-16	44	49	200	5	1000
18-24	56	61	200	4	800

EXPIRED

RoHS Compliant			
G			
F			
E			
D			
C			
B			
A			
REV	DATE	FILE	BY



APPROVAL: RJ

GENERAL TOLERANCE
 .X = +/- 0.2
 .XX = +/- 0.15

UNIT: MM
 SCALE:
 SHEET: 2/2
 DRAW: PEARL



DESCRIPTION: 3.00MM MALE DUAL ROW SMT RIGHT ANGLE HEADER
 SMT SOLDER TAB
 WERI PART NO: 6621 xx 231722

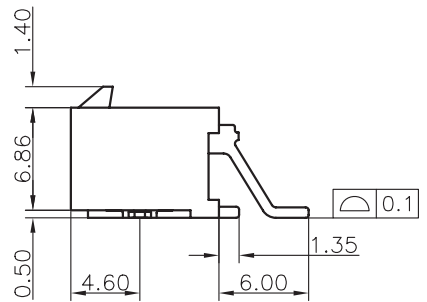
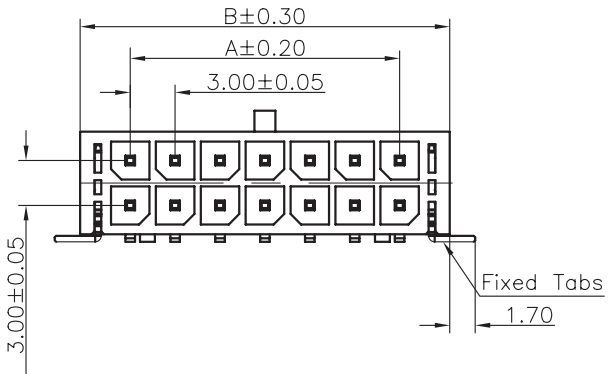
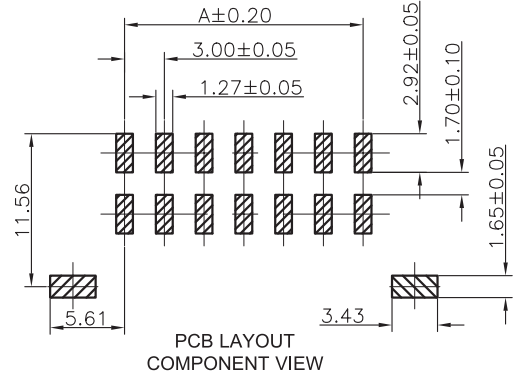
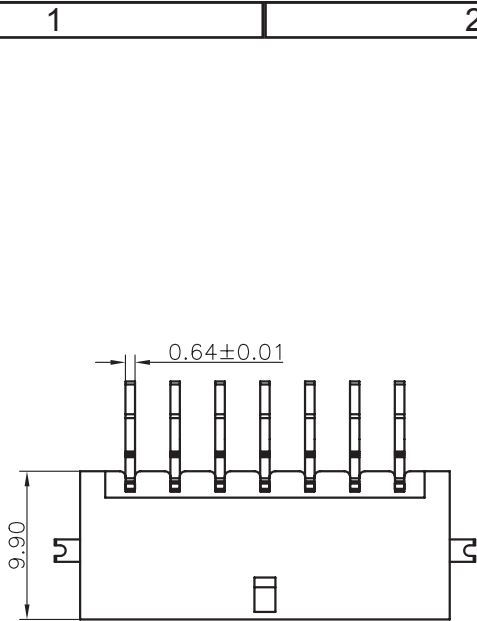
SIZE
A4

A

B

C

D



TECHNICAL CHARACTERISTICS

MATERIAL
 INSULATOR: LCP
 FLAMABILITY RATING: UL94-V0
 COLOR: BLACK
 CONTACT MATERIAL: COPPER ALLOY
 CONTACT TYPE: STAMPED
 CONTACT PLATING: TIN
 QUALITY CLASS: 25 MATING CYCLES
 PITCH: 3.00MM

ENVIRONMENTAL
 OPERATING TEMPERATURE: -40 UP TO 105°C
 COMPLIANCE: LEAD FREE AND ROHS

ELECTRICAL
 CURRENT RATING: 5A
 WORKING VOLTAGE: 250V AC
 INSULATOR RESISTANCE: >1000 MOHM
 DIELECTRIC WITHSTANDING VOLTAGE: 1500V AC/MN
 CONTACT RESISTANCE: 10 mOHM MAX

SOLDERING
 REFLOW PROCESS ONLY

PACKAGING
 TAPE AND REEL

DIMENSION
 A = 3.00 x (NB. PIN / 2 - 1)
 B = 3.00 x (NB. PIN / 2 + 1) + 0.70

RoHS Compliant			
G	29-JUL-13	DWG & CARAC	QL
F	06-JUL-12	PLASTIC	GG
E	22-FEB-12	DESCRIPTION	GG
D	28-OCT-09	COPLANARITY	JP
C	27-JUL-09	REAR PIN	JP
B	19-NOV-08	PINNING	JP
A	25-FEB-05	PDF DRAW	JP
REV	DATE	FILE	BY

PROJECTION:		GENERAL TOLERANCE
APPROVAL: RJ		.X = +/- 0.2 .XX = +/- 0.15
		UNIT: MM
		SCALE:
		SHEET: 1/2
		DRAW: PEARL

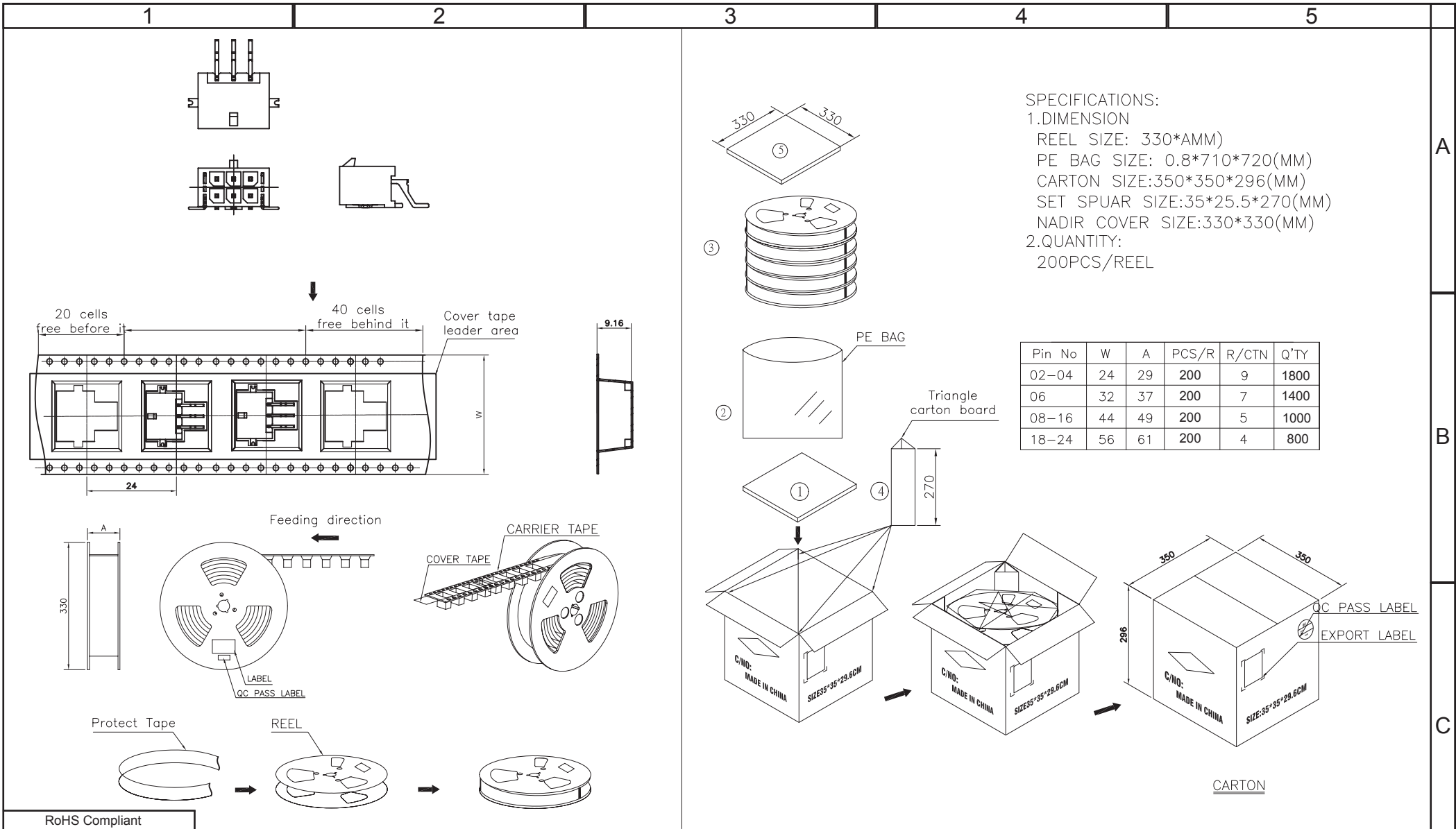
DESCRIPTION: 3.00MM MALE DUAL ROW SMT RIGHT ANGLE HEADER SMT SOLDER TAB	SIZE
WERI PART NO: 6621 xx 231722	A4

A

B

C

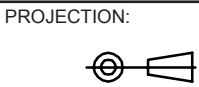
D



SPECIFICATIONS:
 1.DIMENSION
 REEL SIZE: 330*AMM
 PE BAG SIZE: 0.8*710*720(MM)
 CARTON SIZE:350*350*296(MM)
 SET SPUAR SIZE:35*25.5*270(MM)
 NADIR COVER SIZE:330*330(MM)
 2.QUANTITY:
 200PCS/REEL

Pin No	W	A	PCS/R	R/CTN	Q'TY
02-04	24	29	200	9	1800
06	32	37	200	7	1400
08-16	44	49	200	5	1000
18-24	56	61	200	4	800

RoHS Compliant			
G			
F			
E			
D			
C			
B			
A			
REV	DATE	FILE	BY



APPROVAL: RJ

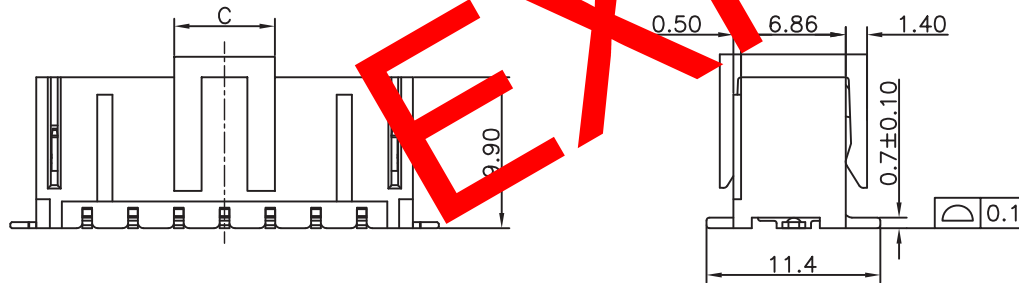
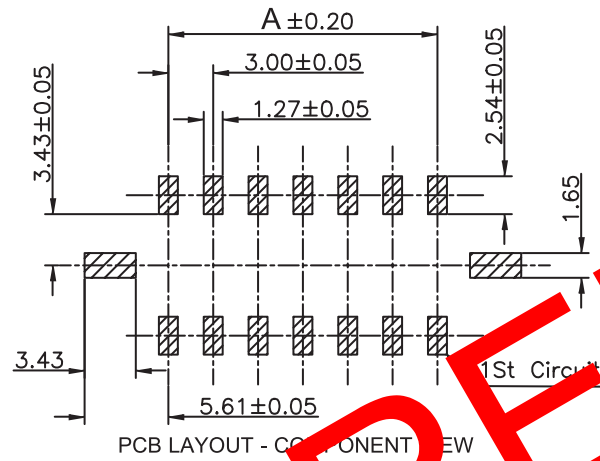
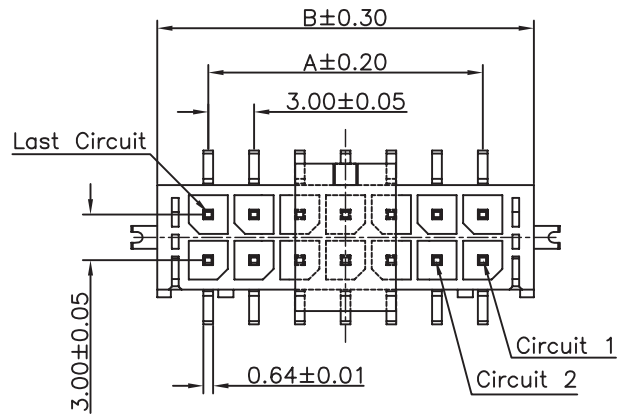
GENERAL TOLERANCE
 .X = +/- 0.2
 .XX = +/- 0.15

UNIT: MM
 SCALE:
 SHEET: 2/2
 DRAW: PEARL



DESCRIPTION: 3.00MM MALE DUAL ROW SMT RIGHT ANGLE HEADER
 SMT SOLDER TAB
 WERI PART NO: 6621 xx 231722

SIZE
A4



TECHNICAL CHARACTERISTICS

MATERIAL
 INSULATOR: NYLON 9T
 FLAMABILITY RATING: UL94-V0
 COLOR: BLACK
 CONTACT MATERIAL: COPPER ALLOY
 CONTACT TYPE: STAMPED
 CONTACT PLATING: TIN
 QUALITY CLASS: 25 MATING CYCLES
 PIN: 3.00MM

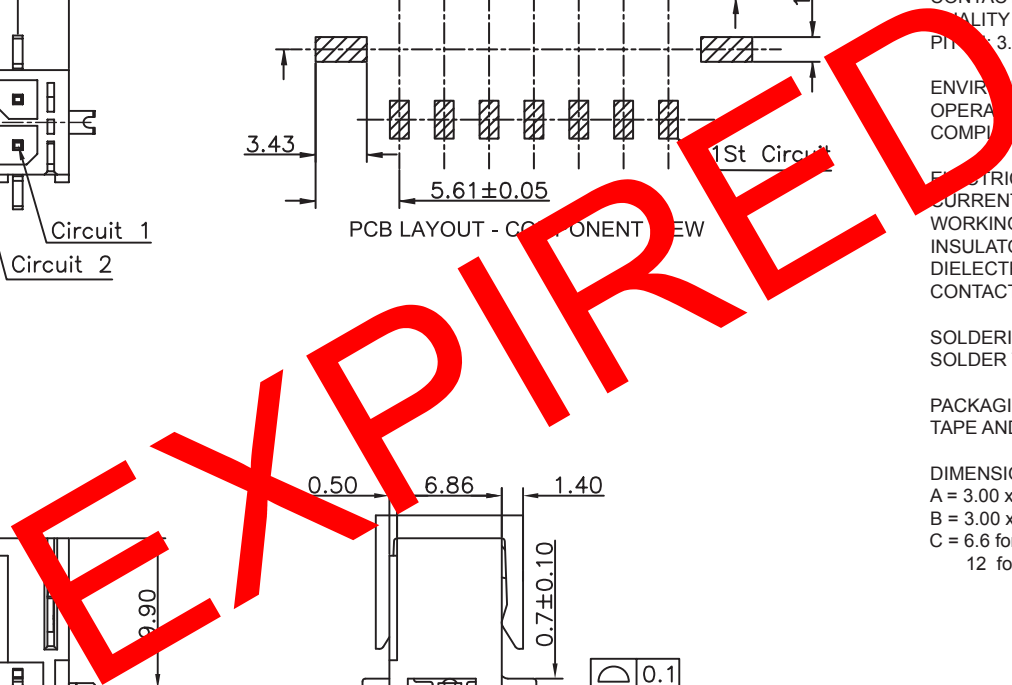
ENVIRONMENTAL
 OPERATING TEMPERATURE: -25 UP TO 105°C
 COMPLIANCE: LEAD FREE AND ROHS

ELECTRICAL
 CURRENT RATING: 5A
 WORKING VOLTAGE: 250V AC
 INSULATOR RESISTANCE: >1000 MOHM
 DIELECTRIC WITHSTANDING VOLTAGE: 1500V AC/MN
 CONTACT RESISTANCE: 10 mOHM MAX

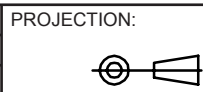
SOLDERING
 SOLDER TEMP.: JEDEC LEAD FREE REFLOW SOLDERING

PACKAGING
 TAPE AND REEL WITH PLASTIC CAP

DIMENSION
 A = 3.00 x (NB. PIN / 2 - 1)
 B = 3.00 x (NB. PIN / 2 + 1) + 0.70
 C = 6.6 for polarity ≤ 12
 12 for polarity > 12



RoHS Compliant			
K	13-JAN-13	DIM A & B	QL
J	06-JUL-12	PLASTIC	GG
I	05-MAR-12	CAP	GG
H	22-FEB-12	DESCRIPTION	GG
REV	DATE	FILE	BY



GENERAL TOLERANCE
 .X = +/- 0.2
 .XX = +/- 0.15



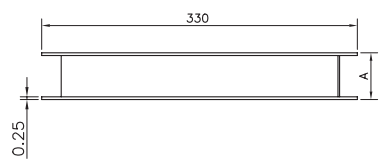
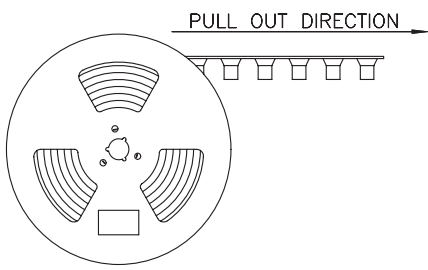
APPROVAL: RJ

UNIT: MM
 SCALE:
 SHEET: 1/2
 DRAW: PEARL

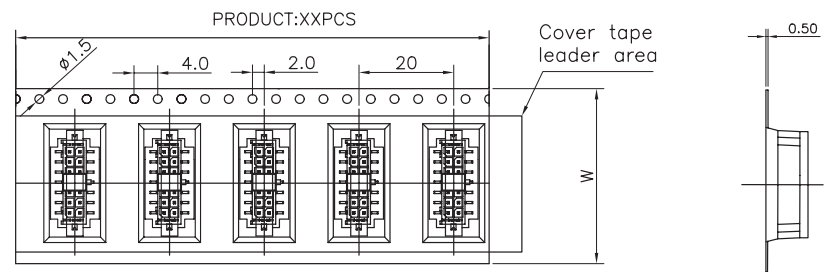
DESCRIPTION: 3.00MM MALE DUAL ROW SMT VERTICAL HEADER WITH SOLDER TAB
 WERI PART NO: 6623 xx 231822

SIZE
A4

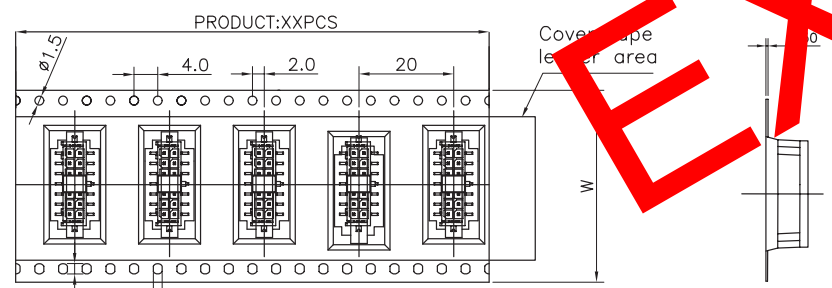
A
 B
 C
 D



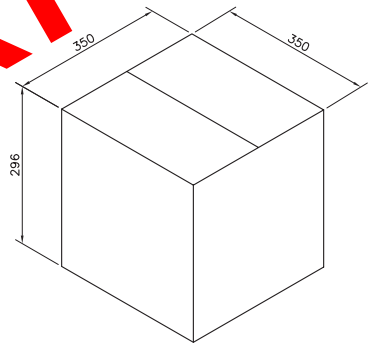
Note:
 1.1.13" reel :200 pcs
 2.Material : Black Conductive Polystyrene Alloy
 3.Thickness : 0.50±0.05mm
 4.All dimensions meet EIA-481-3 requirements
 5.Vacuum Pack



For Reel width (dimension W)16,24mm ,Single row hole



For Reel width (dimension W)32,44,56,72mm ,Double rows hole

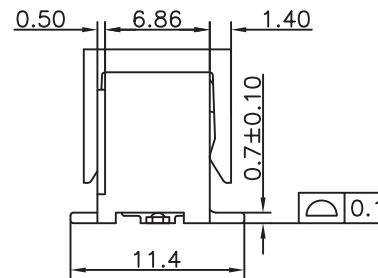
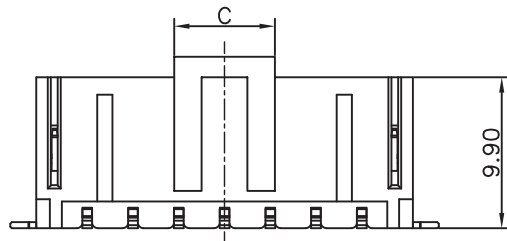
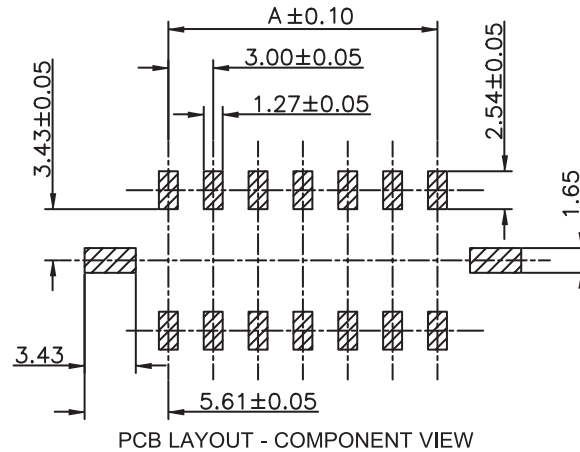
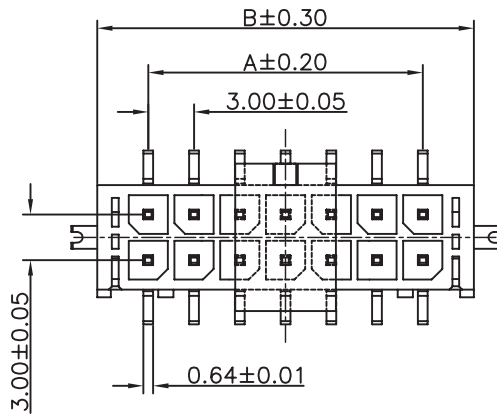


EXPIRED

Pin No	A	PCS/R	R/CTN	Q'TY	
02	24	29	200	8	1600
4	32	29	200	7	1400
06	32	37	200	6	1200
08	44	49	200	5	1000
10	44	49	200	5	1000
12	44	49	200	5	1000
14	44	49	200	5	1000
16	56	61	200	3	600
18	56	61	200	3	600
20	56	61	200	3	600
22	56	61	200	3	600
24	56	61	200	3	600

RoHS Compliant				PROJECTION: 	GENERAL TOLERANCE .X = +/- 0.2 .XX = +/- 0.15	
G						
F						
E						
D				APPROVAL: RJ	UNIT: MM	DESCRIPTION: 3.00MM MALE DUAL ROW SMT VERTICAL HEADER WITH SMT SOLDER TAB
C					SCALE:	
B					SHEET: 2/2	
A					DRAW: PEARL	WERI PART NO: 6623 xx 231822
REV	DATE	FILE	BY			SIZE A4

A
B
C
D



TECHNICAL CHARACTERISTICS

MATERIAL
 INSULATOR: LCP
 FLAMABILITY RATING: UL94-V0
 COLOR: BLACK
 CONTACT MATERIAL: COPPER ALLOY
 CONTACT TYPE: STAMPED
 CONTACT PLATING: TIN
 QUALITY CLASS: 25 MATING CYCLES
 PITCH: 3.00MM

ENVIRONMENTAL
 OPERATING TEMPERATURE: -40 UP TO 105°C
 COMPLIANCE: LEAD FREE AND ROHS

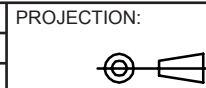
ELECTRICAL
 CURRENT RATING: 5A
 WORKING VOLTAGE: 250V AC
 INSULATOR RESISTANCE: >1000 MOHM
 DIELECTRIC WITHSTANDING VOLTAGE: 1500V AC/MN
 CONTACT RESISTANCE: 10 mOHM MAX

SOLDERING
 SOLDER TEMP.: JEDEC LEAD FREE REFLOW SOLDERING

PACKAGING
 TAPE AND REEL WITH PLASTIC CAP

DIMENSION
 A = 3.00 x (NB. PIN / 2 - 1)
 B = 3.00 x (NB. PIN / 2 + 1) + 0.70
 C = 6.6 for polarity ≤ 14
 12 for polarity > 14

RoHS Compliant			
L	29-JUL-13	DWG & CARAC	QL
K	13-JAN-13	DIM A & B	QL
J	06-JUL-12	PLASTIC	GG
I	05-MAR-12	CAP	GG
H	22-FEB-12	DESCRIPTION	GG
REV	DATE	FILE	BY



GENERAL TOLERANCE
 .X = +/- 0.2
 .XX = +/- 0.15



APPROVAL: RJ

UNIT: MM
 SCALE:
 SHEET: 1/2
 DRAW: PEARL

DESCRIPTION: 3.00MM MALE DUAL ROW SMT VERTICAL HEADER WITH SOLDER TAB

WERI PART NO: 6623 xx 231822

SIZE
A4

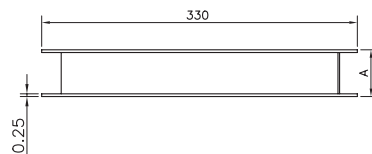
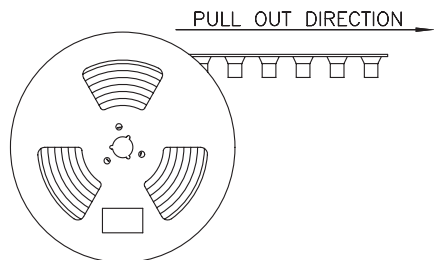
1

2

3

4

5



Note:

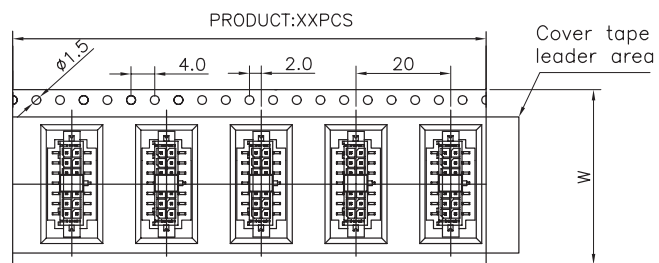
1.13" reel :200 pcs

2.Material : Black Conductive Polystyrene Alloy

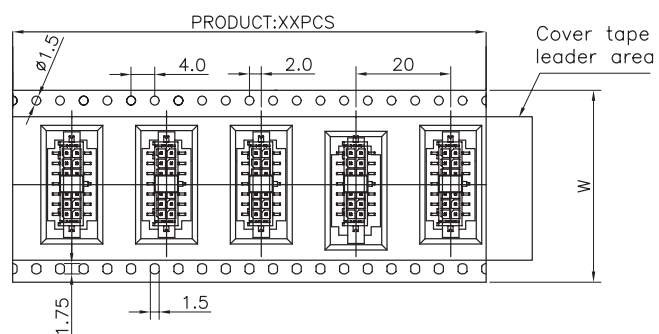
3.Thickness : 0.50 ± 0.05 mm

4.All dimensions meet EIA-481-3 requirements

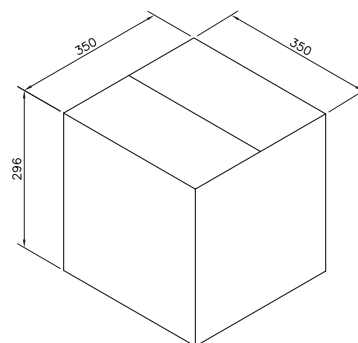
5.Vacuum Pack



For Reel width (dimension W)16,24mm ,Single row hole



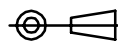
For Reel width (dimension W)32,44,56,72mm ,Double rows hole



Pin No	W	A	PCS/R	R/CTN	Q'TY
02	24	29	200	8	1600
04	32	29	200	7	1400
06	32	37	200	6	1200
08	44	49	200	5	1000
10	44	49	200	5	1000
12	44	49	200	5	1000
14	44	49	200	5	1000
16	56	61	200	3	600
18	56	61	200	3	600
20	56	61	200	3	600
22	56	61	200	3	600
24	56	61	200	3	600

RoHS Compliant

PROJECTION:



GENERAL TOLERANCE

.X = ± 0.2 .XX = ± 0.15 

APPROVAL: RJ

UNIT: MM

SCALE:

SHEET: 2/2

DRAW: PEARL

DESCRIPTION: 3.00MM MALE DUAL ROW SMT VERTICAL HEADER WITH SMT SOLDER TAB

WERI PART NO: 6623 xx 231822

SIZE

A4