



268
HANDHELD CASES

292
UNIVERSAL
PLASTIC
ENCLOSURES

317
HEAVY DUTY
AND ELECTRICAL
ENCLOSURES

341
DEVELOPMENT
BOARD
ENCLOSURES

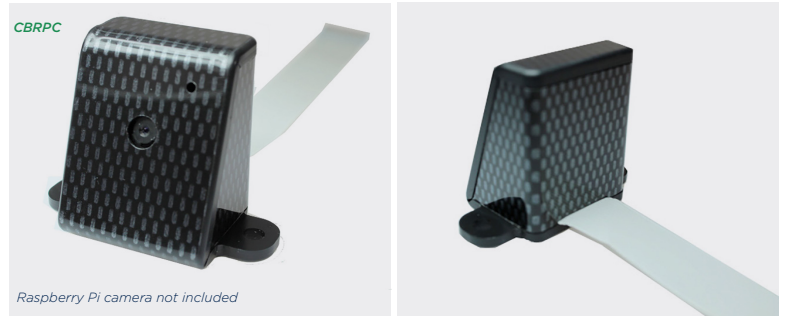
369
VERSATILE IOT
AND SENSOR
ENCLOSURES

Pi Camera Enclosure

Product overview

This Pi Camera enclosure is manufactured using our plastic fabrication process. No screws, no glue - just add your Raspberry Pi Camera!

- Designed to house the Pi Camera via clip-in grooves - **NO SCREWS REQUIRED!**
- All cut-outs are pre-cut into the case - **NO MODS REQUIRED!**
- Wall mountable



| BLACK | CARBON FIBRE | WHITE | CLEAR | THICKNESS | DIMENSIONS |
|-----------|--------------|-----------|-----------|-----------|------------------------------|
| CBRPC-BLK | CBRPC-CAR | CBRPC-WHT | CBRPC-CLR | 3mm | L 25.4mm x W 48mm x H 40.4mm |

KEY FEATURES

High gloss finish | Wall mountable | Zero modifications required

