

- 1
- 2
- 3
- 4
- 5
- 6
- 7
- 8
- 9
- 10
- 11
- 12
- 13
- 14
- 15
- 16
- 17
- 18

**KNOB**

Glass-fibre reinforced polyamide based (PA) technopolymer, colour black, matte finish.

**CLOSING CAP**

Glass-fibre reinforced polyamide-based (PA) technopolymer, light grey colour, press-fit assembly.

**THREADED BODY**

Die cast zinc alloy, epoxy resin coating, RAL 9005 black colour, matte finish.

**THREADED STUD AND CLOSING LEVER**

Zinc-plated steel.

**PACKING RING**

Perburan (NBR).

**SPRING**

Stainless steel.

**LOCKING NUT**

Zinc-plated steel.

**FUNCTIONING**

Close the door and move the lever to the closed position by rotating the knob by 90°.

By a further turn of the knob, an internal device with screw and nut screw axially moves the lever until it reaches the optimal position of closure.

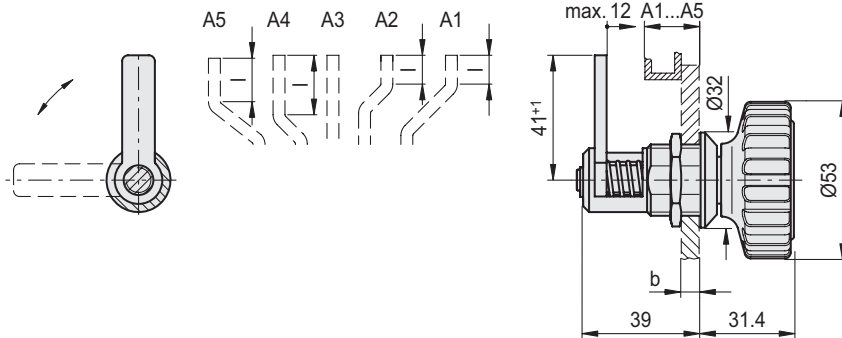
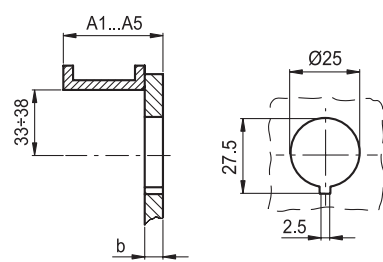
The spring keeps the pressure required to drive the lever.

The latch is inserted into the mounting hole of the door from the lever side and the locking takes place by inserting the locking nut.



Clamping range

Drilling template



Code	Description	l	A1...A5	b	⚖️
37981	MDA-L-A1	9.5	4+16	6	125
37982	MDA-L-A2	9.5	11+23	10	161
37983	MDA-L-A3	-	19+31	12	224
37984	MDA-L-A4	20	27+39	12	281
37985	MDA-L-A5	15	34+46	12	331