

Multipole Connectors - Revos Basic METRIC

The industrial standard, heavy duty, 500V, 16A



Description	Socket Insert		Narrow Entry Hood		Top Entry Hood		Narrow Entry Hood with Locking Levers		Top Entry Hood with Locking Levers	
	Part No.	Part No.	Part No.	Gland	Part No.	Gland	Part No.	Gland	Part No.	Gland
10 POLE	70.300.1040.0	70.310.1040.0	70.350.1035.0	M20	70.352.1035.0	M20	70.355.1035.0	M20	70.357.1035.0	M20
16 POLE	70.300.1640.0	70.310.1640.0	70.350.1635.0	M25	70.352.1635.0	M25	70.355.1635.0	M25	70.357.1635.0	M25
24 POLE	70.300.2440.0	70.310.2440.0	70.350.2435.0	M25	70.352.2435.0	M25	70.355.2435.0	M25	70.357.2435.0	M25
32 POLE	70.300.3253.0	70.310.3253.0	70.350.3235.0	M32	70.352.3235.0	M32	-	-	-	-

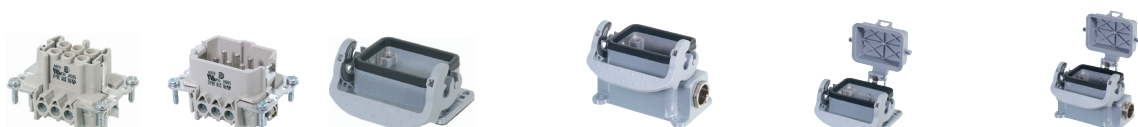


Description	Socket Insert	Plug Insert	Open Entry Base	Double Entry Base		Open Entry Base with Protective Cover		Double Entry Base with Protective Cover	
	Part No.	Part No.	Part No.	Part No.	Gland	Part No.	Part No.	Gland	
10 POLE	70.300.1040.0	70.310.1040.0	70.320.1028.0	70.330.1035.0	M20	70.325.1028.0	70.340.1035.0	M20	
16 POLE	70.300.1640.0	70.310.1640.0	70.320.1628.0	70.330.1635.0	M25	70.325.1628.0	70.340.1635.0	M25	
24 POLE	70.300.2440.0	70.310.2440.0	70.320.2428.0	70.330.2435.0	M25	70.325.2428.0	70.340.2435.0	M25	
32 POLE	70.300.3253.0	70.310.3253.0	*70.320.3228.0	-	-	-	-	-	

* Contrary to picture, these bases have metal levers, more metal lever versions available on page 91.



Description	Socket Insert	Plug Insert	Narrow Entry Hood		Top Entry Hood		Single Entry Base		Single Entry Base with Protective Cover	
	Part No.	Part No.	Part No.	Gland	Part No.	Gland	Part No.	Gland	Part No.	Gland
6 POLE	70.300.0640.0	70.310.0640.0	70.350.0635.0	M20	70.352.0635.0	M20	-	-	-	-
48 POLE	70.300.4840.0	70.310.4840.0	70.350.4835.0	M32	70.352.4835.0	M32	70.331.4835.0	M32	70.344.4835.1	M40



Description	Socket Insert	Plug Insert	Open Entry Base	Double Entry Base		Open Entry Base with Protective Cover		Double Entry Base with Protective Cover	
	Part No.	Part No.	Part No.	Part No.	Gland	Part No.	Part No.	Gland	
6 POLE	70.300.0640.0	70.310.0640.0	70.320.0628.0	70.330.0635.0	M20	70.325.0628.0	70.340.0635.0	M20	
48 POLE	70.300.4840.0	70.310.4840.0	*70.320.4828.0	-	-	*70.325.4828.0	-	-	

Note: PG and Metric thread Sizes

Worldwide the use of PG threads are being changed over to Metric thread sizes. Because of pre-existing demand, we need to supply in both styles of PG and Metric. Please select Metric thread multipoles wherever possible as PG threads will be phased out.



Multipole Connectors - Revos Basic PG

The industrial standard, heavy duty, 500V, 16A

						
	Socket Insert	Plug Insert	Narrow Entry Hood	Top Entry Hood	Narrow Entry Hood with Locking Levers	Top Entry Hood with Locking Levers
Description	Part No.	Part No.	Part No. Gland	Part No. Gland	Part No. Gland	Part No. Gland
10 POLE	70.300.1040.0	70.310.1040.0	70.350.1028.0 PG16	70.352.1028.0 PG16	70.355.1028.0 PG16	70.357.1028.0 PG16
16 POLE	70.300.1640.0	70.310.1640.0	70.350.1628.0 PG21	70.352.1628.0 PG21	70.355.1628.0 PG21	70.357.1628.0 PG21
24 POLE	70.300.2440.0	70.310.2440.0	70.350.2428.0 PG21	70.352.2428.0 PG29	70.355.2428.0 PG21	70.357.2428.0 PG29
32 POLE	70.300.3253.0	70.310.3253.0	70.350.3228.0 PG29	70.352.3228.0 PG29	-	-

						
	Socket Insert	Plug Insert	Open Entry Base	Double Entry Base	Open Entry Base with Protective Cover	Double Entry Base with Protective Cover
Description	Part No.	Part No.	Part No.	Part No. Gland	Part No.	Part No. Gland
10 POLE	70.300.1040.0	70.310.1040.0	99.513.0000.6	70.330.1028.0 PG16	70.325.1028.0	70.340.1028.0 PG16
16 POLE	70.300.1640.0	70.310.1640.0	99.502.0000.6	70.330.1628.0 PG21	70.325.1628.0	70.340.1628.0 PG21
24 POLE	70.300.2440.0	70.310.2440.0	99.531.0000.6	70.330.2428.0 PG21	70.325.2428.0	70.340.2428.0 PG21
32 POLE	70.300.3253.0	70.310.3253.0	70.320.3228.0	-	-	-

						
	Socket Insert	Plug Insert	Narrow Entry Hood	Top Entry Hood	Single Entry Base with Protective Cover	Single Entry Base with Protective Cover
Description	Part No.	Part No.	Part No. Gland	Part No. Gland	Part No. Gland	Part No. Gland
6 POLE	70.300.0640.0	70.310.0640.0	70.350.0628.0 PG13.5	70.352.0628.0 PG13.5	-	-
48 POLE	70.300.4840.0	70.310.4840.0	70.363.4828.0 PG36	70.362.4828.0 PG29	70.331.4828.0 PG29	70.344.4828.0 PG36

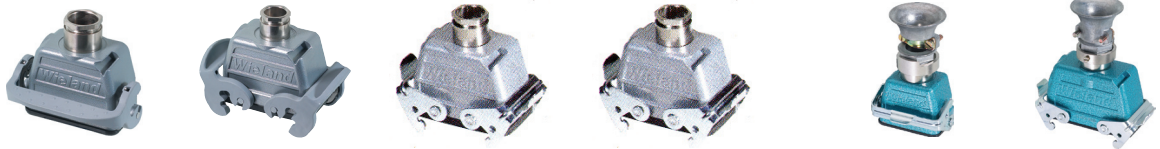
						
	Socket Insert	Plug Insert	Open Entry Base	Double Entry Base	Open Entry Base with Protective Cover	Double Entry Base with Protective Cover
Description	Part No.	Part No.	Part No.	Part No. Gland	Part No.	Part No. Gland
6 POLE	70.300.0640.0	70.310.0640.0	99.503.0000.6	70.330.0628.0 PG16	70.325.0628.0	70.340.0628.0 PG16
48 POLE	70.300.4840.0	70.310.4840.0	70.320.4828.0	-	70.325.4828.0	-

Note: PG and Metric thread Sizes

Worldwide the use of PG threads are being changed over to Metric thread sizes. Because of pre-existing demand, we need to supply in both styles of PG and Metric. Please select Metric thread multipoles wherever possible as PG threads will be phased out.

Multipole Connectors - Revos Coupling Hoods

Coupling hoods for cable to cable coupling



Description	Basic		Basic		Basic		Basic		Exi trumpet		Exi trumpet	
	Part No.	Gland	Part No.	Gland	Part No.	Gland	Part No.	Gland	Part No.	Gland	Part No.	Gland
6 POLE	70.372.0635.0	M20	-	-	99.547.0000.6	M20	-	-	99.741.3329.7	M20	-	-
10 POLE	71.372.1035.0	M20	70.372.1035.0	M20	99.548.0000.6	M20	99.700.0120.5	PG21	-	-	99.743.3329.7	M20
16 POLE	71.372.1635.0	M25	70.372.1635.0	M25	99.549.0000.6	M25	70.372.1628.0	PG21	-	-	99.745.3329.7	M25
24 POLE	71.372.2435.0	M25	70.374.2435.0	M32	-	-	-	-	-	-	99.748.3329.7	M32

Multipole Connectors - Revos Mini

Metric

Thanks to its compact contact inserts with 3 to 8 poles revos MINI fits into mechanical, control and switchgear engineering applications as well as small motors and lighting technology.

Revos MINI with its connector housings in zinc die-cast or polyamide withstand the toughest application conditions.

Specifications:

- Screw connect 600V, 10A
- Crimp connect 50V,10A
- see page 96, for HD crimp contacts, use extraction tool" 1 "



Size	Socket insert screw clamp		Plug insert screw clamp		Socket insert crimp w/o contacts		Plug insert crimp w/o contacts		Basic single lever		Basic double lever	
	Part No.	Part No.	Part No.	Part No.	Part No.	Part No.	Part No.	Gland	Part No.	Gland	Part No.	Gland
3 POLE	73.300.0353.0	73.310.0353.0	-	-	-	-	76.350.0736.0	M20	76.352.0736.0	M20	-	-
4 POLE	73.300.0453.0	73.310.0453.0	-	-	-	-	76.350.0736.0	M20	76.352.0736.0	M20	-	-
7 POLE	-	-	*73.700.0753.0	*73.710.0753.0	76.350.0736.0	M20	76.352.0736.0	M20	-	-	-	-



Size	Closed bottom base		Open entry base		Open entry angled base		Coupling hood	
	Part No.	Gland	Part No.	Part No.	Part No.	Part No.	Gland	
3 POLE	76.322.0736.0	M20	76.320.0729.0	76.321.0729.0	76.372.0736.0	M20	-	
4 POLE	76.322.0736.0	M20	76.320.0729.0	76.321.0729.0	76.372.0736.0	M20	-	
7 POLE	76.322.0736.0	M20	76.320.0729.0	76.321.0729.0	76.372.0736.0	M20	-	