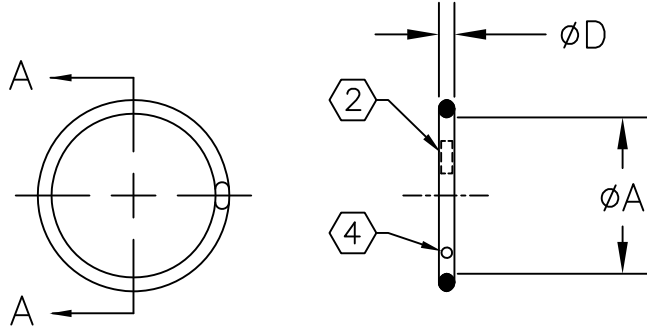


THIS DRAWING AND THE INFORMATION SET FORTH HERE-ON ARE THE PROPERTY OF TYCO ELECTRONICS, AND ARE TO BE HELD IN TRUST AND CONFIDENCE. PUBLICATION, DUPLICATION, DISCLOSURE, OR USE FOR ANY PURPOSE NOT EXPRESSLY AUTHORIZED IN WRITING BY TYCO ELECTRONICS IS PROHIBITED.

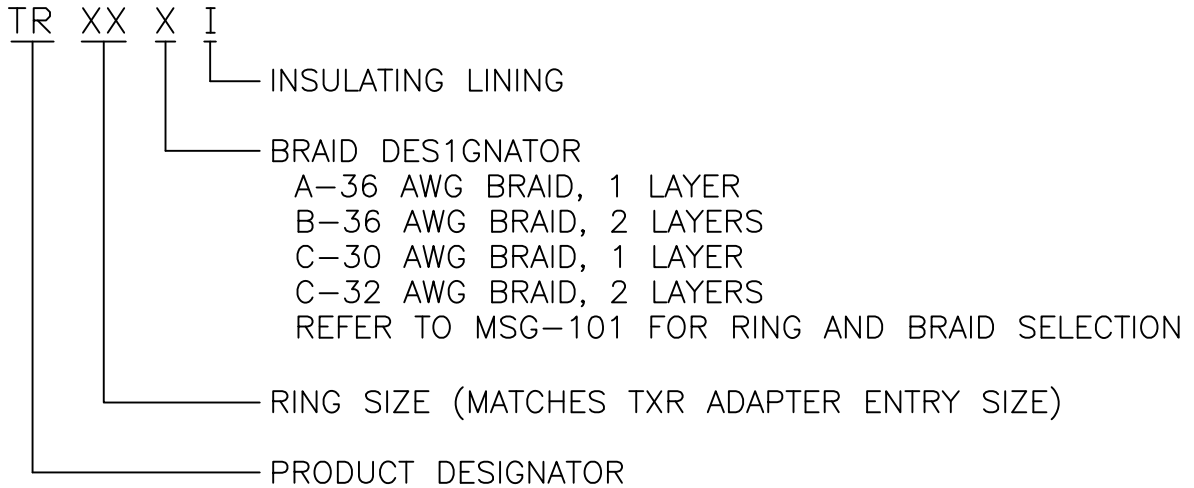
| REVISIONS |                                     |             |          |
|-----------|-------------------------------------|-------------|----------|
| LTR       | DESCRIPTION                         | DATE        | APPROVED |
| C1        | REVISED PER ECO-11-005139           | 20APR11     | HMR      |
| C2        | ADMINISTRATIVE CHANGE ECO-11-012135 | Jun/13/2011 | M.HIGGY  |

SCOPE:

THIS SPECIFICATION PROVIDES A DESCRIPTION OF HEAT SHRINKABLE METAL RINGS FOR TERMINATING BRAIDED SHIELD ONTO ADAPTORS DESIGNED FOR THAT PURPOSE.



PART DESCRIPTION:



NOTES:

1. MATERIAL: TINEL ALLOY X.
2. THE OUTSIDE SURFACE OF THE RING IS MARKED WITH TWO STRIPES OF THERMOCHROMIC PAINT WHICH CHANGE COLOR WHEN THE APPROPRIATE INSTALLATION TEMPERATURE IS REACHED.
3. "AI" RINGS ARE IDENTIFIED BY THE ABSENCE OF A RED OR BLUE DOT. REFER TO NOTE 4.
4. "BI" RINGS ARE MARKED WITH A RED DOT. "CI" RINGS ARE MARKED WITH A BLUE DOT.
5. REFER TO MIP-101 FOR INSTALLATION PROCEDURE.

Raychem MTC  
CUSTOMER DRAWING

© 2008-2011 Tyco Electronics. All Rights Reserved.

UNLESS OTHERWISE SPECIFIED DIMENSIONS ARE INCHES. METRIC DIMENSIONS ARE IN BRACKETS.

DECIMAL TOLERANCES

|           |        |
|-----------|--------|
| .XXX ± -- | [ mm ] |
| .XX ± --  | [ mm ] |
| .X ± --   | [ mm ] |

ANGLE TOLERANCE

|         |
|---------|
| .X ± -- |
|---------|

|                        |                  |
|------------------------|------------------|
| DRAWN<br>E. Goldy      | DATE<br>05-17-93 |
| CHECKED<br>_____       | DATE<br>_____    |
| APPROVED<br>W.C. Gay   | DATE<br>5-26-93  |
| CAD FILE:<br>TR-CD     |                  |
| THIRD ANGLE PROJECTION |                  |



|                          |                     |                |              |
|--------------------------|---------------------|----------------|--------------|
| TITLE<br>TINEL-LOCK RING |                     |                |              |
| SIZE<br>A                | CAGE CODE:<br>06090 | DWG. NO.<br>TR | REV:<br>C2   |
| SCALE: NONE              |                     |                | SHEET 1 OF 2 |

| PART DESCRIPTION | $\phi A$        |                    | $\phi D$             |
|------------------|-----------------|--------------------|----------------------|
|                  | MIN AS SUPPLIED | MAX FREE RECOVERED |                      |
| TR04AI           | .397 [10.08]    | .379 [9.63]        | .073±.005 [1.85±.13] |
| TR04BI           | .416 [10.57]    | .398 [10.11]       | .073±.005 [1.85±.13] |
| TR05AI           | .460 [11.68]    | .440 [11.18]       | .073±.005 [1.85±.13] |
| TR05BI           | .479 [12.17]    | .458 [11.63]       | .073±.005 [1.85±.13] |
| TR06AI           | .523 [13.28]    | .499 [12.68]       | .073±.005 [1.85±.13] |
| TR06BI           | .548 [13.92]    | .523 [13.28]       | .073±.005 [1.85±.13] |
| TR07AI           | .586 [14.88]    | .559 [14.20]       | .073±.005 [1.85±.13] |
| TR07BI           | .606 [15.39]    | .578 [14.68]       | .073±.005 [1.85±.13] |
| TR08AI           | .650 [16.51]    | .620 [15.75]       | .073±.005 [1.85±.13] |
| TR08BI           | .670 [17.02]    | .639 [16.23]       | .073±.005 [1.85±.13] |
| TR10AI           | .782 [19.86]    | .744 [18.90]       | .073±.005 [1.85±.13] |
| TR10BI           | .802 [20.37]    | .763 [19.38]       | .073±.005 [1.85±.13] |
| TR10CI           | .830 [21.08]    | .791 [20.09]       | .073±.005 [1.85±.13] |
| TR12AI           | .912 [23.17]    | .867 [22.02]       | .073±.005 [1.85±.13] |
| TR12BI           | .931 [23.65]    | .886 [22.50]       | .073±.005 [1.85±.13] |
| TR12CI           | .960 [24.38]    | .912 [23.17]       | .073±.005 [1.85±.13] |
| TR14AI           | 1.040 [26.42]   | .988 [25.10]       | .073±.005 [1.85±.13] |
| TR14BI           | 1.060 [26.92]   | 1.007 [25.58]      | .073±.005 [1.85±.13] |
| TR14CI           | 1.089 [27.66]   | 1.033 [26.24]      | .073±.005 [1.85±.13] |
| TR16AI           | 1.171 [29.74]   | 1.111 [28.22]      | .073±.005 [1.85±.13] |
| TR16BI           | 1.191 [30.25]   | 1.129 [28.68]      | .073±.005 [1.85±.13] |
| TR16CI           | 1.216 [30.89]   | 1.154 [29.31]      | .073±.005 [1.85±.13] |
| TR18AI           | 1.301 [33.05]   | 1.234 [31.34]      | .073±.005 [1.85±.13] |
| TR18BI           | 1.320 [33.53]   | 1.252 [31.80]      | .073±.005 [1.85±.13] |
| TR20AI           | 1.430 [36.32]   | 1.357 [34.47]      | .073±.005 [1.85±.13] |
| TR20BI           | 1.450 [36.83]   | 1.376 [34.95]      | .073±.005 [1.85±.13] |
| TR22AI           | 1.543 [39.19]   | 1.463 [37.16]      | .088±.007 [2.24±.18] |
| TR22BI           | 1.561 [39.65]   | 1.481 [37.62]      | .088±.007 [2.24±.18] |
| TR24AI           | 1.673 [42.49]   | 1.587 [40.31]      | .088±.007 [2.24±.18] |
| TR24BI           | 1.691 [42.95]   | 1.605 [40.77]      | .088±.007 [2.24±.18] |
| TR28AI           | 1.932 [49.07]   | 1.838 [46.68]      | .088±.007 [2.24±.18] |
| TR28BI           | 1.950 [49.53]   | 1.858 [47.19]      | .088±.007 [2.24±.18] |

If this document is printed it becomes uncontrolled. Check for the latest revision

Raychem MTC  
CUSTOMER DRAWING

© 2008–2011 Tyco Electronics. All Rights Reserved.



TE Connectivity

|                    |                    |             |                     |                |            |
|--------------------|--------------------|-------------|---------------------|----------------|------------|
| DRAWN<br>E. Goldy  | DATE<br>05-17-1993 | SIZE<br>A   | CAGE CODE:<br>06090 | DWG. NO.<br>TR | REV:<br>C2 |
| CAD FILE:<br>TR-CD |                    | SCALE: NONE |                     | SHEET 2 OF 2   |            |