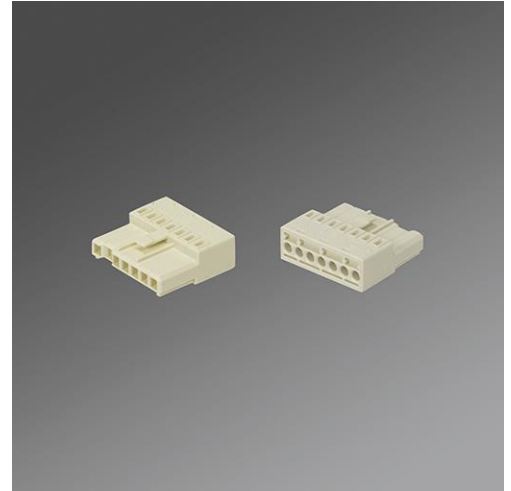


# Datasheet

# REGIOLUX

Category (ETIM):	end infeed
Type:	Socket/plug combined-SDTA
Order number:	18203092100
Certifications:	Indoor, CE
Colour of the housing:	off-white
Weight (net) (kg):	0.01
mounting method:	Mounting
EAN-number:	4020863060986
Commodity code:	85369010

**SDTA F-7 • ce • 18203092100**



SDTA F-7

end infeed made of Polymer, 7pol., 5/7x1.5-2.5mm<sup>2</sup> for SDT

Wiring: 7x  
Certifications: Indoor, CE

Regiolux GmbH  
Type: SDTA F-7 ce  
Article number: 18203092100  
Product deep link: <http://www.regiolux.de/de/article/18203092100>