

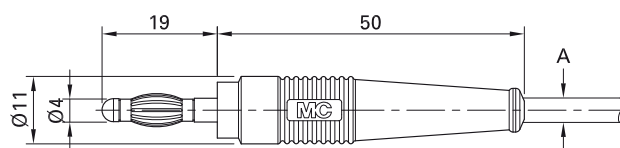
Plug L-41...

In-line, Ø 4 mm, with spring-loaded MULTILAM for self-assembly of test leads.

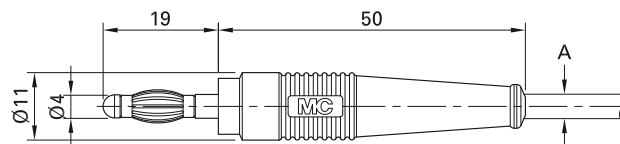
Type L-41Q with Ø 4 mm lateral hole for additional test connection.

Solder connection.

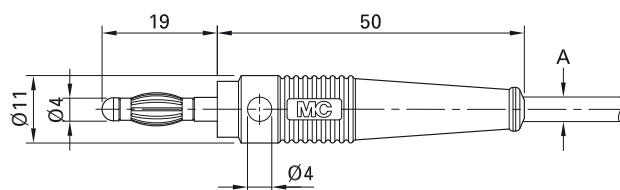
L-41



L-41/A



L-41Q



Order No.	Type	Rated voltage/current	Cable (A)		*Standard colors
64.9200-*	L-41	30 VAC / 32 A 60 VDC / 32 A	max. Ø 3.9 mm 2.5 mm ²	Ni	21 22 23 24 25
64.1020-*	L-41/A	30 VAC / 32 A 60 VDC / 32 A	max. Ø 3.9 mm 2.5 mm ²	Au	21 22 23 24 25 29
64.9199-*	L-41Q	30 VAC / 32 A 60 VDC / 32 A	max. Ø 3.9 mm 2.5 mm ²	Ni	21 22 23 24 25 26 27 29



Optional colors 26 27 28

Further information, page 6