

GN 936 | Door lock handles

with or without built-in lock, zinc alloy



- 1
- 2
- 3
- 4
- 5
- 6
- 7
- 8
- 9
- 10
- 11
- 12
- 13
- 14
- 15
- 16
- 17
- 18

MATERIAL

Die-cast zinc alloy, epoxy resin coating, RAL 9005 black colour (**SW**) or RAL 9006 grey colour (**SR**), matte finish.

TWO KEYS

Nickel-plated steel, removable in two positions at 180°.

SCREW COVERS

Polyamide based (PA) technopolymer, RAL 9005 black colour (**SW**) or RAL 9006 grey colour (**SR**), matte finish.

RETURN SPRING

AISI 302 stainless steel.

STANDARD EXECUTIONS

- **GN 936-SL**: without lock.
- **GN 936-SCL**: with single combination lock: all locks have the same combination and are all operated with the same key.
- **GN 936-SUL**: with different combination lock: each lock has a pair of keys with different combination.

FEATURES AND APPLICATIONS

GN 936 slam latches enable doors and closures to be effortlessly closed.

The latch engages automatically when the door is closed

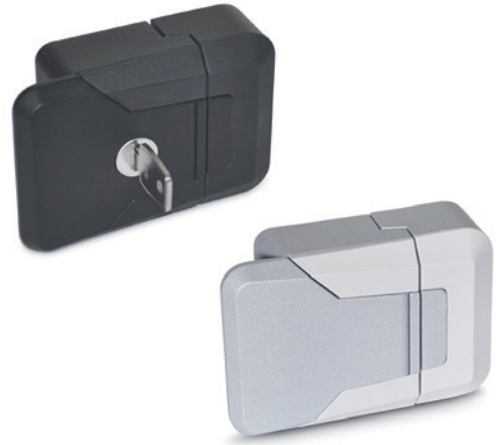
Fastening holes with slots allow fastening to profile systems with different cross sections.

ASSEMBLY INSTRUCTIONS

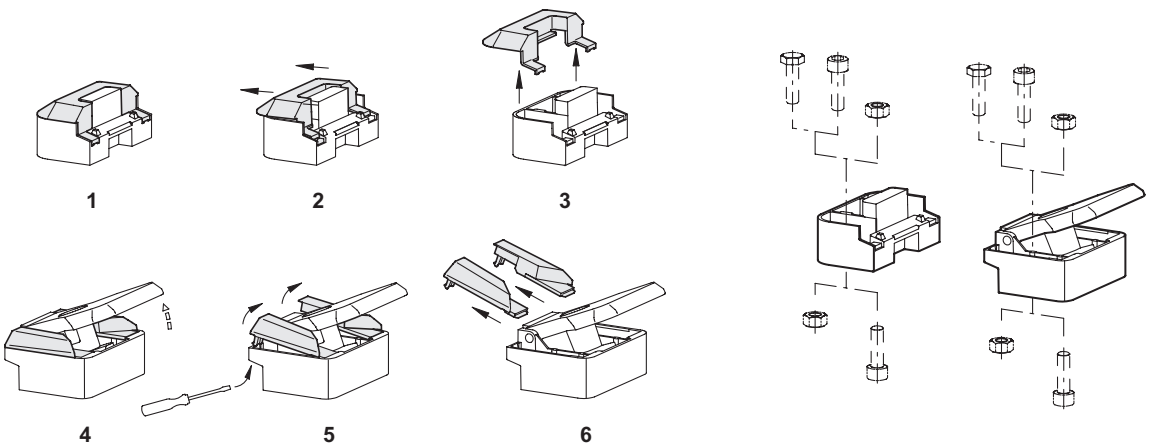
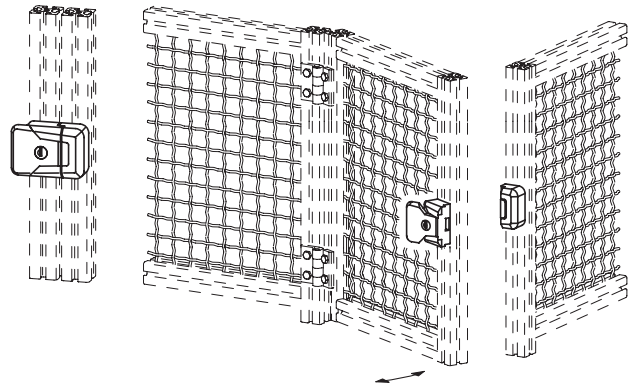
Before installation, remove the screw covers as shown in the drawing below.

For mounting, cylinder head screws or hexagonal head screws with M6 threading can be used. After installation, the screw covers are remounted in reverse order. (See diagram below)

Covers cannot be removed when the cover is closed, in order to protect the machinery on which they are mounted from any acts of vandalism. The slots allow easy adjustment of the prescribed distance of 1 mm (see diagram) whether the fixing is done from the front or from the back.



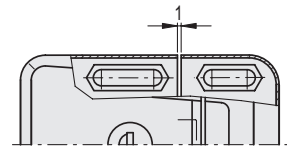
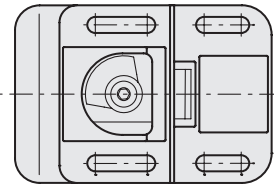
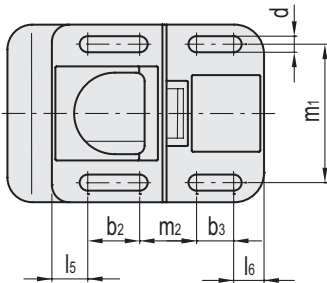
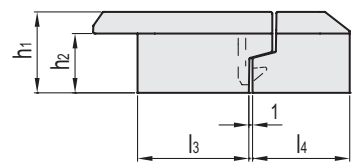
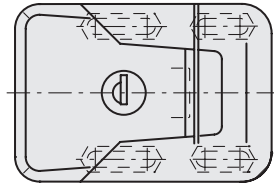
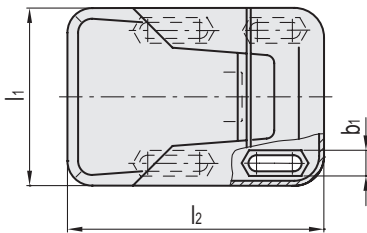
Application examples





GN 936-SL

GN 936-SCL
GN 936-SUL



■ SW RAL9005 ■ SR RAL9006

GN 936-SL

Code	Description	l1	b1	b2	b3	h1	h2	d	l2	l3	l4	l5	l6	m1	m2	⚖
GN.40007	GN 936-72-SL-SW	72	10.3	21	15	33	24	6.5	104	45	40	14.5	12.5	56	23	369
GN.40005	GN 936-72-SL-SR	72	10.3	21	15	33	24	6.5	104	45	40	14.5	12.5	56	23	369

GN 936-SCL

Code	Description	l1	b1	b2	b3	h1	h2	d	l2	l3	l4	l5	l6	m1	m2	⚖
GN.40003	GN 936-72-SCL-SW	72	10.3	21	15	33	24	6.5	104	45	40	14.5	12.5	56	23	416
GN.40001	GN 936-72-SCL-SR	72	10.3	21	15	33	24	6.5	104	45	40	14.5	12.5	56	23	420

GN 936-SUL

Code	Description	l1	b1	b2	b3	h1	h2	d	l2	l3	l4	l5	l6	m1	m2	⚖
GN.40011	GN 936-72-SUL-SW	72	10.3	21	15	33	24	6.5	104	45	40	14.5	12.5	56	23	418
GN.40009	GN 936-72-SUL-SR	72	10.3	21	15	33	24	6.5	104	45	40	14.5	12.5	56	23	415