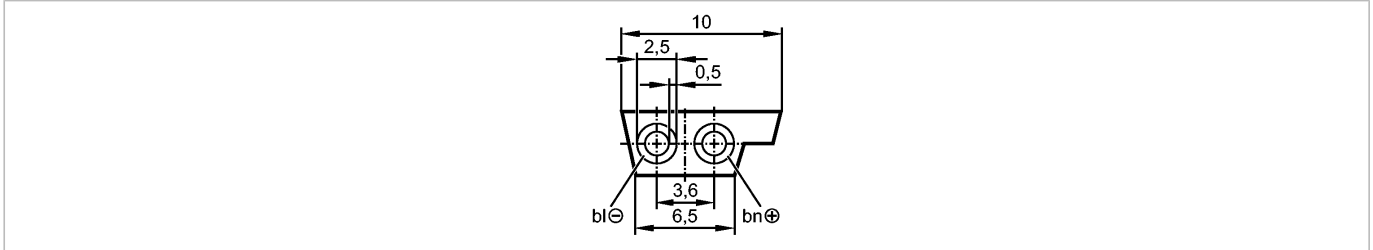




Flat cable 100 meter TPE bk

Bus system AS-Interface



Product characteristics

AS-i flat cable

Reverse polarity protection due to special shape

for use of insulation displacement technology

Electrical data

Electrical design	AS-i
Operating voltage [V]	26.5...31.6 DC (AS-i)
Environment	
Ambient temperature [°C]	-40...105
Protection	IP 67
Mechanical data	
Weight [kg]	7.828
Electrical connection	
Connection	/ 100 m; 2 x 1.5 mm <sup>2</sup>
Material	TPE
Sheath colour	black
Remarks	
Remarks	100 m supplied on a cable drum
Pack quantity [piece]	1