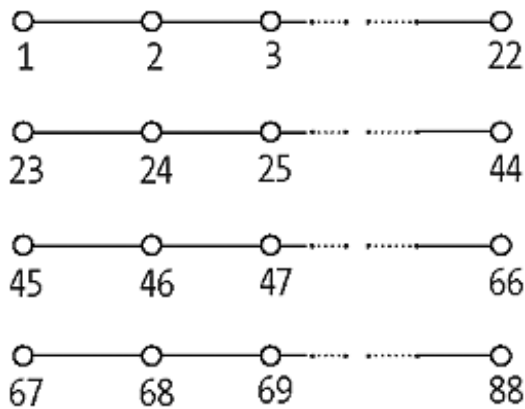
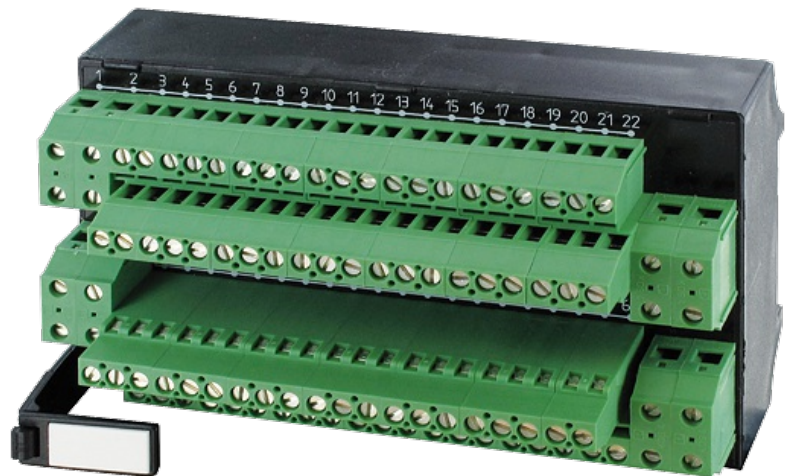
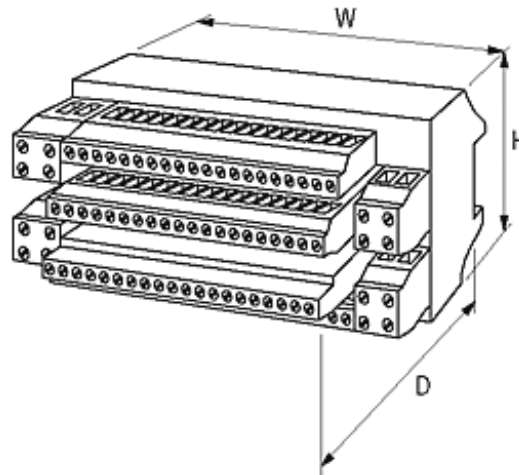


**PKB 2 FOR SIGNAL TRANSFER**

250V / 25 A

4×22-pole  
25 A per potential rail  
Screw plug-in terminals

Input terminal: max. 6 mm<sup>2</sup> single core, total current: max. 100 A[Link to Product](#)**Illustration**



Product may differ from Image

### Technical Data

Operating voltage	max. 250 V AC
Operating current per bit	25 A per potential rail
Total current	max. 100 A
Material group	(EN 60664-1) over voltage, category II

### General data

Connection	Screw plug-in terminal: max. 4 mm <sup>2</sup> , input terminal: max. 6 mm <sup>2</sup> single wire (AWG 9)
Mounting method	DIN-rail mountable (EN 60715)
Dimensions H × W × D	75×135×66 mm
Temperature range	-20...+60 °C

### Commercial data

country of origin	CZ
customs tariff number	85369010
minimum order quantity	1