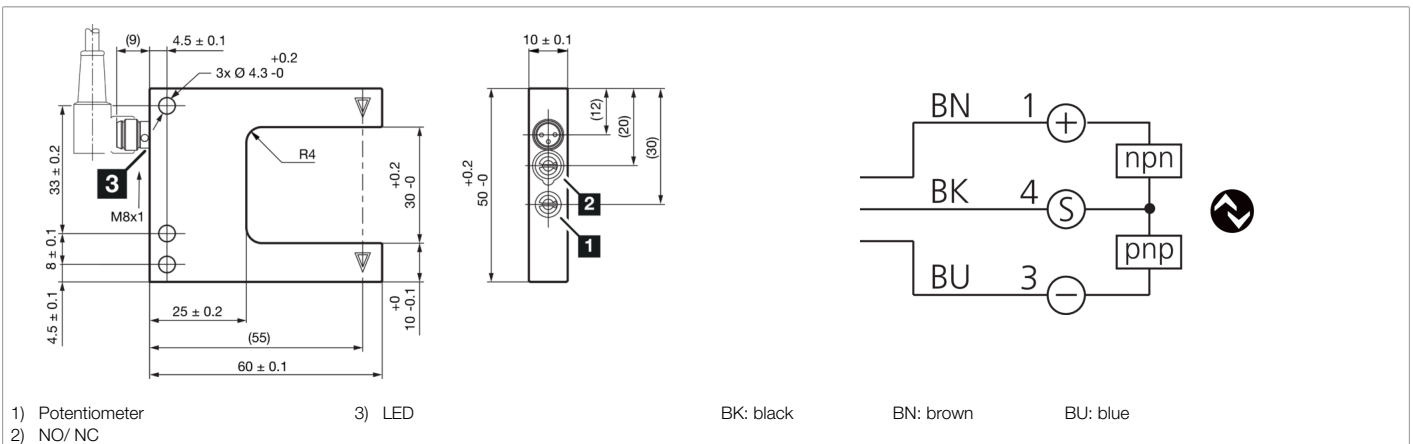
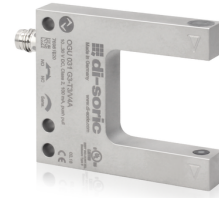




210891
OGU 031 G3-T3/V4A
Fork light barrier

- Robust stainless steel housing for use in the pharmaceutical, beverage and food industries
- 4 operating modes as an IO-Link parameter
- Switch-on/off delay as an IO-Link parameter
- Diagnostics with IO-Link
- Sensitivity is adjustable
- High switching frequency
- Light/dark switching
- Bright ring LED
- High protection type
- 5-year warranty



| Function | | | | | | | | | | | | | |
|----------|--|--|--|--|--|--|--|--|--|--|--|--|--|
| | | | | | | | | | | | | | |

| Technical data (typ.) | +20°C, 24 V DC |
|-----------------------------------|---|
| Service voltage | 10 ... 30 V DC |
| No-load current (max.) | 30 mA |
| Insulation voltage endurance | 500 V |
| Leg length internal | 35 mm |
| Housing dimensions | 50 x 60 x 10 mm |
| Housing length | 60 mm |
| Housing height | 50 mm |
| Housing width | 10 mm |
| Housing material | Stainless steel (V4A, 1.4404 / AISI 316L - 1.4571 / AISI 316Ti) |
| Protection class | III, operation on protective low voltage |
| Operating principle | Optical |
| Evaluation | digital |
| Design | Fork |
| Operation modes | STANDARD, HIGH RESOLUTION, POWER, SPEED |
| Switching output | Push-pull, 100 mA, NO/NC, switchable |
| Interface | IO-Link (V1.1, COM2 38.4 kBd, Smart Sensor Profile) |
| Light source | LED |
| Color | red |
| Modulation | Clocked |
| Fork opening | 30 mm |
| Resolution (factory setting) | 0,3 mm (STANDARD) |
| Reproducibility (factory setting) | 0,02 mm (STANDARD) |
| Resolution (STANDARD) | 0,3 mm |



210891
OGU 031 G3-T3/V4A
Fork light barrier

| Technical data (typ.) | +20°C, 24 V DC |
|---------------------------------------|--|
| Reproducibility (STANDARD) | 0,02 mm |
| Resolution (HIGH RESOLUTION) | 0,2 mm |
| Reproducibility (HIGH RESOLUTION) | 0,02 mm |
| Resolution (POWER) | 1 mm |
| Reproducibility (POWER) | 0,02 mm |
| Resolution (SPEED) | 0,3 mm |
| Reproducibility (SPEED) | 0,02 mm |
| Sensitivity adjustment | Potentiometer or IO-Link |
| Switching frequency (factory setting) | 5.000 Hz (STANDARD) |
| Switching frequency (STANDARD) | 5.000 Hz |
| Switching frequency (HIGH RESOLUTION) | 1.500 Hz |
| Switching frequency (POWER) | 250 Hz |
| Switching frequency (SPEED) | 8.000 Hz |
| Ambient temperature during operation | -25 ... +60 °C |
| Protection type | IP 67 |
| Connection | Connector, M8, 3-pin |
| Connection cable | TK ... |
| More information / accessories | https://www.di-soric.com/210891 |