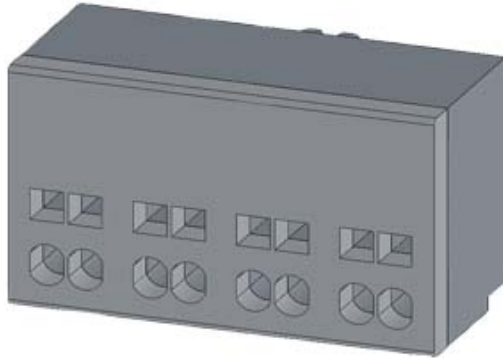


AUXILIARY SWITCH, 1 NC CONTACT, 1 NO CONTACT, CONNECTION AUXILIARY CIRCUIT: SPRING-LOADED TERMINAL,



General technical data:

product brand name		SIRIUS
Product designation		auxiliary switch compact feeder
Protection class IP		IP20
Relative humidity during operation	%	10 ... 90
Ambient temperature		
• during transport	°C	-55 ... +80
• during storage	°C	-55 ... +80
• during operation	°C	-20 ... +60
Equipment marking acc. to DIN EN 61346-2		K
Equipment marking acc. to DIN 40719 extended according to IEC 204-2 acc. to IEC 750		K

Auxiliary circuit:

Number of NC contacts for auxiliary contacts		1
Number of NO contacts for auxiliary contacts		1

Installation/ mounting/ dimensions:

Width	mm	45
Height	mm	32
Depth	mm	25

Connections/ Terminals:

Wire stripping length	mm	10
Type of electrical connection		
• for auxiliary and control current circuit		spring-loaded terminals

Type of connectable conductor cross-section for auxiliary contacts		
<ul style="list-style-type: none"> • solid • finely stranded <ul style="list-style-type: none"> — with core end processing — without core end processing 		2x (0.25 ... 2.5 mm ²)
		2x (0.25 ... 1.5 mm ²)
		2x (0.25 ... 2.5 mm ²)
Type of connectable conductor cross-section for AWG conductors for auxiliary contacts		2x (24 ... 14)

Certificates/ approvals:

Certificate of suitability	IEC / EN 60947-6-2
----------------------------	--------------------

General Product Approval	EMC	Functional Safety/Safety of Machinery	Shipping Approval
--------------------------	-----	---------------------------------------	-------------------



Shipping Approval	other
-------------------	-------



[Declaration of Conformity](#)

[Environmental Confirmations](#)

other

[other](#)

Further information

Information- and Downloadcenter (Catalogs, Brochures,...)

<http://www.siemens.com/industrial-controls/catalogs>

Industry Mall (Online ordering system)

<http://www.siemens.com/industrymall>

Cax online generator

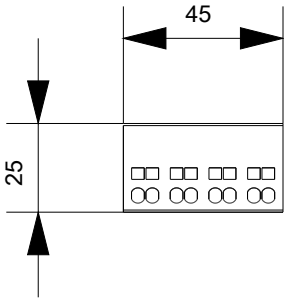
<http://support.automation.siemens.com/WW/CAXorder/default.aspx?lang=en&mlfb=3RA69132A>

Service&Support (Manuals, Certificates, Characteristics, FAQs,...)

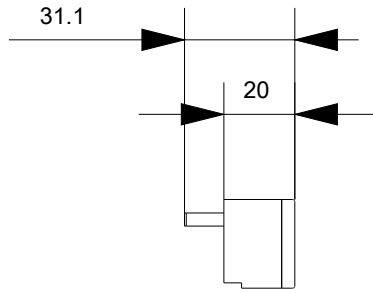
<http://support.automation.siemens.com/WW/view/en/3RA69132A/all>

Image database (product images, 2D dimension drawings, 3D models, device circuit diagrams, EPLAN macros, ...)

<http://www.automation.siemens.com/bilddb/index.aspx?attID9=3RA69132A&lang=en>



last modified:



09.03.2015