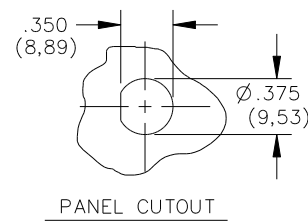
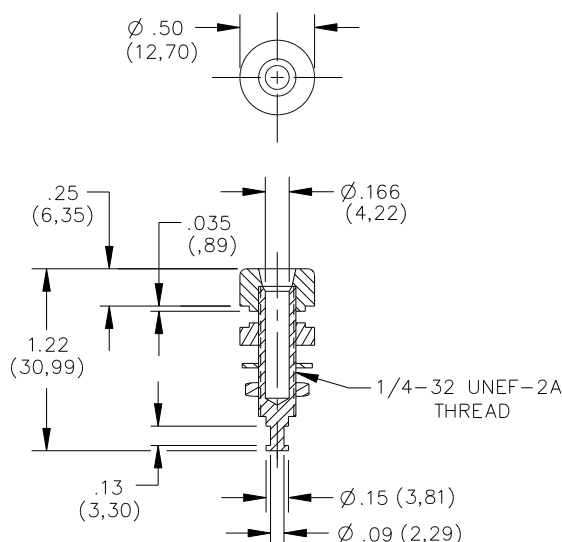
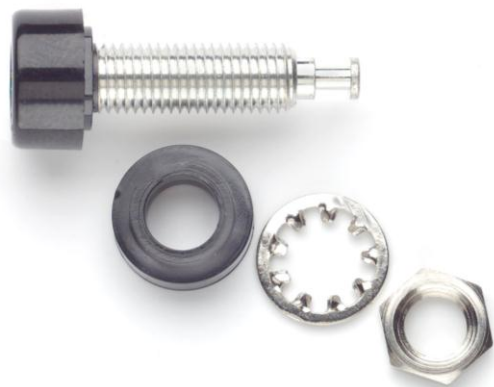


**Model 1581, 2854 & 4900
Panel Mount Banana Jack**



Features

- Banana Jacks mount into panels ranging in thickness from .063" (1.6mm) to .375" (9.5mm).
- Model 4900 features Polyphenylene Sulfide for high temperature applications.
- Model 2854 features gold plated body for optimum electrical connection.
- Model 1581 features bright tin plating.

Materials

Banana Jack: Body – Brass, Nickel Plated, (Model 2854, Brass, Gold Plated)
 Insulators: Polycarbonate (Model 4900, High Temperature Polyphenylene Sulfide)
 ¼ Internal Locking Washer: Steel, Nickel Plated
 ¼-32 Hex Nut: Brass, Nickel Plated

Ratings

Operating Temperature: +115°C (+239°F), (Model 4900 +220°C (+428°F))
 Operating Voltage: For *CE compliance* and for personal safety, do not hold in hand when voltages exceed 30 Vrms/60 Vdc.
 Maximum voltage for *hands free use* in controlled testing environments: 2500 WVDC
 Do not use on circuits where transient stresses can exceed the rated voltage.
 Current: 15 Amperes

Ordering Information Model: #-Color Code

1581 Std. Colors: -0 Black, -1 Brown, -2 Red, -3 Orange, -4 Yellow, -5 Green, -6 Blue, -7 Violet, -8 Gray, -9 White
 2854 Std. Colors: -0 Black, -1 Brown, -2 Red, -4 Yellow, -5 Green, -6 Blue, -8 Gray, -9 White (*Other colors available, contact Pomona Technical Support: technicalsupport@pomonatest.com*)
 4900 Std. Colors: -0 Black, -6 Blue
 Sold unassembled, in packages of 10 per color
 Ordering Example: 2854-2 Gold Plated Banana Jack, Color: Red

USA: Sales: 800-490-2361
 Technical Support: technicalsupport@pomonatest.com
 Fax: 425-446-5844
Europe: 31-(0) 40 2675 150 **International:** 425-446-5500
Where to Buy: www.pomonaelectronics.com

All dimensions are in inches. Tolerances (except noted): .xx = ±.02" (.51 mm), .xxx = ±.005" (.127 mm). All specifications are to the latest revisions. Specifications are subject to change without notice. Registered trademarks are the property of their respective companies.