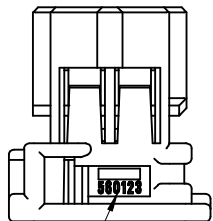
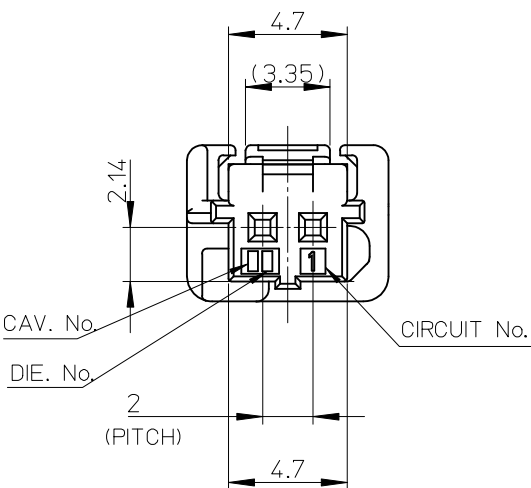
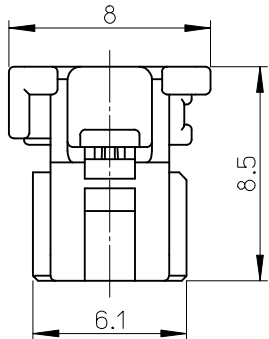
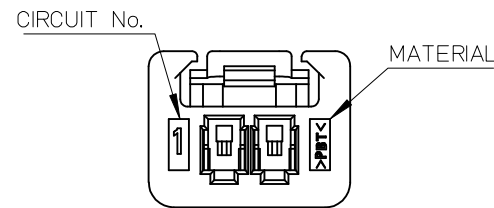
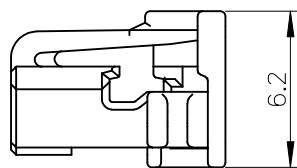
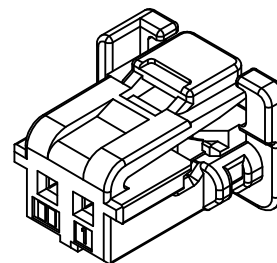


GENERAL TOLERANCE										USED ON
10 MAX	30 MAX	50 MAX	70 MAX	100 MAX	120 MAX	250 MAX	250 OVR	ANGLE	ECCENT	
±0.15	±0.20	±0.30	±0.40	±0.50	±0.75	±0.90	±1.4	±0.5°	0.1	



SERIES No.
FACTORY CODE



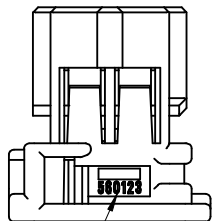
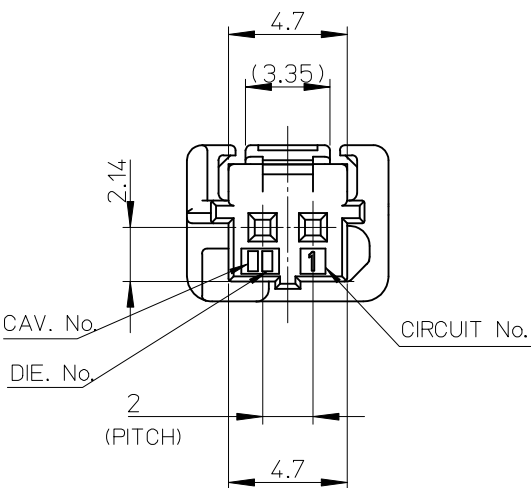
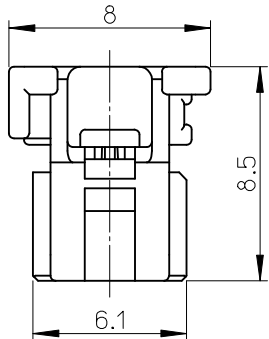
NOTES:

1. MATERIALS: POLYESTER (PBT), GLASS FILLED, UL94V-0
2. MATES WITH: 502352, 560020 SERIES
3. APPLICABLE TERMINAL : 560124-0101, 560124-0131
4. APPLICABLE ISL : 560125-0200
5. GENERAL TOLERANCES : SEE TABLE
6. EVL AND RoHS COMPLIANT
7. PRODUCT SPECIFICATION: PS-560123-001
8. PACKING SPECIFICATION: PK-560123-001

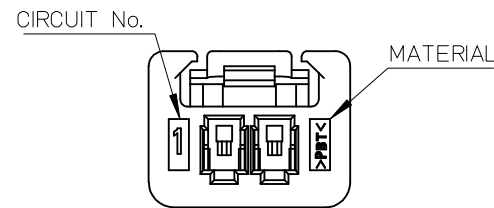
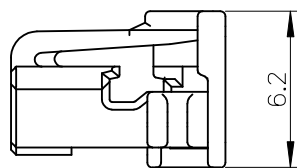
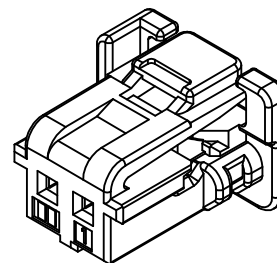
ORDER NO.	MATERIAL NO.	COLOR
560123-0200	5601230200	WHITE
560123-0201	5601230201	BLACK
560123-0202	5601230202	RED
560123-0204	5601230204	BLUE

ADDED OPTION EC NO: KTR2016-0056 DRWNS:JLEE06 2016/02/23 CHKD:BCY00N 2016/02/23 APPR:JYCH01 2016/02/25	QUALITY SYMBOLS ▽=0 ◻=0	GENERAL TOLERANCES (UNLESS SPECIFIED)		DIMENSION STYLE MM ONLY		SCALE	DESIGN UNITS	THIRD ANGLE PROJECTION
		mm	INCH	DRAWN BY	DATE	TITLE	METRIC	⊙ ◻
REV	DESCRIPTION	4 PLACES	± ---	± ---	YIBA EK	2014/07/03	NEW 2.0 PITCH W/B CONN. REC. 2WAY HSG DURA CLIK™ ISL SERIES MOLEX INCORPORATED	SHEET NO. 1 OF 1
		3 PLACES	± ---	± ---	CHECKED BY	DATE		
		2 PLACES	± ---	± ---	BCY00N	2014/07/03		
		1 PLACE	± ---	± ---	APPROVED BY	DATE		
		ANGULAR	± ---°		SRTAK	2014/08/26		
		DRAFT WHERE APPLICABLE MUST REMAIN WITHIN DIMENSIONS		SEE TABLE		DOCUMENT NO.	SD-560123-001	
				THIS DRAWING CONTAINS INFORMATION THAT IS PROPRIETARY TO MOLEX INCORPORATED AND SHOULD NOT BE USED WITHOUT WRITTEN PERMISSION				

GENERAL TOLERANCE										USED ON
10 MAX	30 MAX	50 MAX	70 MAX	100 MAX	120 MAX	250 MAX	250 OVR	ANGLE	ECCENT	
±0.15	±0.20	±0.30	±0.40	±0.50	±0.75	±0.90	±1.4	±0.5°	0.1	



SERIES No.
FACTORY CODE



NOTES:

1. MATERIALS: POLYESTER (PBT), GLASS FILLED, UL94V-0
2. MATES WITH: 502352, 560020 SERIES
3. APPLICABLE TERMINAL : 560124-0101, 560124-0131
4. APPLICABLE ISL : 560125-0200
5. GENERAL TOLERANCES : SEE TABLE
6. EVL AND RoHS COMPLIANT
7. PRODUCT SPECIFICATION: PS-560123-001
8. PACKING SPECIFICATION: PK-560123-001

ORDER NO.	MATERIAL NO.	COLOR
560123-0200	5601230200	WHITE
560123-0201	5601230201	BLACK
560123-0202	5601230202	RED
560123-0204	5601230204	BLUE

ADDED OPTION EC NO: KTR2016-0056 DRWNS:JLEE06 2016/02/23 CHKD:BCY00N 2016/02/23 APPR:JYCH01 2016/02/25	QUALITY SYMBOLS ▽=0 ◻=0	GENERAL TOLERANCES (UNLESS SPECIFIED)		DIMENSION STYLE MM ONLY		SCALE	DESIGN UNITS	THIRD ANGLE PROJECTION
		mm	INCH	DRAWN BY	DATE	TITLE	METRIC	⊙ ◻
REV	DESCRIPTION	4 PLACES	± ---	± ---	YIBAOK	2014/07/03	NEW 2.0 PITCH W/B CONN. REC. 2WAY HSG DURA CLIK™ ISL SERIES MOLEX INCORPORATED	SHEET NO. 1 OF 1
		3 PLACES	± ---	± ---	CHECKED BY	DATE		
		2 PLACES	± ---	± ---	BCY00N	2014/07/03		
		1 PLACE	± ---	± ---	APPROVED BY	DATE		
		ANGULAR ± ---°		SRTAK	2014/08/26			
DRAFT WHERE APPLICABLE MUST REMAIN WITHIN DIMENSIONS		SEE TABLE		MATERIAL NO.		DOCUMENT NO.	SD-560123-001	
SIZE A3		THIS DRAWING CONTAINS INFORMATION THAT IS PROPRIETARY TO MOLEX INCORPORATED AND SHOULD NOT BE USED WITHOUT WRITTEN PERMISSION						