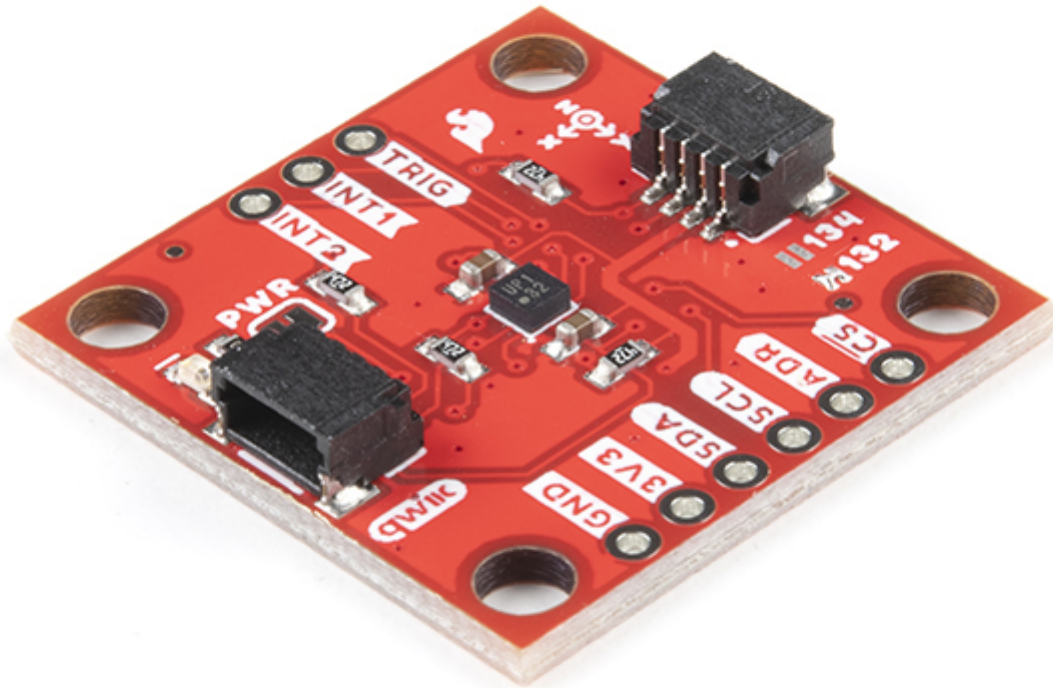


SparkFun Triple Axis Accelerometer Breakout - KX132 (Qwiic)



- Measurement Range: $\pm 2g$, $\pm 4g$, $\pm 8g$, $\pm 16g$ (User Selectable)
- High Resolution (8 or 16-bit)
- User-Configurable Output Data Rate (ODR) up to 25600Hz
- User-Configurable 3-stage Advanced Data Path featuring low-pass filter, low-pass/high-pass filter and RMS calculation engine
- Wide range of built-in sensing functions
 - Free Fall
 - Directional-Tap™ / Double-Tap™
 - Device Orientation & Activity Algorithms
- Low Noise: $130\mu g/\sqrt{Hz}$ (varies based on ODR, power mode & other settings)

- High Resolution Wake-Up & Back-to-Sleep Detection with configurable threshold as low as 3.9mg
- 512-byte FIFO buffer that continues recording data while being read
- Selectable Low-Power or High-Performance operating modes
- Low Power with Integrated Voltage Regulator
 - High Performance Operating Current Consumption (400Hz ODR + Wake-Up Detection): 148 μ A
 - Low Power Operating Current Consumption (0.781Hz ODR + Wake-Up Detection): 0.53 μ A
 - Standby Current Consumption: 0.5 μ A
- Self-Test Functionality
- Digital I²C up to 3.4MHz and Digital SPI up to 10MHz
- 2x Qwiic Connectors
- SPI available on PTH Header Pins
- I²C Address: 0x1E (0x1F alternate)