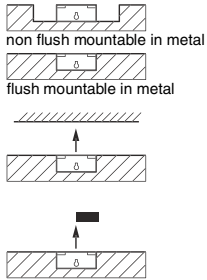


Osiprox Inductive Proximity Sensors



Osiconcept®
Offering simplicity through innovation

A single product that adapts to all metal environments

Accurate position detection via teach mode.



	Type E (26 x 26)	Type C (40 x 40)	Type D (80 x 80)	Ø 12
Nominal Sensing Distance S_n	15 mm	25 mm	60 mm	5 mm
Usable sensing dist. S (mm) shielded/non-shielded	0...10 / 0...15	0...15 / 0...25	0...40 / 0...60	0...3.4 / 0...5
Precision adjustment range (mm) shielded/non-shielded	5...10 / 5...15	8...15 / 8...25	20...40 / 20...60	1.7...3.4 / 1.7...5
Mounting in metal	shielded or non-shielded via Osiconcept teach mode			
Enclosure M (metal) P (plastic)	P	P	P	M
Temperature range °F (°C)	- 13...158 (- 25...70)	- 13...158 (- 25...70)	- 13...158 (- 25...70)	- 13...158 (- 25...70)
Degree of protection (conforming to IEC 60 529)	pre-cabled: IP68 (with connector: IP67)			

Sensors for DC applications --- (3-wire)

Connection: pre-cabled PvR (2 m)

Dimensions (mm) Ø x L or H x W x L		26 x 26 x 13	40 x 40 x 15	80 x 80 x 26	M12 x 54
3-wire	PNP	NO	XS8E1A1PAL2	XS8C1A1PAL2	XS8D1A1PAL2
	PNP	NC	XS8E1A1PBL2	XS8C1A1PBL2	XS8D1A1PBL2
	NPN	NO	XS8E1A1NAL2	XS8C1A1NAL2	XS8D1A1NAL2
	NPN	NC	XS8E1A1NBL2	XS8C1A1NBL2	XS8D1A1NBL2

Connection: M8 or M12 connector

3-wire	PNP	NO	XS8E1A1PAM8	XS8C1A1PAM8	XS8D1A1PAM12	XS612B2PAL01M12 (2)
	PNP	NC	XS8E1A1PBM8	XS8C1A1PBM8	XS8D1A1PBM12	XS612B2PBL01M12 (2)
	NPN	NO	XS8E1A1NAM8	XS8C1A1NAM8	XS8D1A1NAM12	XS612B2NAL01M12 (2)
	NPN	NC	XS8E1A1NBM8	XS8C1A1NBM8	XS8D1A1NBM12	XS612B2NBL01M12 (2)

Supply voltage limits min/max (V) including ripple	10...36	10...36	10...36	10...36
Switching capacity, max (mA)	100	200	200	200
Short-circuit protection (◆)	◆	◆	◆	◆
LED output state indication (✱) and power on LED (★)	✱/★	✱/★	✱/★	✱/★
Voltage drop, closed state (V) at I nominal	≤ 2	≤ 2	≤ 2	≤ 2
Switching frequency (Hz)	1000	1000	100	1000

Sensors for AC or DC applications $\sim / \text{---}$ (2-wire)

Connection: pre-cabled PvR (2 m)

Dimensions (mm) Ø x L or H x W x L		26 x 26 x 13	40 x 40 x 15	80 x 80 x 26	—
2-wire	AC/DC without short-circuit protection (1)	NO	XS8E1A1MAL2	XS8C1A1MAL2	XS8D1A1MAL2
		NC	XS8E1A1MBL2	XS8C1A1MBL2	XS8D1A1MBL2

Connection: 1/2" 20 UNF connector

2-wire	AC/DC without short-circuit protection (1)	NO	XS8E1A1MAL01U20	XS8C1A1MAL01U20	XS8D1A1MAU20	—
		NC	XS8E1A1MBL01U20	XS8C1A1MBL01U20	XS8D1A1MBU20	—
Supply voltage limits min/max (V) including ripple on DC	20...264	20...264	20...264	20...264		
Switching capacity, max (mA)	200	260	260	260		
LED output state indication (✱) and power on LED (★)	✱/★	✱/★	✱/★	✱/★		
Residual current, open state (mA)	≤ 1.5	≤ 1.5	≤ 1.5	≤ 1.5		
Voltage drop, closed state (V) at I nominal	≤ 5.5	≤ 5.5	≤ 5.5	≤ 5.5		
Switching frequency (Hz) AC / DC	50 / 1000	50 / 1000	50 / 1000	50 / 1000		

(1) It is necessary to place a 0.8 A quick-blow fuse in series with the load.

Accessories

For flat sensors, forms E, C and D				Mounting bracket with indexing pin for cylindrical sensors			
		straight	90°		M8	XSZB108	
	Type E	XSZBE00	XSZBE90		XSZBE10	M12	XSZB112
	Type C	XSZBC00	XSZBC90		XSZBC10	M18	XSZB118
	Type D	XSZBD00	—		XSZBD10	M30	XSZB130



Osiconcept®



Osiconcept®

Ø 18	Ø 30
10 mm	18 mm
0...7 / 0...10	0...12 / 0...18
3.5 ... 7 / 3.5...10	6...12 / 6...18
shielded or non-shielded via Osiconcept teach mode	
M	M
- 13...158 (- 25...70)	- 13...158 (- 25...70)
pre-cabled: IP68 (with connector: IP67)	

M18 x 67	M30 x 71
-	-
-	-
-	-
-	-

XS618B2PAL01M12 (2)	XS630B2PAL01M12 (2)
XS618B2PBL01M12 (2)	XS630B2PBL01M12 (2)
XS618B2NAL01M12 (2)	XS630B2NAL01M12 (2)
XS618B2NBL01M12 (2)	XS630B2NBL01M12 (2)
10...36	10...36
200	200
◆	◆
✱/★	✱/★
≤ 2	≤ 2
1000	1000

-	-
-	-
-	-

-	-
-	-
-	-
-	-
-	-
-	-
-	-
-	-
-	-



Ø 8	Ø 12	Ø 18	Ø 30
2.5 mm	4 mm	8 mm	15 mm
0...2	0...3.2	0...6.4	0...12
-	-	-	-
shielded	shielded	shielded	shielded
M	M	M	M
- 13...176 (- 25...70)	- 13...176 (- 25...70)	- 13...176 (- 25...70)	- 13...176 (- 25...70)
pre-cabled: IP68 (with connector: IP67)			

M8 x 50	M12 x 50	M18 x 60	M30 x 60
XS608B1PAL2	XS612B1PAL2	XS618B1PAL2	XS630B1PAL2
XS608B1PBL2	XS612B1PBL2	XS618B1PBL2	XS630B1PBL2
XS608B1NAL2	XS612B1NAL2	XS618B1NAL2	XS630B1NAL2
XS608B1NBL2	XS612B1NBL2	XS618B1NBL2	XS630B1NBL2

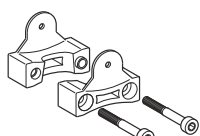
XS608B1PAM12	XS612B1PAM12	XS618B1PAM12	XS630B1PAM12
XS608B1PBM12	XS612B1PBM12	XS618B1PBM12	XS630B1PBM12
XS608B1NAM12	XS612B1NAM12	XS618B1NAM12	XS630B1NAM12
XS608B1NBM12	XS612B1NBM12	XS618B1NBM12	XS630B1NBM12
10...36	10...36	10...36	10...36
100	200	300	300
◆	◆	◆	◆
✱/-	✱/-	✱/-	✱/-
≤ 2	≤ 2	≤ 2	≤ 2
2500	2500	1000	500

	M12 x 50	M18 x 60	M30 x 60
-	XS612B1MAL2	XS618B1MAL2	XS630B1MAL2
-	XS612B1MBL2	XS618B1MBL2	XS630B1MBL2




	XS612B1MAU20	XS618B1MAU20	XS630B1MAU20
-	XS612B1MBU20	XS618B1MBU20	XS630B1MBU20
-	20...264	20...264	20...264
-	200	200	200
-	✱/-	✱/-	✱/-
-	≤ 1.5	≤ 1.5	≤ 1.5
-	≤ 5.5	≤ 5.5	≤ 5.5
-	25 / 4000	25 / 3000	25 / 3000

(2) Pigtail cable (L = 0.15 m) with end mounted remote control and M12 connector

For Osiconcept XS6 remote control



XSZBPM12

Plug-in female connectors, including pre-wired versions			
	 elbowed	 straight	 Snap-C
length 5 m w/o LED			
M8	XSZCS112	XSZCS101	-
M12	XSZCD112Y	XSZCD102Y	XSCC12FDM40V
U20	XSZCA111Y	XSZCA101Y	-