



har-port RJ45 coupler and accessories

**Advantages**

- Compact and well-shaped service interface in a timeless attractive design
- Easy mounting
- Transmission category 6, performance class E<sub>A</sub>, suitable for 1/10 Gigabit Ethernet
- Compact and robust design
- Practical accessories

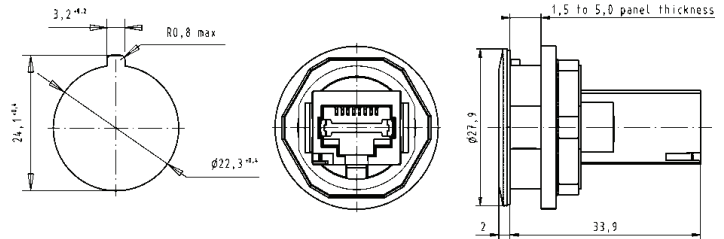
**Technical characteristics**

Number of ports	2x RJ45
Transmission performance	Category 6 / class E <sub>A</sub> acc. ISO/IEC 11 801:2002, EN 50 173-1
Transmission rate	10/100 Mbit/s and 1/10 Gbit/s
Shielding	Fully shielded, 360° shielding contact
Mounting	Screwable to cover plates
Degree of protection	IP 20
Mating cycles	min. 750
Temperature range	- 25 °C ... + 70 °C
Housing material	Polyamide

Identification	Part number	Drawing	Dimensions in mm
----------------	-------------	---------	------------------

har-port RJ45 Cat. 6 coupler

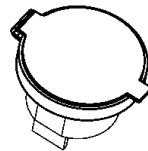
09 45 452 1560



**Accessories**

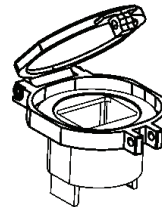
har-port protection cover IP 44

09 45 502 0000



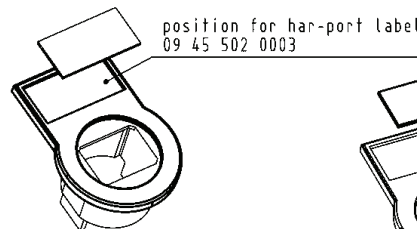
har-port sealing cover

09 45 502 0001



har-port label holder

09 45 502 0002



har-port label for label holder 09 45 502 0002

09 45 502 0003

