

DCM250 product information sheet



The DCM250 is a sturdy double TV ceiling mount with universal adapter that allows TVs or digital signage to be seen from multiple locations. Our professional-grade ceiling mounts provide single or back-to-back mounting options.

Product Benefits*

- Supports two TVs for back-to-back mounting
- Portrait or landscape orientation
- Includes universal adapter for greater VESA compatibility
- Tension adjustment for variable tilt or locking pin mechanism for precise positioning
- Integrated cable management routes cables through NPT pipe and ceiling plate
- Lift n' Lock™ for quick installation
- Includes 24" of 1.5" NPT
- Threaded bottom pipe for additional accessories
- Includes ceiling plate
- Anti-theft security feature
- Includes Grade 5 hardware kit
- NPT extension pipes available in 12", 18" and 24" lengths

Product Specifications*

Fits most: 32–65" TVs/displays
Supports up to: 250 lbs (113.4 kg)
Tilt: Up to +25°
VESA compliance: 200x100 to 600x400
Warranty: 5 years
Color: Black



The DCM250 is equipped with a pin tilt mechanism that tilts the TV at precise increments, making the mount well-suited for single or multiple TV installations.

*Subject to change

800.MOUNT.IT (800.668.6848)

Series



SCM125

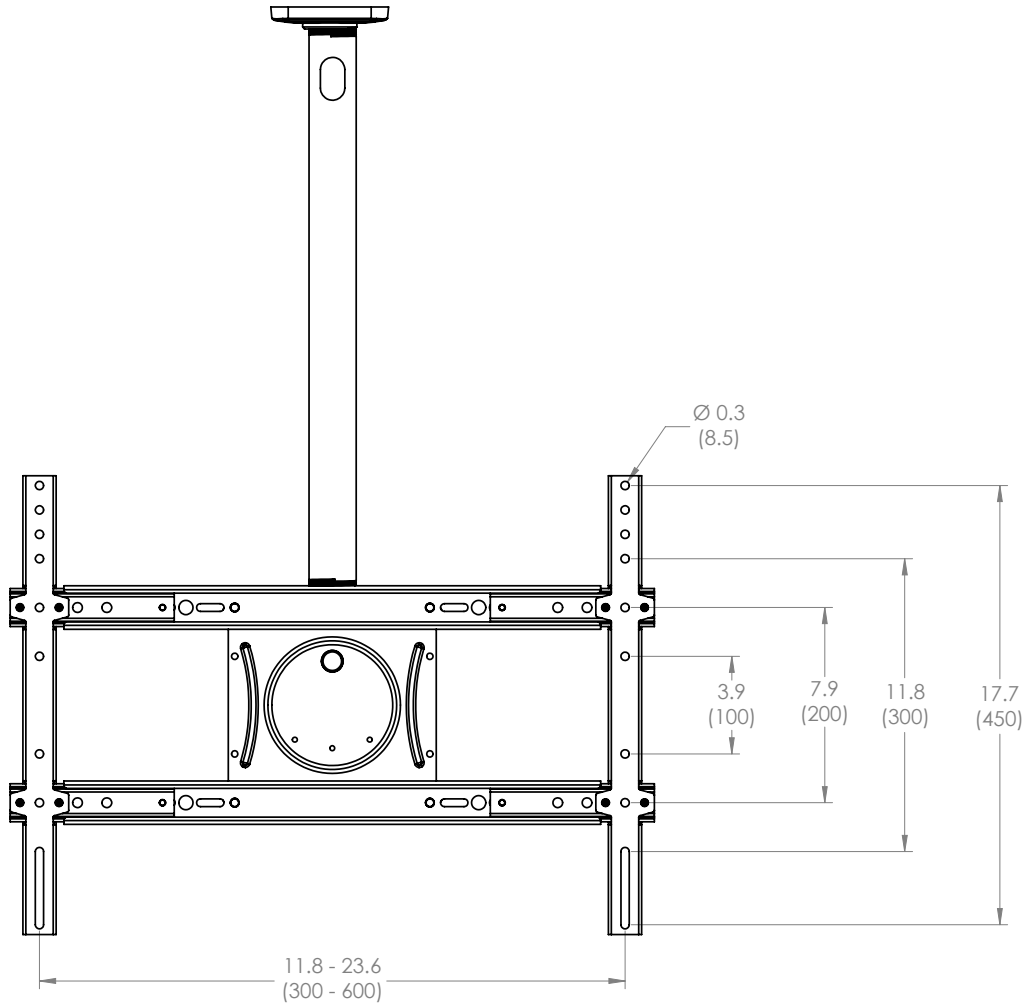


DCM250



09042013

DCM250 technical data sheet



inches (mm)

	Packaging UPC	MC UPC
Americas	698833022940	NA
International	698833022940	NA

	Dimensions WxDxH Inches (mm)	Wt lbs (kg)	Qty
Box	24.4 x 27 x 5.1 (620x687x130)	39 (17.7)	NA
MC	NA	NA	NA

Box Contents	Qty
Ceiling plate	1
NPT pipe	1
Tilt hanger	2
Universal adapter	2
VESA plate	2

Box Contents	Qty
Monitor kit	2
Ceiling kit	1
Instruction manual	1
Complete hardware kit	1

