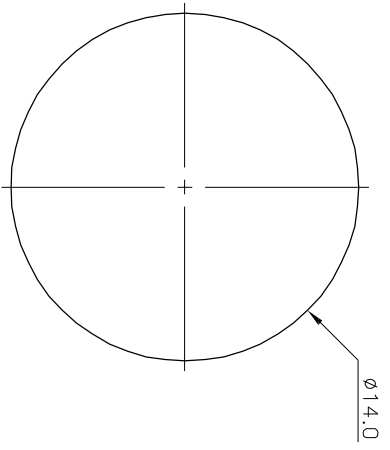
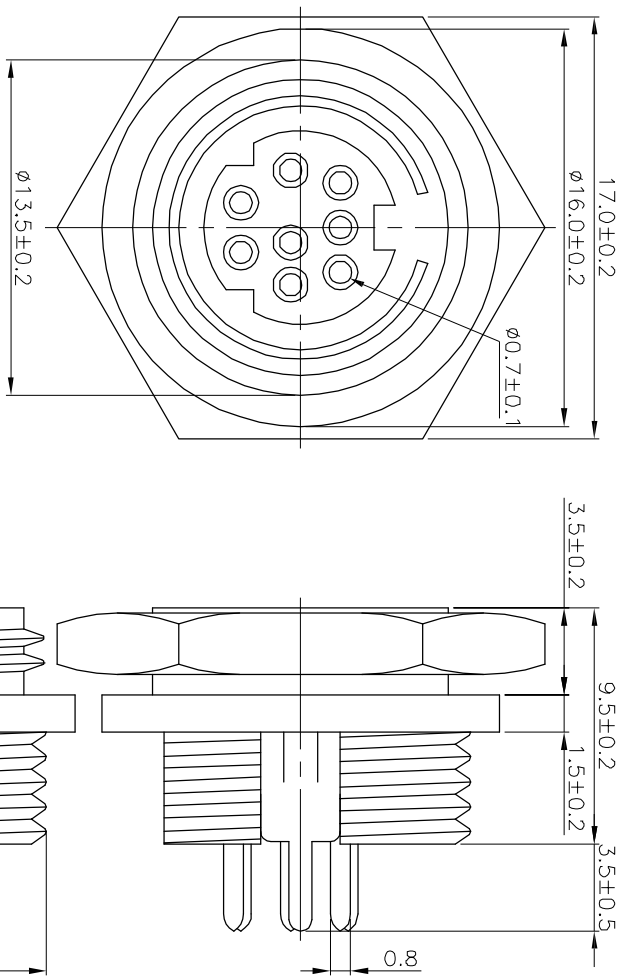


* REVISIONS				
LTR	DESCRIPTION	DATE	REVISED	APPROVED

RECOMMENDED PANEL CUTOUT



- SPECIFICATION :
- CURRENT CARRYING CAPACITY
 - AC : 100V 1A MAX.
 - DC : 12V 2A MAX.
 - CONTACT RESISTANCE : 30m OHM MAX.
 - INSULATION RESISTANCE : 50M OHM MIN. AT DC 250V.
 - VOLTAGE WITHSTANDANCE : AC 250V FOR ONE MINUTE.
 - INSERTION FORCE : 4.5 KG MAX.
 - WITHDRAWAL FORCE : 0.5 - 3.0 KG
 - THE OPERATING TEMPERATURE: -40°C ~ +85°C.
 - THE LIFE CYCLES: 1000 CYCLES.

T:1.6 Dimensions of PC board holes
Tolerance : ±0.05(Printed-top view)

ARRANGEMENT OF CONTACTS	NO. OF CONTACTS	MODEL NO.	not available	MDJ-101-4P	not available	MDJ-101-6P	not available	not available
	3							
	4							
	5							
	6							
	7							
	8							

LEAD FREE

3	GROUND CONTACT	1	C2680	t=0.4	Cu/Sn	PLATED
2	CONTACT FOOT	3~8	C5191	t=0.2	Ag	PLATED
1	HOUSING	1	PBT 4815		UL-94V0(BLACK)	
LTR	PART NAME	QTY	MATERIAL		REMARK	
DWN	LILY	DATE	2013.10.26	3RD ANGLE PROJECTION	NAME	S JACK
CHKD	ANDY	DATE	2013.10.26	UNIT: mm	CAT. NO.	MD-09027M-X
APVD	JON	DATE	2013.10.26		DWN.NO.	MDJ-101

UNLESS OTHERWISE SPECIFIED, TOLERANCE ON DECIMAL:±0.3

IDITECH CORPORATION

001