

# GN 147 | Connecting clamps

with mounting base, aluminium



- 1
- 2
- 3
- 4
- 5
- 6
- 7
- 8
- 9
- 10
- 11
- 12
- 13
- 14
- 15
- 16
- 17
- 18

## MATERIAL

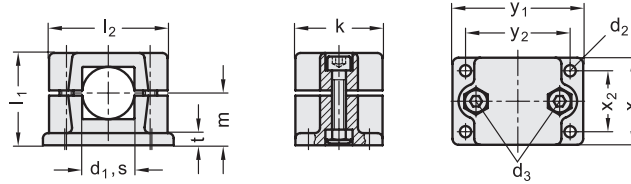
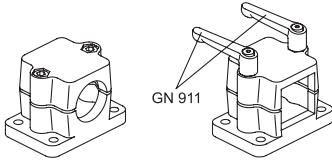
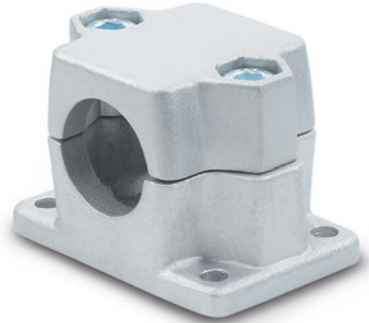
Aluminium, matte finish.  
AISI 304 stainless steel screws and nuts.

## STANDARD EXECUTIONS

- **GN 147-BL**: natural aluminium.
- **GN 147-SW**: aluminium, epoxy resin coating, RAL 9005 black colour.

## FEATURES AND APPLICATIONS

The assembly hole of GN 147 connecting clamps allows an excellent match with tubes GN 990 (see page 1778).  
The clamping screws  $d_3$  may be replaced by clamping kits GN 911 (see page 1782).



## GN 147-BL

Code	Description	d1 Hole	s Square hole	d2	d3	k	l1	l2	m	t	x1	x2	y1	y2	d3 Clamping kit	⚖
GN.47011	GN 147-B20-2-BL	20	-	6.5	M8	50	53	68	30	7	50	35	75	60	GN 911-M8-45	245
GN.47031	GN 147-B25-2-BL	25	-	6.5	M8	50	53	68	30	7	50	35	75	60	GN 911-M8-45	240
GN.47051	GN 147-B30-2-BL	30	-	6.5	M8	50	53	68	30	7	50	35	75	60	GN 911-M8-45	188
GN.47071	GN 147-B40-2-BL	40	-	11	M10	76	81.5	98	46.5	14	76	50	115	90	GN 911-M10-70	665
GN.47091	GN 147-B42-2-BL	42	-	11	M10	76	81.5	98	46.5	14	76	50	115	90	GN 911-M10-70	650
GN.47111	GN 147-B45-2-BL	45	-	11	M10	76	81.5	98	46.5	14	76	50	115	90	GN 911-M10-70	640
GN.47131	GN 147-B48-2-BL	48	-	11	M10	76	81.5	98	46.5	14	76	50	115	90	GN 911-M10-70	631
GN.47151	GN 147-B50-2-BL	50	-	11	M10	76	81.5	98	46.5	14	76	50	115	90	GN 911-M10-70	620
GN.47211	GN 147-V20-2-BL	-	20x20	6.5	M8	50	53	68	30	7	50	35	75	60	GN 911-M8-45	242
GN.47231	GN 147-V25-2-BL	-	25x25	6.5	M8	50	53	68	30	7	50	35	75	60	GN 911-M8-45	230
GN.47251	GN 147-V30-2-BL	-	30x30	6.5	M8	50	53	68	30	7	50	35	75	60	GN 911-M8-45	221
GN.47271	GN 147-V40-2-BL	-	40x40	11	M10	76	81.5	98	46.5	14	76	50	115	90	GN 911-M10-70	643
GN.47291	GN 147-V45-2-BL	-	45x45	11	M10	76	81.5	98	46.5	14	76	50	115	90	GN 911-M10-70	625
GN.47311	GN 147-V50-2-BL	-	50x50	11	M10	76	81.5	98	46.5	14	76	50	115	90	GN 911-M10-70	595

## GN 147-SW

Code	Description	d1 Hole	s Square hole	d2	d3	k	l1	l2	m	t	x1	x2	y1	y2	d3 Clamping kit	⚖
GN.47016	GN 147-B20-2-SW	20	-	6.5	M8	50	53	68	30	7	50	35	75	60	GN 911-M8-45	245
GN.47036	GN 147-B25-2-SW	25	-	6.5	M8	50	53	68	30	7	50	35	75	60	GN 911-M8-45	240
GN.47056	GN 147-B30-2-SW	30	-	6.5	M8	50	53	68	30	7	50	35	75	60	GN 911-M8-45	188
GN.47076	GN 147-B40-2-SW	40	-	11	M10	76	81.5	98	46.5	14	76	50	115	90	GN 911-M10-70	665
GN.47096	GN 147-B42-2-SW	42	-	11	M10	76	81.5	98	46.5	14	76	50	115	90	GN 911-M10-70	650
GN.47116	GN 147-B45-2-SW	45	-	11	M10	76	81.5	98	46.5	14	76	50	115	90	GN 911-M10-70	640
GN.47136	GN 147-B48-2-SW	48	-	11	M10	76	81.5	98	46.5	14	76	50	115	90	GN 911-M10-70	631
GN.47156	GN 147-B50-2-SW	50	-	11	M10	76	81.5	98	46.5	14	76	50	115	90	GN 911-M10-70	620
GN.47216	GN 147-V20-2-SW	-	20x20	6.5	M8	50	53	68	30	7	50	35	75	60	GN 911-M8-45	242
GN.47236	GN 147-V25-2-SW	-	25x25	6.5	M8	50	53	68	30	7	50	35	75	60	GN 911-M8-45	230
GN.47256	GN 147-V30-2-SW	-	30x30	6.5	M8	50	53	68	30	7	50	35	75	60	GN 911-M8-45	221
GN.47276	GN 147-V40-2-SW	-	40x40	11	M10	76	81.5	98	46.5	14	76	50	115	90	GN 911-M10-70	643
GN.47296	GN 147-V45-2-SW	-	45x45	11	M10	76	81.5	98	46.5	14	76	50	115	90	GN 911-M10-70	625
GN.47316	GN 147-V50-2-SW	-	50x50	11	M10	76	81.5	98	46.5	14	76	50	115	90	GN 911-M10-70	595

Connecting clamps