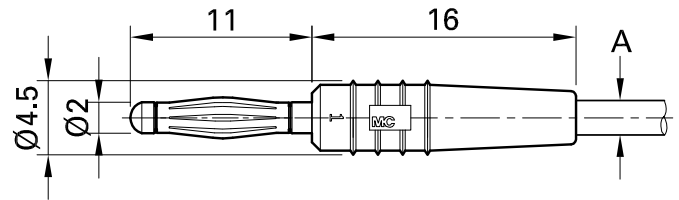
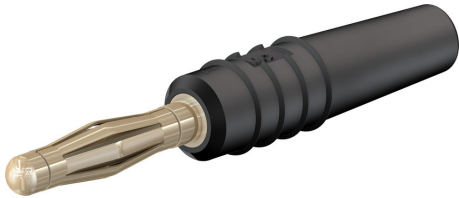


SLS205-L



Item number 22.2618-*

In-line, Ø 2 mm with spring-loaded MULTILAM for self-assembly of test leads. Solder connection.

Technical data	
Diameter of plug system	2 mm
Rated Values	30 VAC, 10 A / 60 VDC, 10 A
Surface treatment electrical contact	Au
Base material electrical contact	CuZn
Colours *	21 22 23 24 25 26 27 28 29
Test accessory acc. to	IEC EN 61010-031
Component parts	KT2-S; LS205-L
Material insulating part	PA