

Data sheet for SIMOTICS S-1FK2

Article No. : 1FK2210-4AC00-1MA0

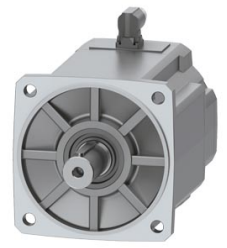


Figure similar

Client order no. :
Order no. :
Offer no. :
Remarks :

Item no. :
Consignment no. :
Project :

Basic motor data

| | |
|-------------------------|---|
| Motor type | Permanent-magnet synchronous motor, Natural cooling, IP64 |
| Motor type | Compact |
| Static torque | 40.00 Nm |
| Static current | 15.0 A |
| Maximum torque | 120.00 Nm |
| Maximum current | 55.0 A |
| Maximum speed | 3,300 rpm |
| Rotor moment of inertia | 117.0000 kgcm ² |
| Weight | 27.0 kg |

Rated data

SINAMICS S210, 3AC 400V

| | |
|---------------|-----------|
| Rated speed | 2,000 rpm |
| Rated torque | 30.50 Nm |
| Rated current | 11.8 A |
| Rated power | 6.40 kW |

Encoder system

| | |
|----------------|---|
| Encoder system | Encoder AM22DQC: Absolute encoder 22 bit + 12 bit multiturn |
|----------------|---|

Motor connection

| | |
|-----------------|--------------|
| Connection type | OCC for S210 |
| Connector size | M23 |

Mechanical data

| | |
|-------------------------------|--|
| Design acc. to Code I | IM B5 (IM V1, IM V3) |
| Vibration severity grade | Grade A |
| Shaft height | 100 |
| Flange size (AB) | 192 mm |
| Centering ring (N) | 180 mm |
| Hole circle (M) | 215 mm |
| Screw-on hole (S) | 14.0 mm |
| Overall length (LB) | 223 mm |
| Diameter of shaft (D) | 38 mm |
| Length of shaft (E) | 80 mm |
| Length of flange diagonal (P) | 244 mm |
| Shaft end | Fitted key |
| Color of the housing | Standard (Anthracite, similar to RAL 7016) |

