

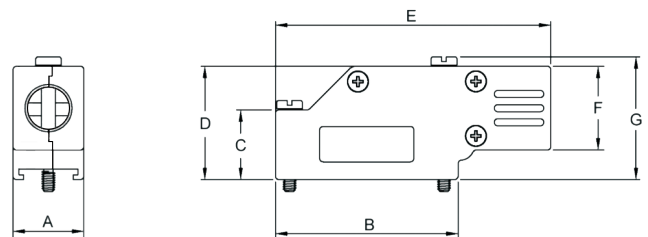
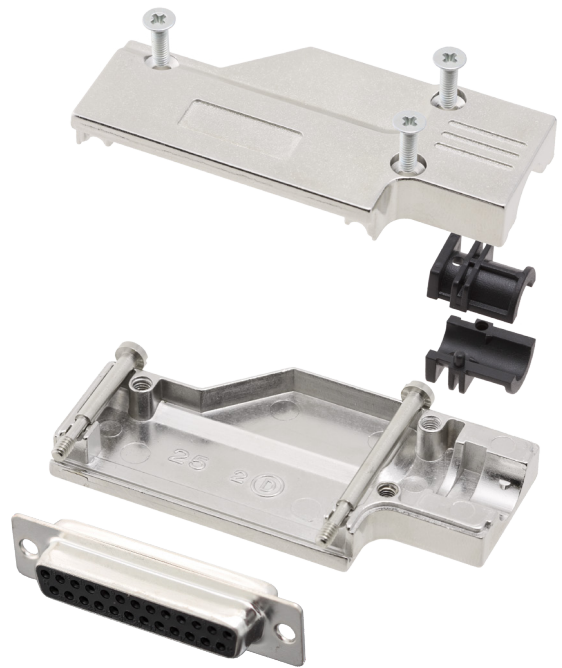
**TECHNICAL SPECIFICATIONS**

**D-Sub Hood:**

Material: Zinc, Nickel Plated  
 Operating Temperature: -40°C to +120°C  
 Cable Entry: 90° Side Entry  
 Jackscrews: UNC 4-40  
 Cable O.D: Up to 11,5mm  
 Type of grommets: 2 piece Plastic Ferrule Kit

**Female D-Sub Solder Cup:**

Insulator: PBT, Black, UL94 V-0  
 Shell: Steel, Tin Plated  
 Contact pins: Copper Alloy  
 Stamped & Formed Pins: Class 3, 100 inserts min.  
 Machined Contact Pins: Class 1, 500 inserts min.  
 Contact Plating: Selective Gold over Nickel  
 Operating Temperature: -55°C to +105°C  
 Withstanding voltage: 1000V for 1 minute  
 Insulator resistance: 1000MΩ min.



D-Sub-Hood

**Features:**

- Available in sizes 9-15-25-37  
 Other sizes on request
- Suitable for any common Sub-D connector
- Re-Openable

Size	A	B	C	D	E	F	G
9	15,0	31,0	15,0	24,0	51,0	18,0	26,5
15	15,3	39,2	15,0	24,0	59,0	18,0	26,5
25	16,0	54,0	23,0	34,5	73,0	24,5	37,0
37	16,0	70,5	23,0	34,5	89,5	24,5	37,0

**Ordering information:**

**Class 3 Sub-D Connector Kits (100 inserts min.)**

Size:	P/N - Kitted:	Product Code - FEMALE Conn. Kit
9-way	6355-0065-11	DCMR09-FK-DBS-K
15-way	6355-0065-12	DCMR15-FK-DBS-K
25-way	6355-0065-13	DCMR25-FK-DBS-K
37-way	6355-0065-14	DCMR37-FK-DBS-K

**Ordering information:**

**Class 1 Sub-D Connector Kits (500 inserts min.)**

Size:	P/N - Kitted:	Product Code - FEMALE Conn. Kit
9-way	6355-0065-31	DCMR09-FK-DMS-K
15-way	6355-0065-32	DCMR15-FK-DMS-K
25-way	6355-0065-33	DCMR25-FK-DMS-K
37-way	6355-0065-34	DCMR37-FK-DMS-K