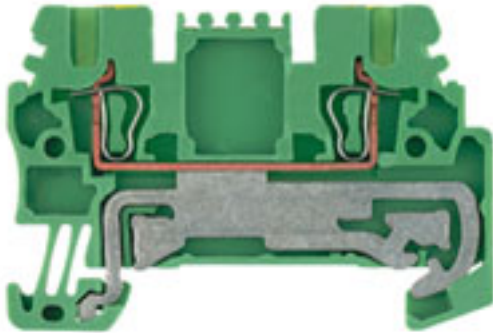


**Earth terminal  
ZPE 1.5**

**Weidmüller Interface GmbH & Co. KG**  
Klingenbergstraße 16  
D-32758 Detmold  
Germany  
Fon: +49 5231 14-0  
Fax: +49 5231 14-292083  
www.weidmueller.com



Terminal blocks in tension clamp system and the Z Series are specially customised to the customers' requirements. Less space, spacious labelling area, integrated test point, cross-connection functionality within the Z Series and other Weidmüller terminal lines. Z-Series terminals have a large clamping range and one or two cross-connection slots.

**General ordering data**

Type	ZPE 1.5
Order No.	<a href="#">1775510000</a>
Version	Earth terminal, PE terminal, Rated cross-section: 1.5 mm <sup>2</sup> , Tension clamp connection, Wemid, Green, Direct mounting
GTIN (EAN)	4032248181452
Qty.	100 pc(s).

## Data sheet

### Earth terminal ZPE 1.5

**Weidmüller Interface GmbH & Co. KG**  
 Klingenbergstraße 16  
 D-32758 Detmold  
 Germany  
 Fon: +49 5231 14-0  
 Fax: +49 5231 14-292083  
 www.weidmueller.com

## Technical data

### Dimensions and weights

Length	54.5 mm	Width	3.5 mm
Height	36.5 mm	Height of lowest version	37 mm
Net weight	8.06 g		

### Temperatures

Operating temperature		Storage temperature	
Continuous operating temp., min.	-50 °C	Continuous operating temp., max.	120 °C

### Rated data IECEx/ATEX

Certificate No. (ATEX)	KEMA01ATEX2 106U	ATEX certificate	KEMA01ATEX2 106U_d.pdf
ATEX certificate	KEMA01ATEX2 106U_e.pdf	Certificate No. (IECEX)	IECEXULD05.0009U
IEC Ex certificate	IECEXULD05.0009U_e.pdf	Wire cross section max. (ATEX)	1.5 mm <sup>2</sup>
Wire cross section max. (IECEX)	1.5 mm <sup>2</sup>	Voltage, cross-connection	CrossConnectionGuide.pdf
Operating temperature range	For operating temperature range see EC Design Test Certificate / IEC Ex-Certificate of Conformity	Marking EN 60079-7	
Marking ATEX Directive 94/9/EC	II 2 G D		Ex e II

### Additional technical data

Explosion-tested version	Yes	Installation advice	Direct mounting
Number of similar terminals	1	Open sides	right
Type of mounting	Snap-on	Version	Tension-clamp connection, With PE connection, One end without connector

### CSA ratings data

Certificate No. (CSA)	200039-1 152892	Wire cross section max. (CSA)	14 AWG
Wire cross section min. (CSA)	26 AWG		

### Clampable wires (additional connection)

Conductor cross-section, flexible plus plastic collar DIN 46228/1, further connection, min.	0.5 mm <sup>2</sup>	Conductor cross-section, flexible plus plastic collar DIN 46228/1, further connection, max.	1.5 mm <sup>2</sup>
---	---------------------	---	---------------------

**Earth terminal  
ZPE 1.5**

**Weidmüller Interface GmbH & Co. KG**  
 Klingenbergstraße 16  
 D-32758 Detmold  
 Germany  
 Fon: +49 5231 14-0  
 Fax: +49 5231 14-292083  
 www.weidmueller.com

**Technical data****Clampable wires (rated connection)**

Type of connection	Tension clamp connection	Stripping length	10 mm
Blade size	0.4 x 2.0 mm	Connection direction	top
Number of connections	2	Clamping range, rated connection, min.	0.05 mm <sup>2</sup>
Clamping range, rated connection, max.	1.5 mm <sup>2</sup>	Gauge to IEC 60947-1	B1
Wire connection cross section, solid core, max. rated connection	0.5 mm <sup>2</sup>	Wire connection cross section, solid core max. rated connection	1.5 mm <sup>2</sup>
Wire connection cross section, finely stranded, max.	1.5 mm <sup>2</sup>	Wire connection cross-section, finely stranded, min.	0.5 mm <sup>2</sup>
Wire connection cross section, finely stranded with wire-end ferrules DIN 46228/1, rated connection, min.	0.5 mm <sup>2</sup>	Wire connection cross section, finely stranded with wire-end ferrules DIN 46228/1, rated connection, max.	1.5 mm <sup>2</sup>
Cross-section for connected conductor, finely stranded with wire-end ferrules and plastic collars DIN 46228/4, rated connection, min.	0.5 mm <sup>2</sup>	Wire connection cross-section, finely stranded with wire-end ferrules and plastic collars DIN 46228/4, rated connection, max.	1.5 mm <sup>2</sup>
Twin wire-end ferrules, min.	0.5 mm <sup>2</sup>	Twin wire-end ferrules, max.	0.75 mm <sup>2</sup>
Wire connection cross section AWG, min.	AWG 30	Wire connection cross section AWG, max.	AWG 16

**Rated data**

Rated cross-section	1.5 mm <sup>2</sup>	Rated voltage to adjoining terminal	500 V
Rated impulse withstand voltage to adjacent terminal	6 kV	Standards	IEC 60947-7-2
Pollution severity	3		

**UL ratings data**

Certificate No. (UR)	E60693	Conductor size Factory wiring max. (UR)	14 AWG
Conductor size Factory wiring min. (UR)	26 AWG	Conductor size Field wiring max. (UR)	14 AWG

**Material data**

Insulating material	Wemid	Material	Wemid
Colour	Yellow, Green	UL 94 flammability rating	V-0

**System specifications**

Product family	Earth terminal	Type of connection	Tension clamp connection
Connection direction	top	Number of levels	1
Number of connections	2	No. of clamping points per level	2
Levels cross-connected internally	No	Mounting rail	TS 35
End cover plate required	Yes		

**Classifications**

ETIM 3.0	EC000901	UNSPSC	30-21-18-11
eClass 5.1	27-14-03-05	eClass 6.2	27-14-03-05
eClass 7.1	27-14-03-05		

**Data sheet**

**Earth terminal  
ZPE 1.5**

**Weidmüller Interface GmbH & Co. KG**  
Klingenbergstraße 16  
D-32758 Detmold  
Germany  
Fon: +49 5231 14-0  
Fax: +49 5231 14-292083  
www.weidmueller.com

**Technical data**

**Approvals**

Approvals



ROHS

Conform

**Data sheet**

**Earth terminal  
ZPE 1.5**

**Weidmüller Interface GmbH & Co. KG**  
 Klingenbergstraße 16  
 D-32758 Detmold  
 Germany  
 Fon: +49 5231 14-0  
 Fax: +49 5231 14-292083  
 www.weidmueller.com

**Accessories**

**Slotted screwdriver**

Slotted screwdriver with rounded blade SD DIN 5265, ISO 2380/2, output to DIN 5264, ISO 2380/1. ChromTop tip, SoftFinish grip



**General ordering data**

Type	Order No.	Version	GTIN (EAN)	Qty.
SDS 0.4X2.0X60	<a href="#">9037160000</a>	Screwdriver, Blade width (B): 2 mm, Blade length: 60 mm, Blade thickness (A): 0.4 mm	4032248171613	1 pc(s).

**Blank**



WS markers are the perfect match for the W-series connectors. Thanks to their system compatibility, the WS tags can also be used with the I-series and the Z-series. The large marking surfaces do not only permit long character strings but also multi-line text. WS markers are ideal for labels with long, customised character strings. Thanks to the proven MultiCard format, printing with laser printer, PrintJet ADVANCED, plotter or MC-Mobilo is possible.

- Can be fitted in strips or individually
- Markers in proven MultiCard format

**General ordering data**

Type	Order No.	Version	GTIN (EAN)	Qty.
WS 12/3.5 MC NE WS	<a href="#">1778270000</a>	Terminal markers, MultiCard, 12 x 3.5 mm, Polyamide 66, Colour: White	4032248161041	600 pc(s).

**Earth terminal  
ZPE 1.5**

**Weidmüller Interface GmbH & Co. KG**  
 Klingenbergstraße 16  
 D-32758 Detmold  
 Germany  
 Fon: +49 5231 14-0  
 Fax: +49 5231 14-292083  
 www.weidmueller.com

**Accessories**
**ZAP/TW ZDU 1.5/2AN**


Weidmüller offers users of modular terminals of the Z-Series a comprehensive range of accessories that render possible appropriate solutions for all - even non-standard - tasks.

The accessories must comply with the same quality standards as the modular terminals themselves.

**General ordering data**

Type	Order No.	Version	GTIN (EAN)	Qty.
ZAP/TW	<a href="#">1776030000</a>	Z-series, End plate, Partition	4032248188116	20 pc(s).
ZDU1.5/2AN		plate		
ZAP/TW	<a href="#">1776040000</a>	Z-series, End plate, Partition	4032248188123	20 pc(s).
ZDU1.5/2AN		plate		
BL				

**ZRH 1.5 S/2**


Weidmüller offers users of modular terminals of the Z-Series a comprehensive range of accessories that render possible appropriate solutions for all - even non-standard - tasks.

The accessories must comply with the same quality standards as the modular terminals themselves.

**General ordering data**

Type	Order No.	Version	GTIN (EAN)	Qty.
ZRH 1.5S/2	<a href="#">1781960000</a>	Accessories, Reducing sleeve	4032248239146	500 pc(s).

**Earth terminal  
ZPE 1.5**

**Weidmüller Interface GmbH & Co. KG**  
 Klingenbergstraße 16  
 D-32758 Detmold  
 Germany  
 Fon: +49 5231 14-0  
 Fax: +49 5231 14-292083  
 www.weidmueller.com

**Accessories**

**ZTA 5**



Weidmüller offers users of modular terminals of the Z-Series a comprehensive range of accessories that render possible appropriate solutions for all - even non-standard - tasks.

The accessories must comply with the same quality standards as the modular terminals themselves.

**General ordering data**

Type	Order No.	Version	GTIN (EAN)	Qty.
ZTA 5	<a href="#">1776210000</a>	Test adapter, Rated control	4032248190676	25 pc(s).
		voltage:		
ZTA 5/ZA	<a href="#">1776220000</a>	Test adapter, Rated control	4032248190683	25 pc(s).
		voltage:		

**Blank**



The dekafix (DEK) marker is the universal marker for all conductor and plug-in connectors as well as for electronic sub-assemblies. The system is ideal for short number sequences and covers a large range of ready-printed markers.

Strips for fast installation in one work step. The printing is easy to read, rich in contrast, and is available in five widths.

- Large range of ready-to-use markers
- Strips for fast installation
- Connector markers, suitable for all Weidmüller cable connectors
- Available as blank cards, MultiCard or as cards with standard printing

**General ordering data**

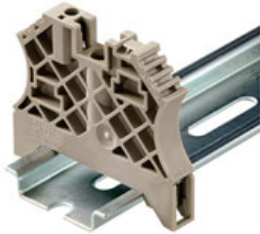
Type	Order No.	Version	GTIN (EAN)	Qty.
DEK 5/3.5 MC	<a href="#">1755270000</a>	Terminal markers,	4032248017348	500 pc(s).
NE WS		MultiCard, 5 x 3.5 mm, Polyamide 66, Colour: White		

**Earth terminal  
ZPE 1.5**

**Weidmüller Interface GmbH & Co. KG**  
 Klingenbergstraße 16  
 D-32758 Detmold  
 Germany  
 Fon: +49 5231 14-0  
 Fax: +49 5231 14-292083  
 www.weidmueller.com

**Accessories**

**for TS 35 terminal rail**



Weidmüller's range of products includes end brackets that guarantee a permanent, reliable mounting on the terminal rail and prevent sliding. Versions with and without screws are available. The end brackets include marking options, also for group markers, and also a test plug holder.

**General ordering data**

Type	Order No.	Version	GTIN (EAN)	Qty.
ZEW 35/2	<a href="#">8630740000</a>	Accessories, End bracket	4032248348916	20 pc(s).
WEW 35/2	<a href="#">1061200000</a>	Accessories, End bracket	4008190030230	100 pc(s).
ZEW 35	<a href="#">9540000000</a>	Accessories, End bracket	4008190956264	20 pc(s).
WEW 35/1	<a href="#">1059000000</a>	Accessories, End bracket	4008190172282	50 pc(s).

**Custom printing**



The dekafix (DEK) marker is the universal marker for all conductor and plug-in connectors as well as for electronic sub-assemblies. The system is ideal for short number sequences and covers a large range of ready-printed markers.

Strips for fast installation in one work step. The printing is easy to read, rich in contrast, and is available in five widths.

- Large range of ready-to-use markers
- Strips for fast installation
- Connector markers, suitable for all Weidmüller cable connectors
- Available as blank cards, MultiCard or as cards with standard printing

**General ordering data**

Type	Order No.	Version	GTIN (EAN)	Qty.
DEK 5/3.5 MC SDR	<a href="#">1767730000</a>	Terminal markers, MultiCard, 5 x 3.5 mm, Polyamide 66, Colour: To customer specification	4032248102532	100 pc(s).



**Earth terminal  
ZPE 1.5**

**Weidmüller Interface GmbH & Co. KG**  
Klingenbergstraße 16  
D-32758 Detmold  
Germany  
Fon: +49 5231 14-0  
Fax: +49 5231 14-292083  
www.weidmueller.com

**Accessories****ZRH 1.5 S/1**

Weidmüller offers users of modular terminals of the Z-Series a comprehensive range of accessories that render possible appropriate solutions for all - even non-standard - tasks.

The accessories must comply with the same quality standards as the modular terminals themselves.

**General ordering data**

Type	Order No.	Version	GTIN (EAN)	Qty.
ZRH 1.5S/1	<a href="#">1781950000</a>	Accessories, Reducing sleeve	4032248199525	500 pc(s).