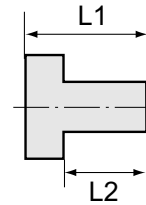




251.02-ES

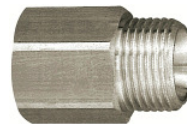


Reduziernippel, kurze Ausführung

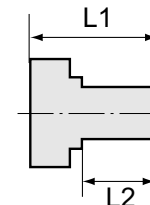
| Artikel Nr. | Ident Nr. | Außengewinde | Innengewinde | L1 mm | L2 mm | SW mm |
|-------------|-----------|--------------|--------------|-------|-------|-------|
| 251.00-ES | 111620 | G 1/8 | M5 | 11,0 | 7,0 | 14 |
| 251.00/S-ES | 111621 | G 1/4 | M5 | 14,0 | 10,0 | 17 |
| 251.01-ES | 111622 | G 1/4 | G 1/8 | 13,0 | 8,0 | 17 |
| 251.06-ES | 111623 | G 3/8 | G 1/8 | 13,0 | 9,5 | 19 |
| 251.02-ES | 111624 | G 3/8 | G 1/4 | 13,0 | 9,5 | 19 |
| 251.08-ES | 111625 | G 1/2 | G 1/8 | 18,0 | 12,0 | 24 |
| 251.07-ES | 111626 | G 1/2 | G 1/4 | 15,5 | 11,5 | 22 |
| 251.03-ES | 111627 | G 1/2 | G 3/8 | 15,5 | 11,5 | 22 |
| 251.09-ES | 111628 | G 3/4 | G 3/8 | 18,0 | 12,0 | 32 |
| 251.04-ES | 111629 | G 3/4 | G 1/2 | 21,0 | 14,0 | 32 |
| 251.10-ES | 111630 | G 1 | G 1/2 | 24,0 | 16,0 | 36 |
| 251.05-ES | 111631 | G 1 | G 3/4 | 18,0 | 12,0 | 36 |



252.10-ES



252.16-ES



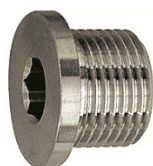
Reduziernippel, lange Ausführung

| Artikel Nr. | Ident Nr. | Außengewinde | Innengewinde | L1 mm | L2 mm | SW mm |
|-------------|-----------|--------------|--------------|-------|-------|-------|
| 252.08/1-ES | 111632 | M5 | M5 | 16,0 | 5,5 | 10 |
| 252.08/2-ES | 111633 | M5 | G 1/8 | 17,0 | 5,0 | 14 |
| 252.11-ES | 111634 | G 1/8 | G 1/8 | 23,0 | 8,0 | 14 |
| 252.08-ES | 111635 | G 1/8 | G 1/4 | 26,0 | 10,0 | 17 |
| 252.12-ES | 111636 | G 1/4 | G 1/8 | 28,0 | 10,0 | 17 |
| 252.13-ES | 111637 | G 1/4 | G 1/4 | 28,0 | 10,0 | 17 |
| 252.09-ES | 111638 | G 1/4 | G 3/8 | 26,0 | 10,0 | 19 |
| 252.14-ES | 111639 | G 3/8 | G 1/4 | 29,0 | 10,0 | 19 |
| 252.15-ES | 111640 | G 3/8 | G 3/8 | 29,0 | 10,0 | 19 |
| 252.10-ES | 111641 | G 3/8 | G 1/2 | 27,0 | 12,0 | 24 |
| 252.16-ES | 111642 | G 1/2 | G 3/8 | 34,0 | 12,0 | 24 |
| 252.17-ES | 111643 | G 1/2 | G 1/2 | 34,0 | 12,0 | 24 |
| 252.18-ES | 111644 | G 1/2 | G 3/4 | 38,0 | 13,0 | 32 |

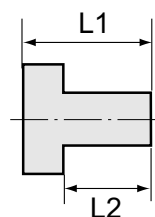
Standardverschraubungen

Edelstahl 1.4571

Artikel Nr. 251.00-ES bis 252.36-ES



252.92-ES



Verschlusschrauben mit Innensechskant und Bund

| Artikel Nr. | Ident Nr. | Gewinde | L1 mm | L2 mm | SW mm |
|-------------|-----------|---------|----------|----------|----------|
| 252.91-ES | 111645 | G 1/8 | 11,0 | 8,0 | 5 |
| 252.92-ES | 111646 | G 1/4 | 13,0 | 10,0 | 6 |
| 252.93-ES | 111647 | G 3/8 | 15,0 | 12,0 | 8 |
| 252.94-ES | 111648 | G 1/2 | 18,0 | 14,0 | 10 |
| 252.94-2ES | 111649 | G 3/4 | 20,0 | 16,0 | 12 |
| 252.94-3ES | 111650 | G 1 | 21,0 | 16,0 | 17 |



252.102-ES

Verschlusschrauben mit Innensechskant, ohne Bund

| Artikel Nr. | Ident Nr. | Gewinde | L1 mm | L2 mm | SW mm |
|-------------|-----------|---------|----------|----------|----------|
| 252.101-ES | 111651 | G 1/8 | 8,0 | - | 5 |
| 252.102-ES | 111652 | G 1/4 | 10,0 | - | 6 |
| 252.103-ES | 111653 | G 3/8 | 12,5 | - | 8 |
| 252.104-ES | 111654 | G 1/2 | 14,0 | - | 10 |



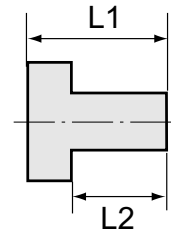
253.102-ES

Verschlusschrauben mit Innensechskant, ohne Bund

| Artikel Nr. | Ident Nr. | Gewinde | L1 mm | L2 mm | SW mm |
|-------------|-----------|---------|----------|----------|----------|
| 253.101-ES | 111655 | R 1/8 | 8,0 | - | 5 |
| 253.102-ES | 111656 | R 1/4 | 10,0 | - | 7 |
| 253.103-ES | 111657 | R 3/8 | 10,0 | - | 8 |
| 253.104-ES | 111658 | R 1/2 | 10,0 | - | 10 |
| 253.105-ES | 111659 | R 3/4 | 12,0 | - | 12 |
| 253.106-ES | 111660 | R 1 | 12,0 | - | 17 |

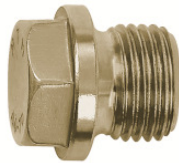


252.96-ES

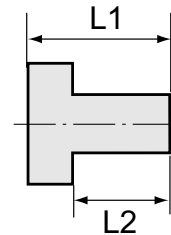


Verschlusschrauben mit Außensechskant

| Artikel Nr. | Ident Nr. | Gewinde | L1 mm | L2 mm | SW mm |
|-------------|-----------|---------|----------|----------|----------|
| 252.95-ES | 111661 | G 1/8 | 11,0 | 6,0 | 13 |
| 252.96-ES | 111662 | G 1/4 | 13,0 | 8,0 | 17 |
| 252.97-ES | 111663 | G 3/8 | 14,0 | 8,0 | 19 |
| 252.98-ES | 111664 | G 1/2 | 16,0 | 10,0 | 24 |
| 252.99-ES | 111665 | G 3/4 | 16,0 | 11,0 | 30 |
| 252.100-ES | 111666 | G 1 | 19,0 | 13,0 | 38 |

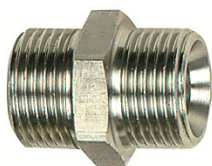


252.112-ES

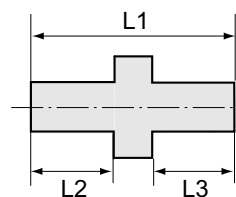


Verschlusschrauben mit Außensechskant und Bund

| Artikel Nr. | Ident Nr. | Gewinde | L1 mm | L2 mm | SW mm |
|-------------|-----------|---------|----------|----------|----------|
| 252.110-ES | 111667 | G 1/8 | 17,0 | 8,0 | 10 |
| 252.111-ES | 111668 | G 1/4 | 21,0 | 12,0 | 13 |
| 252.112-ES | 111669 | G 3/8 | 21,0 | 12,0 | 17 |
| 252.113-ES | 111670 | G 1/2 | 26,0 | 14,0 | 19 |
| 252.114-ES | 111671 | G 3/4 | 30,0 | 16,0 | 24 |
| 252.115-ES | 111672 | G 1 | 32,0 | 16,0 | 27 |

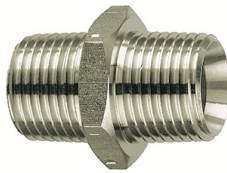


252.05-ES

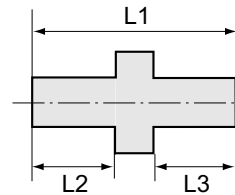


Doppelgewindenippel, Außengewinde zylindrisch

| Artikel Nr. | Ident Nr. | Gewinde 1 | Gewinde 2 | L1 mm | L2 mm | L3 mm | SW mm |
|-------------|-----------|-----------|-----------|----------|----------|----------|----------|
| 252 C-ES | 111673 | M 5 | M 5 | 13,0 | 5,0 | 5,0 | 7 |
| 252 D-ES | 111674 | M 5 | G 1/8 | 17,0 | 5,0 | 7,0 | 14 |
| 252 E-ES | 111675 | M 5 | G 1/4 | 21,0 | 7,0 | 9,0 | 17 |
| 252 A-ES | 111676 | G 1/8 | G 1/8 | 21,0 | 8,0 | 8,0 | 14 |
| 252 B-ES | 111677 | G 1/4 | G 1/8 | 22,0 | 9,0 | 8,0 | 17 |
| 252 B/1-ES | 111678 | G 1/8 | G 3/8 | 25,0 | 9,0 | 11,0 | 19 |
| 252.01-ES | 111679 | G 1/4 | G 1/4 | 23,0 | 9,0 | 9,0 | 17 |
| 252.02-ES | 111680 | G 1/4 | G 3/8 | 24,0 | 9,0 | 10,0 | 19 |
| 252.02/S-ES | 111681 | G 1/4 | G 1/2 | 29,0 | 11,0 | 12,0 | 24 |
| 252.03-ES | 111682 | G 3/8 | G 3/8 | 25,0 | 10,0 | 10,0 | 19 |
| 252.04-ES | 111683 | G 3/8 | G 1/2 | 27,0 | 10,0 | 12,0 | 24 |
| 252.04/S-ES | 111684 | G 3/8 | G 3/4 | 36,0 | 12,0 | 16,0 | 32 |
| 252.05-ES | 111685 | G 1/2 | G 1/2 | 29,0 | 12,0 | 12,0 | 24 |
| 252.06-ES | 111686 | G 3/4 | G 1/2 | 33,0 | 12,0 | 12,0 | 32 |
| 252.06/S-ES | 111687 | G 1/2 | G 1 | 40,0 | 16,0 | 16,0 | 36 |
| 252.07-ES | 111688 | G 3/4 | G 3/4 | 33,0 | 12,0 | 12,0 | 32 |
| 252.07/1-ES | 111689 | G 3/4 | G 1 | 40,0 | 16,0 | 16,0 | 36 |
| 252.07/2-ES | 111690 | G 1 | G 1 | 42,5 | 17,0 | 17,0 | 36 |



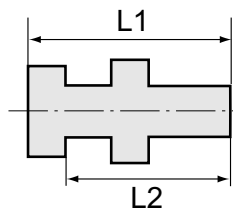
252.303-ES


Doppelgewindenippel, Außengewinde konisch, nach ISO 7-1

| Artikel Nr. | Ident Nr. | Gewinde 1 | Gewinde 2 | L1 mm | L2 mm | L3 mm | SW mm |
|--------------|-----------|-----------|-----------|----------|----------|----------|----------|
| 252.400-ES | 125690 | R 1/8 | R 1/8 | 21,0 | 8,0 | 8,0 | 10 |
| 252.400/2-ES | 125691 | R 1/8 | R 1/4 | 24,0 | 8,0 | 11,0 | 14 |
| 252.400/3-ES | 125692 | R 1/8 | R 3/8 | 24,0 | 8,0 | 11,0 | 17 |
| 252.301-ES | 111694 | R 1/4 | R 1/4 | 30,0 | 12,0 | 12,0 | 14 |
| 252.401/2-ES | 125693 | R 1/4 | R 3/8 | 27,0 | 11,0 | 11,0 | 17 |
| 252.401/4-ES | 125694 | R 1/4 | R 1/2 | 31,0 | 11,0 | 14,0 | 22 |
| 252.302-ES | 111697 | R 3/8 | R 3/8 | 38,0 | 16,0 | 16,0 | 22 |
| 252.402/2-ES | 125695 | R 3/8 | R 1/2 | 31,0 | 11,0 | 14,0 | 22 |
| 252.402/4-ES | 125696 | R 3/8 | R 1 | 35,0 | 11,0 | 18,0 | 36 |
| 252.303-ES | 111700 | R 1/2 | R 1/2 | 38,0 | 16,0 | 16,0 | 27 |
| 252.403/2-ES | 125697 | R 1/2 | R 3/4 | 36,0 | 14,0 | 16,0 | 28 |
| 252.403/3-ES | 125698 | R 1/2 | R 1 | 38,0 | 14,0 | 18,0 | 36 |
| 252.304-ES | 111703 | R 3/4 | R 3/4 | 51,5 | 22,0 | 22,0 | 32 |
| 252.404/2-ES | 125699 | R 3/4 | R 1 | 40,0 | 16,0 | 18,0 | 36 |
| 252.404/3-ES | 125700 | R 3/4 | R 1 1/4 | 43,0 | 16,0 | 20,0 | 42 |
| 252.404/4-ES | 125701 | R 3/4 | R 1 1/2 | 44,0 | 16,0 | 20,0 | 50 |
| 252.305-ES | 111707 | R 1 | R 1 | 47,0 | 19,5 | 19,5 | 41 |
| 252.405/2-ES | 125702 | R 1 | R 1 1/4 | 45,0 | 18,0 | 20,0 | 42 |
| 252.405/3-ES | 125703 | R 1 | R 1 1/2 | 46,0 | 18,0 | 20,0 | 50 |
| 252.405/4-ES | 125704 | R 1 | R 2 | 50,0 | 18,0 | 24,0 | 62 |
| 252.406-ES | 125705 | R 1 1/4 | R 1 1/4 | 47,0 | 20,0 | 20,0 | 42 |
| 252.406/2-ES | 125706 | R 1 1/4 | R 1 1/2 | 48,0 | 20,0 | 20,0 | 50 |
| 252.406/3-ES | 125707 | R 1 1/4 | R 2 | 53,0 | 20,0 | 25,0 | 62 |
| 252.407-ES | 125708 | R 1 1/2 | R 1 1/2 | 48,0 | 20,0 | 20,0 | 50 |
| 252.407/2-ES | 125709 | R 1 1/2 | R 2 | 53,0 | 20,0 | 25,0 | 60 |
| 252.408-ES | 125710 | R 2 | R 2 | 58,0 | 25,0 | 25,0 | 60 |
| 252.408/2-ES | 125711 | R 2 | R 2 1/2 | 63,0 | 25,0 | 28,0 | 78 |
| 252.408/3-ES | 125712 | R 2 | R 3 | 66,0 | 25,0 | 31,0 | 90 |
| 252.409-ES | 125713 | R 2 1/2 | R 2 1/2 | 66,0 | 28,0 | 28,0 | 78 |
| 252.409/2-ES | 125714 | R 2 1/2 | R 3 | 69,0 | 28,0 | 31,0 | 90 |
| 252.410-ES | 125715 | R 3 | R 3 | 72,0 | 31,0 | 31,0 | 90 |



252.42-ES



Schottverschraubungen

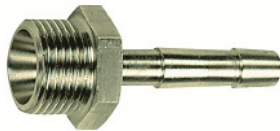
| Artikel Nr. | Ident Nr. | Außengewinde | Innengewinde | L1 mm | L2 mm | SW 1 mm | SW 2 mm |
|-------------|-----------|--------------|--------------|----------|----------|------------|------------|
| 252.41-ES | 111722 | G 1/4 | G 1/8 | 18,0 | 14,0 | 17 | 17 |
| 252.42-ES | 111723 | G 3/8 | G 1/4 | 22,0 | 17,0 | 19 | 24 |
| 252.43-ES | 111724 | G 1/2 | G 3/8 | 27,0 | 21,0 | 24 | 24 |



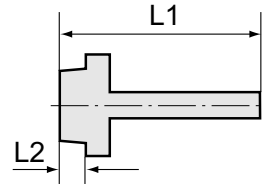
234 B-ES

Sechskant-Überwurfmuttern

| Artikel Nr. | Ident Nr. | Gewinde | für Tüllengröße | L1 mm | SW mm |
|-------------|-----------|---------|-------------------|----------|----------|
| 234 A-ES | 111725 | G 1/4 | LW 4, LW 6 | 15,0 | 17 |
| 234 A/S-ES | 111726 | G 1/4 | LW 9 | 15,0 | 17 |
| 234 B-ES | 111727 | G 3/8 | LW 4, LW 6, LW 9 | 15,0 | 19 |
| 234 C-ES | 111728 | G 1/2 | LW 9 | 16,0 | 24 |
| 234 C/S-ES | 111729 | G 1/2 | LW 13 | 16,0 | 24 |
| 234 C/L-ES | 111730 | G 1/2 | LW 6, LW 9, LW 13 | 20,0 | 24 |
| 234 C/M-ES | 111731 | G 3/4 | LW 13, LW 19 | 16,0 | 32 |
| 234 C/N-ES | 111732 | G 1 | LW 19, LW 25 | 18,0 | 41 |

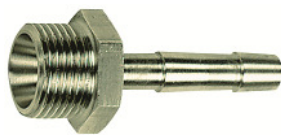


239 E-ES

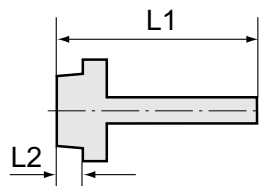


Einschraubschlauchtüllen mit Außengewinde zylindrisch

| Artikel Nr. | Ident Nr. | Gewinde | für Schlauch mm | L1 mm | L2 mm | SW mm |
|-------------|-----------|---------|--------------------|----------|----------|----------|
| 239.00-ES | 111733 | M5 | LW 4 | 15,5 | 5,0 | 8 |
| N239.00-ES1 | 111734 | M5 | LW 6 | 23,5 | 5,0 | 9 |
| 239.01-ES | 111735 | G 1/8 | LW 4 | 41,5 | 9,0 | 14 |
| 239.02-ES | 111736 | G 1/8 | LW 6 | 41,5 | 9,0 | 14 |
| N239.02-ES1 | 111737 | G 1/8 | LW 8 | 36,0 | 7,0 | 14 |
| 239.03-ES | 111738 | G 1/8 | LW 9 | 48,5 | 10,0 | 17 |
| 239 A-ES | 111739 | G 1/4 | LW 4 | 48,5 | 10,0 | 17 |
| 239 B-ES | 111740 | G 1/4 | LW 6 | 48,5 | 10,0 | 17 |
| N239 B-ES1 | 111741 | G 1/4 | LW 8 | 39,0 | 9,0 | 17 |
| 239 C-ES | 111742 | G 1/4 | LW 9 | 48,5 | 10,0 | 17 |
| N239 C-ES1 | 111743 | G 1/4 | LW 10 | 39,0 | 9,0 | 17 |
| 239 C/S-ES | 111744 | G 1/4 | LW 13 | 48,5 | 10,0 | 19 |
| 239 D-ES | 111745 | G 3/8 | LW 4 | 48,5 | 10,0 | 19 |
| 239 E-ES | 111746 | G 3/8 | LW 6 | 48,5 | 10,0 | 19 |
| N239 E-ES1 | 111747 | G 3/8 | LW 8 | 39,0 | 9,0 | 19 |
| 239 F-ES | 111748 | G 3/8 | LW 9 | 48,5 | 10,0 | 19 |
| N239 F-ES1 | 111749 | G 3/8 | LW 10 | 39,0 | 9,0 | 19 |
| 239 F/S-ES | 111750 | G 3/8 | LW 13 | 48,5 | 10,0 | 19 |
| 239 G-ES | 111751 | G 1/2 | LW 6 | 48,5 | 10,0 | 24 |
| N239 G-ES1 | 111752 | G 1/2 | LW 8 | 42,0 | 11,0 | 24 |
| 239 H-ES | 111753 | G 1/2 | LW 9 | 48,5 | 10,0 | 24 |
| N239 H-ES1 | 111754 | G 1/2 | LW 10 | 42,0 | 11,0 | 24 |
| 239 J-ES | 111755 | G 1/2 | LW 13 | 50,0 | 10,0 | 24 |
| N239 J-ES1 | 111756 | G 1/2 | LW 16 | 53,0 | 11,0 | 24 |
| N239 J-ES2 | 111757 | G 1/2 | LW 19 | 53,0 | 11,0 | 24 |
| 239 K-ES | 111758 | G 3/4 | LW 9 | 50,5 | 11,0 | 27 |
| 239 M-ES | 111759 | G 3/4 | LW 13 | 52,0 | 11,0 | 27 |
| 239 P-ES | 111760 | G 3/4 | LW 19 | 50,5 | 11,0 | 27 |
| N239 S-ES | 111761 | G 1 | LW 19 | 55,0 | 13,0 | 38 |
| N239 W-ES | 111762 | G 1 | LW 25 | 55,0 | 13,0 | 38 |
| N239 Z-ES | 111763 | G 1 | LW 32 | 55,0 | 13,0 | 38 |

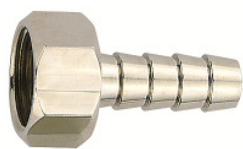


N239 F-ESR

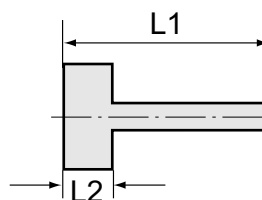


Einschraubschlauchtüllen mit Außengewinde konisch

| Artikel Nr. | Ident Nr. | Gewinde | für Schlauch mm | L1 mm | L2 mm | SW mm |
|-------------|-----------|---------|--------------------|----------|----------|----------|
| N239 C-ESR | 111764 | R 1/4 | LW 9 | 39,7 | 9,7 | 17 |
| N239 F-ESR | 111765 | R 3/8 | LW 9 | 40,1 | 10,1 | 19 |
| N239 FS-ESR | 111766 | R 3/8 | LW 13 | 43,1 | 10,1 | 19 |
| N239 J-ESR | 111767 | R 1/2 | LW 13 | 47,2 | 13,2 | 24 |
| N239 J-ESR2 | 111768 | R 1/2 | LW 19 | 55,2 | 13,2 | 24 |
| N239 P-ESR | 111769 | R 3/4 | LW 19 | 56,2 | 14,5 | 32 |
| N239 W-ESR | 111770 | R 1 | LW 25 | 58,8 | 16,8 | 38 |

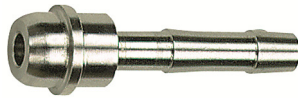


239.19-ES

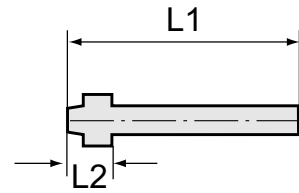


Aufschraubschlauchtüllen mit Innengewinde zylindrisch

| Artikel Nr. | Ident Nr. | Gewinde | für Schlauch mm | L1 mm | L2 mm | SW mm |
|-------------|-----------|---------|--------------------|----------|----------|----------|
| 239.10-ES | 111771 | G 1/8 | LW 6 | 35,0 | 10,0 | 12 |
| 239.11-ES | 111772 | G 1/8 | LW 8 | 35,0 | 10,0 | 12 |
| 239.12-ES | 111773 | G 1/4 | LW 6 | 36,0 | 11,0 | 17 |
| 239.13-ES | 111774 | G 1/4 | LW 8 | 36,0 | 11,0 | 17 |
| 239.14-ES | 111775 | G 1/4 | LW 10 | 36,0 | 11,0 | 17 |
| 239.15-ES | 111776 | G 1/4 | LW 13 | 40,5 | 11,0 | 17 |
| 239.18-ES | 111777 | G 3/8 | LW 6 | 36,0 | 11,0 | 19 |
| 239.19-ES | 111778 | G 3/8 | LW 8 | 36,0 | 11,0 | 19 |
| 239.20-ES | 111779 | G 3/8 | LW 10 | 36,0 | 11,0 | 19 |
| 239.21-ES | 111780 | G 3/8 | LW 13 | 40,5 | 11,0 | 19 |
| 239.25-ES | 111781 | G 1/2 | LW 6 | 39,0 | 14,5 | 24 |
| 239.26-ES | 111782 | G 1/2 | LW 8 | 39,0 | 14,5 | 24 |
| 239.27-ES | 111783 | G 1/2 | LW 10 | 39,0 | 14,5 | 24 |
| 239.28-ES | 111784 | G 1/2 | LW 13 | 44,0 | 14,5 | 24 |



236 E-ES


Schlauchtüllen mit Kugelnippel

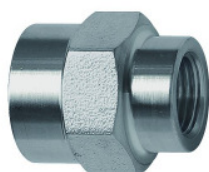
| Artikel Nr. | Ident Nr. | für Schlauch mm | für Überwurfmutter | L1 mm | L2 mm |
|-------------|-----------|--------------------|--------------------|----------|----------|
| 236.02-ES | 111785 | LW 6 | G 1/8 | 33,5 | 6,0 |
| 236 A-ES | 111786 | LW 4 | G 1/4 | 47,0 | 13,5 |
| 236 B-ES | 111787 | LW 6 | G 1/4 | 47,0 | 13,5 |
| 236 C-ES | 111788 | LW 9 | G 1/4 | 47,0 | 14,0 |
| 236 E-ES | 111789 | LW 6 | G 3/8 | 48,5 | 15,0 |
| 236 F-ES | 111790 | LW 9 | G 3/8 | 48,5 | 15,0 |
| 236 H-ES | 111791 | LW 9 | G 1/2 | 48,5 | 15,0 |
| 236 J-ES | 111792 | LW 13 | G 1/2 | 48,5 | 15,0 |



252.22-ES

Muffen mit Außensechskant

| Artikel Nr. | Ident Nr. | Gewinde | L1 mm | SW mm |
|-------------|-----------|---------|----------|----------|
| 252.20-ES | 111793 | M5 | 11,0 | 8 |
| 252.21-ES | 111794 | G 1/8 | 22,0 | 14 |
| 252.22-ES | 111795 | G 1/4 | 26,0 | 17 |
| 252.23-ES | 111796 | G 3/8 | 26,0 | 22 |
| 252.24-ES | 111797 | G 1/2 | 30,0 | 27 |
| 252.24/1-ES | 111798 | G 3/4 | 36,0 | 32 |
| 252.24/2-ES | 111799 | G 1 | 40,0 | 41 |



252.32-ES

Muffen mit Außensechskant, reduzierend

| Artikel Nr. | Ident Nr. | Gewinde 1 | Gewinde 2 | L1 mm | SW mm |
|-------------|-----------|-----------|-----------|----------|----------|
| 252.31-ES | 111800 | G 1/8 | M5 | 12,6 | 14 |
| 252.32-ES | 111801 | G 1/4 | G 1/8 | 19,5 | 17 |
| 252.33-ES | 111802 | G 3/8 | G 1/4 | 22,8 | 22 |
| 252.34-ES | 111803 | G 1/2 | G 3/8 | 24,0 | 27 |
| 252.35-ES | 111804 | G 3/4 | G 1/2 | 25,0 | 32 |
| 252.36-ES | 111805 | G 1 | G 3/4 | 25,0 | 41 |