



Unsere Ideen bewegen Menschen ...  
Our inventions move people ...



Unsere Ideen bewegen Menschen ...  
Our inventions move people ...



**Germany**  
Rolko Kohlgrüber GmbH  
Industriestraße 14  
D-33829 Borgholzhausen

Phone +49 5425 9402-0  
Fax +49 5425 9402-20

www.rolko.com  
info@rolko.com

**Danmark**  
Rolko Scandinavia ApS  
Suensonvej 2  
DK-8600 Silkeborg

Phone +45 87 20 18 88  
Fax +45 86 81 86 88

www.rolko.com  
RolkoDK@rolko.com

**Poland**  
Rolko Polska s.p.z.o.o.  
ul. Paderewskiego 3 b  
PL-59400 Jawor

Phone +48 76 870 70 70  
Fax +48 76 870 70 20

www.rolko.com  
RolkoPL@rolko.com

**Netherlands**  
Rolko Nederland bv  
Limburghaven 2b  
NL-3433 PK Nieuwegein

Phone +313 02 41 32 30  
Fax +313 02 54 16 55

www.rolko.com  
RolkoNL@rolko.com

**Zubehör | Accessories**  
**2006**

Das umfangreiche Zubehör für die Rehabilitationsbranche rundet das ROLKO Vollsortiment ab. Für viele Einsatzgebiete finden Sie hier den passenden Artikel.

The product range is rounded off by its extensive accessories for the rehab branch. For many fields of application you will find here fitting articles.



**Zubehör** | Accessories  
**2006**



## **Inhalt** | Content

- Lager und Achsen** | Bearings and axles **4**
- Befestigungen** | Fastenings **6**
- Handgriffe** | Handgrips **8**
- Stockhalter** | Stick holder **10**
- Sicherheitsgurte** | Safety belts **12**
- Toilettensitze** | Toilet seats **14**
- Toilettensstuhl Eimer und Rollen** | Toilet chair buckets and castors **16**
- Therapietische** | Therapy table **18**
- Zubehör** | Accessories **20**
- Halter für Kopfstützen** | Holder for head-rest **26**



**Kugellager** | Ball bearings

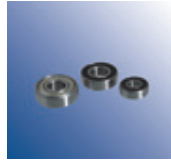
Art-Nr Art-No	Typ	30	7	8	23
KG-PK8-23	SK				

**Kugellager Edelstahl** | Ball bearings stainless steel



Art-Nr Art-No	Typ	7	8	1/2"	22
KG-PK8-22-2RS	608 2RS				
KG-PK11/2-28-RS	-				
KG-PK11/2-2RS	R8 2RS				
KG-PK12-28-2RS	6001 2RS				
KG-PK12-32-2RS	6201 2RS				
KG-PK15-32-2RS	6002 2 RS				
KG-PK17-40	6203 ZZ				
KG-PK17-47	6303 ZZ				
KG-PK20-47	6204 ZZ				
KG-PK25-47	6005 ZZ				

Art-Nr Art-No	Typ	8	1/2"	28,6
KG-PK1/2-R8	R8 SS 2RS			
KG-PK12-28-2RS-SS	6001 SS 2RS			
KG-PK12-32VA	6201 SS 2RS			



**Nabenabdeckkappen** | Hub covers

**Für Schraubenkopf** | For screw head

Art-Nr Art-No	Befestigung Fixing	D
KN-S-32/10	M10	31
KN-S-32/12	M12	35



**Flexibel, für Lagersitz 28-29 mm**

Flexible, for bearing seat 28-29 mm

Art-Nr Art-No	D1	D
KN-S-29-E	28	32

**Für Lagersitz 32 mm** | For bearing seat 32 mm

Art-Nr Art-No	D1	D
KN-S-35/32	32	35



**Achsmaterial** | Axle material

**Sechskantschraube DIN 931 mit 2 Unterlegscheiben und Sicherungsmutter** | Hexagon bolt DIN 931 with 2 washers and lock nut

Schraube Bolt	Art-Nr Art-No
M8x55	U-A931-M8x55
M8x55	U-A931-M8x60
M8x55	U-A931-M8x80

**Inbusschraube DIN 6912 und Sicherungsmutter** | Socket-head cap screw DIN 6912 and lock nut

Schraube Bolt	Art-Nr Art-No
M8x55	U-A6912-M8x55
M8x75	U-A6912-M8x75

**Quick-Release-Achsen** | Quick-release-axles

Art-Nr Art-No	D	EL
QRA-85	12	85
QRA-98	12	98
QRA-103	12	103
QRA-104-1/2	1/2"	104
QRA-108	12	108
QRA-123	12	123
QRA-123-1/2	1/2"	123

**Ausführung komplett Edelstahl** | Accomplishment completely stainless steel

Art-Nr Art-No	D	EL
QRA-98-KVA	12	98
QRA-103-KVA	12	103
QRA-104-1/2-KVA	1/2"	104
QRA-123-KVA	12	123



**Quick-Release-Achsen** | Quick-release-axles

Art-Nr Art-No	D	EL
QRA-78-VA-K28	12	78
QRA-98-VA-K32	12	98
QRA-103-VA-K28	12	103



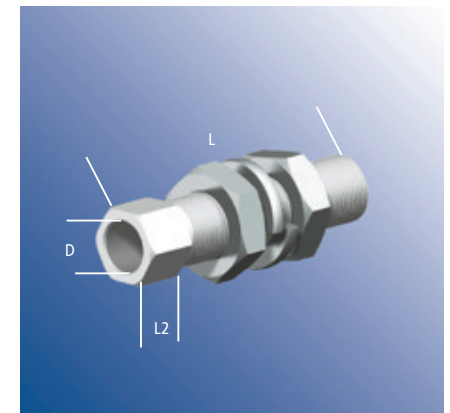
**Adapter** | Adapter

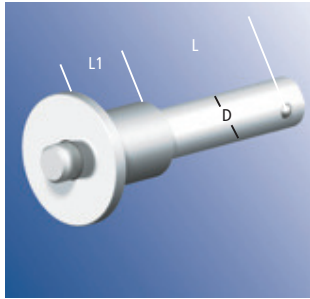
**2 x Mutter M16 und Federring** | 2 x nut M16 and spring washer

Art-Nr Art-No	D	L2	L
A12-51-9	1/2"	9	51
A12-45-7	12	7	45
A12-50-10	12	10	50
A12-57-13	12	13	57
A12-72-13	12	13	72
A12-74-10	12	10	74

**Ausführung Edelstahl** | Accomplishment stainless steel

Art-Nr Art-No	D	L2	L
A12-31-9-VA	12	9	31
A12-50-10-VA	12	10	50





**Mini Quick-Release-Achsen** | Mini quick-release-axles

L	L1	D	Art.-Nr Art.-No
34	11,5	6,3	QRA-M-34-6.3
34	15	7,9	QRA-M-34-7.9
26	15	8,0	QRA-M-8
27	25	8,0	QRA-M-27.5-8
37	16	9,8	QRA-M-63-9.8INV
26	15	10,0	QRA-M-10



**Klemmhebel** | Clamp lever

L	Schraube Bolt	Art.-Nr Art.-No
50	M6x15	KH-M6x15-50
50	M6x20	KH-M6x20-50
50	M6x25	KH-M6x25-50
50	M6x45	KH-M6x45-50
75	M8x20	KH-M8x20-75
75	M8x25	KH-M8x25-75
75	M8x40	KH-M8x40-75
75	M8x50	KH-M8x50-75
90	M10x40	KH-M10x40-92



**Klemmhebel** | Clamp lever

L	Schraube Bolt	Art.-Nr Art.-No
50	M6	KH-M6-50
75	M6	KH-M6-75
75	M8	KH-M8-75
90	M10	KH-M10-92

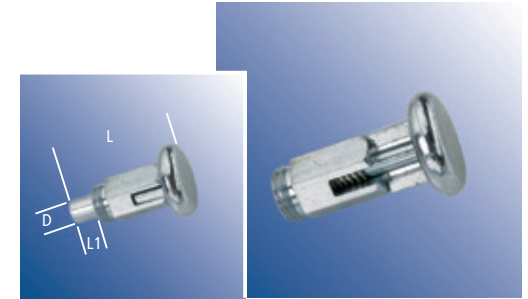


**Sterngriffe** | Hand wheels

L	Schraube Bolt	Art.-Nr Art.-No
40	M8	ST40-9005M8
40	-	M8x20
63	M10	ST63-9005M10
63	-	M10x40
		ST63-9005S10x40

**Zugschnäpper** | Snaps

Schraube Bolt	L	D	L1	Art.-Nr Art.-No
M10x1	31	6	7,5	ZS-10x1
M10x1	31	6	7,5	ZS-10x1-OA
M12x1	38	7	8	ZS-12x1
M12x1	38	7	8	ZS-12x1-OA
M12x1,75	40	7	8	ZS-12x1.75
M12x1,75	40	7	8	ZS-12x1.75-OA



**Zugschnäpper** | Snaps  
**Kunststoffkopf** | Plastic head

Schraube Bolt	L	D	L1	Art.-Nr Art.-No
M10x1	31	6	7,5	ZS-10x1-KS
M10x1	31	6	7,5	ZS-10x1-OA-KS
M12x1,75	40	7	8	ZS-12x1.75-KS
M12x1,75	40	7	8	ZS-12x1.75-OA-KS



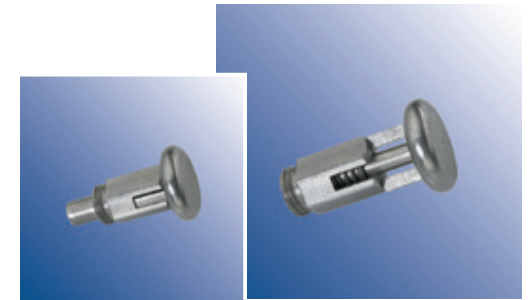
**Zugschnäpper** | Snaps

Schraube Bolt	L	D	L1	Art.-Nr Art.-No
M10x1	47,5	5	5	ZS-10x1-47.5
M10x1	47,5	5	5	ZS-10x1-47.5-OA
M12x1,5	55	6	6	ZS-12x1.5-55
M12x1,5	55	6	6	ZS-12x1.5-55-OA



**Zugschnäpper** | Snaps  
**Edelstahl** | Stainless steel

Schraube Bolt	L	D	L1	Art.-Nr Art.-No
M10x1	31	6	6	ZS-10x1-OA-V2A
M10x1	31	6	7,5	ZS-10x1-VA
M12x1,75	40	7	8	ZS-12x1.75-OA-V2A
M12x1,75	40	7	8	ZS-12x1.75-VA





Handgriff | Handgrip

L		Art.-Nr Art.-No
110	22	GR-KS



Handgriff | Handgrip  
mit Reflektor | With reflektor

L		Art.-Nr Art.-No
120	22	GR-KS-RE



Handgriff | Handgrip

L		Art.-Nr Art.-No
120	22	GR-Ergo-S
120	25	GR-Ergo-S-25



Handgriff | Handgrip

L		Art.-Nr Art.-No
120	22	GR-Ergo-GS

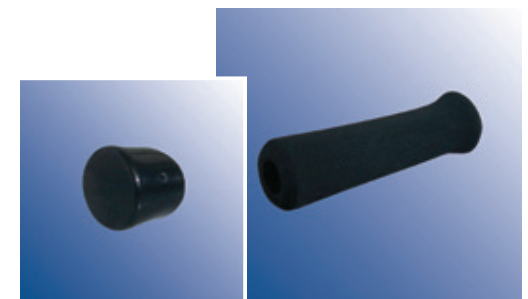
Handgriff | Handgrip

L		Art.-Nr Art.-No
125	22	GR-S



Handgriff | Handgrip

L		Art.-Nr Art.-No
125	22	GR-120



Rohrüberzug | Tube cover

L		Art.-Nr Art.-No
210	22	GR-210
260	22	GR-260
680	22	GR-680



Rohrüberzug | Tube cover  
Oberfläche glatt | Smooth surface

L		Art.-Nr Art.-No
210	22	GR-210-G
260	22	GR-260-G
680	22	GR-680-G



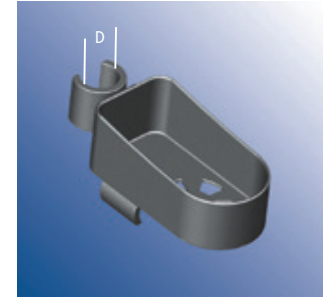
Weitere Längen und Ausführungen auf Anfrage |  
Further length and accomplishments on request



D	Art.-Nr Art.-No
19	STH1-19-GB
22	STH1-22-GB
23	STH1-23-GB
25	STH1-25-GB
28	STH1-28-GB



D	Art.-Nr Art.-No
22	STH2-22-CL-GB
25	STH2-25-CL-GB



Mögliche Befestigungen | Possible fixations



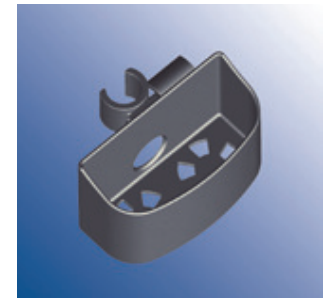
D	Art.-Nr Art.-No
19	STH2-19-GB
22	STH2-22-GB
23	STH2-23-GB
25	STH2-25-GB
28	STH2-28-GB



D	Art.-Nr Art.-No
19	U-SCH19-STH
22	U-SCH22-STH
23	U-SCH23-STH
25	U-SCH25-STH
28	U-SCH28-STH



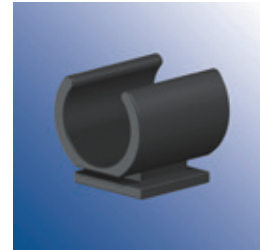
D	Art.-Nr Art.-No
22	STH4-22-CL-GB
25	STH4-25-CL-GB



Mögliche Befestigungen | Possible fixations



D	Art.-Nr Art.-No
19	STH4-19-GB
22	STH4-22-GB
23	STH4-23-GB
25	STH4-25-GB
28	STH4-28-GB



D	Art.-Nr Art.-No
22	U-Clip-22
25	U-Clip-25

D	Art.-Nr Art.-No
22	KL-STH-CL22
25	KL-STH-CL25



D	Art.-Nr Art.-No
25	STH3-25-KL

2 Schraublöcher 6mm |  
2 screwing holes 6mm

D	Art.-Nr Art.-No
2x6mm	KL-STH-S2





**Kunststoffschloss** | Plastic lock

L	B	Art.-Nr Art.-No
1400	40	SHG-KS-GB40-KS

**Leichtes Metallschloss** | Light metal lock



L	B	Art.-Nr Art.-No
1400	40	SHG-GB40S-KS

**Metallschloss** | Metal lock



L	B	Art.-Nr Art.-No
1400	50	SHG-GB50S-KS

L	B	Art.-Nr Art.-No
1550	50	SHG-GB50S-KS-D



L	B	Art.-Nr Art.-No
1250	50	SHG-GB50S-SCHL

L	B	Art.-Nr Art.-No
1350	50	SHG-GB50S-OESE

**Metallschloss** | Metal lock

L	B	Art.-Nr Art.-No
2000	50	SHG-GB50S-F



**4-Punkt Schloss** | 4-point lock

B	Befestigung Fixing	Art.-Nr Art.-No
40	4 x Schnalle	SHG-4P-GB40S



**5-Punkt Schloss** | 5-point lock

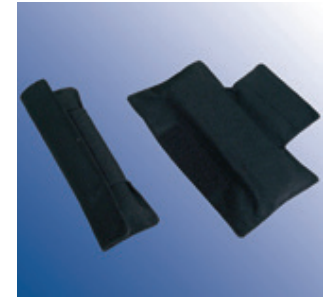
B	Befestigung Fixing	Art.-Nr Art.-No
40	4 x Schnalle	SHG-3/5P-GB40SV

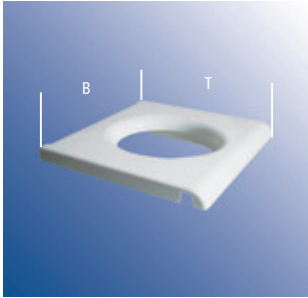
B	Befestigung Fixing	Art.-Nr Art.-No
40	4 x Schnalle	SHG-3/5P-GB40RO



**Polster** | Cushion

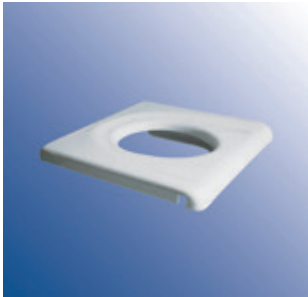
L	B	Art.-Nr Art.-No
190	40	SHG-POL190-40
190	50	SHG-POL190-50





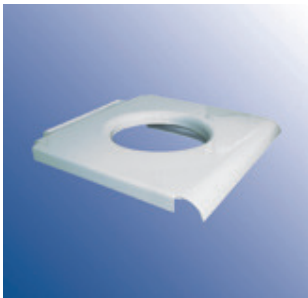
mit Eimerhalter, abnehmbar | with bucket holder, removable

B	T	Art.-Nr Art.-No
450	440	TS-O/M



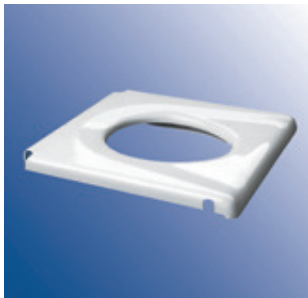
mit Eimerhalter | with bucket holder

B	T	Art.-Nr Art.-No
445	425	TS-M

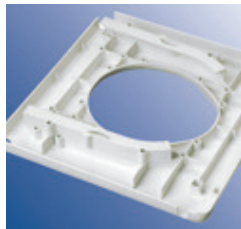


mit Eimerhalter | with bucket holder

B	T	Art.-Nr Art.-No
445	425	TS-M-178



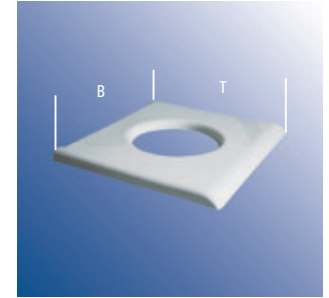
mit Eimerhalter | with bucket holder



B	T	Art.-Nr Art.-No
550	480	TS-M-176N

ohne Eimerhalter | without bucket holder

B	T	Art.-Nr Art.-No
460	435	TS-INV-OE

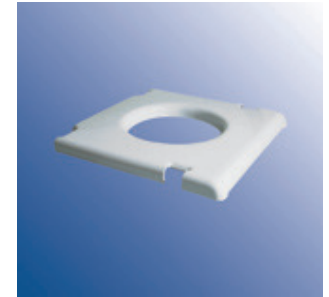


verstärkte Ausführung | strong type

B	T	Art.-Nr Art.-No
460	435	TS-INV-OE-V8

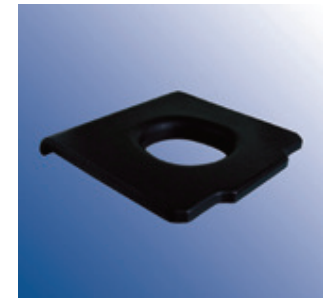
mit Eimerhalter | with bucket holder

B	T	Art.-Nr Art.-No
430	440	TS-SUN



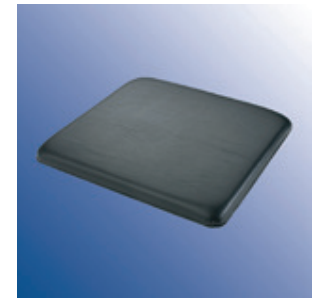
Toilettensitz-Auflage aus PU | Toilet seat edition

B	T	Art.-Nr Art.-No
435	450	TS-A-PU



Toilettensitz-Abdeckung | Cover for toilet seat

B	T	Art.-Nr Art.-No
420	420	TS-AD-KS







**Toiletteneimer aus Kunststoff** | Toilet buckets plastic

Farbe Colour	Art.-Nr Art.-No
Grau   Grey	E-DE-G
Braun   Brown	E-DE-B



**Toiletteneimer aus Kunststoff** | Toilet buckets plastic

Farbe Colour	Art.-Nr Art.-No
Grau   Grey	E-DE-N-G



**Apparaterolle** | Castor  
**Rückenloch 12mm** | Bore hole 12mm

Ø	h	Art.-Nr Art.-No
100	30	ATR-TKG102
125	30	ATR-TKG125
150	30	ATR-TKG150



**Apparaterolle** | Castor  
**Rückenloch 12mm** | Bore hole 12mm

Ø	h	Art.-Nr Art.-No
100	30	FTR-TKG102
125	30	FTR-TKG125
150	30	FTR-TKG150

**Apparaterolle** | Castor  
**Spreizkonus 19mm** | Expander 19mm

Ø	h	Art.-Nr Art.-No
100	30	ATE-TKG102
125	30	ATE-TKG125
150	30	ATE-TKG150



**Apparaterolle** | Castor  
**Spreizkonus 19mm** | Expander 19mm

Ø	h	Art.-Nr Art.-No
100	30	FTE-TKG102
125	30	FTE-TKG125
150	30	FTE-TKG150



**Apparaterolle** | Castor  
**Zapfen 19mm, Querbohrung 6mm/M6** | Plug 19mm, crossway drilling 6mm/M6

Ø	h	Art.-Nr Art.-No
100	30	ATZ-TKG102
125	30	ATZ-TKG125
150	30	ATZ-TKG150

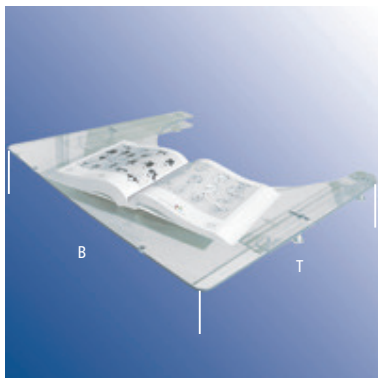


**Apparaterolle** | Castor  
**Zapfen 19mm, Querbohrung 6mm/M6** | Plug 19mm, crossway drilling 6mm/M6

Ø	h	Art.-Nr Art.-No
100	30	FTZ-TKG102
125	30	FTZ-TKG125
150	30	FTZ-TKG150



**Weitere Ausführungen auf Anfrage** | Further accomplishments on request



**Therapietische aus 6 mm Polycarbonat**  
| Therapy table in 6 mm polycarbonat transparent

B	B1	T	T1	H	Art.-Nr Art.-No
580	460-540	590	305	25-31	TP580-31
580	460-540	590	305	41	TP580-41
580	460-540	590	305	51	TP580-51
630	490-590	590	305	25-31	TP630-31
630	490-590	590	305	41	TP630-41
630	490-590	590	305	51	TP630-51
700	560-660	590	305	25-31	TP700-31
700	560-660	590	305	41	TP700-41
700	560-660	590	305	51	TP700-51

**Vorderkante** | Front edge



**Distanzleisten zur Höhenregulierung**  
| Distance ship for adjustable height

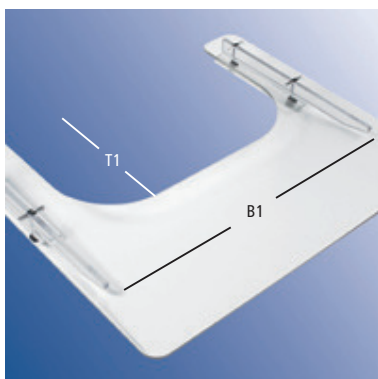


L	H	Schraube/ Bolt	Art.-Nr Art.-No
385	10	-	TP-D10
385	25	M6x60	TP-D25S60
385	31	M6x60	TP-D31S60
385	41	M6x70	TP-D41S70
385	51	M6x80	TP-D51S80
385	6	-	TP-D6

L	H	Art.-Nr Art.-No	Für
400	30	TP-L400	Für   For TP580
580	30	TP-L580	Für   For TP630/700

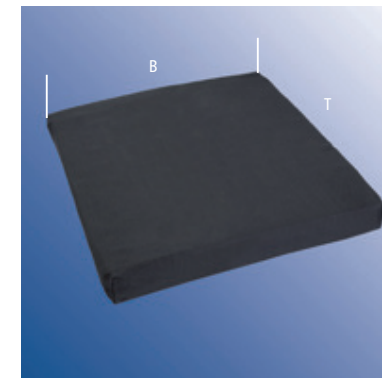
**Therapietische aus 8 mm Polycarbonat**  
| Therapy table in 8 mm polycarbonat transparent

B	B1	T	T1	H	Art.-Nr Art.-No
600	480-560	570	300	25-33	TP-L1
680	560-640	570	300	25-33	TP-L2



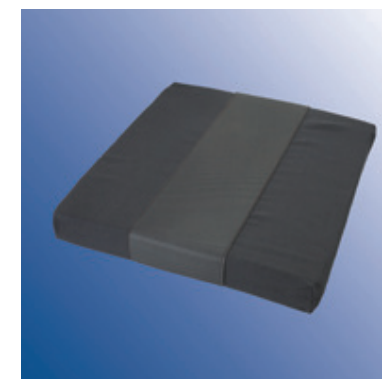
**Sitzkissen Standard** | Seat cushion standard  
**Bezug abnehmbar** | Cover removable

B	T	H	Art.-Nr Art.-No
380	400	50	SK-380x400-S
380	430	50	SK-380x430-S
380	450	50	SK-380x450-S
400	400	50	SK-400x400-S
400	430	50	SK-400x430-S
400	450	50	SK-400x450-S
430	430	50	SK-430x430-S
430	450	50	SK-430x450-S
430	480	50	SK-430x480-S
450	450	50	SK-450x450-S
450	480	50	SK-450x480-S



**Sitzkissen mit Rutschsicherung** | Seat cushion with slide safeguarding  
**Mit Reißverschluss** | with zipper

B	T	H	Art.-Nr Art.-No
400	400	50	SK-400x400-R-S
400	430	50	SK-400x430-R-S
430	430	50	SK-430x430-R-S
430	450	50	SK-430x450-R-S
430	480	50	SK-430x480-R-S



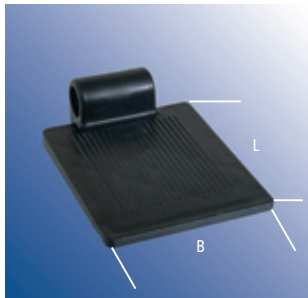
**Wir bedrucken Sitzkissen nach Ihren Vorgaben** |  
We print seat cushions following your need





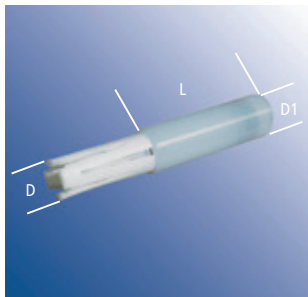
**Fußtritt** | Foot pedal

L	B		Art.-Nr Art.-No
72	33	22	U-FT-K-S



**Fußbrett** | Foot board

L	B		Art.-Nr Art.-No
153	140	22	FB-K-153-S
173	140	22	FB-K-173-S



**Griffverlängerung** | Grip extension

L	D	D1	Art.-Nr Art.-No
40	19	22	GV-19/40
70	19	22	GV-19/70



**Schieberhöhenversteller** | Pusher height adjustment

	Art.-Nr Art.-No
20	U-SCHV-20
22	U-SCHV-22

**Fußschalen** | Foot bowls

**Mit Lang- und Schraublöchern** | With ablong and screw holes

L	B	B1	Größe Size	Art.-Nr Art.-No
175	87	69	34	FS-K-180
209	103	73	35	FS-K-215
236	115	89	37	FS-K-240
286	141	108	45	FS-K-280
329	158	125	50	FS-K-320



**Fußschalen** | Foot bowls

**Rohling für individuelle Bearbeitung** | Preform for individuell handling

L	B	B1	Größe Size	Art.-Nr Art.-No
175	87	69	34	FS-K-180-PEO
209	103	73	35	FS-K-215-PEO
236	115	89	37	FS-K-240-PEO
286	141	108	45	FS-K-280-PEO
329	158	125	50	FS-K-320-PEO



**Fußgurt** | Foot belt

Umfang Size	Art.-Nr Art.-No
191-267 mm	FG-L
152-229 mm	FG-M
114-191 mm	FG-S



**Wadengurt** | Calf belt

L	B	Art.-Nr Art.-No
850	50/80	WG-850S-KB





**Einkaufsnetz** | Shopping-net

Farbe Colour	Art.-Nr Art.-No
Schwarz   Black	NETZ-1-S



**Armauflage** | Arm-rest

**Kunstlederbezug** | Artificial leather cover

L	E	Farbe Colour	Art.-Nr Art.-No
260	83/129	B/G	AG-240-BG-6
260	83/129	S/S	AG-240-SS-6
370	210/225	B/G	AG-370-BG-6
370	210/225	S/S	AG-370-SS-6

**B/G = Blau/Grau S/S = Schwarz/Schwarz** | B/G blue/grey S/S black/black



**Ersatzteilkoffer** | Spare parts kit

Größe Size	Art.-Nr Art.-No
31 x 29,5 cm	ERSATZTEILKOFFER

**Inhalt** | Content: **Kugellager** | Ball bearings  
**Rändelbuchsen** | Knurled bushes  
**Distanzrohre** | Distance tubes  
**Befestigungsmaterial für Bowdenzüge** | Fitting kits for cables  
**Achsmaterial** | Axle material  
**Abdeckkappen** | Plastic caps  
**Ventile mit Schraubere** | Valves with screwdrivers  
**Montiereisen** | Mounting helps

**Luftpumpen** | Air-pumps

L		Art.-Nr Art.-No
380	DV	LP-KLH-DV-W



**Luftpumpen** | Air-pumps

L		Art.-Nr Art.-No
380	AV	LP-KLH-AV-W-S



**Halter** | Holder

D	Art.-Nr Art.-No
1x22, 1x25	LP-HK



**Kompressor** | Compressor

Bar	D		Art.-Nr Art.-No
max. 14	480x40	AV/DV	LP-SLK-AV-S





**Material PET 1 mm** | Material PET 1 mm

**Transparent** | Transparency

**Incl. Befestigungsschrauben** | Including fixing screws

Zoll Inch	D	D1	Art.-Nr Art.-No
20x1.75	385	137	SP-TR-20x1.75
22x1.3/8	443	135	SP-TR-570
24x1.3/8	485	138	SP-TR-620



**Material PET 1 mm** | Material PET 1 mm

**Transparent** | Transparency

**Incl. Befestigungsschrauben**

| Including fixing screws

Zoll Inch	D	D1	Art.-Nr Art.-No
20x1.3/8	431	135	SP-TR-510L4
22x1.3/8	469	135	SP-TR-570L4/6
24x1.3/8	512	142	SP-TR-620L4/6
26x1.3/8	564	138	SP-TR-670L4/6

**Material PET 1,5 mm** | Material PET 1,5 mm

**Transparent** | Transparency

**Mit Bohrungen zur Befestigung**

| With drillings for fixation

Zoll Inch	D	D1	Art.-Nr Art.-No
24x1.3/8	512	142	SP-TR-620-1



**Standardbefestigung**

| Standard fastening



**Optional mit Klettverschluss**

| Optional with straps

**Speichenschutz motive** | Spoke guard motives



SKF-SP-570-1



SKF-SP-570-2



SKF-SP-620-1

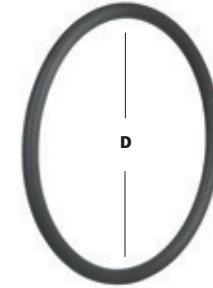


SKF-SP-620-2

**Greifreifenüberzug Silikon** | Push-rim cover in silicone

**Schwarz gerillt** | Black fluted

Zoll Inch	D	D1	Art.-Nr Art.-No
20	412-424	16-21	SGR-20
22	486-501	16-21	SGR-22
24	519-532	16-21	SGR-24
26	571-590	16-21	SGR-26



**Greifreifenüberzug Silikon** | Push-rim cover in silicone

**Schwarz glatt** | Black smooth

Zoll Inch	D	D1	Art.-Nr Art.-No
20	412-424	16-21	SGR-20-G
22	486-501	16-21	SGR-22-G
24	519-532	16-21	SGR-24-G
26	571-590	16-21	SGR-26-G



**Greifreifenüberzug Silikon** | Push-rim cover in silicone

**Grau glatt** | Grey smooth

Zoll Inch	D	D1	Art.-Nr Art.-No
20	412-424	16-21	SGR-20-GRAU-G
22	486-501	16-21	SGR-22-GRAU-G
24	519-532	16-21	SGR-24-GRAU-G
26	571-590	16-21	SGR-26-GRAU-G



**Radabdeckung** | Wheel cover

**Universal** | Universal

Zoll Inch	L	B	H	Art.-Nr Art.-No
24 universal	460	48	100	RA460/48-S



Zoll Inch	L	B	H	Art.-Nr Art.-No
12.1/2x2.1/4	320	60	160	RA310/55-S
20x1.3/8	545	60	220	RA510/35-S
22x1.3/8	590	60	250	RA570/35-S
24x1.3/8	640	60	280	RA620/35-S





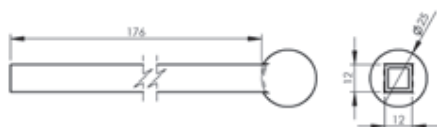
**U-BST-KO-5/6**

**Stahl verchromt** |  
Steel chromed



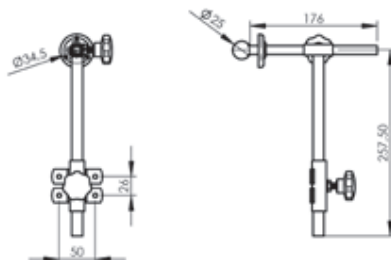
**U-BVK-12-KO-5/6**

**Stahl verchromt** |  
Steel chromed



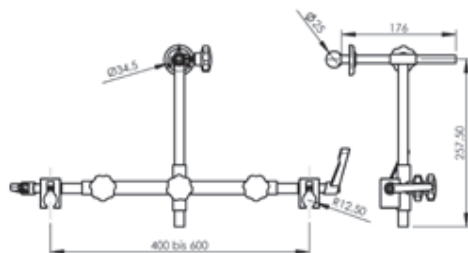
**U-BV-KOU**

**Stahl verchromt** |  
Steel chromed

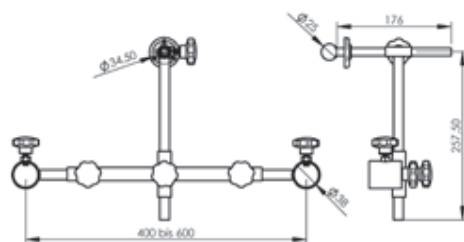


**HA-UV-KO**

**Stahl verchromt** |  
Steel chromed



**alternativ HA-UV-KO-38** |  
alternative HA-UV-KO-38



**Weitere Zubehörteile siehe Rubrik 7 Polyurethanschaum** |  
Further accomplishments see chapter 7 polyurethane foam materials

Büro für Gestaltung Thorsten Ebermann, Bielefeld

Alle Maße sind ca.-Angaben.

Abbildungen unverbindlich. Änderungen vorbehalten.

Wir liefern gemäß unseren neuesten Verkaufs- und Lieferbedingungen.

All measures are approx. informations.

Illustrations are not binding. Changings possible.

We deliver as our latest general delivery conditions.