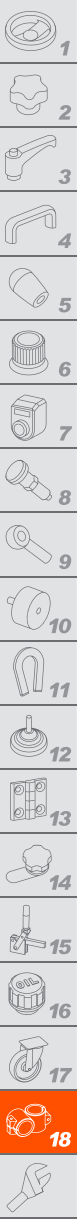


GN 276 | Pivoting connecting clamps

Aluminium



MATERIAL

Aluminium, matte finish.
AISI 304 stainless steel screw and nut.

STANDARD EXECUTIONS

- **GN 276-BL-OZ**: natural aluminium.
- **GN 276-BL-MZ**: natural aluminium, with embossed centering ring.
- **GN 276-BL-AV**: natural aluminium, with embossed toothing.
- **GN 276-BL-IV**: natural aluminium, with flush toothing.
- **GN 276-SW-OZ**: aluminium, epoxy resin coating, RAL 9005 black colour.
- **GN 276-SW-MZ**: aluminium, epoxy resin coating, RAL 9005 black colour, with embossed centering ring.
- **GN 276-SW-AV**: aluminium, epoxy resin coating, RAL 9005 black colour, with embossed toothing.
- **GN 276-SW-IV**: aluminium, epoxy resin coating, RAL 9005 black colour, with flush toothing.



FEATURES AND APPLICATIONS

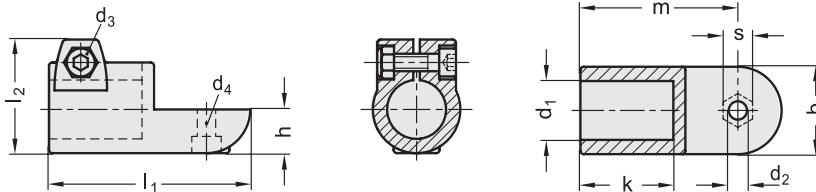
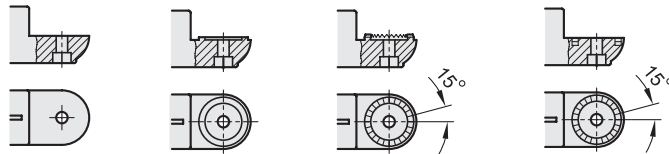
The assembly hole of GN 276 connecting clamps allows an excellent match with tubes GN 990 (see page 1778).
GN 276 connecting clamps can be assembled with connecting clamps GN 272 (see page 1752), GN 274 (see page 1754) or GN 278 (see page 1760).
The clamping screw d3 may be replaced by clamping kit GN 911 (see page 1782).

GN 276-OZ

GN 276-MZ

GN 276-AV

GN 276-IV



GN 276-BL-OZ GN 276-SW-OZ

Code BL	Code SW	Description	b	d1	d2	d3	d4	h	k	l1	l2	m	s	d3 Clamping kit	△
GN.59271	GN.59276	GN 276-B20-OZ-2-*	40	20	8.5	M8	M8	20	42.5	92	52	72	13	GN 911-M8-32	210
GN.59351	GN.59356	GN 276-B25-OZ-2-*	40	25	8.5	M8	M8	20	42.5	92	52	72	13	GN 911-M8-32	185
GN.59431	GN.59436	GN 276-B30-OZ-2-*	40	30	8.5	M8	M8	20	42.5	92	52	72	13	GN 911-M8-32	160
GN.59511	GN.59516	GN 276-B40-OZ-2-*	65	40	10.5	M10	M10	32.5	74	148	78	115	17	GN 911-M10-55	775
GN.59591	GN.59596	GN 276-B42-OZ-2-*	65	42	10.5	M10	M10	32.5	74	148	78	115	17	GN 911-M10-55	750
GN.59671	GN.59676	GN 276-B45-OZ-2-*	65	45	10.5	M10	M10	32.5	74	148	78	115	17	GN 911-M10-55	725
GN.59751	GN.59756	GN 276-B48-OZ-2-*	65	48	10.5	M10	M10	32.5	74	148	78	115	17	GN 911-M10-55	675
GN.59831	GN.59836	GN 276-B50-OZ-2-*	65	50	10.5	M10	M10	32.5	74	148	78	115	17	GN 911-M10-55	650

* Complete the description of the standard item needed by adding the finish of the connector clamps: BL (blank) or SW (black).

**GN 276-BL-MZ GN 276-SW-MZ**

Code BL	Code SW	Description	b	d1	d2	d3	d4	h	k	l1	l2	m	s	d3 Clamping kit	
GN.59251	GN.59256	GN 276-B20-MZ-2-*	40	20	8.5	M8	M8	20	42.5	92	52	72	13	GN 911-M8-32	210
GN.59331	GN.59336	GN 276-B25-MZ-2-*	40	25	8.5	M8	M8	20	42.5	92	52	72	13	GN 911-M8-32	190
GN.59411	GN.59416	GN 276-B30-MZ-2-*	40	30	8.5	M8	M8	20	42.5	92	52	72	13	GN 911-M8-32	160
GN.59491	GN.59496	GN 276-B40-MZ-2-*	65	40	10.5	M10	M10	32.5	74	148	78	115	17	GN 911-M10-55	765
GN.59571	GN.59576	GN 276-B42-MZ-2-*	65	42	10.5	M10	M10	32.5	74	148	78	115	17	GN 911-M10-55	755
GN.59651	GN.59656	GN 276-B45-MZ-2-*	65	45	10.5	M10	M10	32.5	74	148	78	115	17	GN 911-M10-55	705
GN.59731	GN.59736	GN 276-B48-MZ-2-*	65	48	10.5	M10	M10	32.5	74	148	78	115	17	GN 911-M10-55	665
GN.59811	GN.59816	GN 276-B50-MZ-2-*	65	50	10.5	M10	M10	32.5	74	148	78	115	17	GN 911-M10-55	630

GN 276-BL-AV GN 276-SW-AV

Code BL	Code SW	Description	b	d1	d2	d3	d4	h	k	l1	l2	m	s	d3 Clamping kit	
GN.59211	GN.59216	GN 276-B20-AV-2-*	40	20	8.5	M8	M8	20	42.5	92	52	72	13	GN 911-M8-32	210
GN.59291	GN.59296	GN 276-B25-AV-2-*	40	25	8.5	M8	M8	20	42.5	92	52	72	13	GN 911-M8-32	190
GN.59371	GN.59376	GN 276-B30-AV-2-*	40	30	8.5	M8	M8	20	42.5	92	52	72	13	GN 911-M8-32	165
GN.59451	GN.59456	GN 276-B40-AV-2-*	65	40	10.5	M10	M10	32.5	74	148	78	115	17	GN 911-M10-55	770
GN.59531	GN.59536	GN 276-B42-AV-2-*	65	42	10.5	M10	M10	32.5	74	148	78	115	17	GN 911-M10-55	755
GN.59611	GN.59616	GN 276-B45-AV-2-*	65	45	10.5	M10	M10	32.5	74	148	78	115	17	GN 911-M10-55	715
GN.59691	GN.59696	GN 276-B48-AV-2-*	65	48	10.5	M10	M10	32.5	74	148	78	115	17	GN 911-M10-55	665
GN.59771	GN.59776	GN 276-B50-AV-2-*	65	50	10.5	M10	M10	32.5	74	148	78	115	17	GN 911-M10-55	660

GN 276-BL-IV GN 276-SW-IV

Code BL	Code SW	Description	b	d1	d2	d3	d4	h	k	l1	l2	m	s	d3 Clamping kit	
GN.59231	GN.59236	GN 276-B20-IV-2-*	40	20	8.5	M8	M8	20	42.5	92	52	72	13	GN 911-M8-32	200
GN.59311	GN.59316	GN 276-B25-IV-2-*	40	25	8.5	M8	M8	20	42.5	92	52	72	13	GN 911-M8-32	180
GN.59391	GN.59396	GN 276-B30-IV-2-*	40	30	8.5	M8	M8	20	42.5	92	52	72	13	GN 911-M8-32	155
GN.59471	GN.59476	GN 276-B40-IV-2-*	65	40	10.5	M10	M10	32.5	74	148	78	115	17	GN 911-M10-55	760
GN.59551	GN.59556	GN 276-B42-IV-2-*	65	42	10.5	M10	M10	32.5	74	148	78	115	17	GN 911-M10-55	740
GN.59631	GN.59636	GN 276-B45-IV-2-*	65	45	10.5	M10	M10	32.5	74	148	78	115	17	GN 911-M10-55	700
GN.59711	GN.59716	GN 276-B48-IV-2-*	65	48	10.5	M10	M10	32.5	74	148	78	115	17	GN 911-M10-55	655
GN.59791	GN.59796	GN 276-B50-IV-2-*	65	50	10.5	M10	M10	32.5	74	148	78	115	17	GN 911-M10-55	650

* Complete the description of the standard item needed by adding the finish of the connector clamps: BL (blank) or SW (black).