

U.I. Lapp GmbH	DATASHEET	
	EPIC® H-EE 10	10180400 14.11.2013

H-EE inserts with high contact density based on the proven H-BE series.
The H-EE inserts with machined contacts for a high number of pins in very tight spaces.

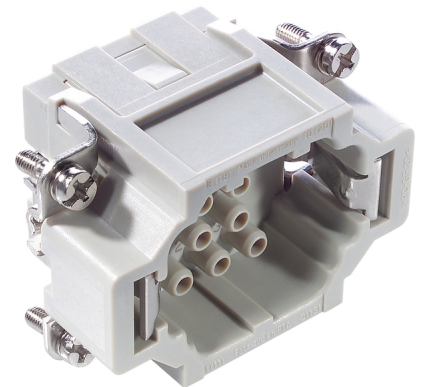
For assembly in H-B housing



Industrial machinery and plant engineering



Temperature-resistant



Info

Inserts with high contact density for medium power

Application range

Mechanical engineering
Plant engineering

Remark

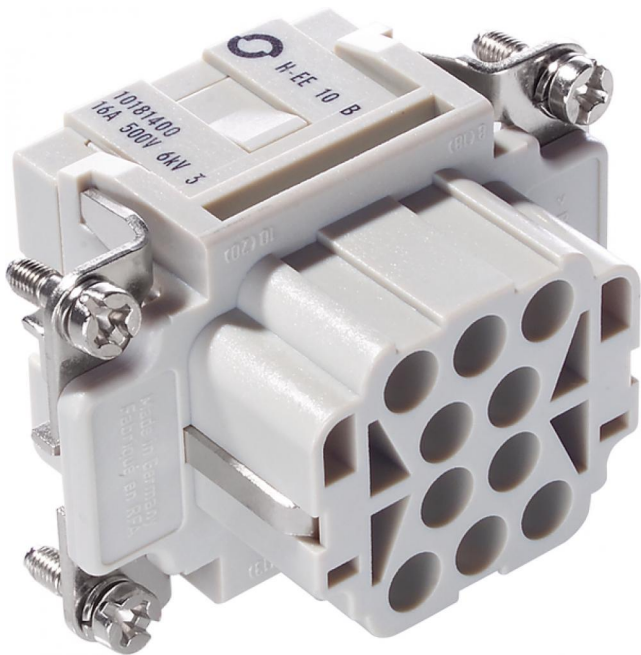
Photographs are not to scale and do not represent detailed images of the respective products.

Technical Data

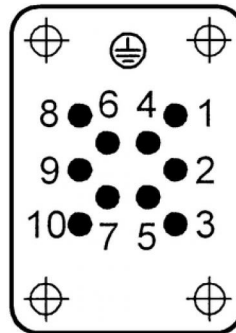
Article:	H-EE 10 SC
Version:	male
Article designation:	machined
Contacts:	1 - 10
Pieces / PU:	10
Rated voltage (V):	IEC: 500 V UL: 600 V CSA: 600 V
Rated impulse voltage:	6 kV
Rated current (A):	IEC: 16 A UL: 16 A CSA: 16 A
Contact resistance:	< 2 mOhm
Contacts:	Copper alloy, hard silver/gold-plated
Number of contacts:	10 + PE
Termination methods:	Crimp termination: 0.5 - 4.0 mm ²
Cycle of mechanical operation:	100
Temperature range:	-40 °C to +100 °C, short-term up to +125 °C
Degree of soiling:	3

Product Management	Document: EPIC® H-EE 10	1 / 2
--------------------	-------------------------	-------

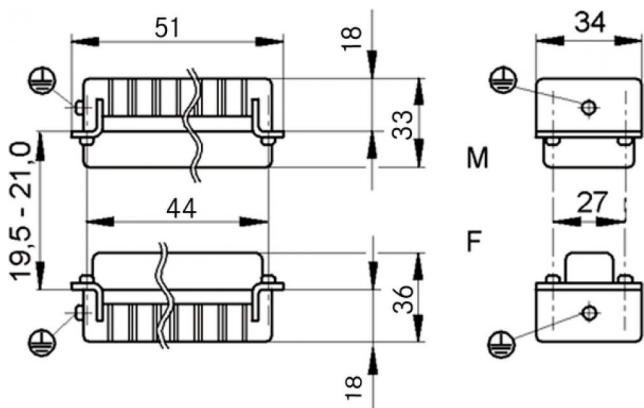
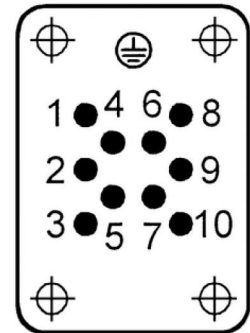
U.I. Lapp GmbH	<h1>DATASHEET</h1>	
	EPIC® H-EE 10	10180400 14.11.2013



M



F



Product Management	Document: EPIC® H-EE 10	2 / 2
--------------------	-------------------------	-------