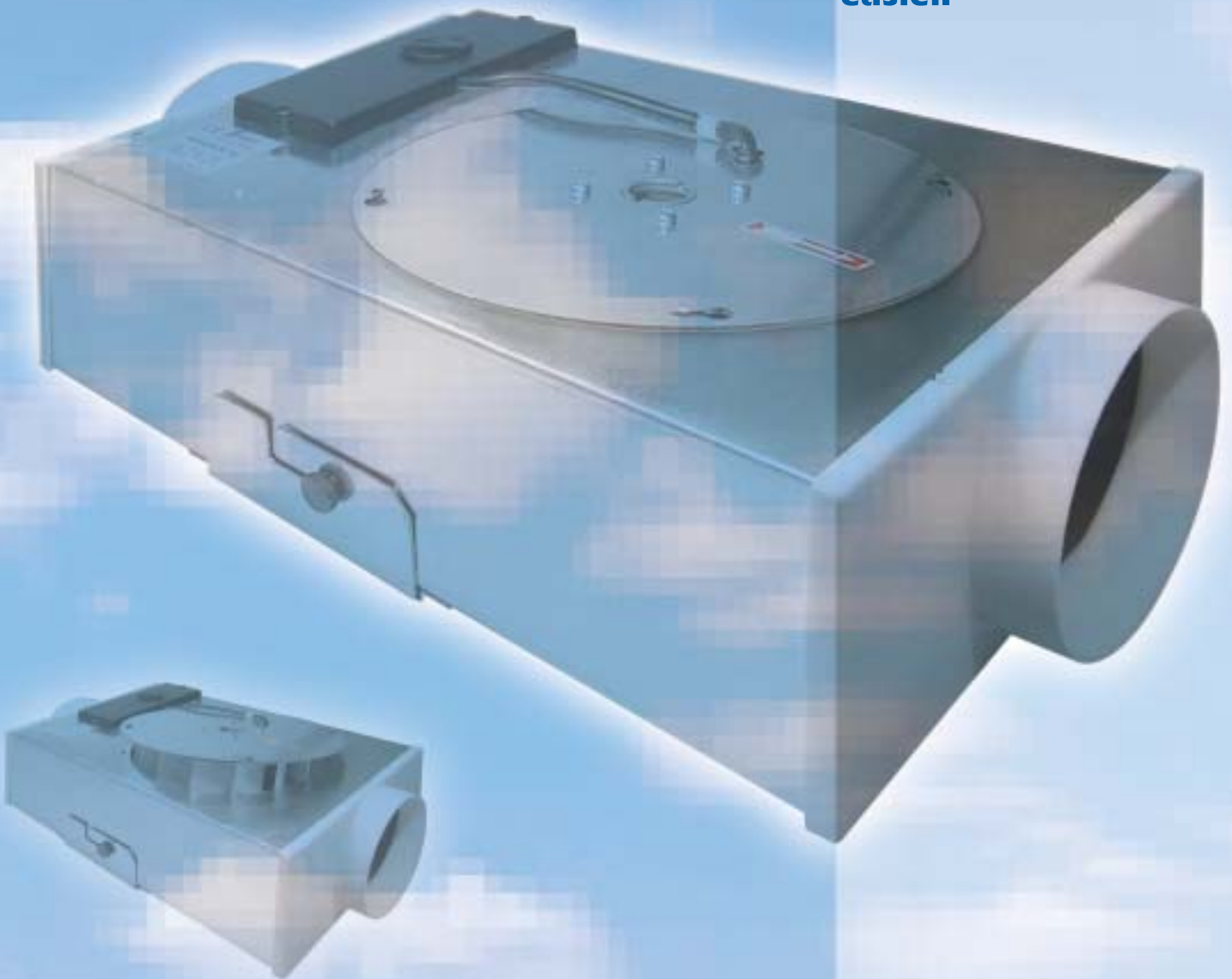


@-box *micro*

Compact
Silent
Versatile
User-Friendly

@-box micro centrifugal in-line fan combines innovative features to increase efficiency, reduce noise and make installation easier.





CENTRIFUGAL IN-LINE SLIM BOX



@-box^{micro} centrifugal in-line fan is **extremely flat and compact** (h=122 mm) and has been designed to offer the best solution in those installations that require **small to medium air flow** and where a **very narrow height or limited space is available**.

Based on the concept of modularity, **@-box^{micro}** offers a **vast choice of inlet & outlet options** to enable ducting from multiple sources and to suit a wide range of residential and commercial applications.

@-box^{micro} flexible solutions and **advanced technical features (silence, high performance, trouble free and long life operation)** provide a powerful and ideal combination between final users' requirements and the technology of a high specification product.

Technical features

- Casing in galvanized steel sheet. Inlet and outlet in shock proof self-extinguishing high quality technopolymer.
- **Integral junction box.**
- Backward curved blades dynamically balanced on external rotor motor provided with non-self-resetting thermal cut-out.
- **Swing-out motor and impeller** for ease of cleaning and maintenance.
- Ball bearing motor, permanently lubricated for maintenance free operation and continuous running.
- Can be used with flexible and rigid ducting.
- Supplied with ceiling/wall fixing plate.
- Supplied with **retaining rings** to avoid the use of clamps.
- Fan complies with EN 60335-2-80, EC Low Voltage Directive 73/23 – 93/68 and EC Directive EMC 89/336.

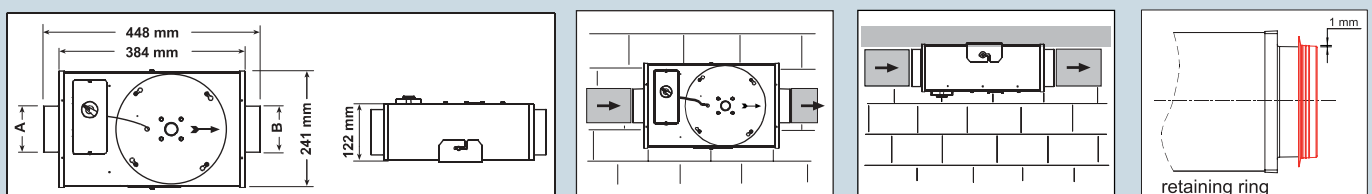
Options

- Inlet & Outlet diameters combinable from 80 to 125 mm
- Acoustic insulation polyurethane foam
- Timer (integral adjustable from 3 to 25 mn)
- 2 speed
- Integral 5 speed speed controller
- "Low speed & Boost" facility for continuous ventilation

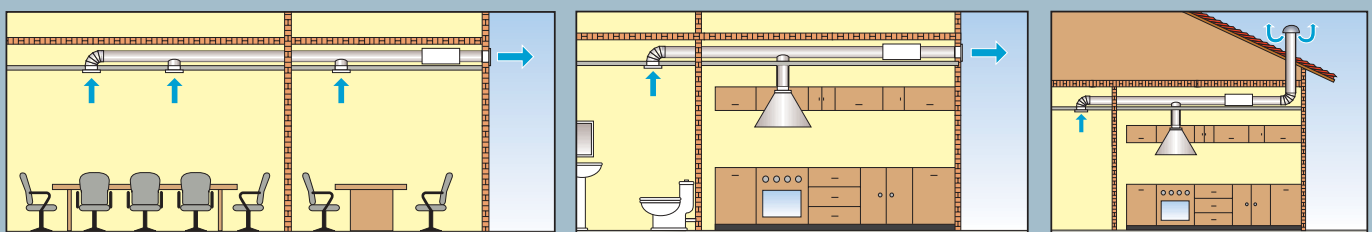
* **Patent pending**

COMPACT SIZES

DIMENSIONS (mm)

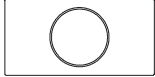



APPLICATIONS



FLEXIBILITY

MODELS combinable spigots from 80 to 125 mm

INLET (A)			OUTLET (B)	
$\varnothing 100$ ($\varnothing 96$) $\varnothing 125$ ($\varnothing 120$)		$\varnothing 80/80$ ($\varnothing 76 / \varnothing 76$) $\varnothing 80/100$ ($\varnothing 76 / \varnothing 96$) $\varnothing 80/125$ ($\varnothing 76 / \varnothing 120$)		$\varnothing 100$ ($\varnothing 96$) $\varnothing 125$ ($\varnothing 120$)

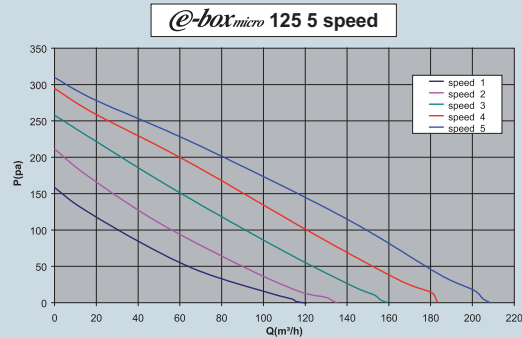
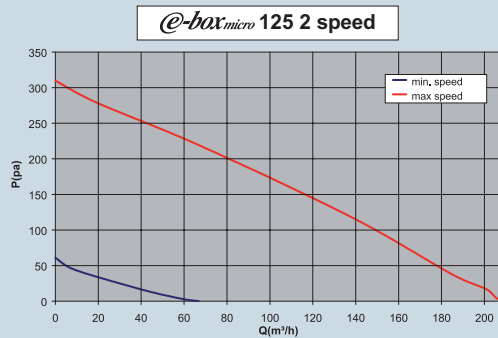
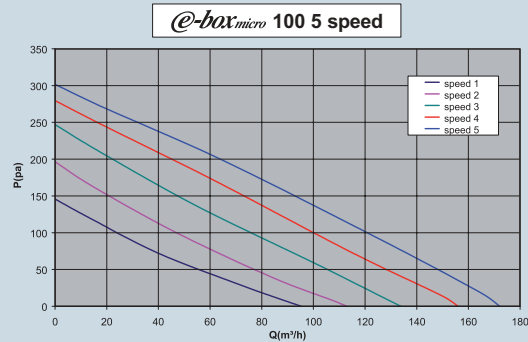
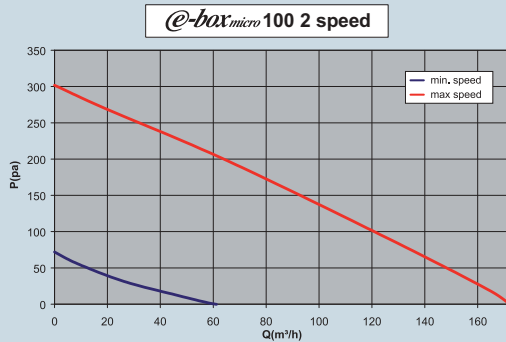
PERFORMANCE

SPECIFICATION

@-box _{micro}	RPM	m ³ /h max	l/s max	Pa max	dB(A)* @ 3 m max	W max	V Hz	Speed controller	Protection
100 - 100	1960	172	48	302	34,4	60	230-50/60	RVS / RVN	IPX4
125 - 125	1890	208	58	310	36,9	61	230-50/60	RVS / RVN	IPX4

*Lp(A) at 3 m in a non reverberating room at the maximum fan efficiency

CURVES



SILENCE & COMFORT

- Aerodynamic constructive features to avoid any vibration
- Acoustically isolated (insulation foam on request)
- Suitable for continuous running (24H)
- Speed controllable



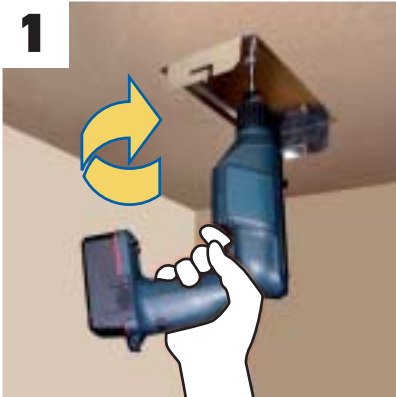
RVN

Electronic speed controller. Infinitely variable speed control by potentiometer.
 ON/OFF switch - IP42 protection
 Max. load: 300 W (1,5 A)
 Supply voltage: 230V-50 / 60 Hz
 Sizes: 110 x 110 x 58 mm
 Weight: 0,5 kg



RVS

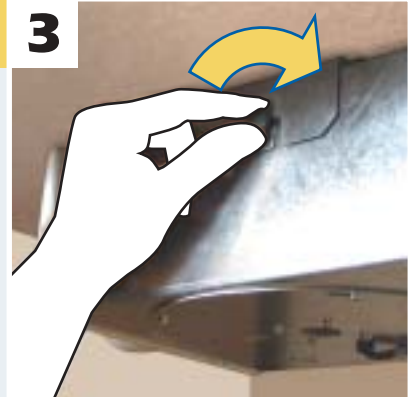
5 steps speed controller (fitted with transformer)
 ON/OFF switch
 IP42 protection
 Max. load: 100 W (0,5 A)
 Supply voltage: 230V-50/60 Hz
 Sizes: 118 x 118 x 58 mm
 Weight: 0,7 kg

USER FRIENDLY / FIT & FORGET**1**

Fix the plate

2

Hook the fan

3

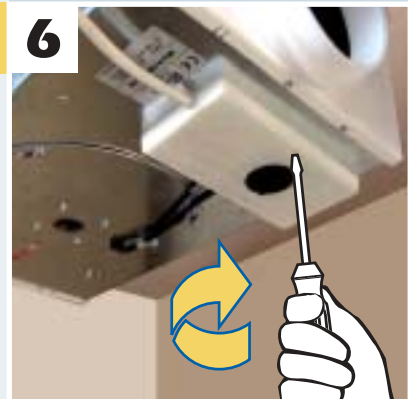
Fix the fan turning the knobs clock-wise

4

Remove the terminal for easy connection

5

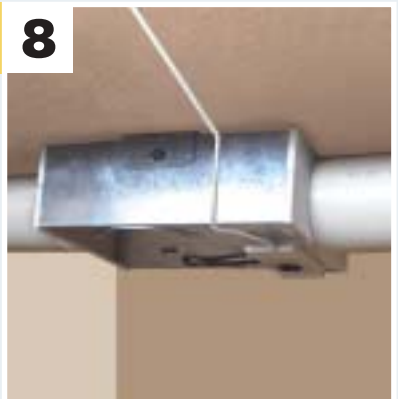
Fix the connected terminal into the integral junction box

6

Fix the junction box cover

7

Install duct

8

Installation completed

Further information is available on www.elicent.it

We reserve the right to modify any technical data without notice.

ELICENT S.p.A.

Via L. Da Vinci, 4 - 25017 Lonato (BS) Italy

Tel. +39 030 9913751

Fax +39 030 9913781

E-mail: sales@elicent.itHome page: www.elicent.it