

# Data sheet Illuminated pushbutton Ø 22 mm stainless steel 316L.

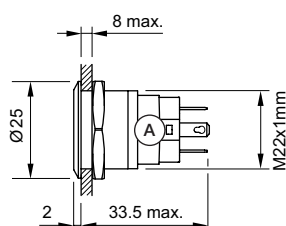
*Part No.: 82-6651.2154*

## Technical data



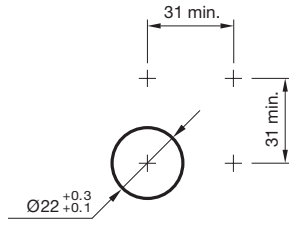
Front form	round
Mounting cut-out	Ø 22.3 mm
Terminal	Plug-in terminal, 2.8 x 0.5 mm
Shape of illumination	Ring (Tritan)
Operating voltage	24 V DC (LED)
Operating Travel	ca. 3 mm
Lens illumination	illuminative
Lens colour	Silver
Lens shape	flush
Lens material	Stainless steel 316L
Lens optics	opaque
Front bezel shape	flush
Front bezel material	Stainless steel 316L
Weight	0.016 kg
IP front protection	IP65, IP67
Contact material	Silver
Illumination colour	White
Kind of illumination	Single-LED
Switching action	Maintained
Switching system	Snap-action switching element
Switching rating	36 V AC/DC @ 0,6 A
Contacts	1 FS
Operating temperature	- 30 °C ... + 70 °C
Approbations	CB, CCC, C UL, UL
Operating force	4 ... 7 N
Climate resistance	Damp heat, 21 days according to IEC 60512-11
Hints	
	<ul style="list-style-type: none"> <li>Switching voltage: max. 36 V AC/1A, max. 36 V DC/0.6</li> </ul>

## Dimensions



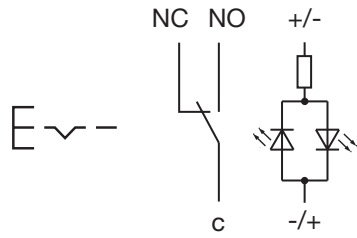
## Mounting cut-outs

---



## Wiring diagrams

---



## Component layouts

---

