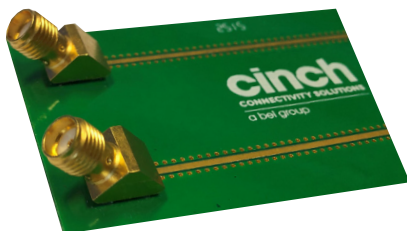


## 45° PCB Mount SMA Connectors



### RF Solutions

The Johnson™ 45° PCB Mount SMA Connector is designed to offer mid-board launch in tight enclosures as well as board to board applications, where there may be height restrictions for Vertical Mount and width restrictions for an end launch connector.

The Johnson 45° PCB Mount 2.92mm Connector is uniquely designed for tight enclosures, utilizing a solderless contact to the PCB surface and two screws for quick and easy mounting.

### Features

- 40 GHz for the 2.92mm
- VSWR performance is 1.25 from DC to 26.5 GHz and 1.5 Max from 26.5 GHz to 40 GHz.

### Applications

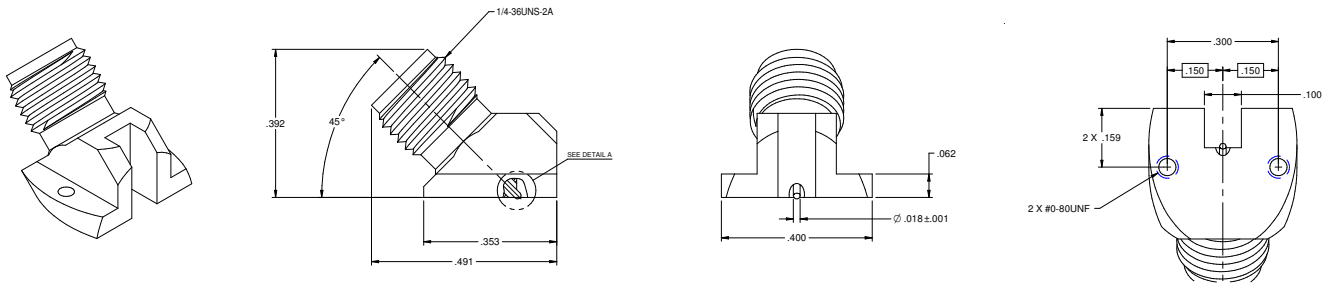
- Semiconductor foundry equipment
- Instrumentation test fixture equipment
- Semiconductor Testing
- Board characterization
- Test and measurement systems

# 45° PCB Mount SMA Connectors



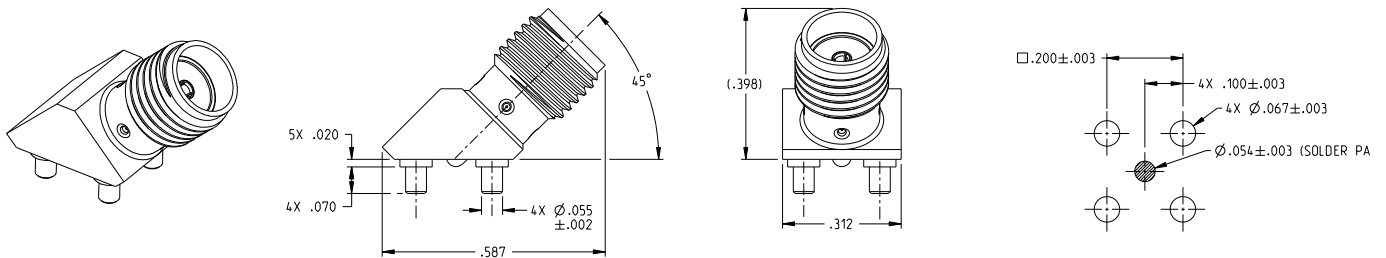
## 2.92mm 45° Connectors

Part Number	Description	Material
145-0701-221	2.92mm Jack, 45 Degree PCB Mount	Beryllium Copper, Gold-Plated



## SMA 45° Connectors

Part Number	Description	Material
142-0711-271	SMA Jack, 45 Degree PCB Mount	Beryllium Copper, Gold-Plated



**Asia Pacific**  
 +86 21 5442 7668  
 ccs.asia.sales@as.cinch.com

**Europe, Middle East & Africa**  
 +44 (0) 1245 342060  
 cinchconnectivity@eu.cinch.com

**North America**  
 +1 507 833 8822  
 ccsorders@us.cinch.com

[belfuse.com/cinch](http://belfuse.com/cinch)