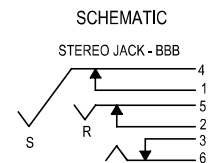
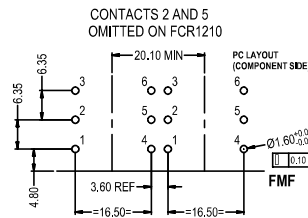
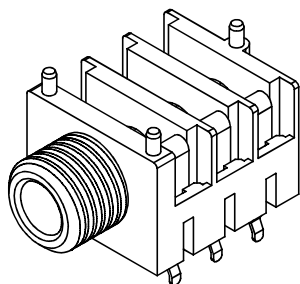


# CLIFF

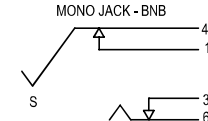
## JACK SOCKET S2S



**FCR1210** - S2S/BNB/PCC/WN  
MONO JACK SOCKET WITH PC LEGS  
SUPPLIED WITH BLACK PLASTIC NUT



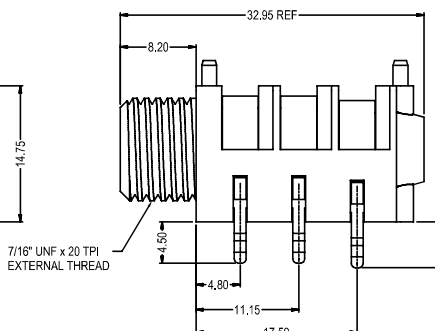
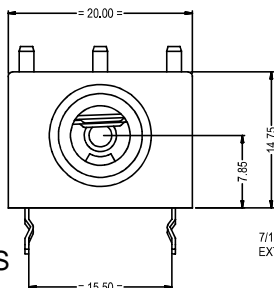
SWITCH CONTACTS OPEN WHEN  
PLUG IS INSERTED, CLOSE WHEN  
PLUG IS WITHDRAWN.



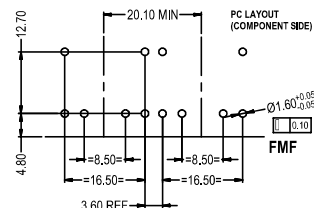
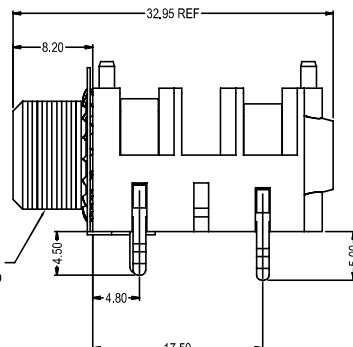
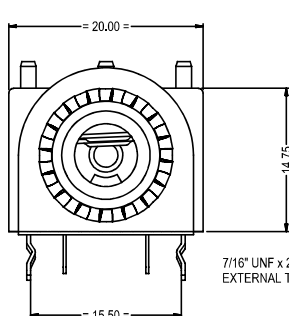
SWITCH CONTACTS OPEN WHEN  
PLUG IS INSERTED, CLOSE WHEN  
PLUG IS WITHDRAWN.



**FCR1215** - S2S/BBB/PCC/WN  
STEREO JACK SOCKET WITH PC LEGS  
SUPPLIED WITH BLACK PLASTIC NUT



**FCR1210W** - S2S/BNB/PCC/EW/N  
MONO JACK SOCKET WITH PC LEGS AND FITTED EARTH WASHER WITH 2 PC LEGS  
SUPPLIED WITH BLACK PLASTIC NUT



**FCR1210WMN** - S2S/BNB/PCC/WM/N/FW  
MONO JACK SOCKET WITH PC LEGS AND FITTED EARTH WASHER WITH 1 PC LEG  
SUPPLIED WITH FIBRE WASHER AND BLACK PLASTIC NUT

