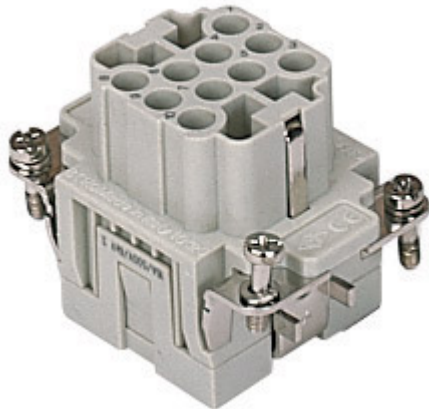




Item code

# CQEF 10



## Brief description:

female insert, 10 poles + PE, crimp connections, 16A, 500V, 6kV, 3, size "44.27", CLASS insert series

Product description		Approvals / Standards	
<b>Model</b>	female insert	<b>Reference standard</b>	EN 61984 (2001-11)
<b>Version</b>	crimp connections	<b>Quality mark</b>	 , EAC
<b>Series</b>	CQE	<b>Conformity</b>	CQC, CE
<b>Product type</b>	for female contacts 16A	<b>General ordering information</b>	
<b>Family</b>	CLASS inserts	<b>EAN code</b>	8015747037044
<b>Size</b>	size "44.27"	<b>Tariff number</b>	85369095
<b>N° of poles</b>	10 poles + 	<b>Country of origin</b>	Made in EU (IT)
<b>Technical data</b>		<b>ETIM classification</b>	EC000438
<b>Current</b>	16 A (A.C. and D.C.)	<b>Packaging Information</b>	
<b>Voltage</b>	500 V	<b>Packaging length</b>	210,00 mm
<b>Sustained impulse voltage</b>	6kV	<b>Packaging height</b>	130,00 mm
<b>Pollution degree</b>	3	<b>Packaging width</b>	240,00 mm
<b>Operating temperature range (min, max)</b>	-40°C ... +125°C	<b>Packaging weight</b>	2,52 kg
<b>Plugging cycles</b>	≥ 500	<b>Packaging volume</b>	6,55 dm <sup>3</sup>
<b>IP degree of protection</b>	IP20 without enclosure; IP65/IP66/IP67/IP68 with enclosure	<b>Packaging description</b>	Carton box
<b>Wire cross section PE</b>	0,14 - 4 mm <sup>2</sup> ; AWG 20 - 12	<b>Packaging quantity</b>	60 Pcs
<b>Other technical details</b>		<b>Packaging EAN code</b>	8015747208772
<b>Characteristics according to EN61984</b>	16A 500V 6kV 3; 16A 830V 8kV 2	<b>Sub-packaging weight</b>	0,42 kg
<b>Insulation resistance</b>	≥ 10 GΩ	<b>Sub-packaging description</b>	Carton
<b>Rated voltage according to UL/CSA</b>	600V	<b>Sub-packaging quantity</b>	10 Pcs
<b>UL 94 flammability rating</b>	V-0	<b>Sub-packaging EAN barcode</b>	8015747037051
<b>Weight</b>	42,00 g		

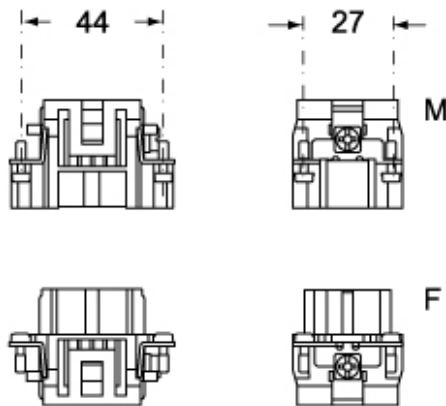
Item code

# CQEF 10

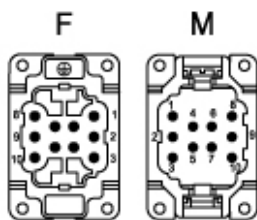


## Catalogue drawings

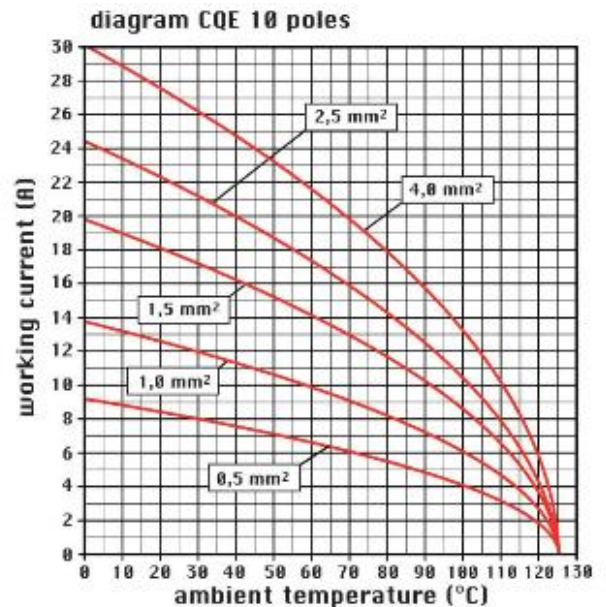
### CQEM 10



### CQEF 10



## Catalogue drawings



## Notes

CQEF/M 10 inserts:

- characteristics according to EN 61984:  
(16A 500V 6kV 3)  
(16A 830V) 8kV 2)
- rated voltage according to UL/CSA: 600V
- insulation resistance: > 10 GOhm
- ambient temperature limit: -40 °C ... +125 °C
- are made of self-extinguishing thermoplastic resin UL 94 V0
- mechanical life: > 500 cycles
- contact resistance: < 1 mOhm
- for contact crimping instructions, please see the crimping tool section (16A contacts, CCF, CCM and CC...AN series) .
- enclosures: size "44.27":  
C-TYPE IP65/IP66  
C7 IP67 stainless steel lever  
V-TYPE IP65/IP66  
stainless steel lever  
T-TYPE IP65 insulating  
JEI zinc-plated steel lever  
BIG hoods  
W-TYPE aggressive environments  
EMC

central lever  
IP68  
panel supports: page:COB