

Collet chucks type ER metal-sealed, according to DIN 6499 A/ISO 15488

Can be used up to 120 bar, concentricity < 2 µm

ATORN[®]

Application

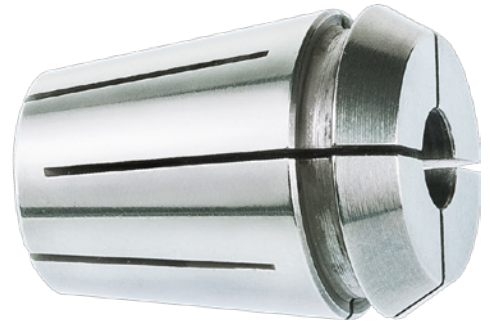
For use on precision collet chucks

Version

- Metal sealed up to 120 bar for internal coolant supply

Advantage

- Higher degree of concentricity extends service life of tool



Art. No.	23388 938
Collet type	ER 32
Clamping diameter	14.5 mm
Outer diameter	33 mm
Length	40 mm

EAN-Code

4050293680270