

NC high-pressure machine vices MH-S

Mechanical-hydraulic clamping system

ATORN[®]

Application

For NC machines, machining centres, tool manufacture, mould making, fixture construction and series production.

Version

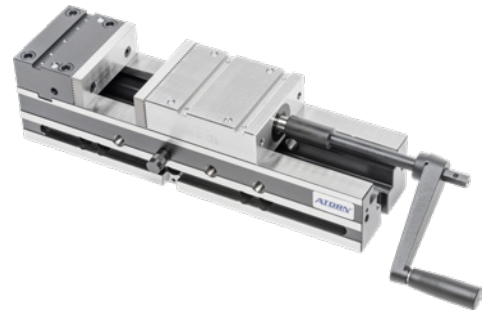
- Spindle made of high-strength special steel
- Basic body, fixed jaw, moving jaws made of case-hardening steel, hardened on all sides
- Guide ways hardened and polished
- Cross grooves and fastening thread on the top of the fixed and movable jaws, for holding top-mounted stepped jaws and grip inserts
- Use of pull-down quick-change jaws possible
- Lateral threads for workpiece stop
- Use of rhomboid T-sliding blocks and interchangeable slides for multiple clamping possible – installation without tools
- Bed length up to 1200 mm and hydraulic actuation available on request
- Side mounting holes for bed length 470 mm

Advantage

- The pre-selected clamping forces enable a workpiece positioning repeat accuracy of ≤ 0.01 mm
- The clamping force can be preselected by the number of spindle rotations
- Spindle mechanically lockable for purely mechanical clamping
- Quick presetting, by means of rigging pin
- Longitudinal and transverse grooves 20H7 as standard, for quick positioning

Delivery

1 pc. high-pressure clamp MH-S, incl. reversible screw-in jaws (1 side grooved longitudinally and crosswise, 1 side smooth) and hand crank (two pieces)



Art. no.	28858 003
Jaws width	125 mm
Body height	82.5 mm
Body length	598 mm
Max. length	692 mm
Total height	125 mm
Max. height	147.1 mm
Min./max. clamping width	0-367 mm
Clamping width of attachment step jaws 2	573 mm
Tension force	40 kN
Weight	45.1 kg
Width across flats	17 mm

EAN-Code

4050293534535