

Platform Cylinder

Series CXT

ø12, ø16, ø20, ø25, ø32, ø40

How to Order

Port thread type

Nil	M thread	ø12 to ø25
	Rc	
TN	NPT	ø32, ø40
TF	G	

CXT M 20 - **100** B - **M9BW** - **2** - **Nil**

Platform cylinder

Bearing type

M	Slide bearing
L	Ball bushing bearing

Bore size/Stroke (mm)

Bore size (mm)	Stroke (mm)										
	15	25	50	75	100	125	150	175	200	250	300
12	●	●	○	○	○						
16	●	●	○	○	○						
20	●	●	○	○	○	○	○	○	○	○	○
25	●	●	○	○	○	○	○	○	○	○	○
32	●	●	○	○	○	○	○	○	○	○	○
40	●	●	○	○	○	○	○	○	○	○	○

●Standard stroke ○Long stroke

* For minimum strokes for auto switch equipped style, refer to page 530.

Made to Order
Refer to page 525 for details.

Number of auto switches

Nil	2 pcs.
S	1 pc.
n	"n" pcs.

Auto switch

Nil	Without auto switch (Built-in magnet)
-----	---------------------------------------

* For the applicable auto switch model, refer to the table below.

Option

Nil	Adjusting bolt with bumper only (Standard)
B	With 2 shock absorbers (Set on the driving cylinder side only when packed.)
BS	With 1 shock absorber (Set on the driving cylinder side when packed.)

Applicable Auto Switch/Refer to pages 1719 to 1827 for further information on auto switches.

Type	Special function	Electrical entry	Wiring (Output)	Load voltage		Auto switch part no.		Lead wire length (m)					Pre-wired connector	Applicable load			
				DC	AC	Perpendicular		In-line		0.5 (Nil)	1 (M)	3 (L)			5 (Z)	None (N)	
						ø12 to ø25	ø32, ø40	ø12 to ø25	ø32, ø40								
Solid state switch		Grommet	3-wire (NPN)	5V, 12V		M9NV	M9N	●	●	●	○	—	○	IC circuit	Relay, PLC		
			3-wire (PNP)			M9PV	M9P	●	●	●	○	—	○				
		Connector	2-wire	12V	M9BV	M9B	●	●	●	○	—	○					
			—		J79C	—	●	—	●	●	●	—	—				
	Diagnostic indication (2-color indication)	Grommet	3-wire (NPN)	5V, 12V	24V	—	M9NVV	M9NV	●	●	●	○	—	○		IC circuit	
			3-wire (PNP)				M9PVV	M9PV	●	●	●	○	—	○			
		Connector	2-wire	12V	M9BVV	M9BV	●	●	●	○	—	○	—				
			3-wire (NPN)		M9NAV	M9NA	○	○	●	○	—	○					
	Water resistant (2-color indication)	Grommet	3-wire (PNP)	5V, 12V	24V	—	M9PAV	M9PA	○	○	●	○	—	○		IC circuit	
			2-wire				M9BAV	M9BA	○	○	●	○	—	○			
With diagnostic output (2-color indication)	Connector	4-wire	5V, 12V	24V	—	—	F79F	●	—	●	○	—	○	IC circuit			
		—				—	—	—	—	—	—	—	—				
Reed switch		Grommet	3-wire (NPN equivalent)	24V	—	A96V	A96	●	—	●	—	—	—	IC circuit	Relay, PLC		
						—	A72	—	A72H	●	—	●	—			—	—
						12V	100V	A93V	A93	●	—	●	—			—	—
		Connector	2-wire	5V, 12V	100 V or less	A90V	A90	●	—	●	—	—	—	IC circuit			
				12V	—	A73C	—	●	—	●	●	●	—				
				5V, 12V	24 V or less	A80C	—	●	—	●	●	●	—				
Diagnostic indication (2-color indication)	Grommet	Yes	—	—	—	A79W	—	●	—	●	—	—	—	—			
		No	—	—	—	—	—	—	—	—	—	—					

* Lead wire length symbols: 0.5 m Nil (Example) M9NV
 1 m M (Example) M9NWM
 3 m L (Example) M9NWL
 5 m Z (Example) M9NWZ
 None N (Example) J79CN

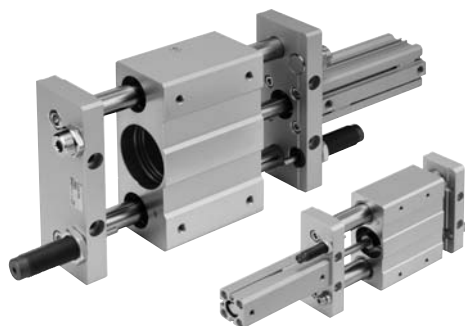
* Solid state auto switches marked with "○" are produced upon receipt of order.

* Since there are other applicable auto switches than listed, refer to page 532 for details.

* For details about auto switches with pre-wired connector, refer to pages 1784 and 1785.

* When D-A9□/M9□ types with ø32 to ø40 are mounted on a side other than the port side, order auto switch mounting brackets separately.

Refer to page 532 for details.



Specifications

Bore size (mm)	12	16	20	25	32	40
Fluid	Air					
Action	Double acting					
Proof pressure	1.5 MPa					
Maximum operating pressure	0.7 MPa ^{Note)}					
Minimum operating pressure	0.15 MPa					
Ambient and fluid temperature	-10 to 60°C (No freezing)					
Piston speed	50 to 500 mm/s					
Cushion	Bumper (Both ends/Standard), Shock absorber (Option)					
Lubrication	Not required (Non-lube)					
Stroke adjusting range	-10 mm (Extension end, Retraction end: -5 mm each)					



Note) Maximum operating pressure for this product with the bumper feature.
The maximum operating pressure for the cylinder alone is 1 MPa.

Shock Absorber Specifications

For detailed specifications about shock absorber, /refer to page 1673

Model	CXT□ ¹² ₁₆	CXT□20	CXT□25	CXT□ ³² ₄₀	
Shock absorber model	RB0806	RB1007	RB1411	RB2015	
Max. energy absorption (J)	2.94	5.88	14.7	58.8	
Stroke absorption (mm)	6	7	11	15	
Collision speed	0.05 to 5 m/s				
Max. operating frequency* (cycle/min)	80	70	45	25	
Ambient temperature	-10 to 80°C				
Spring force (N)	Extended	1.96	4.22	6.86	8.34
	Retracted	4.22	6.86	15.30	20.50
Mass (g)	15	25	65	150	



* It denotes the values at the maximum energy absorption per one cycle. Therefore, the operating frequency can be increased according to the energy absorption.

The shock absorber service life is different from that of the CXT cylinder depending on the operating conditions. Refer to the Specific Product Precautions for the replacement period.

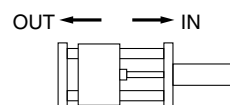


Made to Order Specifications
(For details, refer to pages 1865 and 1993.)

Symbol	Specifications
XB13	Low speed cylinder (5 to 50 mm/s)
X138	Adjustable stroke type
X777	Fluororubber seals (Actuating cylinder unit only)

Theoretical Output

Bore size (mm)	Operating direction	Piston area (mm ²)	Operating pressure (MPa)		
			0.3	0.5	0.7
12	IN	84.8	25	42	59
	OUT	113	34	57	79
16	IN	151	45	75	106
	OUT	201	60	101	141
20	IN	236	71	118	165
	OUT	314	94	157	220
25	IN	378	113	189	264
	OUT	491	147	245	344
32	IN	603	181	302	422
	OUT	804	241	402	563
40	IN	1056	317	528	739
	OUT	1257	377	628	880



CX2

CXW

CXT

CXSJ

CXS

D-□

-X□

Individual
-X□