



Datenblatt - Fiche technique - Data sheet

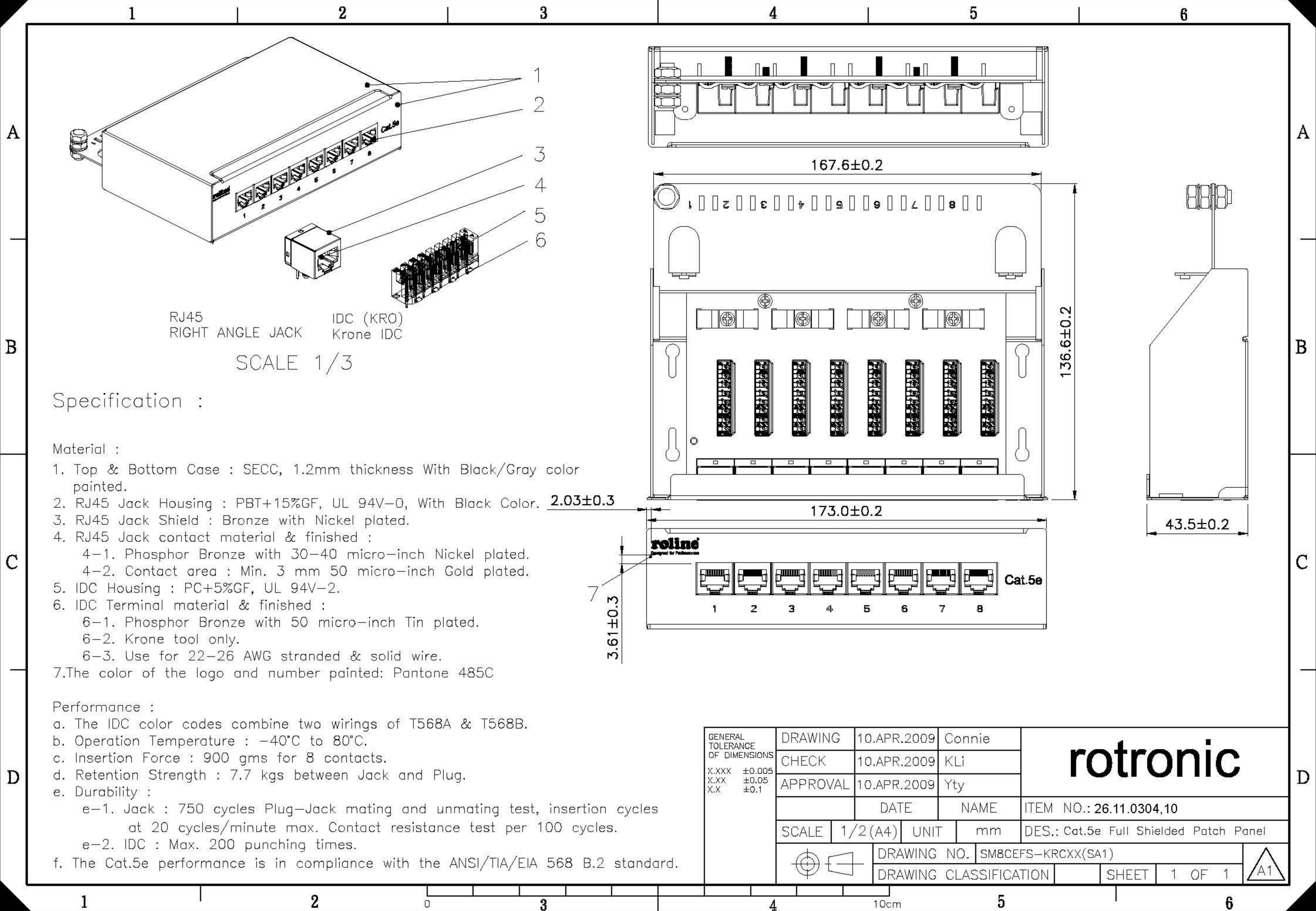
**26.11.0310**



ROLINE Patchpanel, 8 Ports, Kat.5e, geschirmt, schwarz

ROLINE Panneau de brassage cat. 5e, 8 ports, noir

ROLINE Cat.5e Wall Mount Patch Panel, 8 Ports, STP, black



RJ45 RIGHT ANGLE JACK      IDC (KRO) Krone IDC

SCALE 1/3

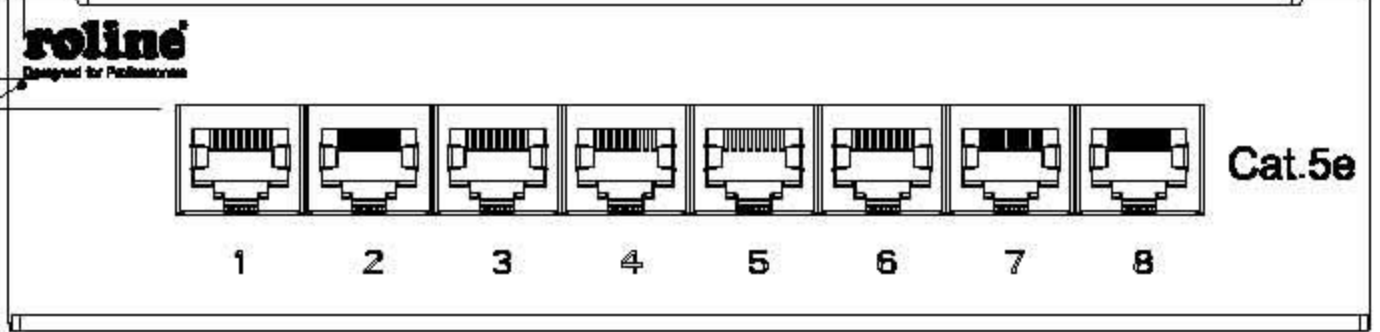
Specification :

Material :

- 1. Top & Bottom Case : SECC, 1.2mm thickness With Black/Gray color painted.
- 2. RJ45 Jack Housing : PBT+15%GF, UL 94V-0, With Black Color.  $2.03 \pm 0.3$
- 3. RJ45 Jack Shield : Bronze with Nickel plated.
- 4. RJ45 Jack contact material & finished :
  - 4-1. Phosphor Bronze with 30-40 micro-inch Nickel plated.
  - 4-2. Contact area : Min. 3 mm 50 micro-inch Gold plated.
- 5. IDC Housing : PC+5%GF, UL 94V-2.
- 6. IDC Terminal material & finished :
  - 6-1. Phosphor Bronze with 50 micro-inch Tin plated.
  - 6-2. Krone tool only.
  - 6-3. Use for 22-26 AWG stranded & solid wire.
- 7. The color of the logo and number painted: Pantone 485C

Performance :

- a. The IDC color codes combine two wirings of T568A & T568B.
- b. Operation Temperature :  $-40^{\circ}\text{C}$  to  $80^{\circ}\text{C}$ .
- c. Insertion Force : 900 gms for 8 contacts.
- d. Retention Strength : 7.7 kgs between Jack and Plug.
- e. Durability :
  - e-1. Jack : 750 cycles Plug-Jack mating and unmating test, insertion cycles at 20 cycles/minute max. Contact resistance test per 100 cycles.
  - e-2. IDC : Max. 200 punching times.
- f. The Cat.5e performance is in compliance with the ANSI/TIA/EIA 568 B.2 standard.



GENERAL TOLERANCE OF DIMENSIONS X.XXX ±0.005 X.XX ±0.05 X.X ±0.1	DRAWING	10.APR.2009	Connie	<h1>rotronic</h1>
	CHECK	10.APR.2009	KLi	
	APPROVAL	10.APR.2009	Yty	
		DATE	NAME	ITEM NO.: 26.11.0304,10
	SCALE	1/2(A4)	UNIT	mm
	DRAWING NO.	SM8CEFS-KRCXX(SA1)		
	DRAWING CLASSIFICATION	SHEET	1 OF 1	