

2358714-1 ✓ ACTIVE

ICCON

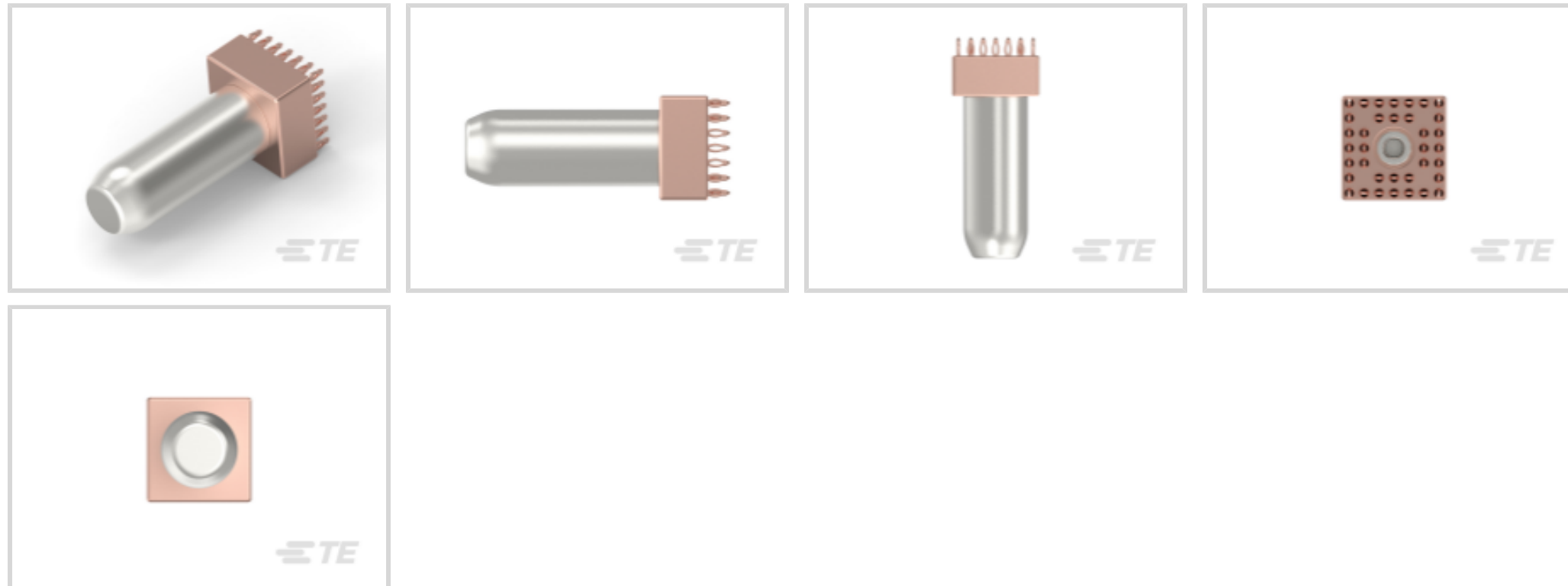
TE Internal #: 2358714-1

Power Terminals, Pin, Terminates To Printed Circuit Board, 1 Position, Board-to-Board, Power, Uninsulated, Vertical, Silver, Silver, ICCON

[View on TE.com >](#)



Terminals & Splices > Power Terminals



Power Terminal Type: **Pin**

Product Terminates To: **Printed Circuit Board**

Number of Positions: **1**

Contact Current Rating (Max): **350 A**

Connector System: **Board-to-Board**

Features

Product Type Features

Terminal Style	Pin
Power Terminal Type	Pin
Connector System	Board-to-Board
Sealable	No

Configuration Features

Number of Positions	1
PCB Mount Orientation	Vertical

Body Features

Plating Material Finish	Bright
-------------------------	--------

Contact Features

PCB Contact Termination Area Plating Material Finish	Matte
Contact Mating Area Plating Material Finish	Bright
Contact Underplating Material	Nickel
Contact Current Rating (Max)	350 A



Contact Mating Area Plating Material	Silver
Contact Mating Area Plating Material Thickness	3 µm[120 µin]
PCB Contact Termination Area Plating Material	Silver
PCB Contact Termination Area Plating Material Thickness	3 µm[120 µin]
Terminal Orientation	Straight
Contact Design	Contact Band

Termination Features

Termination Method to Printed Circuit Board	Through Hole - Press-Fit
Product Terminates To	Printed Circuit Board

Mechanical Attachment

Carrier Strip Mount Orientation	End Feed
Contact Mating Retention Type	Spring
Screw Size	M4

Housing Features

Housing Material	Thermoplastic
------------------	---------------

Dimensions

PCB Thickness (Recommended)	2 mm[.079 in]
Mating Pin Diameter	10.3 mm[.406 in]

Usage Conditions

Insulation Option	Uninsulated
Operating Temperature Range	-40 – 105 °C

Operation/Application

Circuit Application	Power
---------------------	-------

Packaging Features

Packaging Method	Bag & Box
Packaging Quantity	1000

Other

Insulation Material	Nylon
---------------------	-------

Product Compliance

[For compliance documentation, visit the product page on TE.com>](#)



EU RoHS Directive 2011/65/EU	Compliant
EU ELV Directive 2000/53/EC	Compliant
China RoHS 2 Directive MIIT Order No 32, 2016	No Restricted Materials Above Threshold
EU REACH Regulation (EC) No. 1907/2006	Current ECHA Candidate List: JAN 2023 (233) Candidate List Declared Against: JAN 2023 (233) Does not contain REACH SVHC
Halogen Content	Low Halogen - Br, Cl, F, I < 900 ppm per homogenous material. Also BFR/CFR/PVC Free
Solder Process Capability	Not applicable for solder process capability

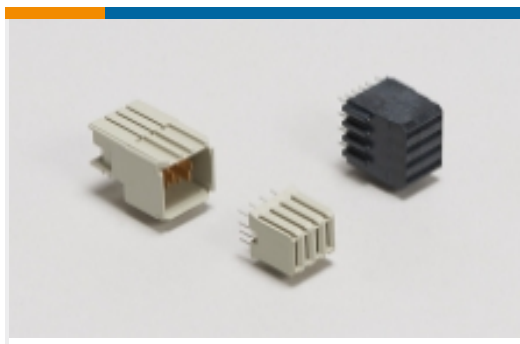
Product Compliance Disclaimer

This information is provided based on reasonable inquiry of our suppliers and represents our current actual knowledge based on the information they provided. This information is subject to change. The part numbers that TE has identified as EU RoHS compliant have a maximum concentration of 0.1% by weight in homogenous materials for lead, hexavalent chromium, mercury, PBB, PBDE, DBP, BBP, DEHP, DIBP, and 0.01% for cadmium, or qualify for an exemption to these limits as defined in the Annexes of Directive 2011/65/EU (RoHS2). Finished electrical and electronic equipment products will be CE marked as required by Directive 2011/65/EU. Components may not be CE marked. Additionally, the part numbers that TE has identified as EU ELV compliant have a maximum concentration of 0.1% by weight in homogenous materials for lead, hexavalent chromium, and mercury, and 0.01% for cadmium, or qualify for an exemption to these limits as defined in the Annexes of Directive 2000/53/EC (ELV). Regarding the REACH Regulation, the information TE provides on SVHC in articles for this part number is based on the latest European Chemicals Agency (ECHA) 'Guidance on requirements for substances in articles' posted at this URL: <https://echa.europa.eu/guidance-documents/guidance-on-reach>

Compatible Parts



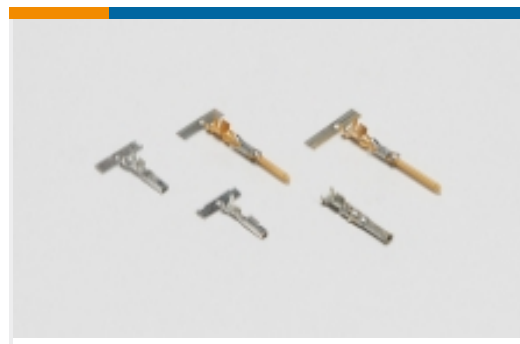
Also in the Series | ICCON



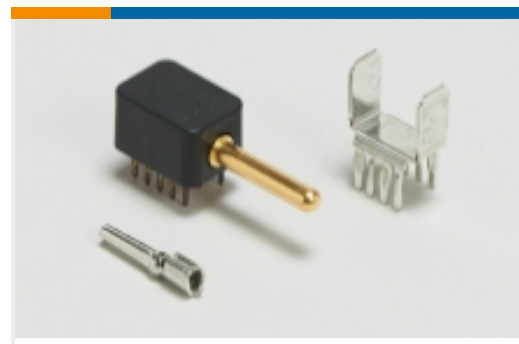
Backplane Power Connectors(2)



Busbar Connectors(7)



Power Contacts(4)

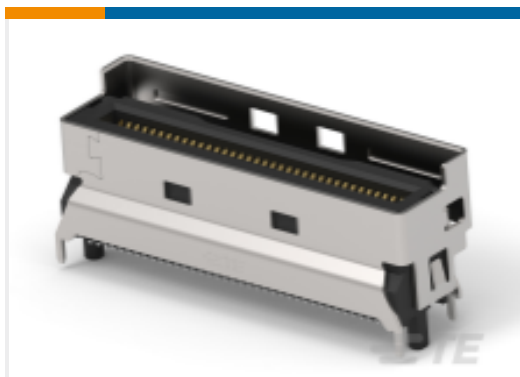


Power Terminals(3)

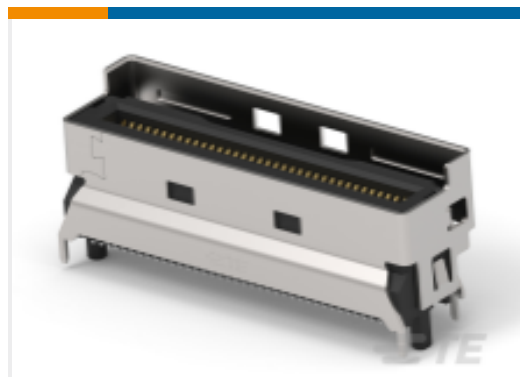


Rectangular Power Connectors(15)

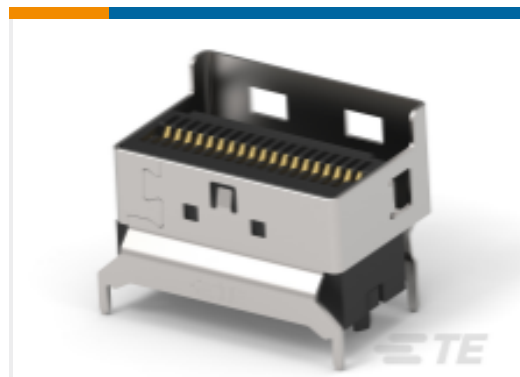
Customers Also Bought



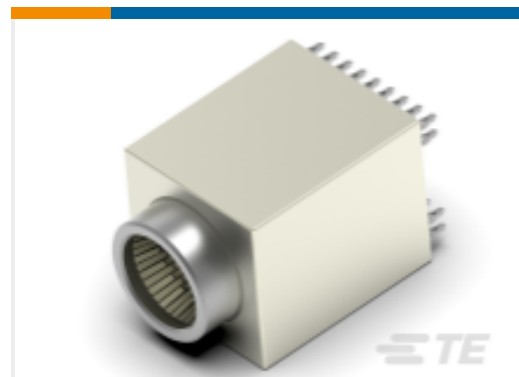
TE Part #1-2379397-7
MCIO INTERGRATED CONN, V/T,8X,
SMT TYPE



TE Part #2359366-5
MCIO INTERGRATED CONN, V/T,8X,
SMT TYPE



TE Part #2360221-5
Low Profile Slimline SAS 4X V/T REC



TE Part #2368390-1
ICCON Block Size 10.3mm Vertical
Socket



TE Part #2384218-3
SLIVER 2.0 4C+ vertical receptacle



TE Part #1-2327677-3
RECEPT ASSY, 140 POS, VERT, SLIVER
2.0



TE Part #1-6450843-6
MBXLE R/A HEADER 3ACP



TE Part #5-2354154-8
PCIEG4,SMT,V,164P,30u,ML,HT,TAB



TE Part #2333799-7
RCPT ASSY, VERT, 168 POS, SLIVER 2.0

Documents



Product Drawings

ICCON BLOCK SIZE 10.3mm PIN

English

CAD Files

3D PDF

3D

Customer View Model

[ENG_CVM_CVM_2358714-1_2.2d_dxf.zip](#)

English

Customer View Model

[ENG_CVM_CVM_2358714-1_2.3d_igs.zip](#)

English

Customer View Model

[ENG_CVM_CVM_2358714-1_2.3d_stp.zip](#)

English

By downloading the CAD file I accept and agree to the [Terms and Conditions](#) of use.

Product Specifications

Product Specification

English

Product Environmental Compliance

Product Compliance

English

Product Compliance

English