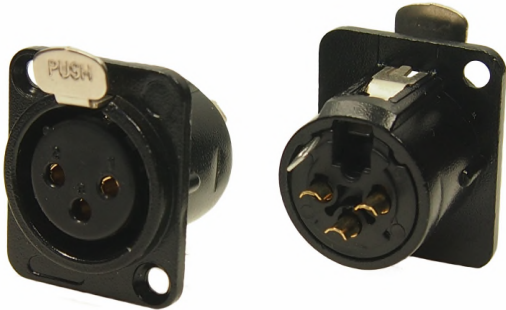
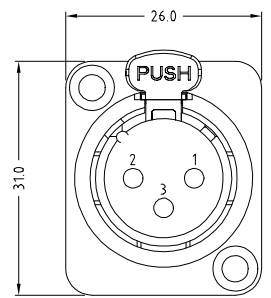
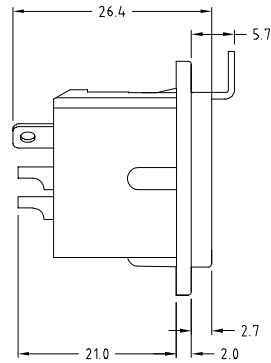
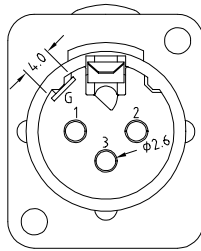


CLIFF

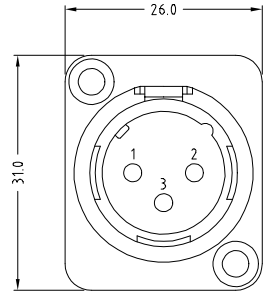
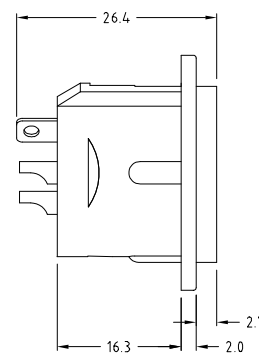
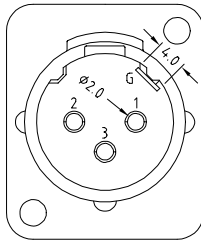
METAL 3 PIN XLR SOCKETS (FEEDTHROUGH STYLE)



FC61900 - FEMALE XLR 3DCF/BM
WITH LATCH

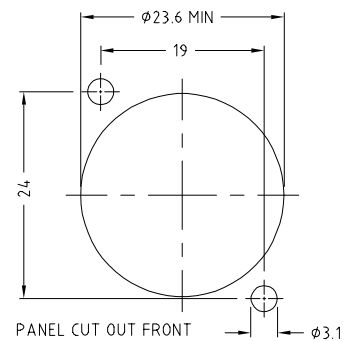


FC61905 - MALE XLR 3DCM/BM



SPECIFICATION

- Contact Resistance: $\leq 7m\Omega$
- Insulation Resistance: $\geq 5000M\Omega$
- Withstand Voltage: 1400V
- Durability (Mating / Unmating): ≥ 2000 insertions
- Insertion and Extraction force: 10-80N



These black metal 3 pin XLR's can be fitted into our 1U racks.

