
HMI 4000 W/DXS SOLAR

HMI | Metal halide lamps, double-ended



Product datasheet

Technical data

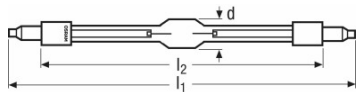
Electrical data

Nominal wattage	4000 W
Lamp wattage	4000 W
Nominal voltage	204 V
Lamp voltage	200 V
Nominal current	23.5 A
Lamp current	24.0 A

Photometrical data

Luminous flux	380000 lm
Color temperature	6000 K
Color rendering index Ra	> 90

Dimensions & weight



Diameter	36.0 mm
Length	405.0 mm
Length with base excl. base pins/connection	340.00 mm

Lifespan

Lifespan	500 h
----------	-------

Additional product data

Base (standard designation)	SFa21-12
-----------------------------	----------

Capabilities

Burning position	p15
------------------	-----

Product datasheet

Safety advice

Because of their high luminance, UV radiation and high internal pressure during operation, HMI lamps may only be operated in enclosed lamp casings specially constructed for the purpose. Appropriate filters must ensure that UV radiation is reduced to an acceptable level. Mercury is released if the lamp breaks. Special safety precautions must be taken. Information on safety and handling is available on request or can be found in the leaflet included with the lamp or in the operating instructions.

Logistical Data

Product code	Product description	Packaging unit (Pieces/Unit)	Dimensions (length x width x height)	Volume	Gross weight
4052899152601	HMI 4000 W/DXS SOLAR	Shipping carton box 1	561 mm x 136 mm x 119 mm	9.08 dm ³	1034.00 g

The mentioned product code describes the smallest quantity unit which can be ordered. One shipping unit can contain one or more single products. When placing an order, for the quantity please enter single or multiples of a shipping unit.

Disclaimer

Subject to change without notice. Errors and omission excepted. Always make sure to use the most recent release.
