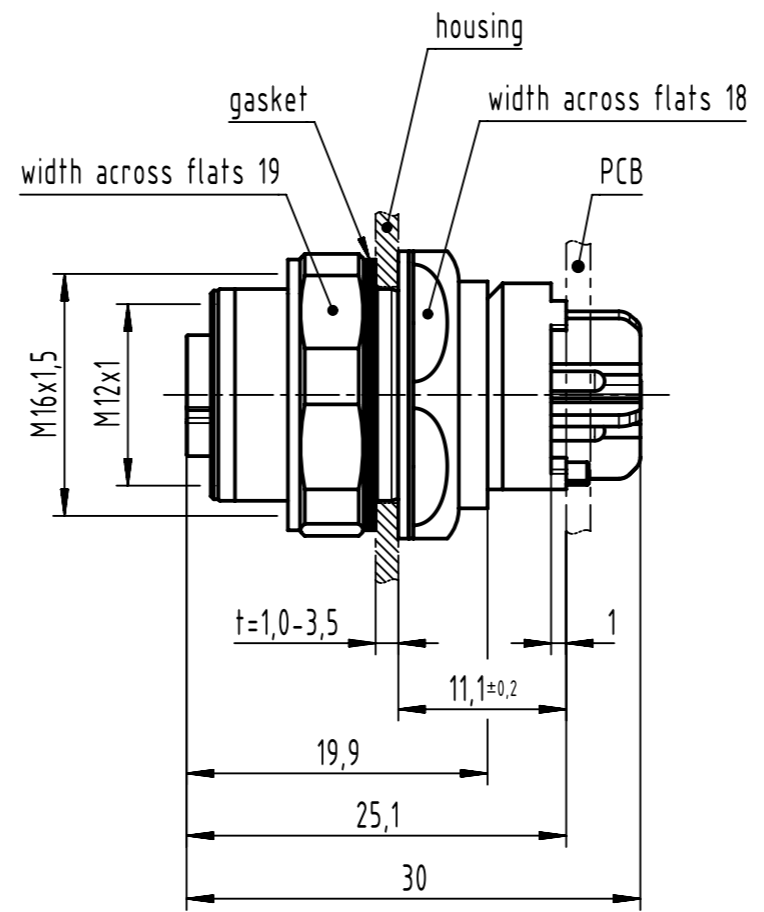
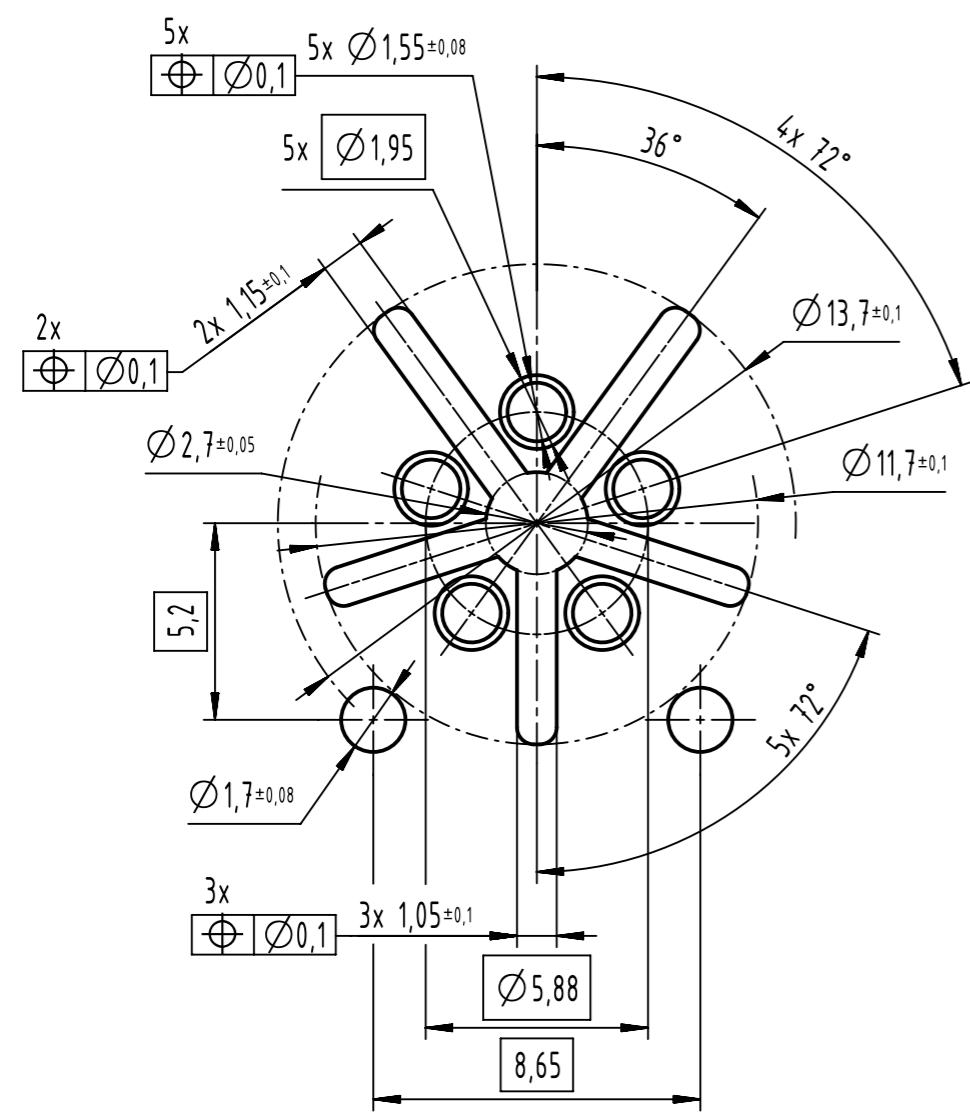
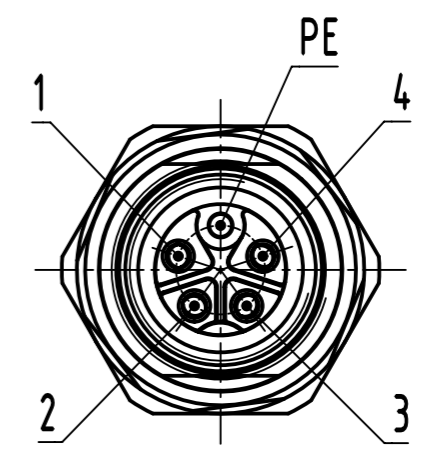


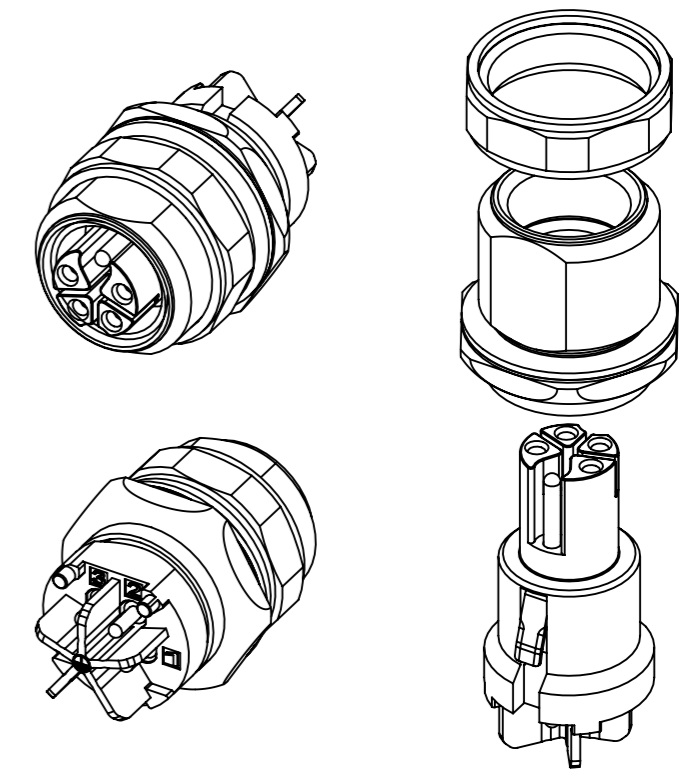
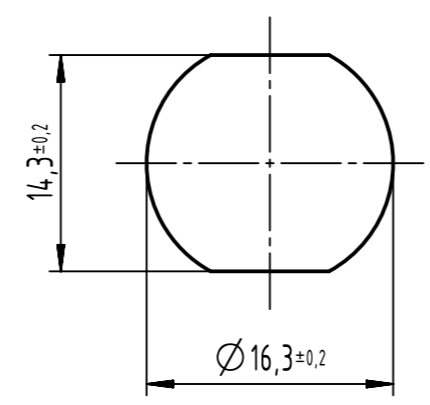
recommended PCB-layout  
A (5:1)



contact face based on  
IEC 61076-2-111

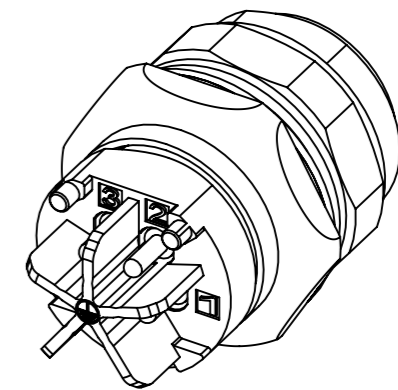
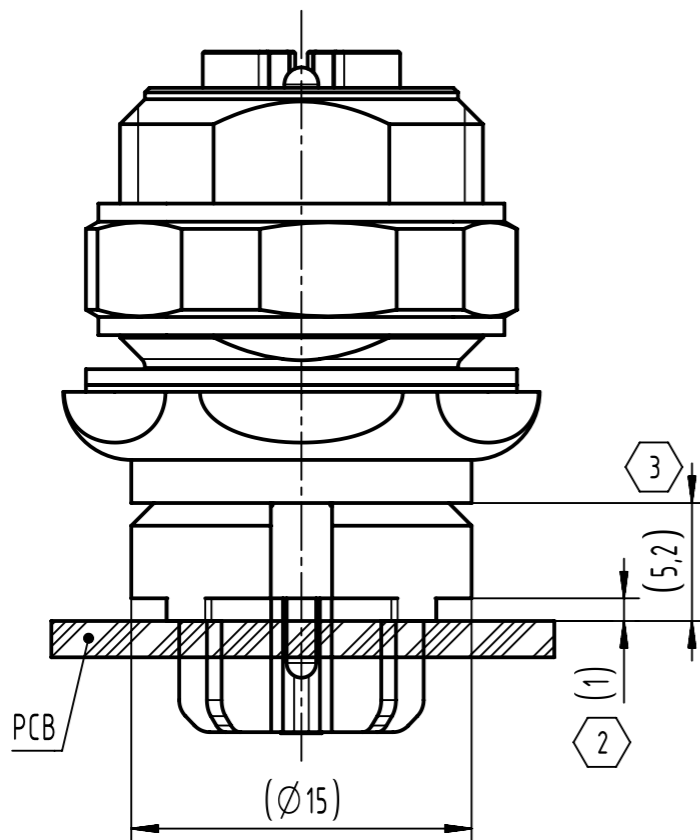
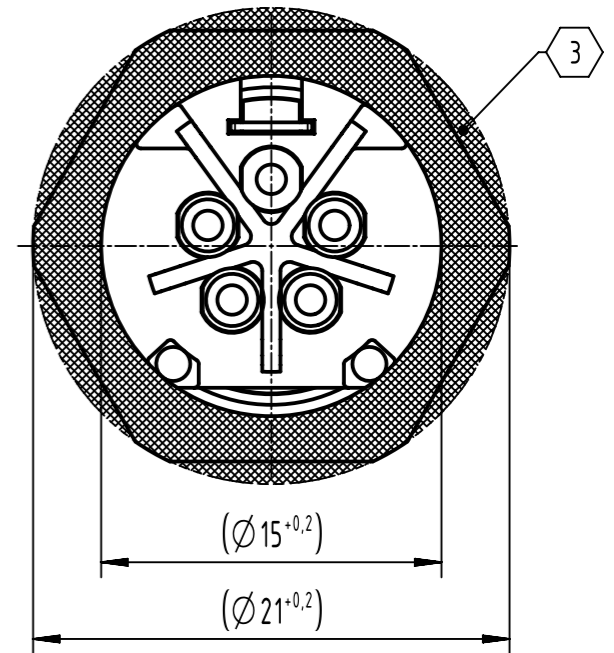
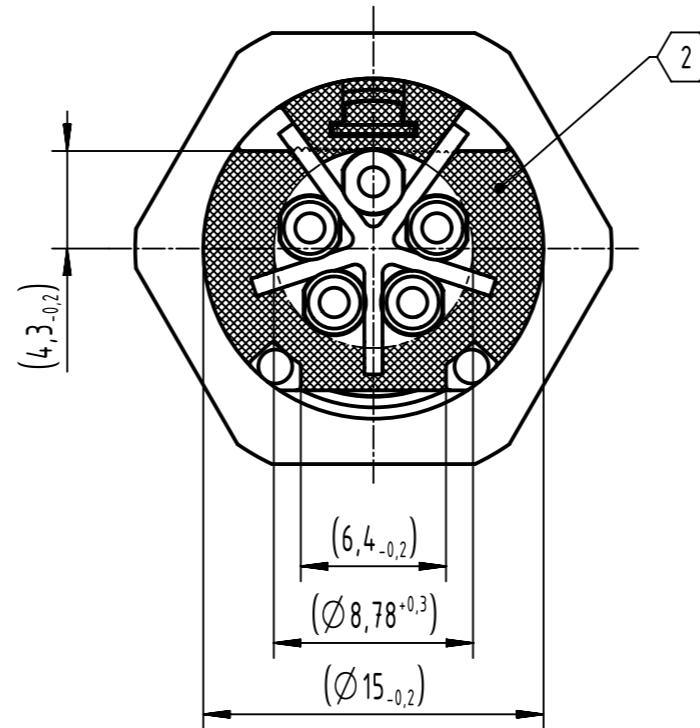
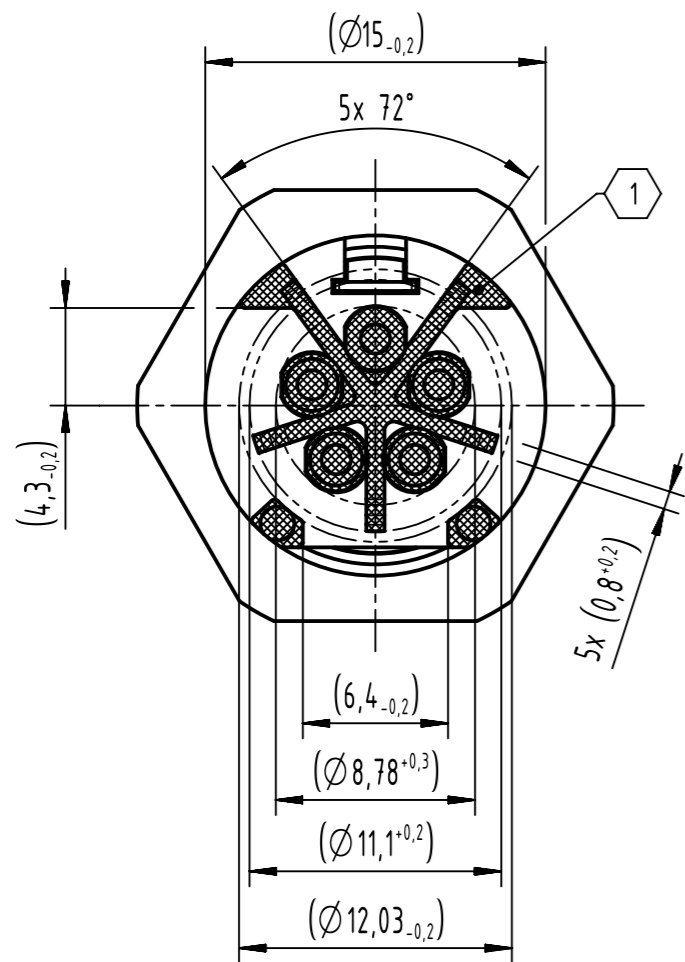


panel cut out



- recommended PCB: 1.6mm
- recommended torque for the lock nut: 2.0Nm
- 1 pcs. single package

	All Dimensions in mm Original Size DIN A3		Scale 2:1	Free size tol.		Ref.
	All rights reserved		Created by HASSE	Inspected by FRIESENH	Standardisation	Date 2021-11-05
Department EL PD		Title M12-PCB-THR-2PC-5P-KCOD-F-STR-SHLD			State Final Release	
HARTING D-32339 Espelkamp		Type TB	Number 21033092530		Doc-Key / ECM-Nr. 100725636/UGD/000/D 500000205391	Rev. D
						Page 1/2



- ① the area where no component on the PCB is allowed
- ② the area where components of max. 0.9mm height are allowed on the PCB
- ③ starting from  $\text{Ø}15^{+0,2}$ , the maximum height of the components on the PCB is 6,7mm

	All rights reserved Department EL PD	All Dimensions in mm Original Size DIN A3		Scale 3:1	Free size tol.	Ref. Sub.
		Created by HASSE	Inspected by FRIESENH	Standardisation	Date 2021-11-05	State Final Release
HARTING D-32339 Espelkamp		Title M12-PCB-THR-2PC-5P-KCOD-F-STR-SHLD			Doc-Key / ECM-Nr. 100725636/UGD/000/D 500000205391	
		Type TB	Number 21033092530		Rev. D	Page 2/2