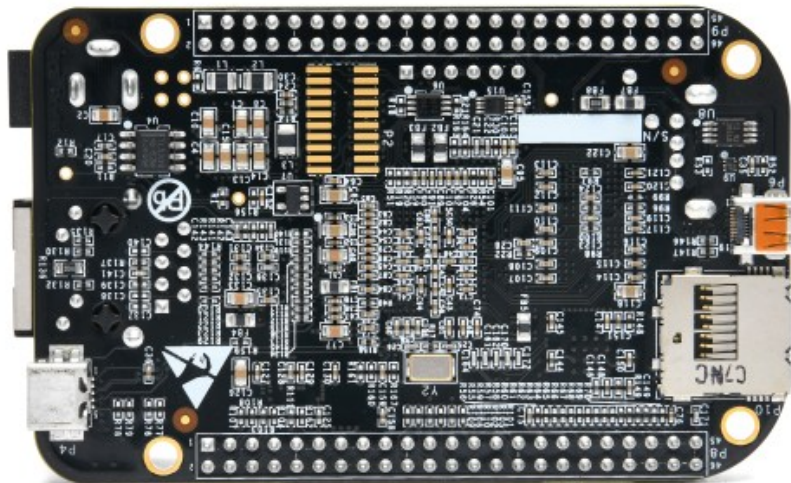


BeagleBone Black Rev C



Description

BeagleBone® Black is an affordable, community-supported, open source development platform for developers and hobbyists of all levels. Boot Linux in seconds and get started on development in less than 5 minutes with just a single USB cable. BeagleBone® Black can be used as a standalone computer or an embedded system.

Technical Specifications

Processor	AM3358BZCZ100 1GHz ARM Cortex-A8
Memory	4GB eMMC flash, 512MB DDR3, 4KB EEPROM
Graphics	SGX530 3D, 20M Polygons/S
Storage	microSD card, 3.3V MMC
PMIC	TPS65217C
USB	1 x USB A 2.0 Host, 1 x miniUSB 2.0 Client
Ethernet	RJ45 Connector 10/100
Audio	HDMI

GPIO	2 x 46-pin Headers
Debug	20-pin CTI JTAG Serial debug port
LED Indicators	1 x power, 2 x Ethernet, 4 x User Controllable
Buttons	reset, boot, power
Power	miniUSB or 5V DC Jack
Supported OS	Linux Android Windows Embedded CE QNX ThreadX
Software Compatibility	Debian Android Ubuntu Cloud9 UDE
