

**Insulated Wirewound Resistors, moulded
flame retardant, failsafe**

Specification

Type		237	236
Style		0411	0614
Power rating P_{70}	W	0,75 ($P_{50} = 1,0$)	1,5 ($P_{25} = 2,0$)
Resistance range	Ω	R10 ... 1K0	R10 ... 1K0
E-series		E 24, E 12	
Tolerance	%	$\pm 5, \pm 10$	
Temperature coefficient	$10^{-6} * K^{-1}$	-400 ... +1000 see also page 2	
max. cont. working voltage	V_{RMS}	$\sqrt{P_{70} \cdot R}$	
Insulation voltage (1min.)	V_{RMS}	700	1000
Insulation resistance	Ω	$> 10^4 M$	
Derating linear	$^{\circ}C$	70 ... 175 (0W)	
Climatic category		55/175/56	
Temperature range	$^{\circ}C$	- 55 ... 175	
Thermal resistance	KW^{-1}	140	80
Failure rate (Total, ϑ_0 max., 60% conf. lev.)	$10^{-9} * h^{-1}$	appr. 100, depends on value	
Endurance (P_{70} , $70^{\circ}C$, 1000h)	$\left[\frac{\Delta R}{R} \right] \%$	$\pm 5,0$ average	$\pm 10,0$ average
Damp heat, steady state ($40^{\circ}C$, 93% r. h., 56d)	$\left[\frac{\Delta R}{R} \right] \%$	$\pm 2,0$	
Climatic sequence	$\left[\frac{\Delta R}{R} \right] \%$	$\pm 2,0$	

Series BWF

Insulated Wirewound Resistors, moulded flame retardant, failsafe

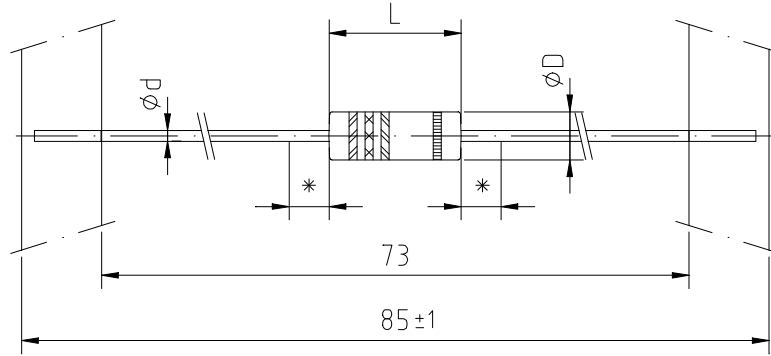
Type		237	236
Resistance to soldering heat (260°C, 10s)	$\left[\frac{\Delta R}{R} \right]$ %	± 0,2 typ.	
Solderability	s	2,5 Flowtime, solderglobule test IEC 60068-2-20-T	
Terminal strength	$\left[\frac{\Delta R}{R} \right]$ %	± 1	
Terminal tensile strength	N	40	
Marking		DIN-IEC-colourcode, 5 bands (5th band (blue) for failsafe version)	

Temperature coefficient

Type	Value	TC
237-0	R10	± 1000
	R11 ... R18	± 600
	R30 ... R68	± 300
	R75 ... 1K0	± 150
236-0	R10	± 1800
	R11 ... R16	± 1000
	R18 ... R68	± 800
	R75 ... 1K0	± 400

**Insulated Wirewound Resistors, moulded
 flame retardant, failsafe**

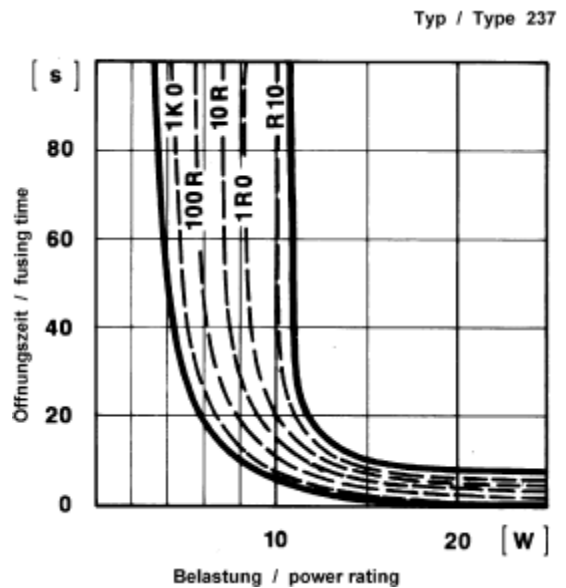
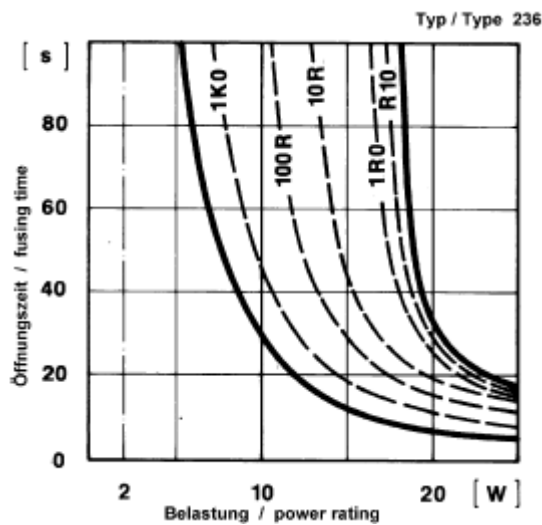
Dimensions in mm:



* 3mm, in diesem Bereich eingeschränkte Lötbarkeit
 3mm, reduced solderability in this area

Type	L ±0,2	øD ±0,2	ød ±0,02	Tape step
237	9,9	3,6	0,8	5
236	14,3	5,7	1,0	10

Fusing characteristic:



Series BWF

**Insulated Wirewound Resistors, moulded
flame retardant, failsafe**



Packaging:

Type	Packaging	Pieces	Pack.-Code
236	taped/Ammopack	1000	T
237	taped/Ammopack	1000	T

Ordering example:

BWF 237-0 5 T 1K0
Type Tolerance Pack.-Code R-Value