

cell type: NiMH
cell size: C

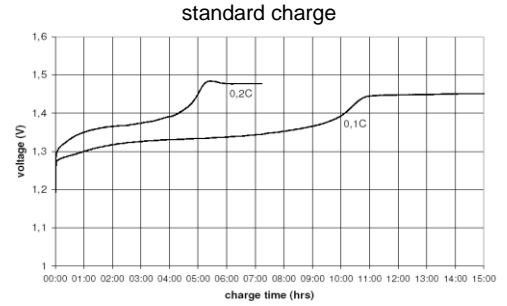
Conditions
 at standard charge
 (0.1C / 20°C)

Diagrams

nominal voltage: 1.2 V
max. charge voltage: 1.5 V

capacity
 nominal: 2500 mAh
 minimum: 2500 mAh
 2250 mAh

discharge at 0.2C
 discharge at 0.2C
 discharge at 1C
 1.0V end discharge voltage
 ta: 20°C

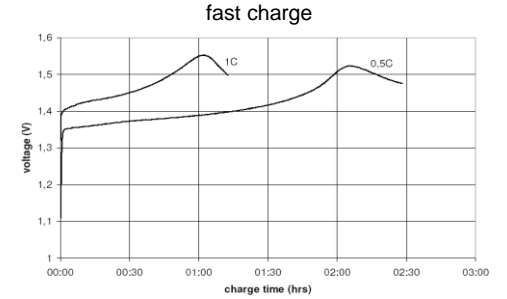


max. continuous discharge current: 5000 mA

ta: 0...45°C

charge
 standard charge: 250 mA
 quick charge: 750 mA
 fast charge: 2500 mA

time
 14...16hrs
 4hrs
 1.1hrs



recommended charge termination control parameters: 0...5 mV, 0.8...1 °C, 45...50 °C

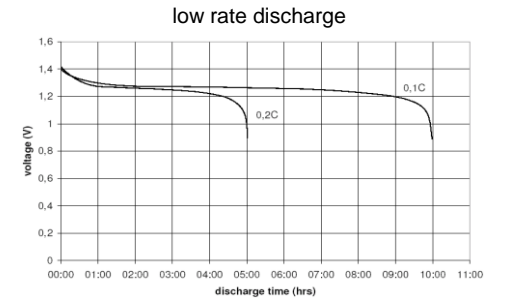
- ΔV (-deltaV)
 temperature rise per minute
 TCO (temperature cut off)

trickle charge current: 25...75 mA

(recommended)

continuous overcharge: ≤ 250 mA

no conspicuous deformation
 no leakage



internal resistance: ≤ 30 mΩ

at 1KHz
 battery fully charged

life expectancy: ≥ 500 cycles

acc. IEC standard

self discharge
 charge retention: ≥ 80 %

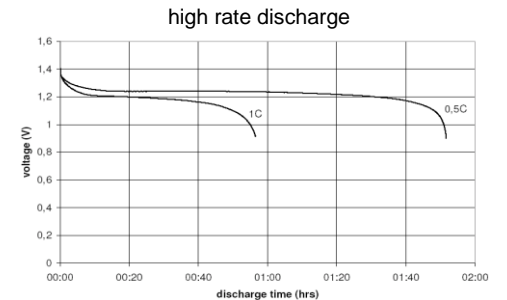
after 12 months
 storage at 20°C

initial capacity: ≥ 1700 mAh

within 30 days after delivery
 discharge at 0.2C

ambient temperature range:
 0...45 °C
 10...40 °C
 0...45 °C
 - 20...65 °C
 - 20...50 °C
 - 20...40 °C
 - 20...30 °C

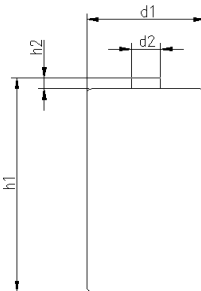
standard charge
 fast charge
 discharge (≥1C)
 discharge (<1C)
 storage (≤3months)
 storage (≤6months)
 storage (≤24months)



QCT1: 20/2350/30
 QCT2: 30/2200/35

mechanical specifications

cell dimensions
 diameter d1: 25.6 - 1.0 mm
 diameter d2: max. 7.5 mm
 height h1: 50.0 - 2.0 mm
 height h2: min. 1.5 mm
 weight: 60 ± 4 g
 blister card dimensions: 123 x 85 mm
 blister card weight (incl. batteries): 128 g



ANSMANN Specifications for model:	C - 2500mAh low self discharge 2pcs blister package
data sheet no. / part no.	5030912
supplier no.	702069
author / date	Gramlich / 28.02.2012