

P.390 | Tapered handles

Duroplast



MATERIAL

Phenolic based (PF) Duroplast, black colour, glossy finish.

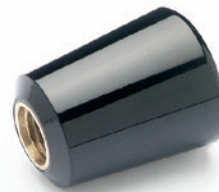
STANDARD EXECUTION

Plain blind hole.

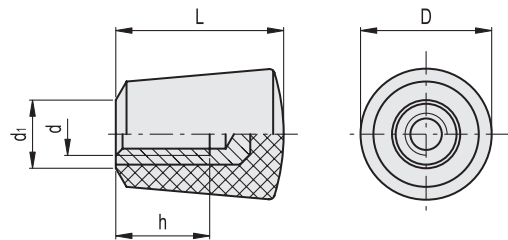
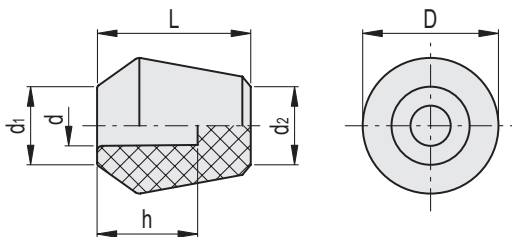
The elastic coupling, by press-fit assembly on h9 tolerance drawn stock bars, is not affected by vibrations and prevents the handle from slipping off (see Technical data on page A-12).

ASSEMBLY INSTRUCTIONS

Fit the handle onto slight chamfered shaft end and push as far as possible by hand or by means of a small press. Alternatively it is possible to tap the handle with a plastic or wooden mallet until firmly in place. In this case we strongly recommend to use a cloth or other suitable soft material over the product to avoid any surface damage.



ELESA Original design



Code	Description	D	L	d	d1	d2	h	⚖
47011	P.390/25-8	25	28	8	15	16	13	12
47111	P.390/30-10	30	34	10	18	19	18	20
47211	P.390/35-12	35	39	12	20	22	20	32
47311	P.390/40-14	40	45	14	23	25	24	47

I.307 | Tapered handles

Duroplast

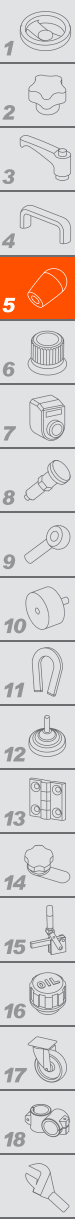


MATERIAL

Phenolic based (PF) Duroplast, black colour, glossy finish.

STANDARD EXECUTION

Brass boss, threaded blind hole.



Code	Description	D	L	d6H	d1	h	⚖
23801	I.307/20 B-M5	15	20	M5	7	12	6
23901	I.307/25 B-M6	20	26	M6	10	16	12
23902	I.307/25 B-M8	20	26	M8	10	15	14
24001	I.307/30 B-M10	25	32	M10	13	17	25