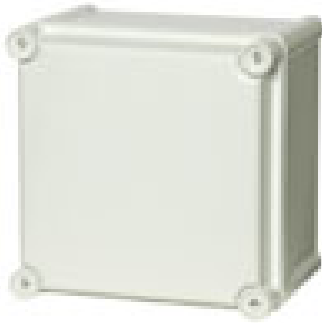


**SOLID ABS 1919 13 G**



Sample photo

**Order symbol:** ABS 1919 13 G  
**Product nbr:** 5880359  
**Description:** Enclosure, ABS  
**Remarks:** Grey cover

**EAN:** 6418074039002  
**EI. number:**  
 Finland: 3423751  
 Electric No. Italy: 7410110  
 Electric No. Sweden: 2539705

Including: Base with screws for mounting plate, cover with PUR gasket and polyamide cover screws.

Dimensions:	Length	Width	Height	Accessories:	
mm:	188	188	130	EKHXT	Mounting plate isolated
inch:	7.4	7.4	5.1	EKV 12	DIN-35 Mounting rail

Materials:		Rating:
<b>Material:</b>	ABS	Ingress Protection (EN 60529): IP66/IP67
<b>Base colour:</b>	RAL 7035 -light grey	Impact Resistance (EN 62262): IK08
<b>Cover screws material:</b>	Polyamide	Electrical insulation: Totally insulated
<b>Cover colour:</b>	RAL 7035 -light grey	Halogen free (DIN/VDE 0472, Part 815): 1
<b>Cover screws colour:</b>	Grey	Flammability Rating: UL 94 HB
<b>Gasket material:</b>	Polyurethane	Glow Wire Test (IEC 695-2-1) °C: 650
		NEMA Class: NEMA 1, 4, 4X, 6, 12, 13

Temperatures:		Certificates:
<b>Temperature °C (short term):</b>	-40 ... 80 °C	SGS Fimko
<b>Temperature °C (continuous):</b>	-40 ... 60 °C	
<b>Temperature °F (short term):</b>	-40 ... 175 °F	
<b>Temperature °F (continuous):</b>	-40 ... 140 °F	

Accessories:	
EKHVT	Mounting plate

